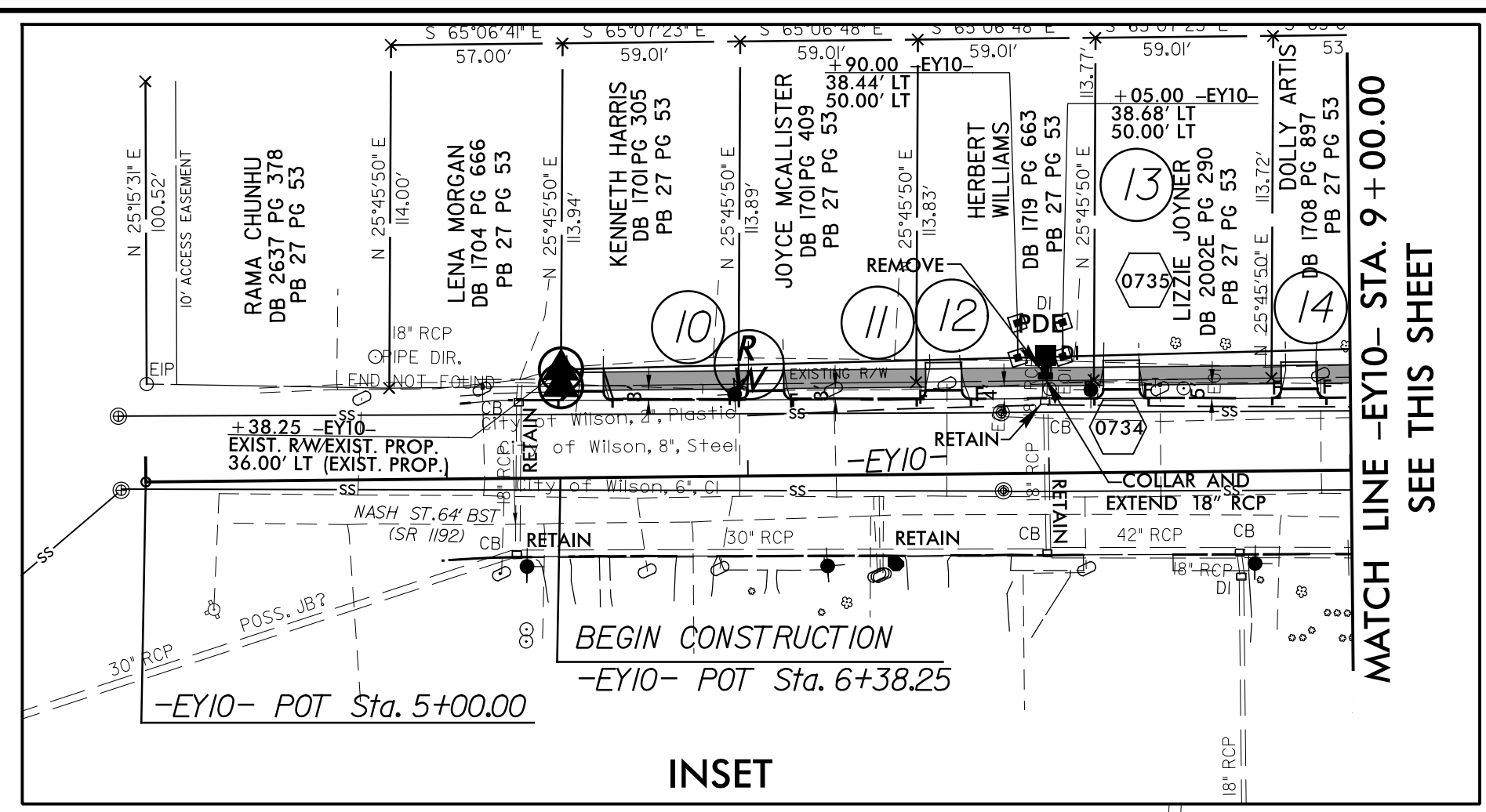
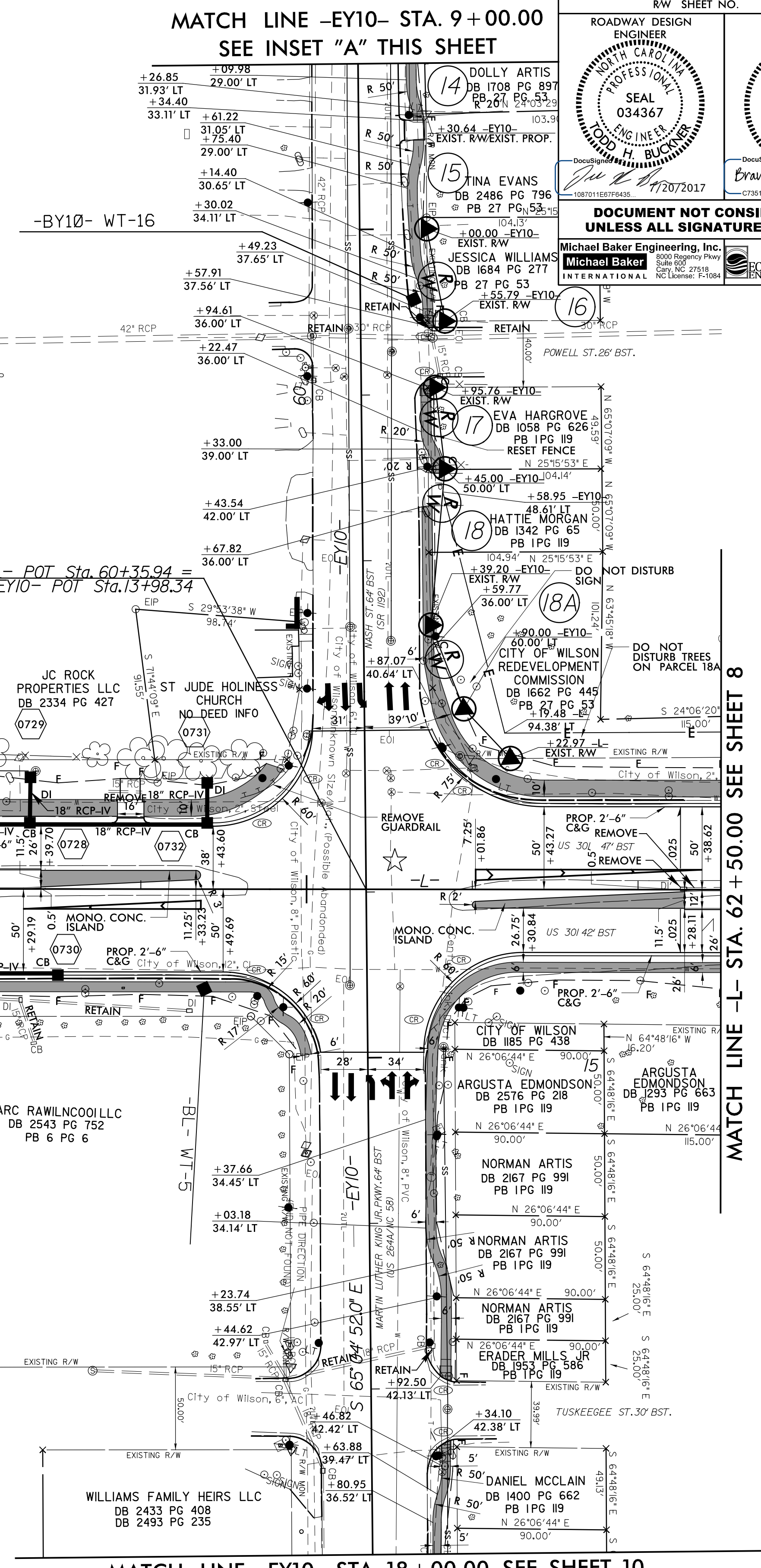


PROJECT REFERENCE NO. U-5935	SHEET NO. 7
RW SHEET NO.	
ROADWAY DESIGN ENGINEER MICHAEL BAKER ENGINEERING, INC. SEAL 034367 7/20/2017	HYDRAULICS ENGINEER MICHAEL BAKER ENGINEERING, INC. SEAL 039102 7/20/2017
DOCUMENT NOT CONSIDERED FINAL UNLESS ALL SIGNATURES COMPLETED	
Michael Baker Engineering, Inc. 6000 Research Parkway Suite 601 Cary, NC 27518 NC License: F-10684	



MATCH LINE -EY10- STA. 9 + 00.00
SEE THIS SHEET

INSET



MATCH LINE -EY10- STA. 9 + 00.00
SEE INSET "A" THIS SHEET

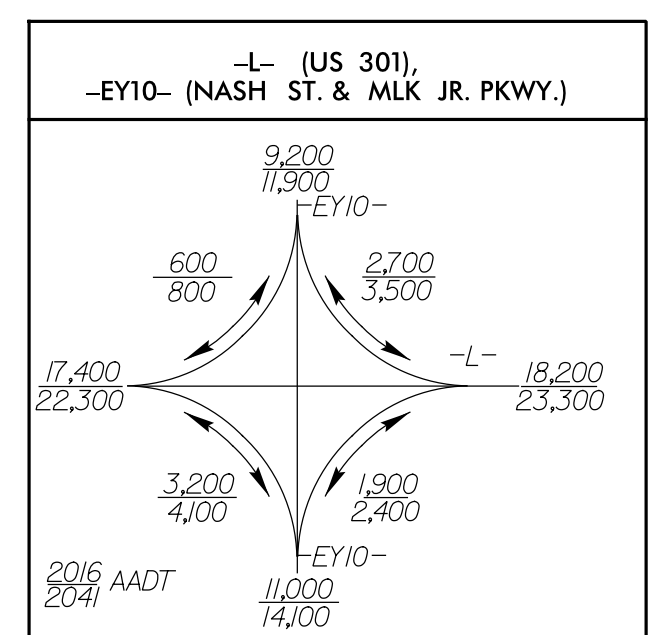
-BY10- WT-16

MATCH LINE -EY10- STA. 18 + 00.00 SEE SHEET 10

MATCH LINE -L- STA. 50 + 00.00 SEE SHEET 6

MATCH LINE -L- STA. 62 + 50.00 SEE SHEET 8

-L-		
Pls Sta 35+66.66	Pl Sta 44+91.24	Pls Sta 53+43.81
Os = 1° 45' 16.9"	Δ = 40° 05' 11.7" (LT)	Os = 1° 45' 16.9"
Ls = 147.00'	D = 2° 23' 14.4"	Ls = 147.00'
LT = 98.00'	L = 1,679.14'	LT = 98.00'
ST = 49.00'	T = 875.58'	ST = 49.00'
	R = 2,400.00'	
	Ds = 50 MPH	
	SE = 0.04	
	RUNOFF = 147.00'	



★ = REVISED SIGNAL

FOR -L- PROFILE SEE SHEET 18

8/11/2017 15:30
 5935-RD-SHT-07.dgn
 11:53 AM
 11/11/2017