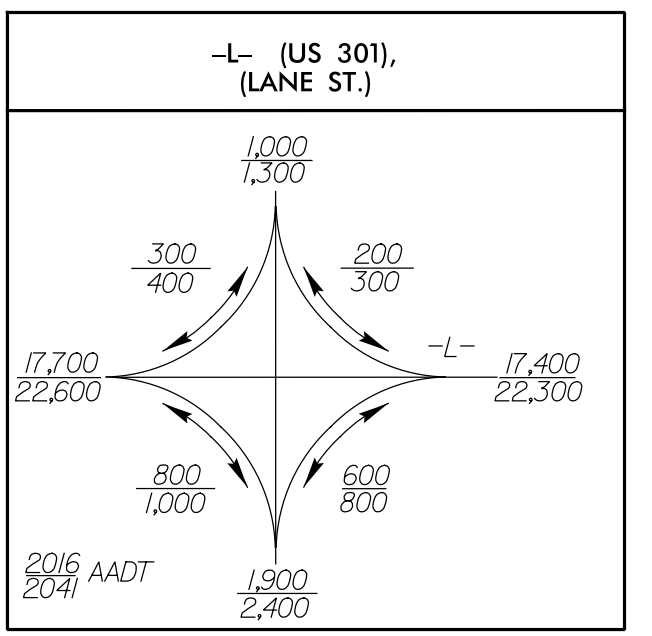
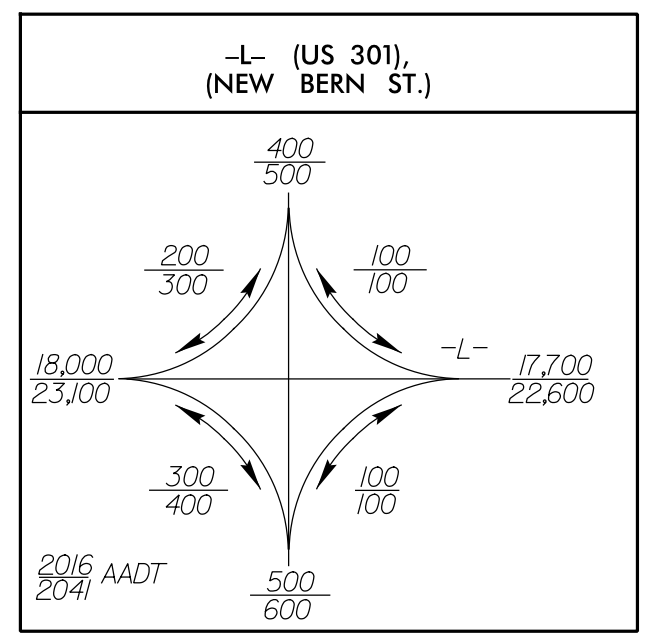
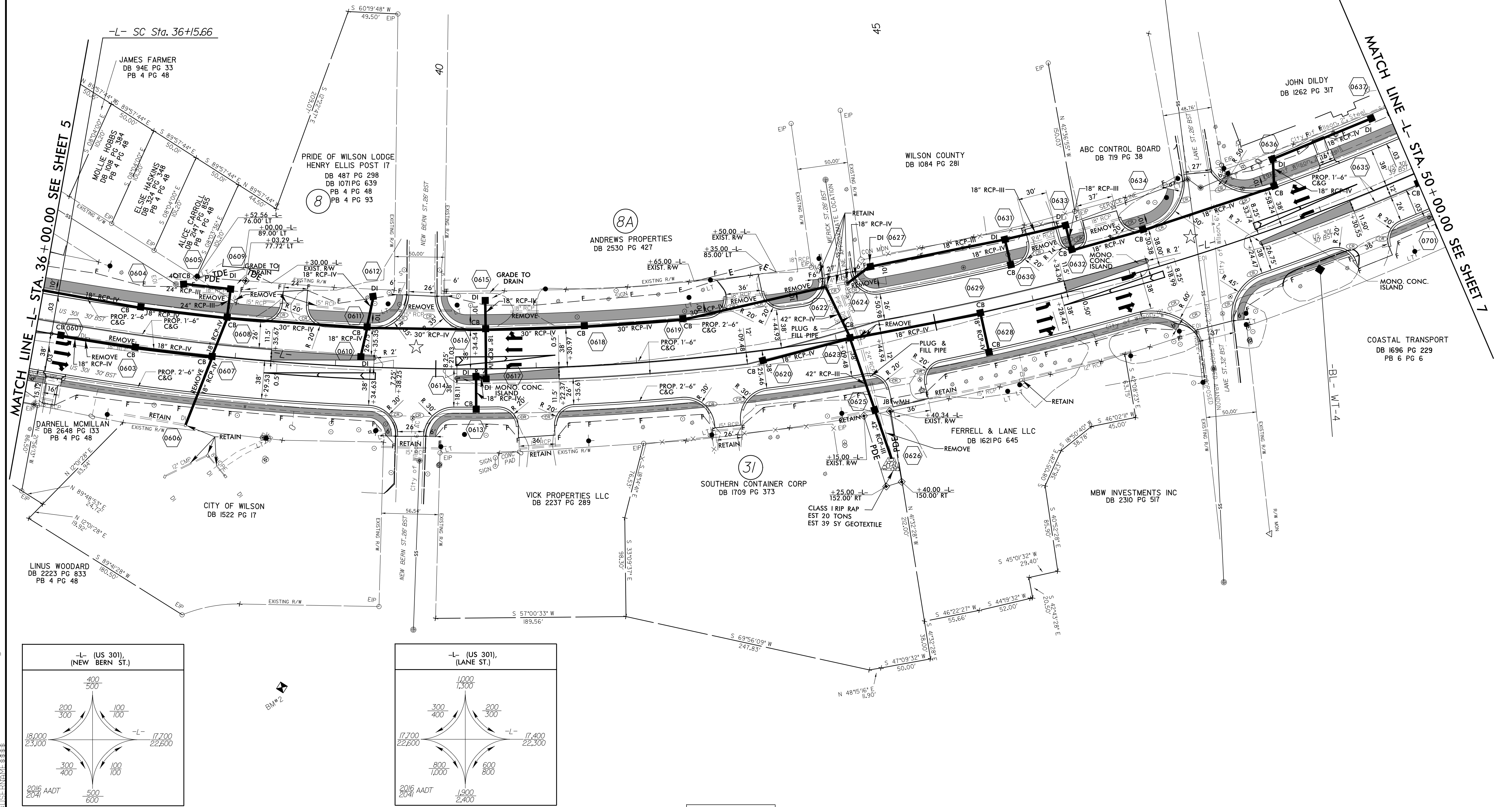
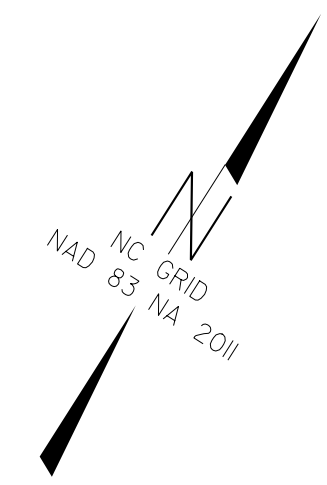


PROJECT REFERENCE NO. U-5935	SHEET NO. 6
RW SHEET NO.	
ROADWAY DESIGN ENGINEER SEAL 034367 MICHAEL BAKER INTERNATIONAL	HYDRAULICS ENGINEER SEAL 039102 BRANDON T. BARRAN
1087011E07F8433 7/11/2017	C7361A5E0F0409 7/11/2017
DOCUMENT NOT CONSIDERED FINAL UNLESS ALL SIGNATURES COMPLETED	
Michael Baker Engineering, Inc. 6000 Highway 100 Suite 600 Cary, NC 27518 NC License: F-10684	ECOLOGICAL ENGINEERING 1100 SE Cary Parkway Suite 101 Cary, NC 27518 (919) 557-0929

-L-		
Pls Sta 35+66.66	Pl Sta 44+91.24	Pls Sta 53+43.81
$\Theta_s = 1' 45'' 16.9''$	$\Delta = 40' 05'' 11.7'' (LT)$	$\Theta_s = 1' 45'' 16.9''$
$L_s = 147.00'$	$D = 2' 23'' 14.4''$	$L_s = 147.00'$
$LT = 98.00'$	$L = 1,679.14'$	$LT = 98.00'$
$ST = 49.00'$	$T = 875.58'$	$ST = 49.00'$
	$R = 2,400.00'$	
	$D_s = 50 \text{ MPH}$	
	$SE = 0.04$	
	$RUNOFF = 147.00'$	



☆ = REVISED SIGNAL

FOR -L- PROFILE SEE SHEETS 16 & 17

R:\15\2016\1424\U-5935-RDY-SHT\_06.dgn  
 2016 AADT  
 204