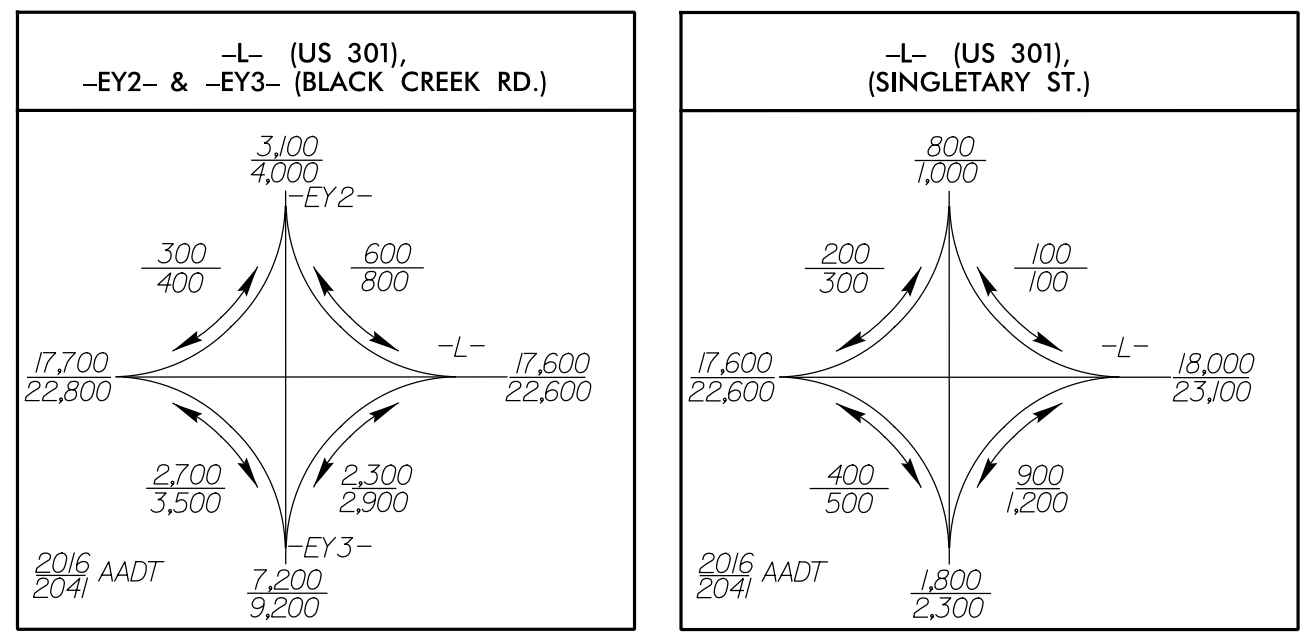


5/14/19

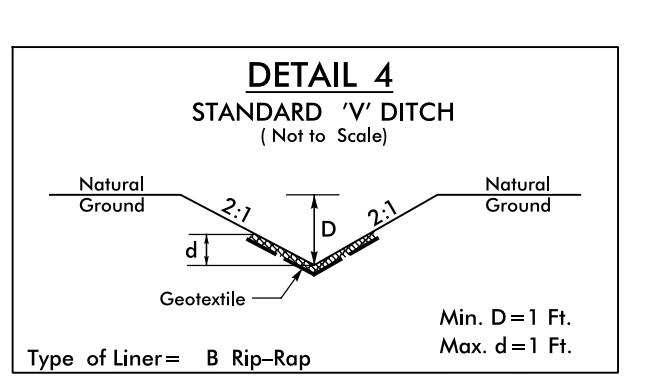
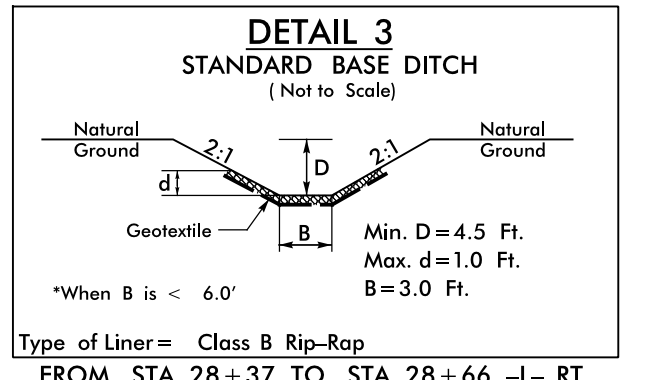
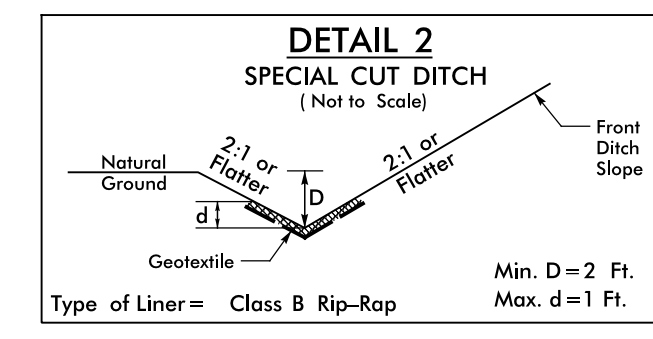
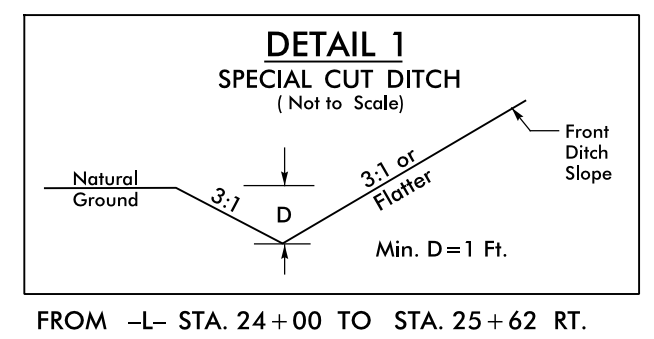
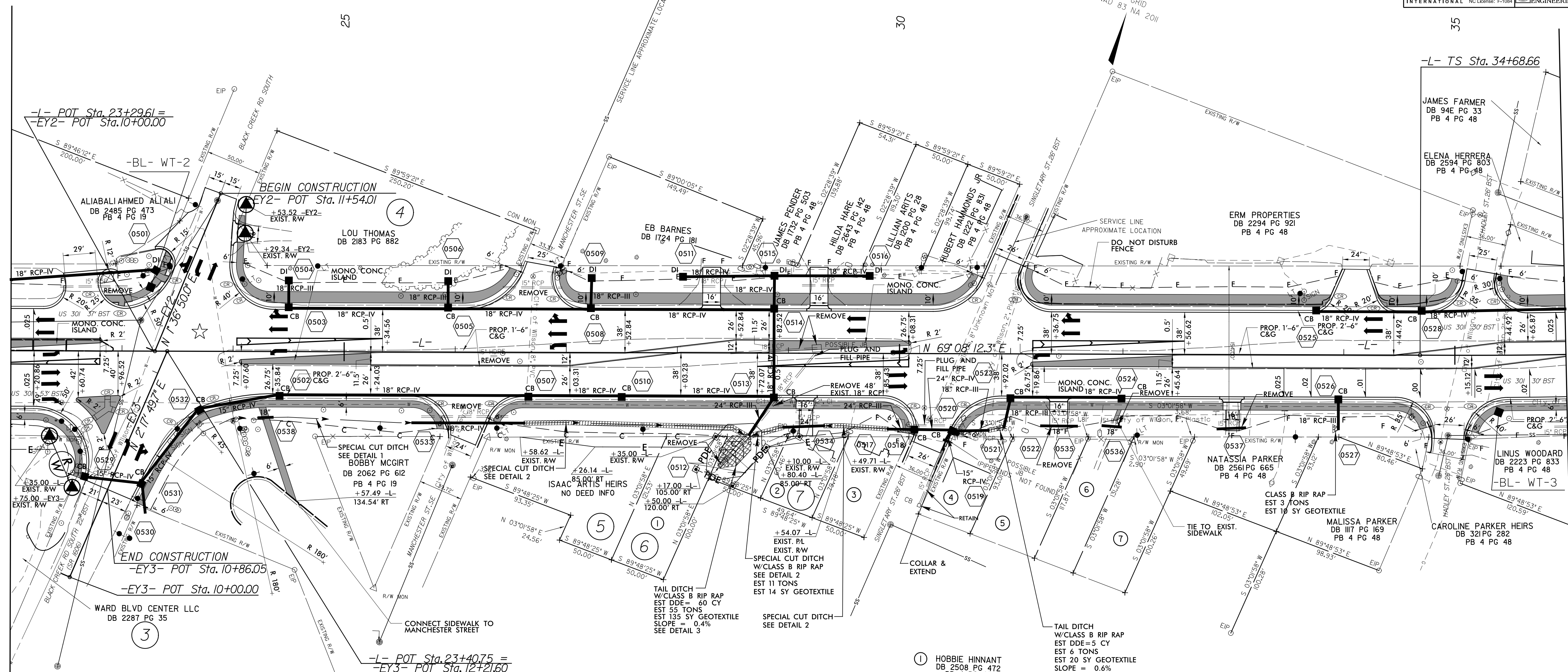


-L-		
Pls Sta 35+66.66	Pl Sta 44+91.24	Pls Sta 53+43.81
$\Delta s = 1' 45' 16.9''$	$\Delta = 40' 05' 11.7''$ (LT)	$\Delta s = 1' 45' 16.9''$
$Ls = 147.00'$	$D = 2' 23' 14.4''$	$Ls = 147.00'$
$LT = 98.00'$	$L = 1,679.14'$	$LT = 98.00'$
$ST = 49.00'$	$T = 875.58'$	$ST = 49.00'$
	$R = 2,400.00'$	
	$Ds = 50$ MPH	
	$SE = 0.04$	
	$RUNOFF = 147.00'$	

PROJECT REFERENCE NO. U-5935	SHEET NO. 5
ROADWAY DESIGN ENGINEER SEAL 034367 DOUGLAS H. BUCKNER	HYDRAULICS ENGINEER SEAL 039102 BRANDON DARIAN
DOCUMENT NOT CONSIDERED FINAL UNLESS ALL SIGNATURES COMPLETED	
Michael Baker Engineering, Inc. 1133 SE Gary Parkway Suite 602, 27518 Durham, NC 27518 NC License: F-10684	

MATCH LINE -L- STA. 22 + 00.00 SEE SHEET 4

MATCH LINE -L- STA. 36 + 00.00 SEE SHEET 6



- ① HOBBIE HINNANT
DB 2508 PG 472
PB 4 PG 48
- ② GERALDINE MYLES
DB 2599 PG 321
PB 4 PG 48
- ③ JAMES PENDER
DB 1732 PG 503
PB 4 PG 48
- ④ D&M INVESTMENTS
OF ELM CITY LLC
DB 2293 PG 163
PB 4 PG 48
- ⑤ BRENDA SIMMONS
NO DEED
PB 4 PG 48
- ⑥ HELEN TUCKER
DB 1294 PG 932
PB 4 PG 48
- ⑦ MILDRED BATTS
DB 2346 PG 621
PB 4 PG 48

☆ = REVISED SIGNAL

FOR -L- PROFILE SEE SHEETS 15 & 16

R:\15-JUL-2017\1425-U-5935-RDY-SHT_05.dgn