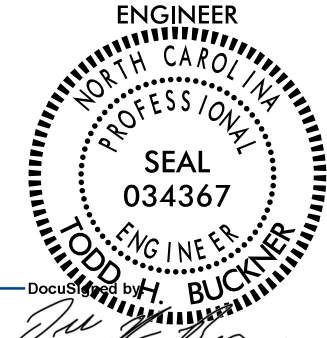
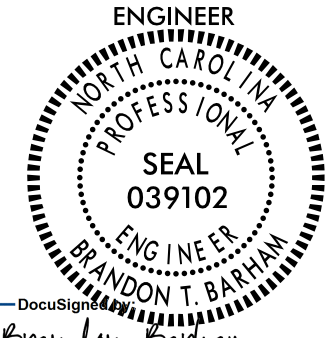
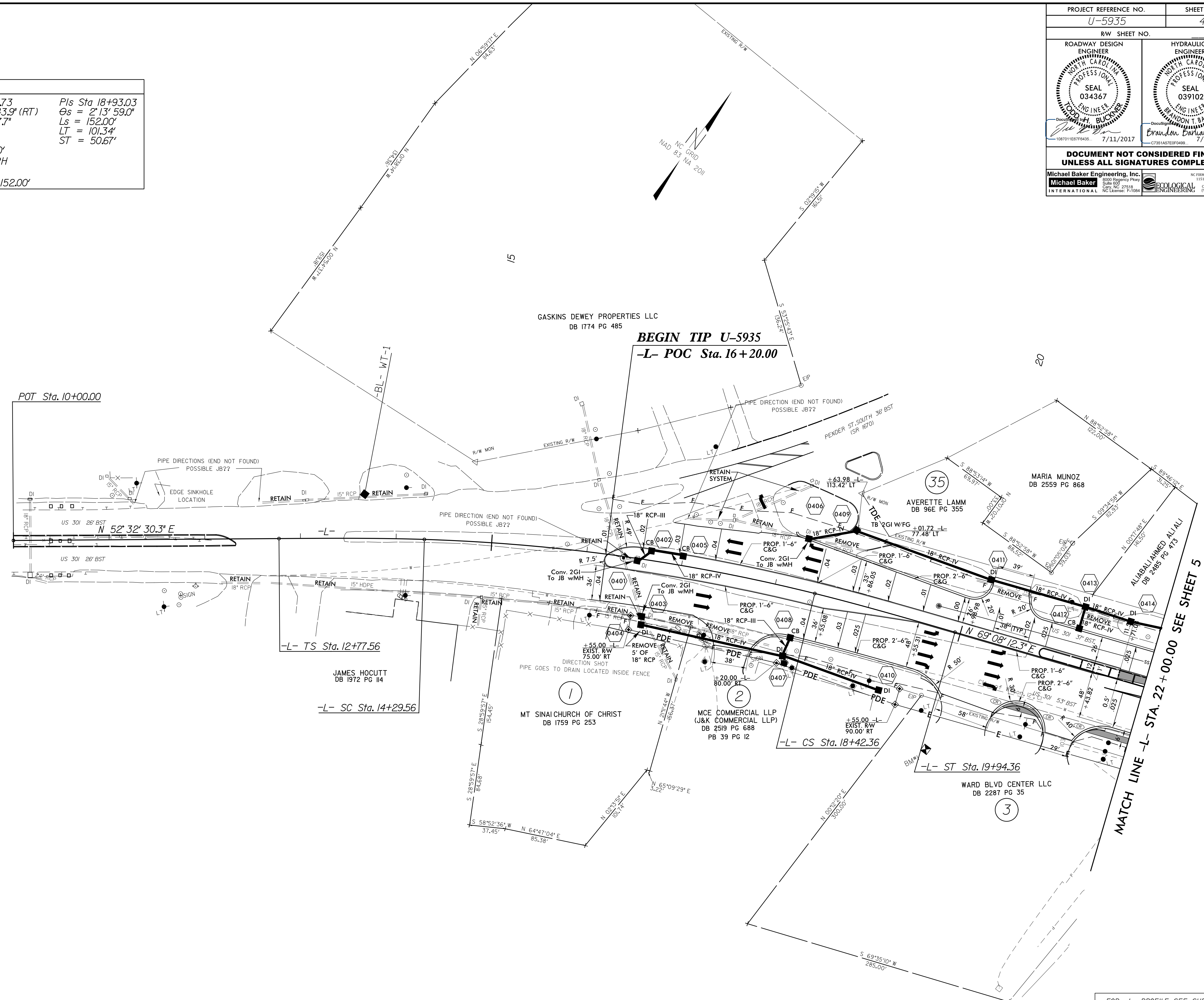


PROJECT REFERENCE NO. <b>U-5935</b>		SHEET NO. <b>4</b>	
RW SHEET NO.			
ROADWAY DESIGN ENGINEER 		HYDRAULICS ENGINEER 	
7/11/2017		7/11/2017	
<b>DOCUMENT NOT CONSIDERED FINAL UNLESS ALL SIGNATURES COMPLETED</b>			
Michael Baker Engineering, Inc. 11000 Research Parkway Suite 600 Charlotte, NC 27218 NC License: F-10684		ECOLOGICAL ENGINEERING 11000 Research Parkway Suite 101 Charlotte, NC 27218 NC License: F-10684	

-L-		
Pls Sta 13+78.91	Pls Sta 16+36.73	Pls Sta 18+93.03
$\theta_s = 2' 13'' 59.0''$	$\Delta = 12' 07'' 43.9'' (RT)$	$\theta_s = 2' 13'' 59.0''$
$L_s = 152.00'$	$D = 2' 56'' 17.7''$	$L_s = 152.00'$
$LT = 101.34'$	$L = 412.79'$	$LT = 101.34'$
$ST = 50.67'$	$T = 207.17'$	$ST = 50.67'$
	$R = 1,950.00'$	
	$D_s = 50 \text{ MPH}$	
	$SE = 0.04$	
	$RUNOFF = 152.00'$	



MATCH LINE -L- STA. 22+00.00 SEE SHEET 5

FOR -L- PROFILE SEE SHEET 15

5/14/19/99  
R:\0-JUL-2017 10:36 U-5935-RDY\_SHT\_04.dgn