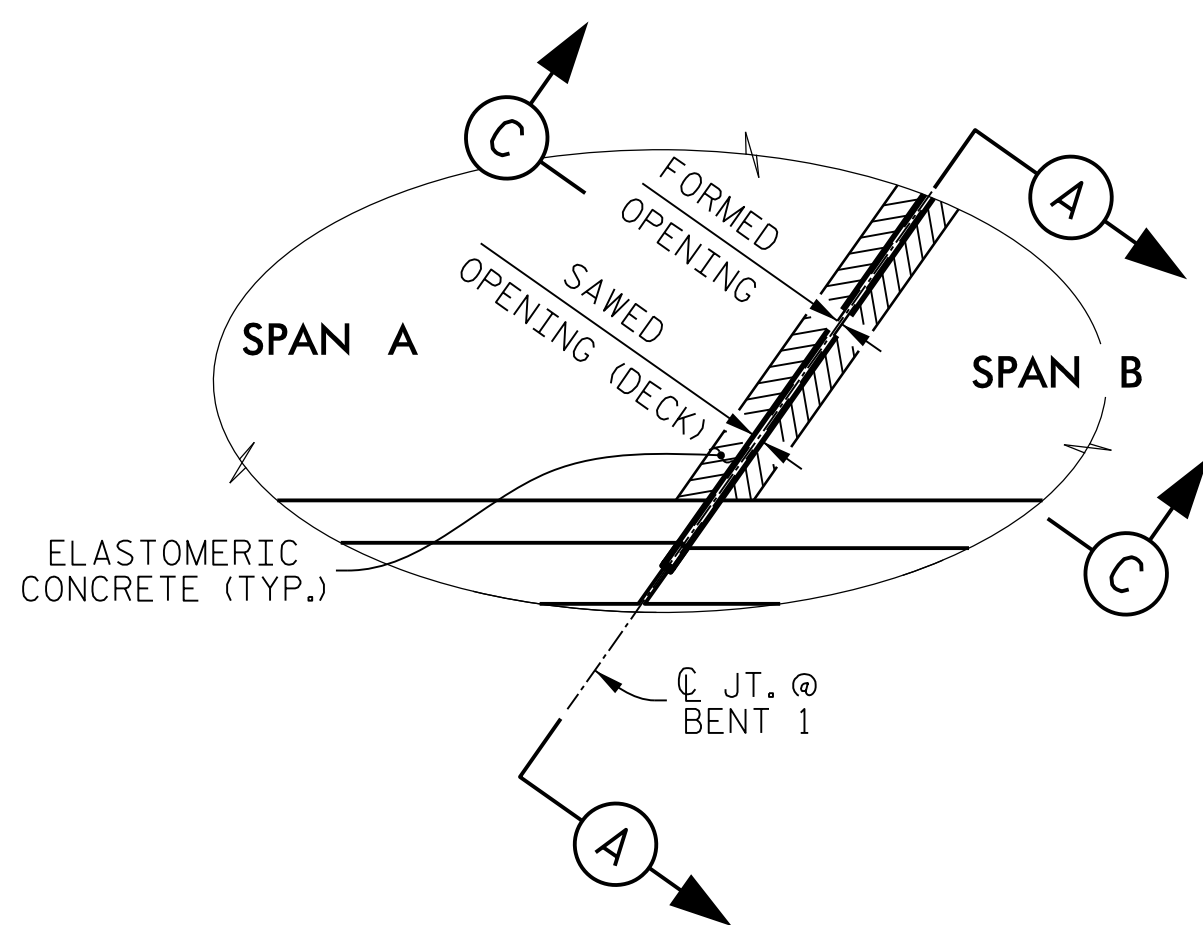
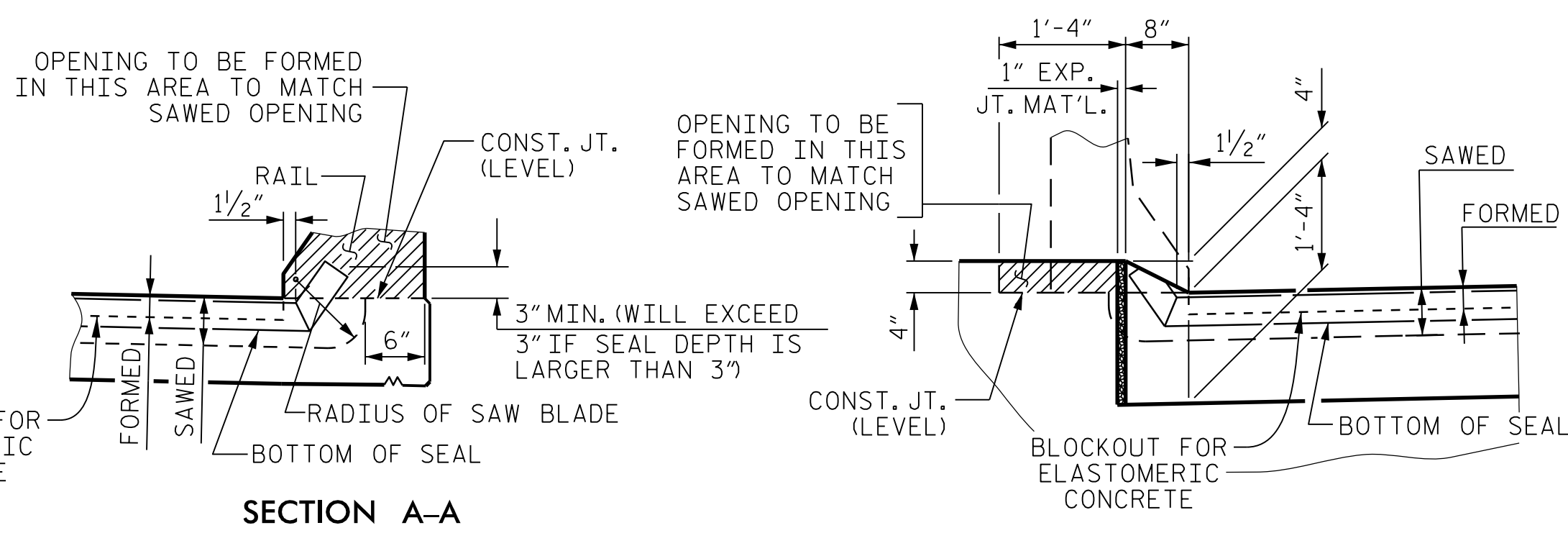


PLAN VIEW OF FOAM JOINT SEAL AT END BENT FOR BARRIER RAIL



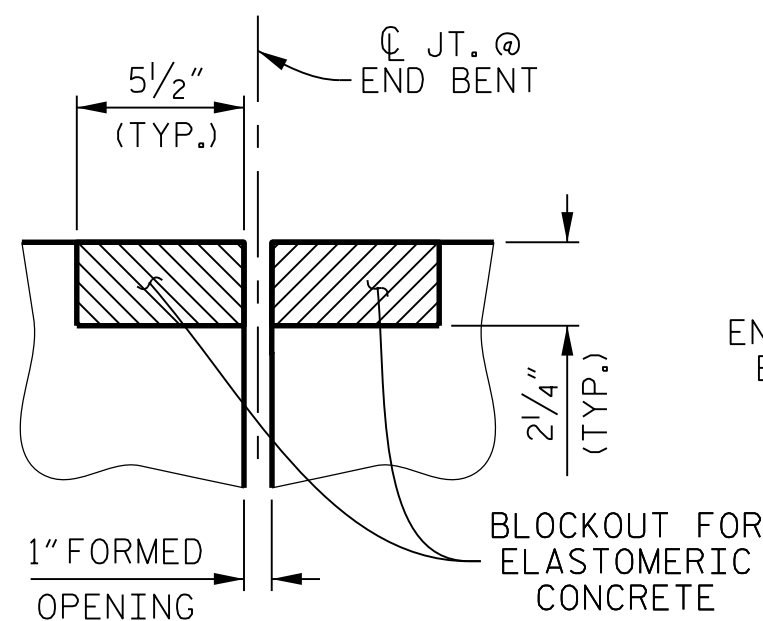
PLAN VIEW OF FOAM JOINT SEAL AT BENT FOR BARRIER RAIL



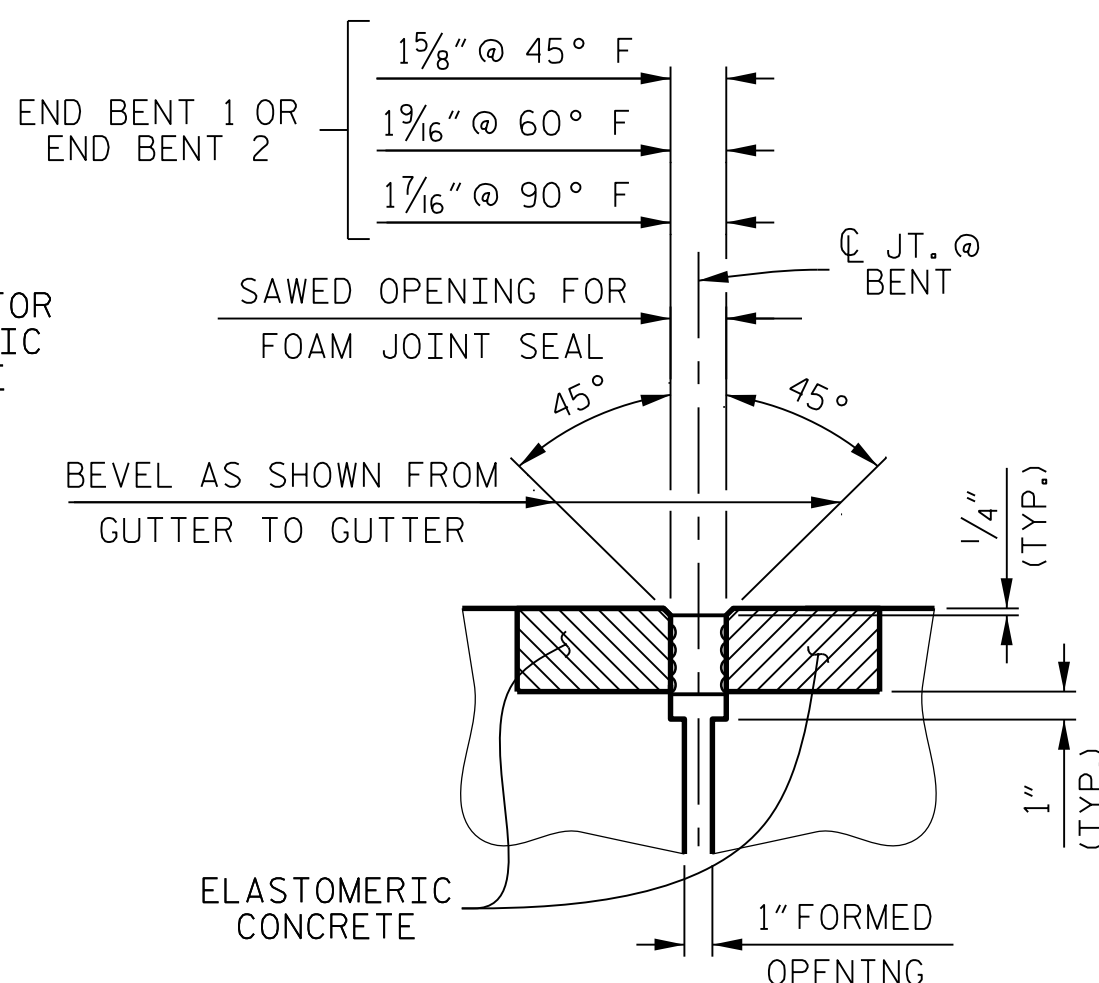
JOINT SEAL DETAILS AT END BENT FOR BARRIER RAIL

FOAM JOINT SEAL TO BE CUT, HEAT WELDED AND TURNED UP PARALLEL TO SLOPED FACE OF THE BARRIER RAIL.

THE JOINT SHALL BE SAWS PRIOR TO THE CASTING OF THE BARRIER RAIL.



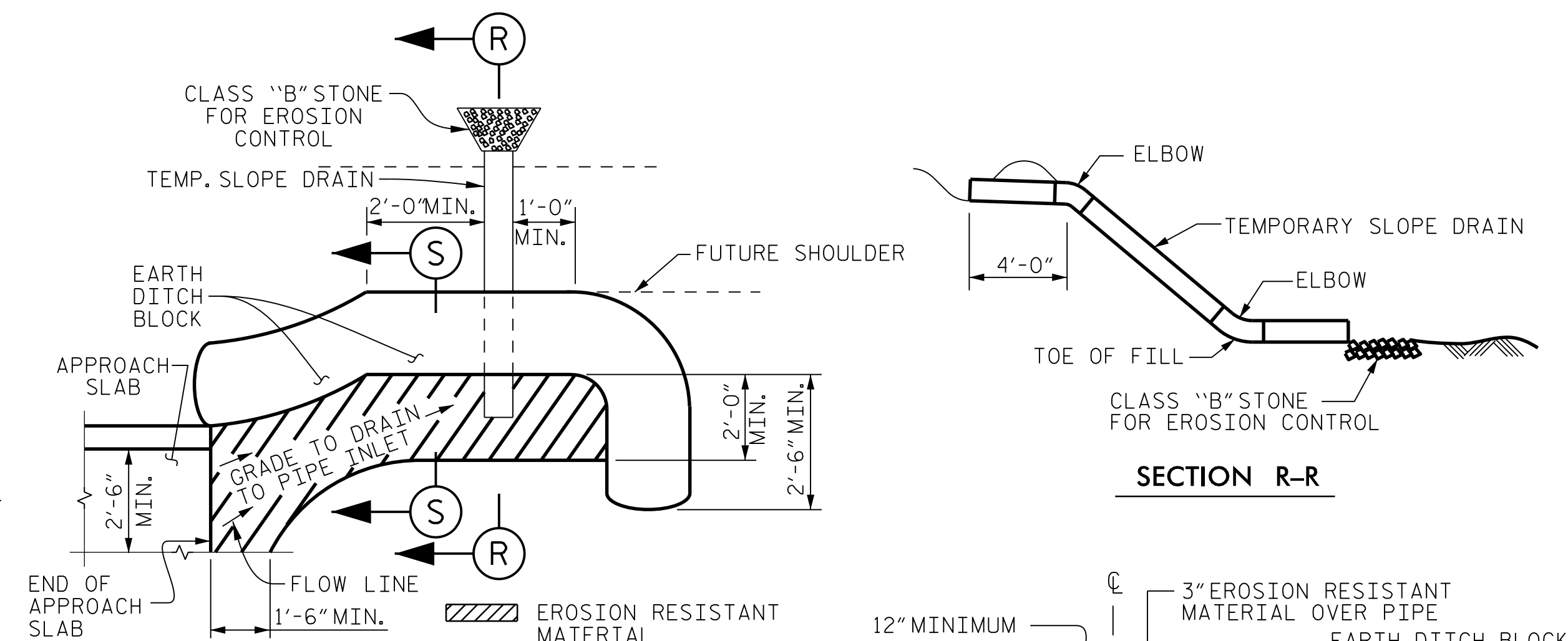
SECTION C-C
FOAM JOINT SEAL (PRE-SAWED ELASTOMERIC CONCRETE DIMENSIONS)



SECTION C-C

ELASTOMERIC CONCRETE	
LOCATION	ELASTOMERIC CONCRETE * (CU. FT.)
END BENT 1	8.7
BENT 1	9.6
END BENT 2	11.1
TOTAL	29.4

* BASED ON THE MINIMUM BLOCKOUT SHOWN.

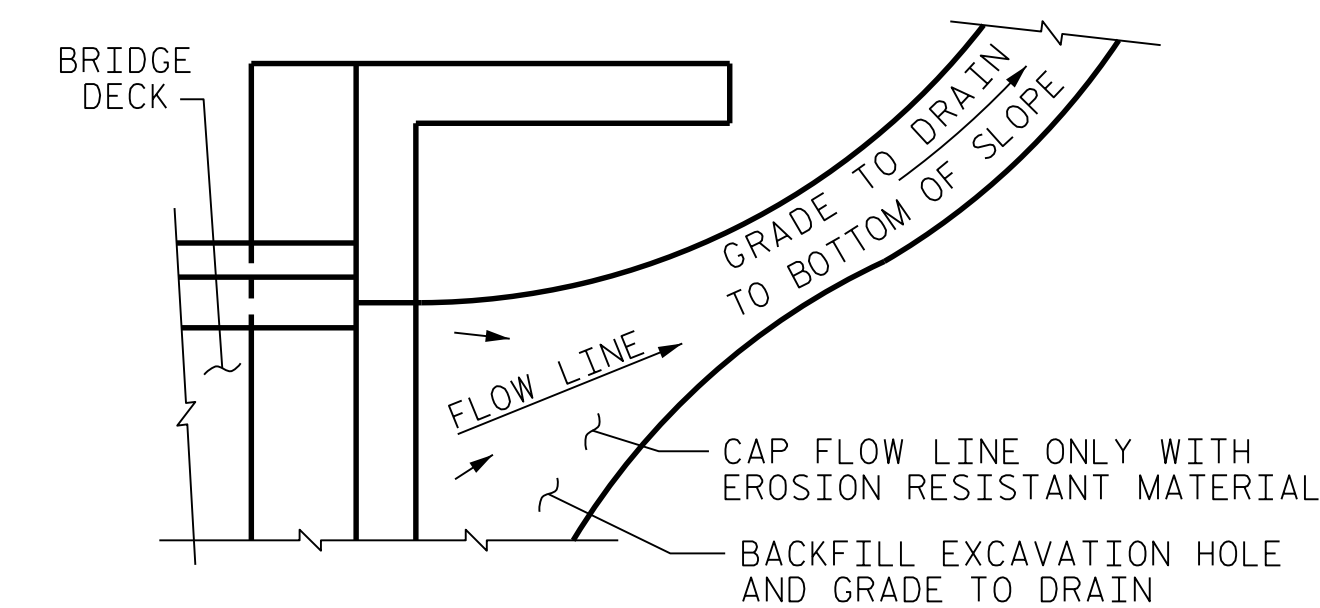


NOTE: IMMEDIATELY AFTER THE CONSTRUCTION OF THE APPROACH SLAB, THE CONTRACTOR SHALL PROVIDE TEMPORARY BERM AND SLOPE DRAIN. CONTRACTOR SHALL GRADE TO PIPE INLET AND PROVIDE EROSION RESISTANT MATERIAL AS SHOWN. THE EROSION RESISTANT MATERIAL SHALL BE EITHER 1) ASPHALT PLANT MIX, TYPE 1 OR TYPE 2, MIN. 2" DEPTH, 2) EROSION CONTROL MAT, OR 3) CONCRETE, AS DIRECTED BY THE ENGINEER. THE SLOPE DRAIN SHALL CONSIST OF A NON-PERFORATED TEMPORARY DRAINAGE PIPE, 12 INCHES IN DIAMETER.

PLAN VIEW

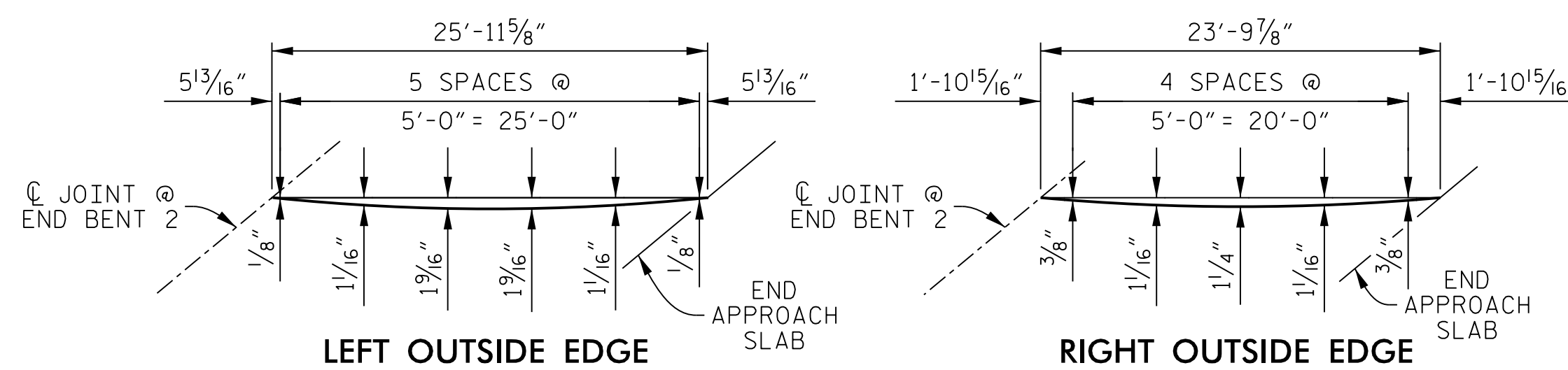
TEMPORARY BERM AND SLOPE DRAIN DETAILS

(TO BE USED WHEN SHOULDER BERM GUTTER IS REQUIRED)



NOTE: IF THE APPROACH SLAB IS NOT CONSTRUCTED IMMEDIATELY AFTER THE BACKFILLING OF THE END BENT EXCAVATION, GRADE TO DRAIN TO THE BOTTOM OF THE SLOPE AND PROVIDE EROSION RESISTANT MATERIAL, SUCH AS FIBERGLASS ROVING OR AS DIRECTED BY THE ENGINEER TO PREVENT SOIL EROSION AND TO PROTECT THE AREA ADJACENT TO THE STRUCTURE. THE CONTRACTOR WILL BE REQUIRED TO REMOVE THESE MATERIALS PRIOR TO CONSTRUCTION OF THE APPROACH SLAB.

TEMPORARY DRAINAGE DETAIL



ARC OFFSETS - APPROACH SLAB AT END BENT 2

DRAWN BY : K. E. LOFTON DATE : 7-17
 CHECKED BY : A. D. SHAH DATE : 7-17
 DESIGN ENGINEER : S. PHAN DATE : 7-17

PLANS PREPARED BY : **PARSONS**
 5540 CenterView Drive, Suite 217
 Raleigh, NC 27606-3386
 NC LICENSE No. F-0246

DOCUMENT NOT CONSIDERED FINAL UNLESS ALL SIGNATURES COMPLETED

PROJECT NO. **I-4729A**
POLK COUNTY
 STATION: **21 + 44.22 -RP_F-**

SHEET 2 OF 2

STATE OF NORTH CAROLINA DEPARTMENT OF TRANSPORTATION RALEIGH					
STANDARD					
BRIDGE APPROACH SLAB DETAILS					
REVISIONS					
No.	BY:	DATE:	No.	BY:	DATE:
1			3		
2			4		

SHEET No. **S2-30**
 TOTAL SHEETS **31**
 STR. #2