

SUPERSTRUCTURE REINFORCING STEEL LENGTHS ARE BASED ON THE FOLLOWING MINIMUM SPLICE LENGTHS

BAR SIZE	SUPERSTRUCTURE EXCEPT APPROACH SLABS, PARAPET AND BARRIER RAIL		APPROACH SLABS		PARAPET AND BARRIER RAIL
	EPOXY COATED	UNCOATED	EPOXY COATED	UNCOATED	
#4	2'-0"	1'-9"	2'-0"	1'-9"	2'-9"
#5	2'-6"	2'-2"	2'-6"	2'-2"	3'-5"
#6	3'-0"	2'-7"	3'-10"	2'-7"	4'-4"
#7	5'-3"	3'-6"			
#8	6'-10"	4'-7"			

TOTAL SUPERSTRUCTURE QUANTITIES

	REINFORCING STEEL	EPOXY COATED REINFORCING STEEL	CLASS "AA" CONCRETE
	LBS.	LBS.	CU. YDS.
SPAN A	16,485	12,929	146.7
SPAN B	18,315	14,657	166.6
** TOTAL	34,800	27,586	313.3

**QUANTITIES FOR CONCRETE BARRIER RAIL ARE NOT INCLUDED. SEE "CONCRETE BARRIER RAIL" SHEET FOR DETAILS.

GROOVING BRIDGE FLOORS

	SQ. FT.
APPROACH SLAB AT END BENT 1	962
BRIDGE DECK SPAN A	3,595
BRIDGE DECK SPAN B	4,088
APPROACH SLAB AT END BENT 2	935
TOTAL	9,581

SPAN A

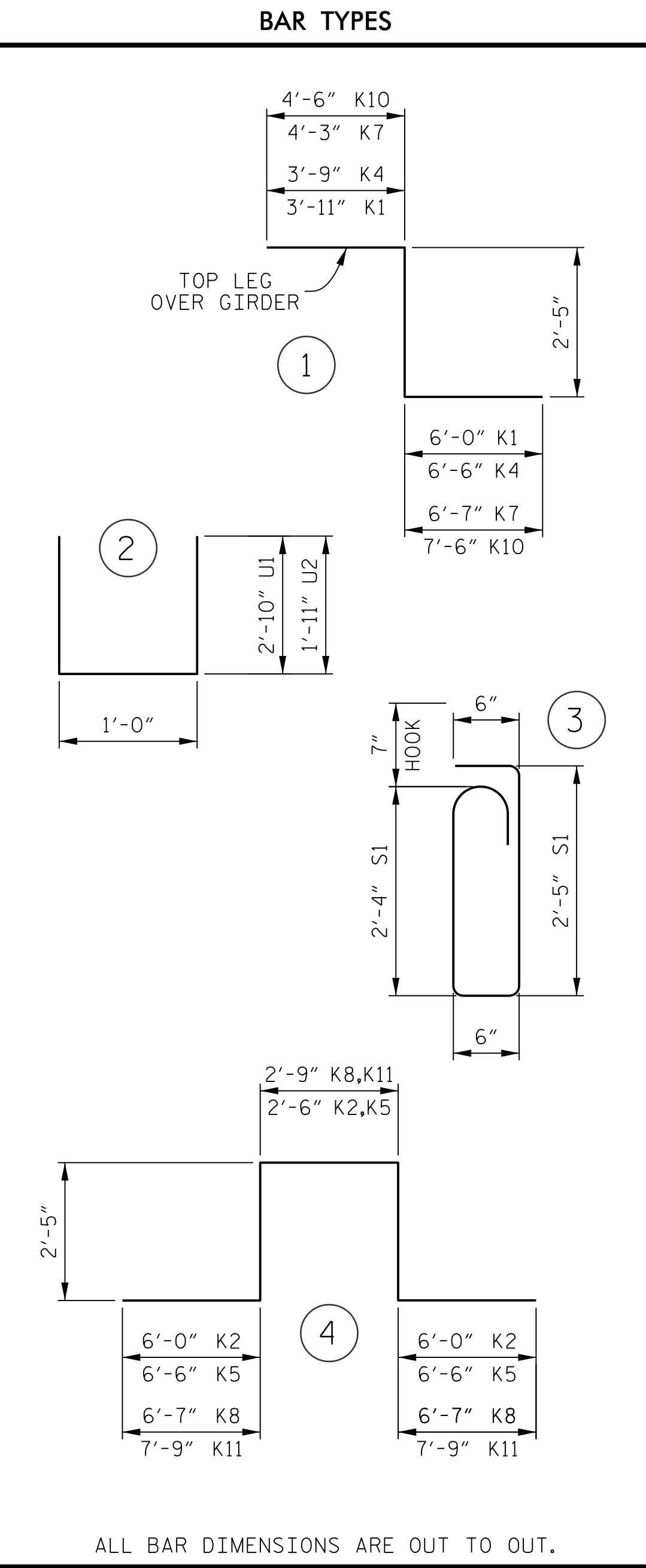
BAR No.	SIZE	TYPE	LENGTH	WEIGHT
*A1	114	#5	STR 46'-11"	5,578
*A101	3	#5	STR 44'-11"	141
*A102	3	#5	STR 42'-8"	134
*A103	3	#5	STR 40'-4"	126
*A104	3	#5	STR 38'-1"	119
*A105	3	#5	STR 35'-9"	112
*A106	3	#5	STR 33'-6"	105
*A107	3	#5	STR 31'-2"	98
*A108	3	#5	STR 28'-11"	90
*A109	3	#5	STR 26'-7"	83
*A110	3	#5	STR 24'-3"	76
*A111	3	#5	STR 22'-0"	69
*A112	3	#5	STR 19'-8"	62
*A113	3	#5	STR 17'-4"	54
*A114	3	#5	STR 15'-0"	47
*A115	3	#5	STR 12'-9"	40
*A116	3	#5	STR 10'-5"	33
*A117	3	#5	STR 8'-1"	25
*A118	3	#5	STR 5'-9"	18
*A119	3	#5	STR 3'-6"	11
*A120	3	#6	STR 6'-0"	27
*A121	3	#5	STR 45'-1"	141
*A122	3	#5	STR 42'-10"	134
*A123	3	#5	STR 40'-9"	128
*A124	3	#5	STR 38'-7"	121
*A125	3	#5	STR 36'-6"	114
*A126	3	#5	STR 34'-4"	107
*A127	3	#5	STR 32'-3"	101
*A128	3	#5	STR 30'-1"	94
*A129	3	#5	STR 28'-0"	88
*A130	3	#5	STR 25'-11"	81
*A131	3	#5	STR 23'-9"	74
*A132	3	#5	STR 21'-8"	68
*A133	3	#5	STR 19'-7"	61
*A134	3	#5	STR 17'-6"	55
*A135	3	#5	STR 15'-5"	48
*A136	3	#5	STR 13'-4"	42
*A137	3	#5	STR 11'-3"	35
*A138	3	#5	STR 9'-2"	29
*A139	3	#5	STR 7'-1"	22
*A140	3	#5	STR 5'-0"	16
*A141	3	#5	STR 3'-0"	9
*A142	3	#6	STR 7'-6"	34

NOTE: BAR A220 HAS BEEN OMITTED.

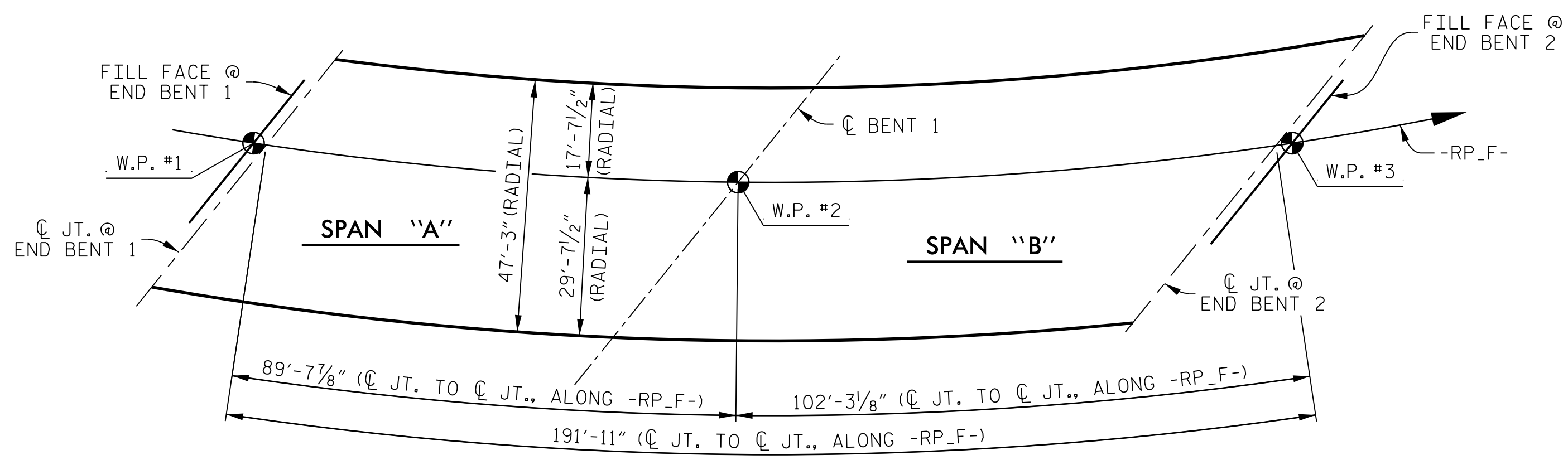
SPAN B

BAR No.	SIZE	TYPE	LENGTH	WEIGHT
*A1	116	#5	STR 46'-11"	5,676
*A301	3	#5	STR 45'-3"	142
*A302	3	#5	STR 43'-7"	136
*A303	3	#5	STR 41'-10"	131
*A304	3	#5	STR 40'-2"	126
*A305	3	#5	STR 38'-5"	120
*A306	3	#5	STR 36'-9"	115
*A307	3	#5	STR 35'-0"	110
*A308	3	#5	STR 33'-3"	104
*A309	3	#5	STR 31'-7"	99
*A310	3	#5	STR 29'-10"	93
*A311	3	#5	STR 28'-1"	88
*A312	3	#5	STR 26'-4"	82
*A313	3	#5	STR 24'-8"	77
*A314	3	#5	STR 22'-11"	72
*A315	3	#5	STR 21'-2"	66
*A316	3	#5	STR 19'-5"	61
*A317	3	#5	STR 17'-8"	55
*A318	3	#5	STR 15'-11"	50
*A319	3	#5	STR 14'-2"	44
*A320	3	#5	STR 12'-5"	39
*A321	3	#5	STR 10'-7"	33
*A322	3	#5	STR 8'-10"	28
*A323	3	#5	STR 7'-1"	22
*A324	3	#5	STR 5'-4"	17
*A325	3	#5	STR 3'-6"	11
*A326	3	#6	STR 6'-0"	27
*A327	3	#5	STR 45'-4"	142
*A328	3	#5	STR 43'-9"	137
*A329	3	#5	STR 42'-3"	132
*A330	3	#5	STR 40'-8"	127
*A331	3	#5	STR 39'-1"	122
*A332	3	#5	STR 37'-7"	118
*A333	3	#5	STR 36'-0"	113
*A334	3	#5	STR 34'-6"	108
*A335	3	#5	STR 33'-0"	103
*A336	3	#5	STR 31'-5"	98
*A337	3	#5	STR 29'-11"	94
*A338	3	#5	STR 28'-5"	89
*A339	3	#5	STR 26'-11"	84
*A340	3	#5	STR 25'-4"	79
*A341	3	#5	STR 23'-10"	75
*A342	3	#5	STR 22'-4"	70
*A343	3	#5	STR 20'-10"	65
*A344	3	#5	STR 19'-4"	60
*A345	3	#5	STR 17'-10"	56
*A346	3	#5	STR 16'-4"	51
*A347	3	#5	STR 14'-10"	46
*A348	3	#5	STR 13'-5"	42
*A349	3	#5	STR 11'-11"	37
*A350	3	#5	STR 10'-5"	33
*A351	3	#5	STR 8'-11"	28
*A352	3	#5	STR 7'-6"	23
*A353	3	#5	STR 6'-0"	19
*A354	3	#5	STR 4'-7"	14
*A355	3	#5	STR 3'-1"	10
*A356	3	#6	STR 8'-3"	37

NOTE: BAR A426 HAS BEEN OMITTED.



ALL BAR DIMENSIONS ARE OUT TO OUT.



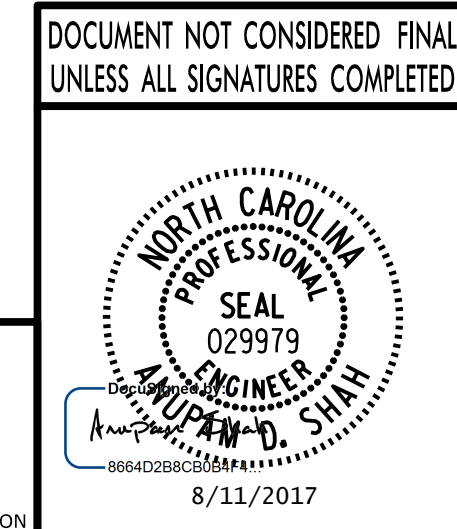
LAYOUT FOR COMPUTING AREA OF REINFORCED CONCRETE DECK SLAB
(9,019 SQ. FT.)

PROJECT NO. **I-4729A**
POLK COUNTY
STATION: **21+44.22 -RP_F-**

STATE OF NORTH CAROLINA
DEPARTMENT OF TRANSPORTATION
RALEIGH

SUPERSTRUCTURE BILL OF MATERIAL

REVISIONS						SHEET No.
No.	BY:	DATE:	No.	BY:	DATE:	S2-19
1			3			TOTAL SHEETS
2			4			31



PLANS PREPARED BY:
PARSONS
5540 Centerview Drive, Suite 217
Raleigh, NC 27606-3386
NC LICENSE No. F-0246
FOR NORTH CAROLINA DEPARTMENT OF TRANSPORTATION

DRAWN BY: **K. E. LOFTON** DATE: **7-17**
CHECKED BY: **A. D. SHAH** DATE: **7-17**
DESIGN ENGINEER: **S. PHAN** DATE: **7-17**