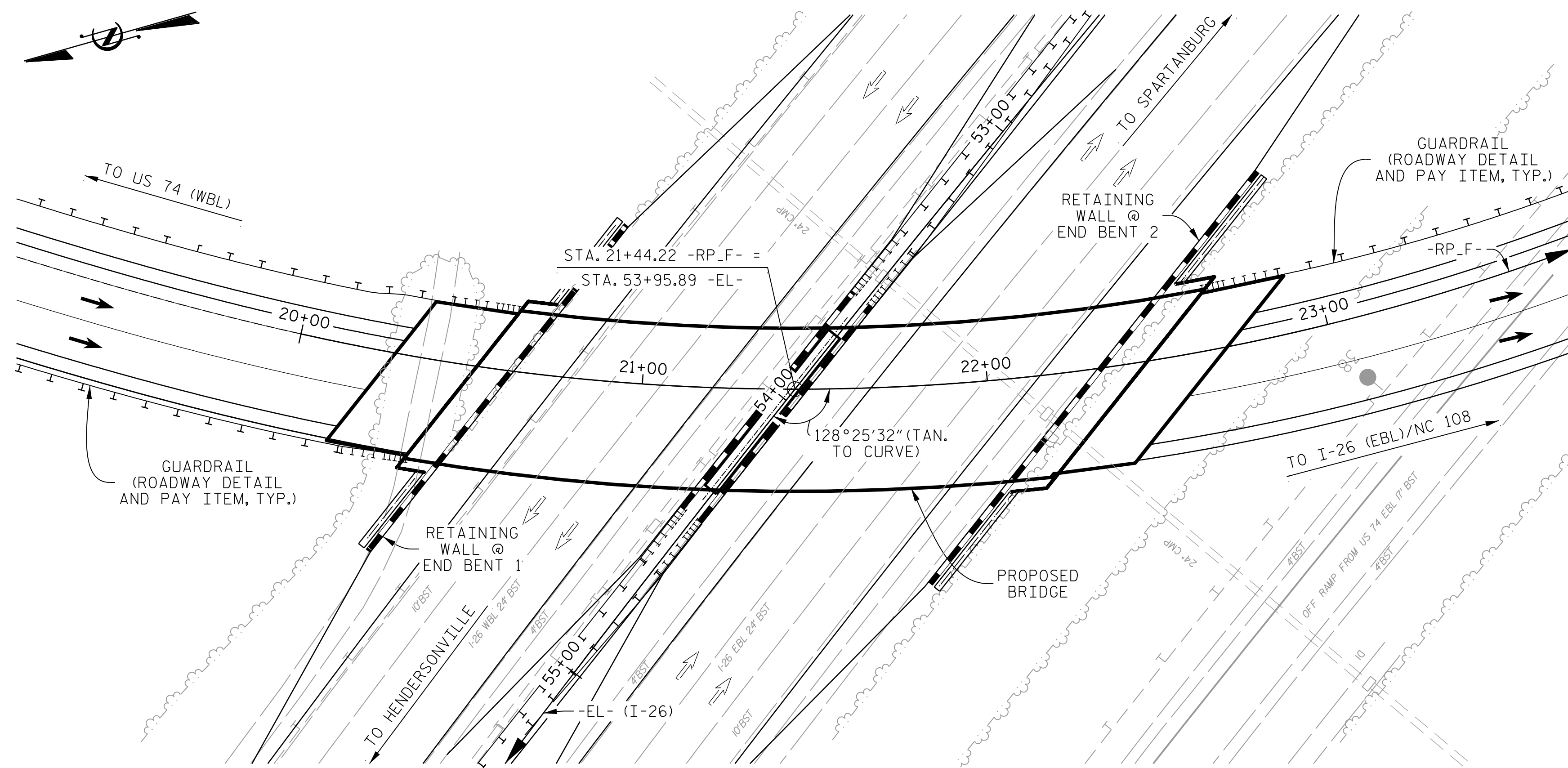


BENCHMARK: #6 - RAILROAD SPIKE IN BASE 20" WHITE OAK 577.68' RIGHT OF
 STA. 18+44.38 -RP_F- EL. 1080.99 N 561443.04 E 1041924.09



LOCATION SKETCH

NOTES

ASSUMED LIVE LOAD = HL 93 OR ALTERNATE LOADING.

THIS BRIDGE HAS BEEN DESIGNED IN ACCORDANCE WITH THE AASHTO LRFD BRIDGE DESIGN SPECIFICATIONS.

THIS BRIDGE IS LOCATED IN SEISMIC ZONE 1.

FOR OTHER DESIGN DATA AND GENERAL NOTES, SEE "STANDARD NOTES" SHEET.

THE CLASS AA CONCRETE IN THE BRIDGE DECK SHALL CONTAIN FLY ASH OR GROUND GRANULATED BLAST FURNACE SLAG AT THE SUBSTITUTION RATE SPECIFIED IN ARTICLE 1024-1 AND IN ACCORDANCE WITH ARTICLES 1024-5 AND 1024-6 OF THE STANDARD SPECIFICATIONS. NO PAYMENT WILL BE MADE FOR THIS SUBSTITUTION AS IT IS CONSIDERED INCIDENTAL TO THE COST OF THE REINFORCED CONCRETE DECK SLAB.

REMOVABLE FORMS MAY BE USED IN LIEU OF METAL STAY-IN-PLACE FORMS IN ACCORDANCE WITH ARTICLE 420-3 OF THE STANDARD SPECIFICATIONS.

THE LOCATION OF THE CONSTRUCTION JOINT IN THE DRILLED PIERS IS BASED ON AN APPROXIMATE GROUND LINE ELEVATION. IF THE CONSTRUCTION JOINT IS ABOVE THE ACTUAL GROUND ELEVATION, THE CONTRACTOR SHALL PLACE THE CONSTRUCTION JOINT 1 FT. BELOW THE GROUND LINE.

ALL REINFORCING STEEL SHALL BE GRADE 60.

NEEDLE BEAMS WILL NOT BE ALLOWED UNLESS OTHERWISE CALLED FOR ON THE PLANS OR APPROVED BY THE ENGINEER.

FOR SUBMITTAL OF WORKING DRAWINGS, SEE SPECIAL PROVISIONS.

FOR GROUT FOR STRUCTURES, SEE SPECIAL PROVISIONS.

FOR EROSION CONTROL MEASURES, SEE EROSION CONTROL PLANS.

FOR FALSEWORK AND FORMWORK, SEE SPECIAL PROVISIONS.

FOR CRANE SAFETY, SEE SPECIAL PROVISIONS.

FOR PLACING LOAD ON STRUCTURE MEMBERS, SEE SPECIAL PROVISIONS.

FOR MAINTENANCE AND PROTECTION OF TRAFFIC BENEATH PROPOSED STRUCTURE AT STA. 21+44.22 -RP_F-, SEE SPECIAL PROVISIONS.

1 A WAITING PERIOD IS NOT REQUIRED PRIOR TO THE CONSTRUCTION OF END BENTS.

THE ELEVATIONS AND CLEARANCES SHOWN ON THE PLANS AT THE POINT OF MINIMUM VERTICAL CLEARANCE ARE FROM THE BEST INFORMATION AVAILABLE. PRIOR TO BEGINNING BRIDGE CONSTRUCTION, VERIFY THE ELEVATIONS ON THE EXISTING PAVEMENT AND CHECK THE CLEARANCE. REPORT ANY VARIATIONS TO THE ENGINEER. ANY PLAN REVISIONS NECESSARY TO ACHIEVE THE REQUIRED MINIMUM VERTICAL CLEARANCE WILL BE PROVIDED BY THE DEPARTMENT.

TOTAL BILL OF MATERIAL

	4'-0" Ø DRILLED PIERS IN SOIL	4'-0" Ø DRILLED PIERS NOT IN SOIL	PDA TESTING	SID INSPECTIONS	CSL TESTING	REINFORCED CONCRETE DECK SLAB	GROOVING BRIDGE FLOORS	CLASS A CONCRETE	BRIDGE APPROACH SLABS	REINFORCING STEEL	SPIRAL COLUMN REINFORCING STEEL	54" PRESTRESSED CONCRETE GIRDERS	HP 14 x 89 STEEL PILES	CONCRETE BARRIER RAIL	4" SLOPE PROTECTION	ELASTOMERIC BEARINGS	FOAM JOINT SEALS	PILE DRIVING EQUIPMENT SETUP FOR HP 14 x 89 STEEL PILES		
	LIN. FT.	LIN. FT.	EACH	EACH	EACH	SQ. FT.	SQ. FT.	CU. YDS.	LUMP SUM	LBS.	LBS.	No.	LIN. FT.	No.	LIN. FT.	LIN. FT.	SQ. YD.	LUMP SUM	LUMP SUM	EACH
SUPERSTRUCTURE						9,019	9,581		LUMP SUM			12	1,123.7			382.4		LUMP SUM	LUMP SUM	
END BENT 1								71.5		7,755			12	630.0		19				12
BENT 1	107.5	30.0		1	1			66.6		33,245	5,006									
END BENT 2								87.6		9,330			12	660.0		26				12
TOTAL	107.5	30.0	1	1	1	9,019	9,581	225.7	LUMP SUM	50,330	5,006	12	1,123.7	24	1,290.0	382.4	45	LUMP SUM	LUMP SUM	24

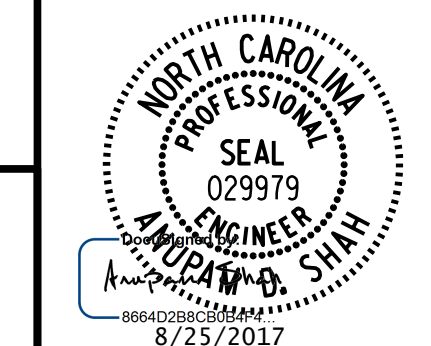
PROJECT NO. I-4729A
 POLK COUNTY
 STATION: 21+44.22 -RP_F-

SHEET 4 OF 4

STATE OF NORTH CAROLINA
 DEPARTMENT OF TRANSPORTATION
 RALEIGH

GENERAL DRAWING
 BRIDGE OVER I-26 (-EL-)
 ON RAMP (-RP_F-)
 BETWEEN US-74 AND I-26

DOCUMENT NOT CONSIDERED FINAL
 UNLESS ALL SIGNATURES COMPLETED



1 REVISED PILE SIZE AND NOTE.

DRAWN BY : K. E. LOFTON DATE : 7-17
 CHECKED BY : A. D. SHAH DATE : 7-17
 DESIGN ENGINEER : S. PHAN DATE : 7-17

PLANS PREPARED BY :
PARSONS
 5540 CenterView Drive, Suite 217
 Raleigh, NC 27606-3386
 NC LICENSE No. F-0246
 FOR NORTH CAROLINA DEPARTMENT OF TRANSPORTATION

REVISIONS						SHEET No.
No.	BY:	DATE:	No.	BY:	DATE:	S2-4.1
1	LOFTON	8-25-17	3			TOTAL SHEETS
2			4			31