

NOTES

PROVIDE 1/4" HIGH BEAM BOLSTERS UPPER AT 4'-0" CTS. ATOP THE METAL STAY-IN-PLACE FORMS TO SUPPORT THE BOTTOM MAT OF "A" BARS. WHEN USING REMOVABLE FORMS, PROVIDE CONTINUOUS HIGH CHAIRS FOR METAL DECK (C.H.C.M.) @ 4'-0" CTS. WITH A HEIGHT TO SUPPORT THE BOTTOM MAT OF "A" BARS A CLEAR DISTANCE OF 2 1/2" ABOVE THE TOP OF THE REMOVABLE FORM.

LONGITUDINAL STEEL MAY BE SHIFTED SLIGHTLY, AS NECESSARY, TO AVOID INTERFERENCE WITH STIRRUPS IN PRESTRESSED CONCRETE GIRDERS.

PREVIOUSLY CAST CONCRETE IN SPAN "A" SHALL HAVE ATTAINED A MINIMUM COMPRESSIVE STRENGTH OF 3,000 PSI BEFORE ADDITIONAL CONCRETE IS CAST IN THE SPAN.

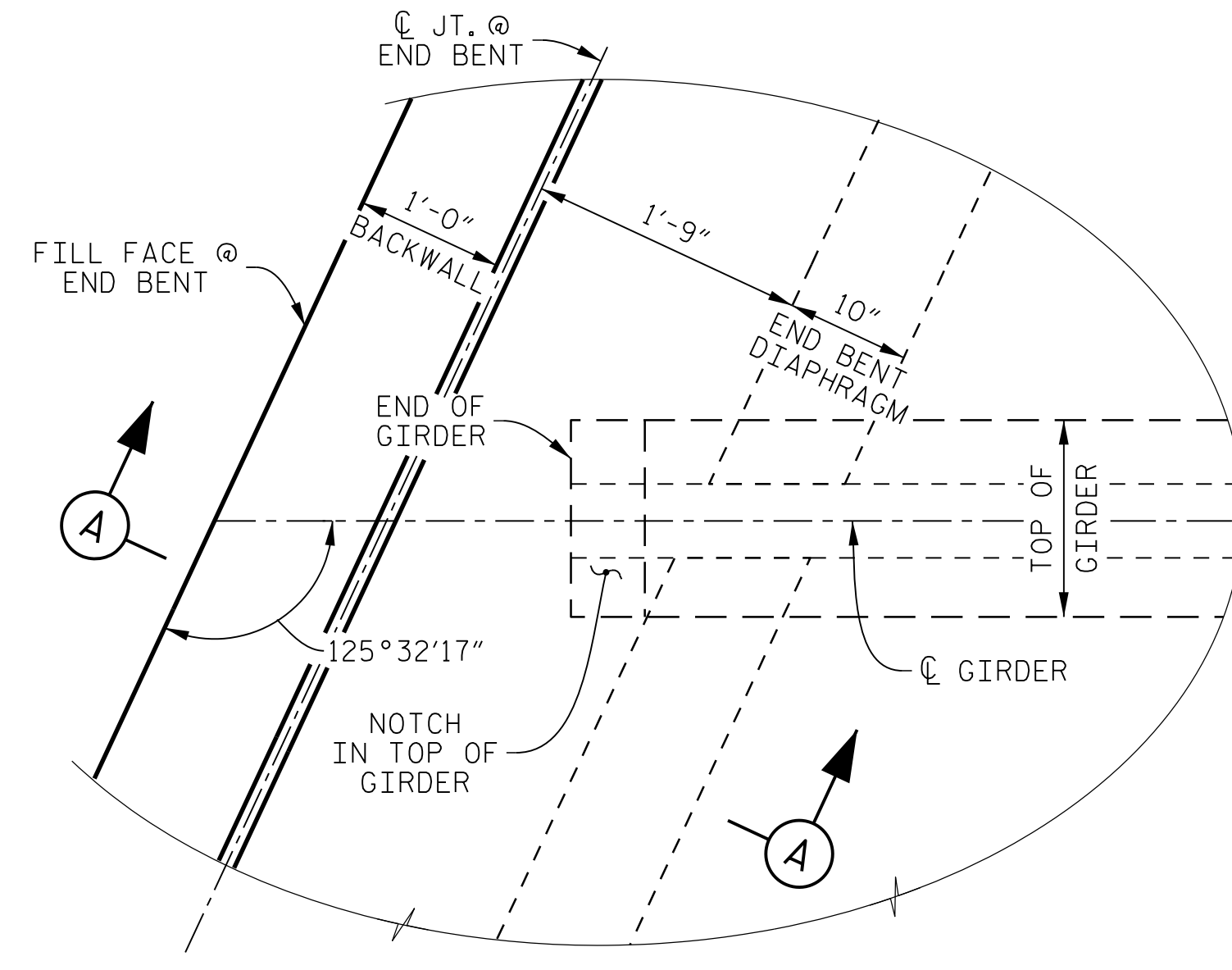
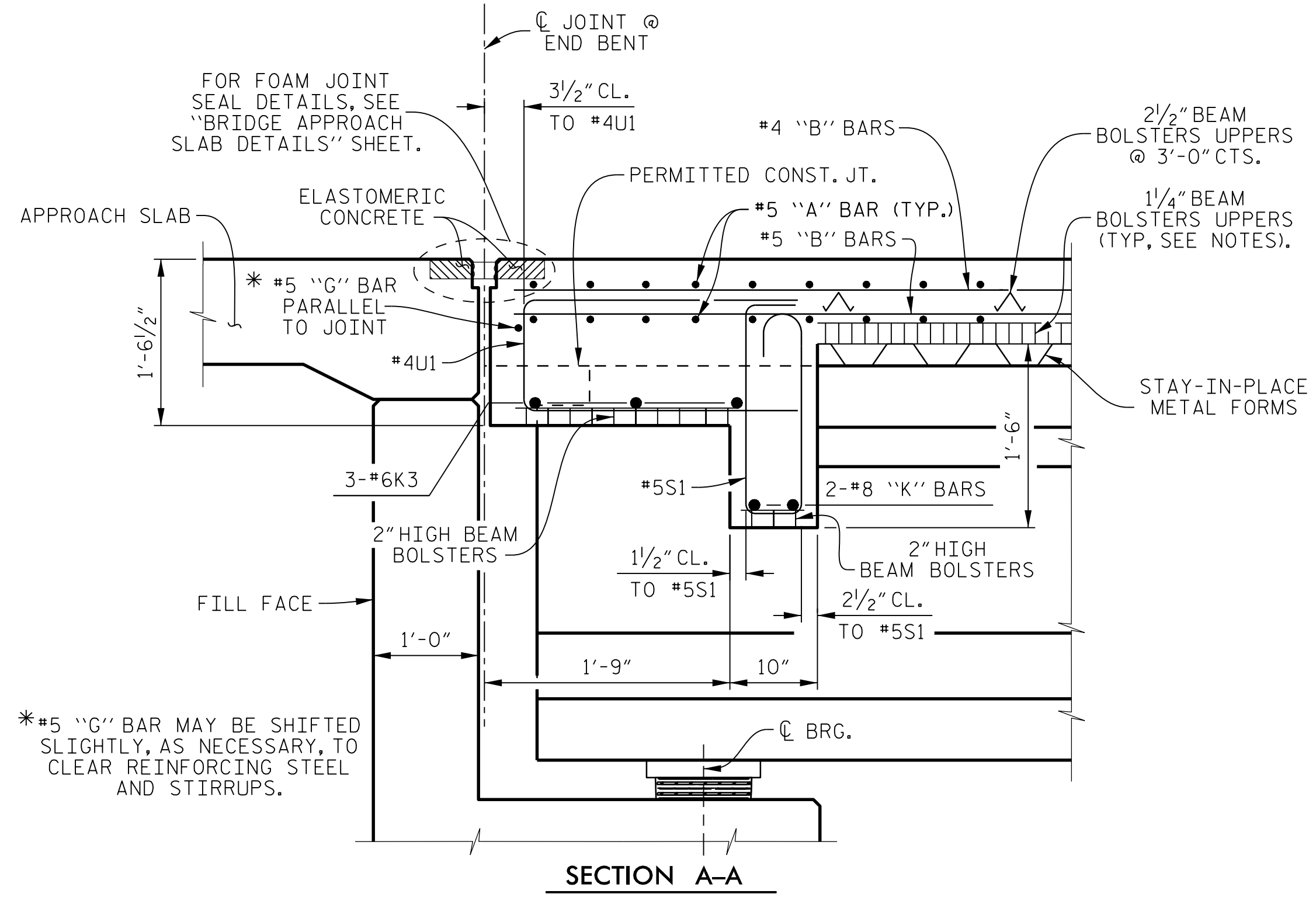
BARRIER RAIL IN SPAN "A" SHALL NOT BE CAST UNTIL ALL SLAB CONCRETE IN THE SPAN HAS BEEN CAST AND HAS REACHED A MINIMUM COMPRESSIVE STRENGTH OF 3,000 PSI.

FOR F-SHAPE CONCRETE BARRIER RAIL DETAILS, SEE "CONCRETE BARRIER RAIL" SHEET.

HALF SECTION AT INTERMEDIATE DIAPHRAGMS

HALF SECTION AT END BENT DIAPHRAGMS

TYPICAL SECTION

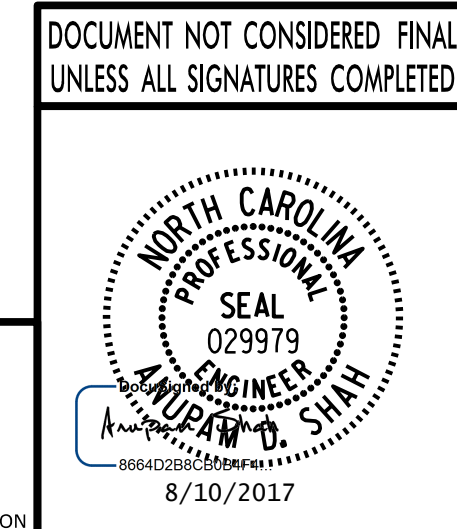


SECTION THRU END BENT DIAPHRAGM

PLAN OF DIAPHRAGM AT END BENT 1

PROJECT NO. **I-4729A**
POLK COUNTY
 STATION: **22 + 87.20 -RP_E-**

STATE OF NORTH CAROLINA
 DEPARTMENT OF TRANSPORTATION
 RALEIGH
SUPERSTRUCTURE
TYPICAL SECTION



PLANS PREPARED BY:
PARSONS
 5540 CenterView Drive, Suite 217
 Raleigh, NC 27606-3386
 NC LICENSE No. F-0246

REVISIONS

No.	BY:	DATE:	No.	BY:	DATE:
1			3		
2			4		

SHEET No.
S1-6
 TOTAL SHEETS
24

FILE: I:\Projects\Structures\Bridges\Final\02-I-4729A_ssm.spl, 8/10/2017
 DATE: 8/10/2017