

8/17/99

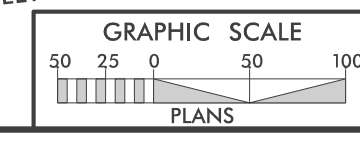
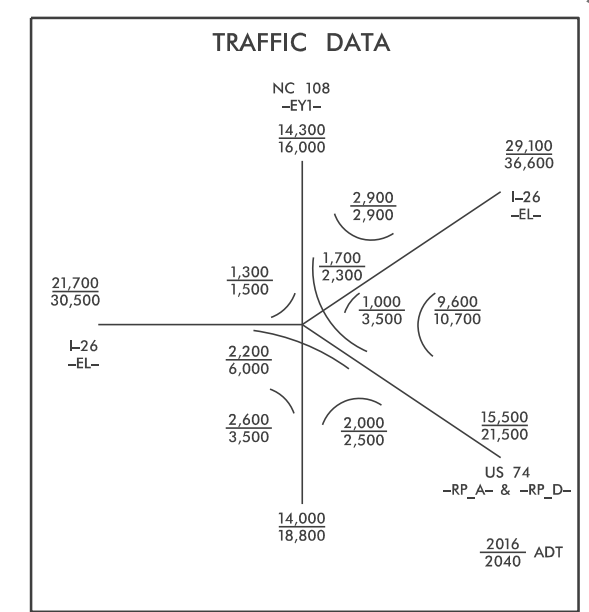
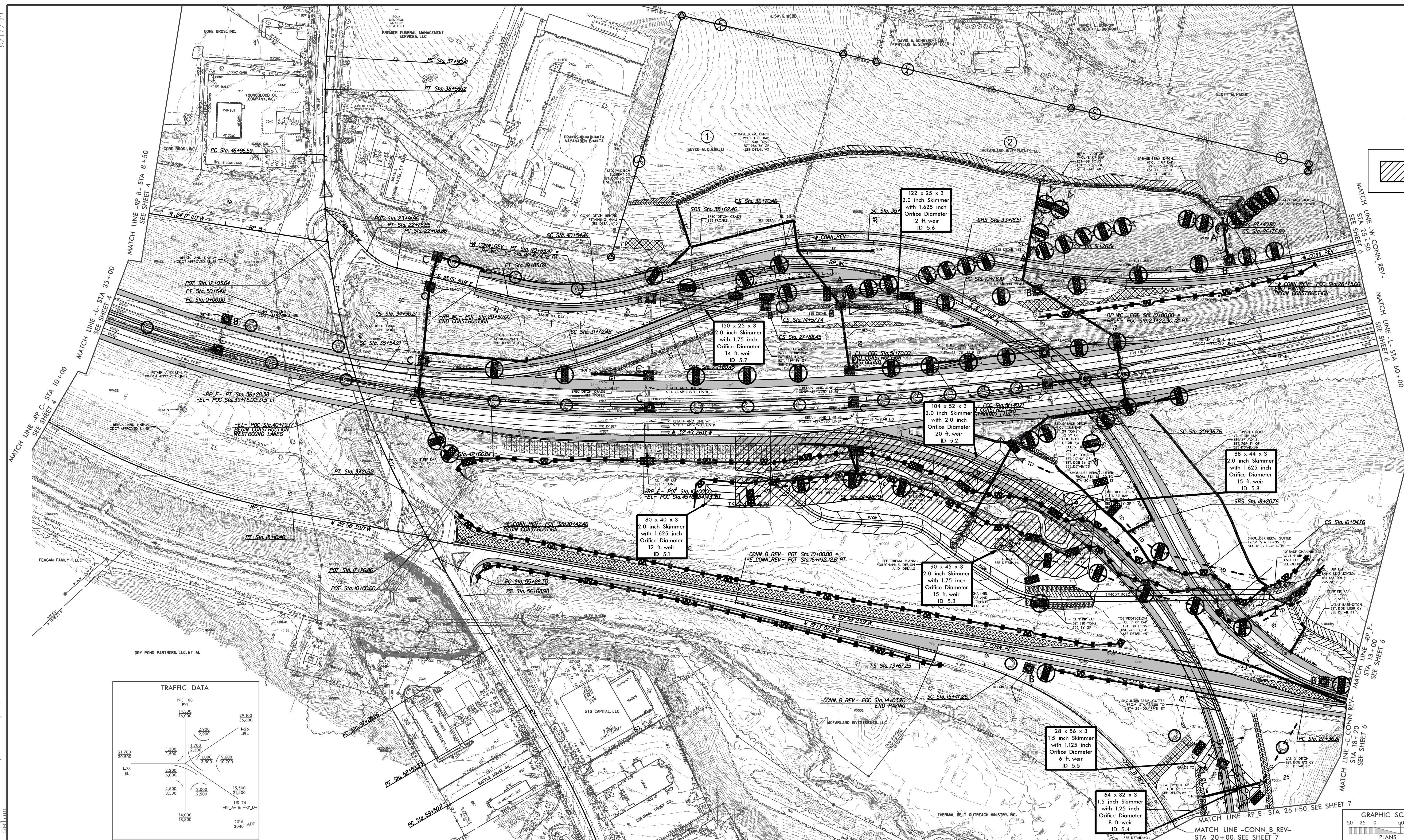
8/8/2017 9:41:54 AM EC\_dsn\_psh\_05.cgdgn

PROJECT REFERENCE NO.	SHEET NO.
1-4729A	EC-05/CONSTR 25
RDWY DESIGN ENGINEER	HYDRAULICS ENGINEER

CLEARING AND GRUBBING  
EROSION CONTROL FOR  
CONSTRUCTION SHEET 05

NOTE:  
PLACE TEMPORARY ROCK SEDIMENT DAMS TYPE - B  
AND TEMPORARY ROCK SILT CHECKS TYPE - A AT  
DRAINAGE OUTLETS.

 ENVIRONMENTALLY SENSITIVE AREA  
SEE PROJECT SPECIAL PROVISIONS



LOCATION: I-74 INTERCHANGE MODIFICATION BY THE TOWN OF COLUMBUS

TP NO. 1-4729A COUNTY: POLK

DESIGNED BY: J. MATTHEW PICKENS, PE

CHECKED BY: DAVID L. WELVE, PE DATE: