

SIGN ASSEMBLY

- (A)
- DETOUR M4-8
24" X 12"
 - EAST M3-4
24" X 12"
 - INTERSTATE 26 M1-1
24" X 24"
 - ↑ M6-3
21" X 15"

SIGN ASSEMBLY

- (B)
- DETOUR M4-8
24" X 12"
 - EAST M3-4
24" X 12"
 - INTERSTATE 26 M1-1
24" X 24"
 - ↗ M6-2R
21" X 15"

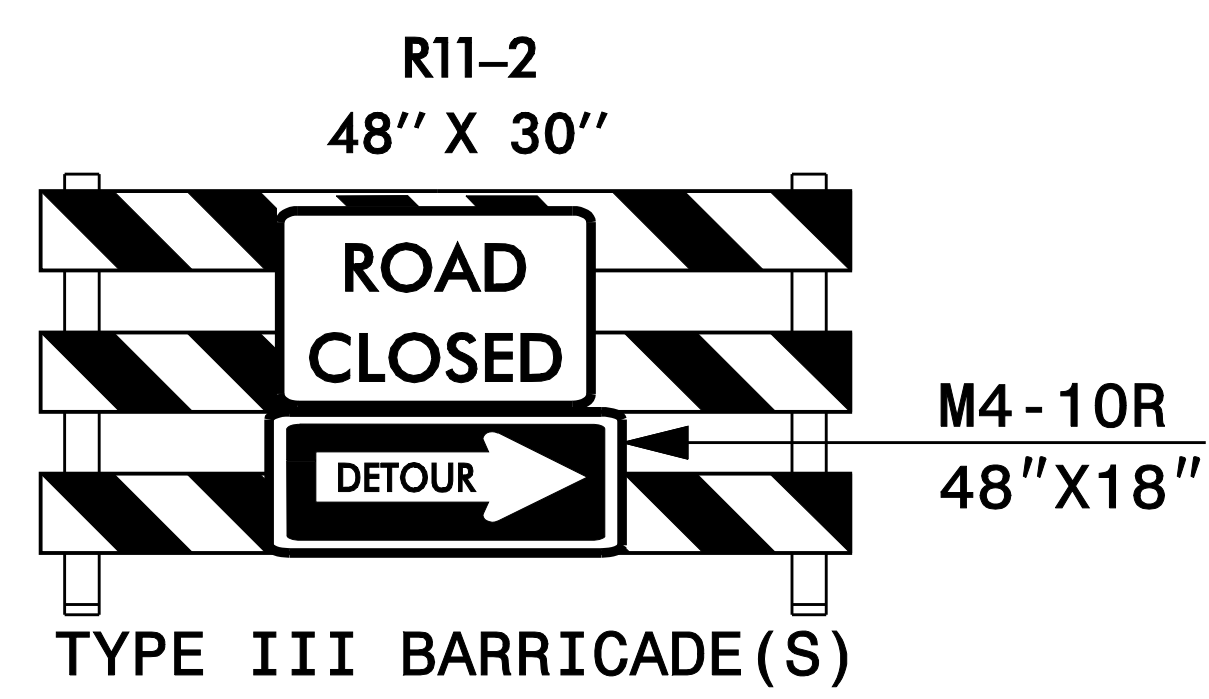
SIGN ASSEMBLY

- (C)
- DETOUR M4-8
24" X 12"
 - EAST M3-4
24" X 12"
 - INTERSTATE 26 M1-1
24" X 24"
 - ← M6-1 L
21" X 15"

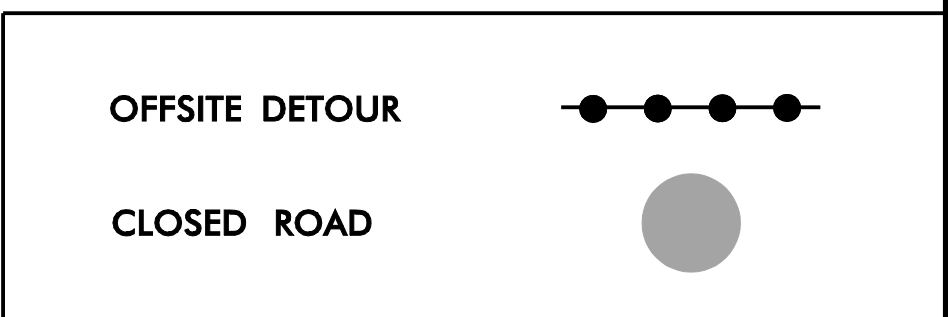
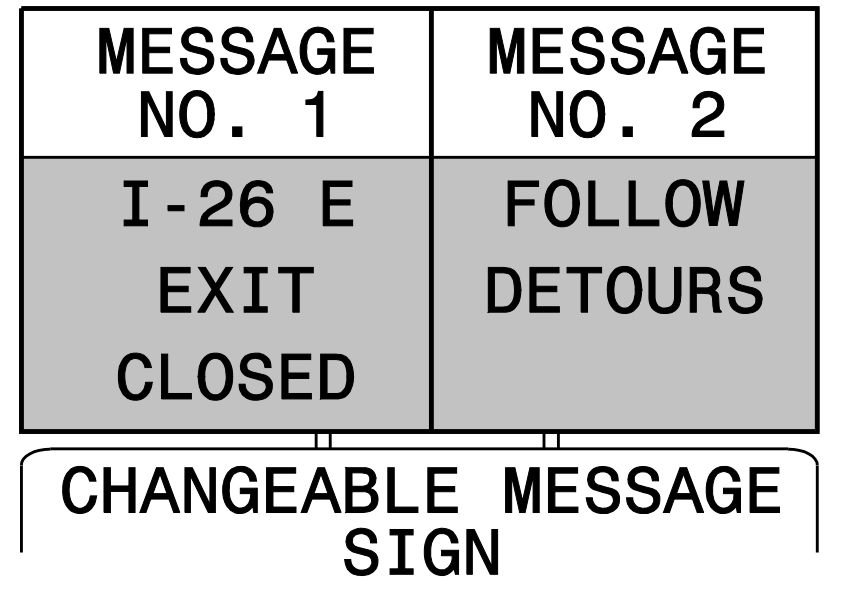
SIGN ASSEMBLY

- (D)
- END DETOUR M4-8A
24" X 18"

(E)



(F)



DOCUMENT NOT CONSIDERED FINAL UNLESS ALL SIGNATURES COMPLETED

PLAN PREPARED IN THE OFFICE OF:
PROGRESSIVE DESIGN GROUP, INC.
ENGINEERS • CONSULTANTS
PH 704 573 3003

APPROVED: *Tommy* DATE: 8/7/2017

SEAL

TEMPORARY TRAFFIC CONTROL
I-26/NC 108
OFFSITE DETOUR ROUTE
I-26 E RAMP