

SIGN ASSEMBLY

- (A)
- DETOUR M4-8  
24" X 12"
  - WEST M3-4  
24" X 12"
  - INTERSTATE 26 M1-1  
24" X 24"
  - UP ARROW M6-3  
21" X 15"

SIGN ASSEMBLY

- (B)
- DETOUR M4-8  
24" X 12"
  - WEST M3-4  
24" X 12"
  - INTERSTATE 26 M1-1  
24" X 24"
  - UP AND RIGHT ARROW M6-1 R  
21" X 15"

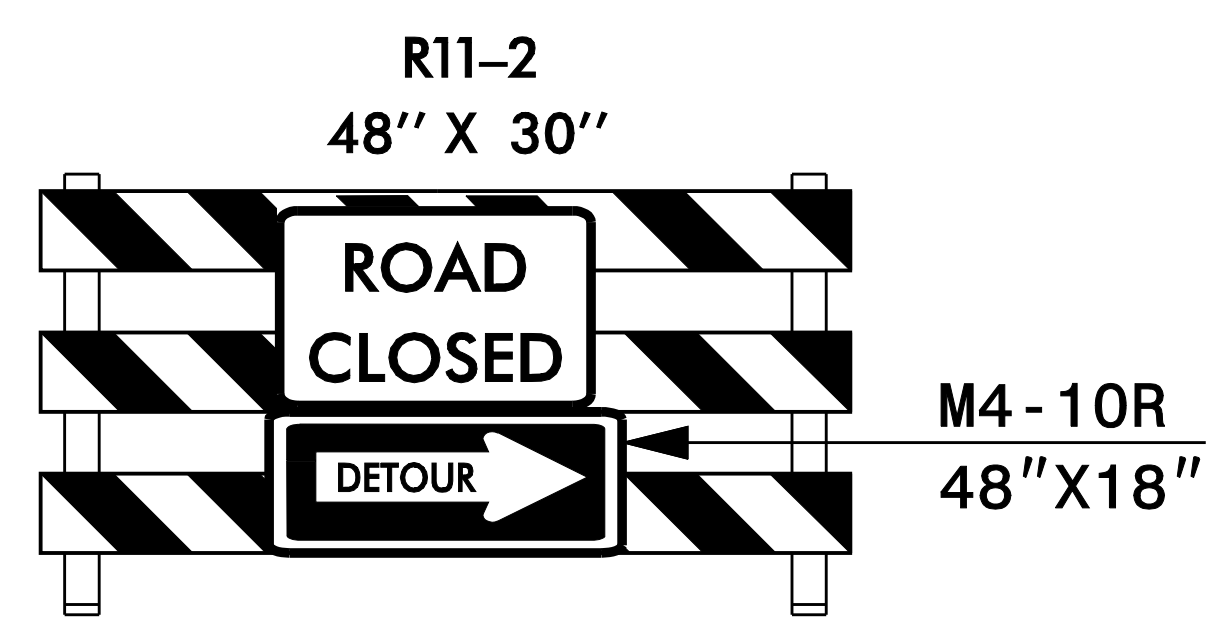
SIGN ASSEMBLY

- (C)
- DETOUR M4-8  
24" X 12"
  - WEST M3-4  
24" X 12"
  - INTERSTATE 26 M1-1  
24" X 24"
  - LEFT ARROW M6-1 L  
21" X 15"

SIGN ASSEMBLY

- (D)
- END DETOUR M4-8A  
24" X 18"

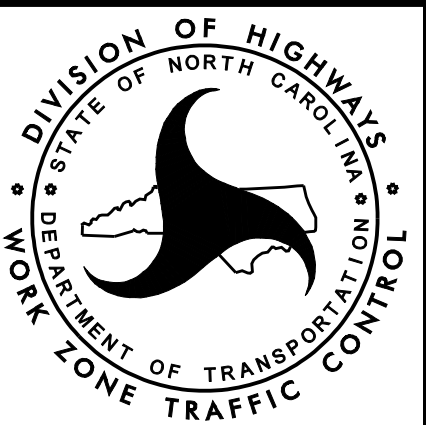
(E)



DOCUMENT NOT CONSIDERED FINAL  
UNLESS ALL SIGNATURES COMPLETED

PLAN PREPARED IN THE OFFICE OF:  
**PROGRESSIVE**  
DESIGN GROUP, INC.  
ENGINEERS • CONSULTANTS  
PH 704 573 3003

APPROVED: *Tommy* DATE: 8/7/2017  
SEAL  
NORTH CAROLINA PROFESSIONAL ENGINEER  
SEAL 025465  
M. ARE



TEMPORARY TRAFFIC CONTROL  
I-26/NC 108  
OFFSITE DETOUR ROUTE  
I-26 W RAMP