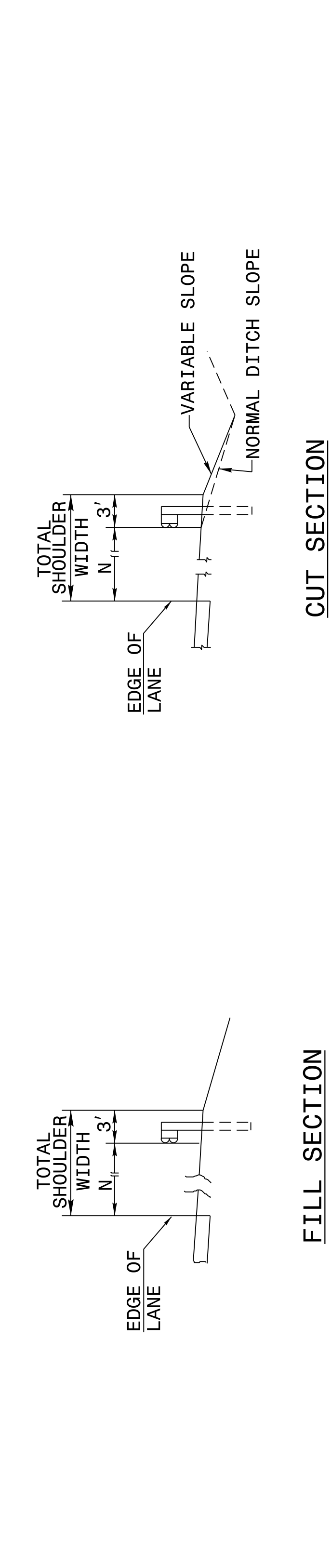
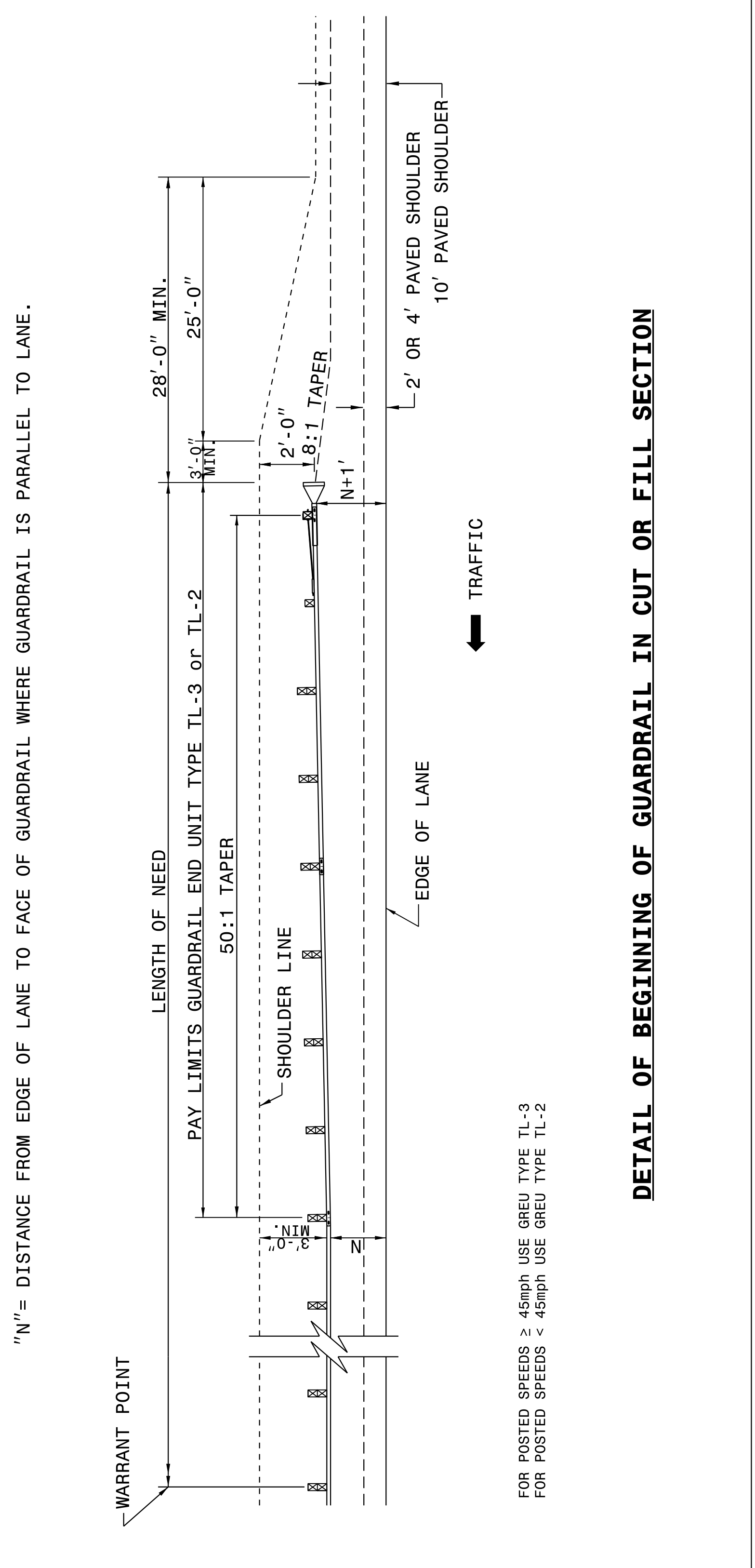


I:\JUL-2017 (24) S:\Contracts\Special Details\Howerton\Standard Drawings\2012 Standard Drawings\Division 8\662d01 862d03 862d01.dgn
 I:\JUL-2017 (24) S:\Contracts\Special Details\Howerton\Standard Drawings\2012 Standard Drawings\Division 8\662d01 862d03 862d01.dgn
 I:\JUL-2017 (24) S:\Contracts\Special Details\Howerton\Standard Drawings\2012 Standard Drawings\Division 8\662d01 862d03 862d01.dgn

STATE OF NORTH CAROLINA
DEPT. OF TRANSPORTATION
DIVISION OF HIGHWAYS
RALEIGH, N.C.

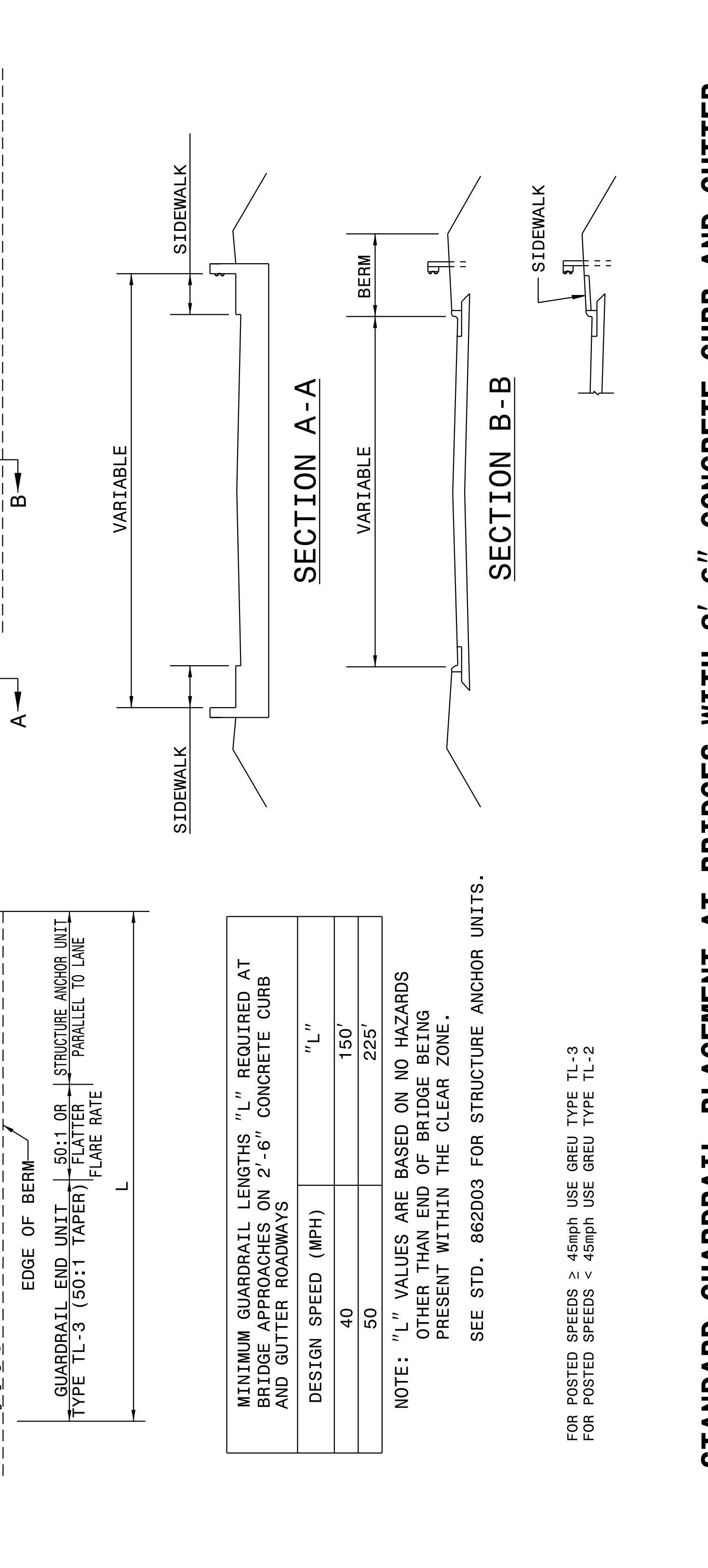


ROADWAY DETAIL DRAWING FOR
GUARDRAIL PLACEMENT

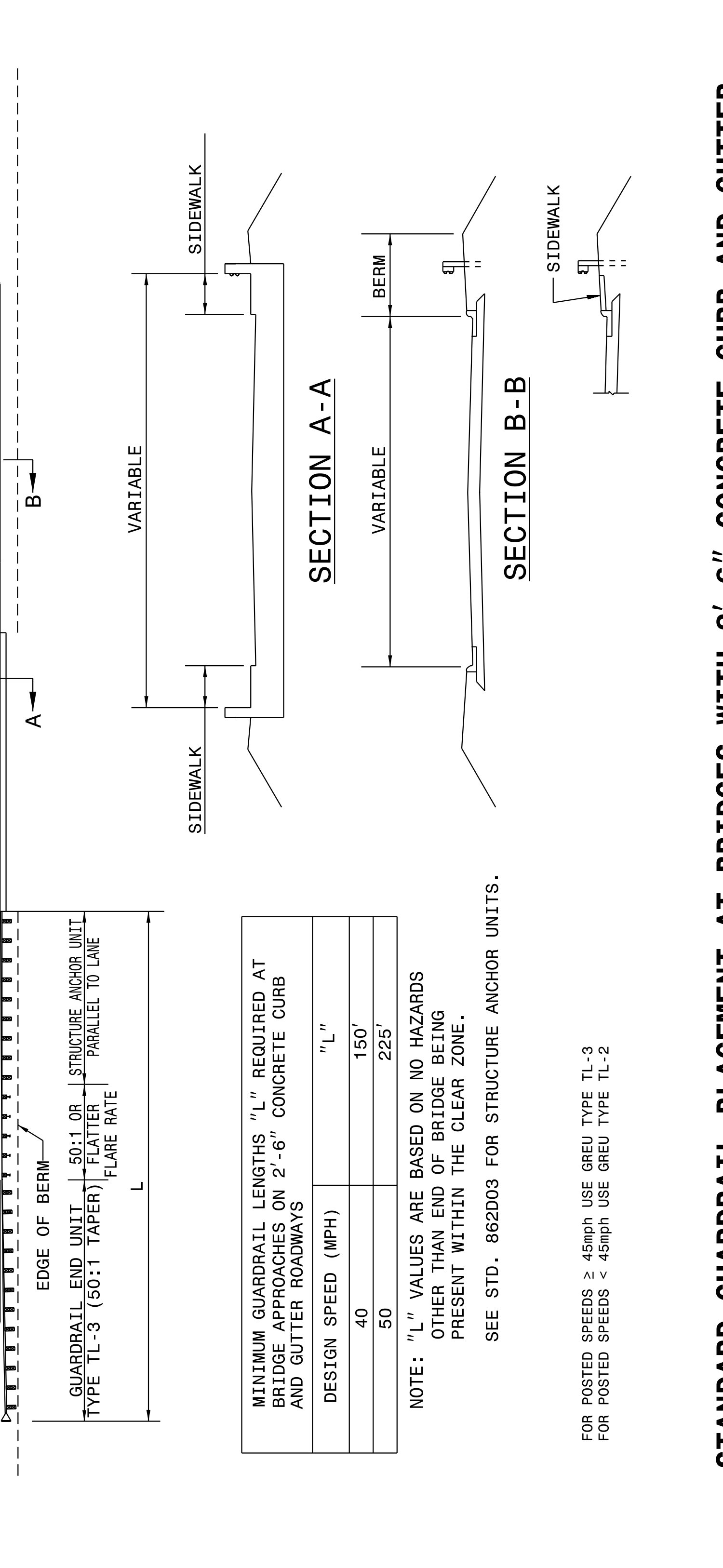
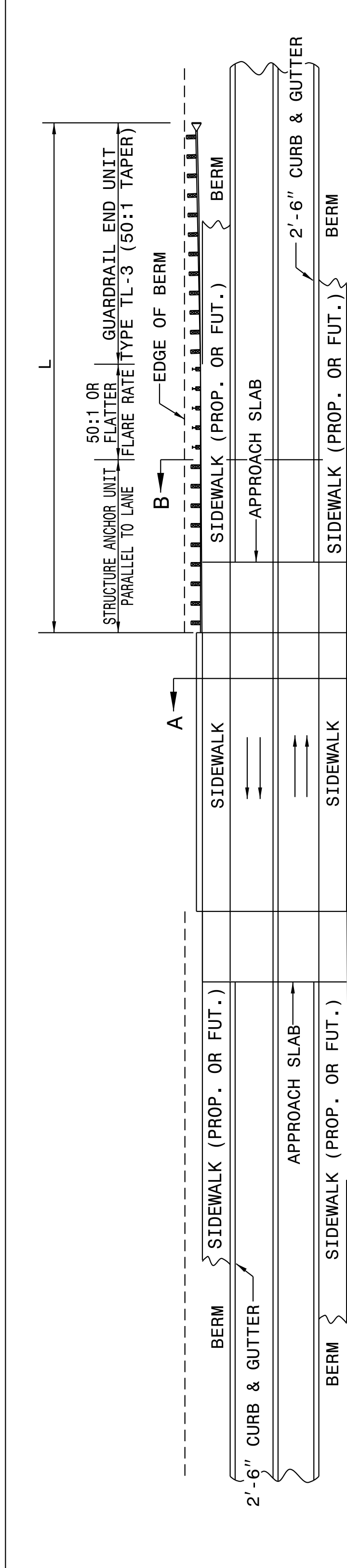


SHEET 6 OF 11
862D01

STATE OF NORTH CAROLINA
DEPT. OF TRANSPORTATION
DIVISION OF HIGHWAYS
RALEIGH, N.C.



SHEET 5 OF 11
862D01



ROADWAY DETAIL DRAWING FOR
GUARDRAIL PLACEMENT

STANDARD GUARDRAIL PLACEMENT AT BRIDGES WITH 2'-6" CONCRETE CURB AND GUTTER

DOCUMENT NOT CONSIDERED FINAL
UNLESS ALL SIGNATURES COMPLETED

**CONTRACT STANDARDS
AND DEVELOPMENT UNIT**
Office 919-707-6950 FAX 919-250-4119

SEE TITLE BLOCK

ORIGINAL BY: J. HOWERTON	DATE: 06-22-12
MODIFIED BY:	DATE:
CHECKED BY:	DATE:
FILE SPEC.:	