

REFERENCE: U-4751

PROJECT: 40191

STATE OF NORTH CAROLINA  
DEPARTMENT OF TRANSPORTATION  
DIVISION OF HIGHWAYS  
GEOTECHNICAL ENGINEERING UNIT

**STRUCTURE  
SUBSURFACE INVESTIGATION**

COUNTY NEW HANOVER  
PROJECT DESCRIPTION SR 1409 (MILITARY CUTOFF ROAD) TO US 17 IN WILMINGTON

SITE DESCRIPTION NOISE WALL 8 AT -L- STA. 93+00 LEFT

**CONTENTS**

<u>SHEET NO.</u>	<u>DESCRIPTION</u>
1	TITLE SHEET
2	LEGEND
3-3A	SITE PLANS
4	WALL ENVELOPE

APPENDIX I  
CPT LOGS SHEET I-5

STATE	STATE PROJECT REFERENCE NO.	SHEET NO.	TOTAL SHEETS
N.C.	U-4751	1	4

**CAUTION NOTICE**

THE SUBSURFACE INFORMATION AND THE SUBSURFACE INVESTIGATION ON WHICH IT IS BASED WERE MADE FOR THE PURPOSE OF STUDY, PLANNING AND DESIGN, AND NOT FOR CONSTRUCTION OR PAY PURPOSES. THE VARIOUS FIELD BORING LOGS, ROCK CORES AND SOIL TEST DATA AVAILABLE MAY BE REVIEWED OR INSPECTED IN RALEIGH BY CONTACTING THE N. C. DEPARTMENT OF TRANSPORTATION, GEOTECHNICAL ENGINEERING UNIT AT (919) 707-6850. THE SUBSURFACE PLANS AND REPORTS, FIELD BORING LOGS, ROCK CORES AND SOIL TEST DATA ARE NOT PART OF THE CONTRACT.

GENERAL SOIL AND ROCK STRATA DESCRIPTIONS AND INDICATED BOUNDARIES ARE BASED ON A GEOTECHNICAL INTERPRETATION OF ALL AVAILABLE SUBSURFACE DATA AND MAY NOT NECESSARILY REFLECT THE ACTUAL SUBSURFACE CONDITIONS BETWEEN BORINGS OR BETWEEN SAMPLED STRATA WITHIN THE BOREHOLE. THE LABORATORY SAMPLE DATA AND THE IN SITU (IN-PLACE) TEST DATA CAN BE RELIED ON ONLY TO THE DEGREE OF RELIABILITY INHERENT IN THE STANDARD TEST METHOD. THE OBSERVED WATER LEVELS OR SOIL MOISTURE CONDITIONS INDICATED IN THE SUBSURFACE INVESTIGATIONS ARE AS RECORDED AT THE TIME OF THE INVESTIGATION. THESE WATER LEVELS OR SOIL MOISTURE CONDITIONS MAY VARY CONSIDERABLY WITH TIME ACCORDING TO CLIMATIC CONDITIONS INCLUDING TEMPERATURES, PRECIPITATION AND WIND, AS WELL AS OTHER NON-CLIMATIC FACTORS.

THE BIDDER OR CONTRACTOR IS CAUTIONED THAT DETAILS SHOWN ON THE SUBSURFACE PLANS ARE PRELIMINARY ONLY AND IN MANY CASES THE FINAL DESIGN DETAILS ARE DIFFERENT. FOR BIDDING AND CONSTRUCTION PURPOSES, REFER TO THE CONSTRUCTION PLANS AND DOCUMENTS FOR FINAL DESIGN INFORMATION ON THIS PROJECT. THE DEPARTMENT DOES NOT WARRANT OR GUARANTEE THE SUFFICIENCY OR ACCURACY OF THE INVESTIGATION MADE, NOR THE INTERPRETATIONS MADE, OR OPINION OF THE DEPARTMENT AS TO THE TYPE OF MATERIALS AND CONDITIONS TO BE ENCOUNTERED. THE BIDDER OR CONTRACTOR IS CAUTIONED TO MAKE SUCH INDEPENDENT SUBSURFACE INVESTIGATIONS AS HE DEEMS NECESSARY TO SATISFY HIMSELF AS TO CONDITIONS TO BE ENCOUNTERED ON THE PROJECT. THE CONTRACTOR SHALL HAVE NO CLAIM FOR ADDITIONAL COMPENSATION OR FOR AN EXTENSION OF TIME FOR ANY REASON RESULTING FROM THE ACTUAL CONDITIONS ENCOUNTERED AT THE SITE DIFFERING FROM THOSE INDICATED IN THE SUBSURFACE INFORMATION.

- NOTES:
1. THE INFORMATION CONTAINED HEREIN IS NOT IMPLIED OR GUARANTEED BY THE N. C. DEPARTMENT OF TRANSPORTATION AS ACCURATE NOR IS IT CONSIDERED PART OF THE PLANS, SPECIFICATIONS OR CONTRACT FOR THE PROJECT.
  2. BY HAVING REQUESTED THIS INFORMATION, THE CONTRACTOR SPECIFICALLY WAIVES ANY CLAIMS FOR INCREASED COMPENSATION OR EXTENSION OF TIME BASED ON DIFFERENCES BETWEEN THE CONDITIONS INDICATED HEREIN AND THE ACTUAL CONDITIONS AT THE PROJECT SITE.

PERSONNEL

M. BAHIRADHAN  
J. WHITT  
S. BUCHANAN  
MIDATLANTIC DR.

INVESTIGATED BY M. BAHIRADHAN  
DRAWN BY S. BUCHANAN  
CHECKED BY M. BAHIRADHAN  
SUBMITTED BY SCHNABEL ENG.  
DATE APRIL 2015

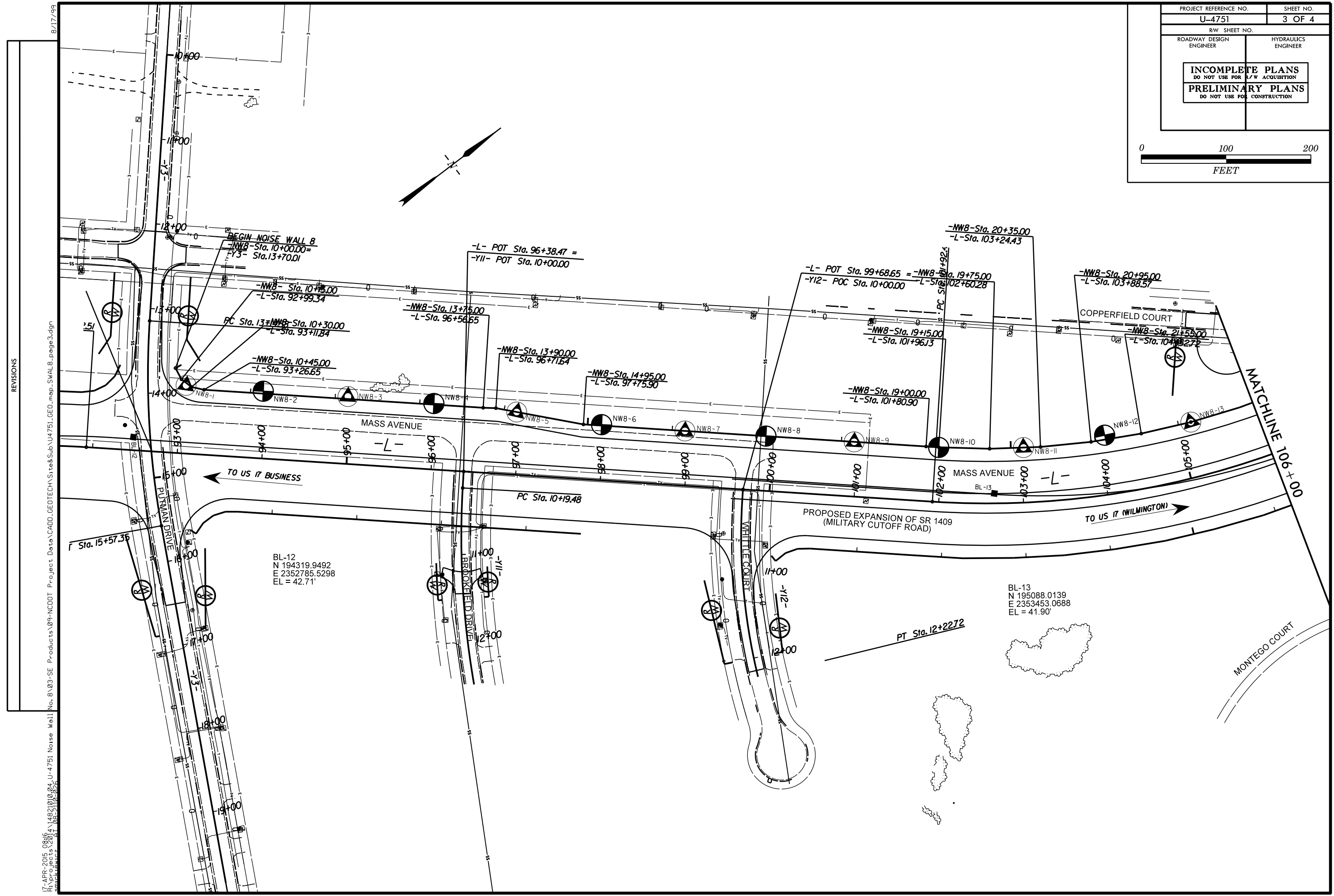
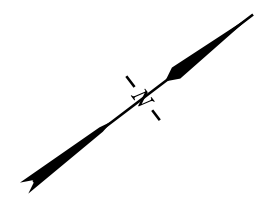
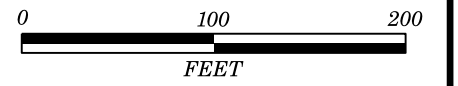


DocuSigned by:  
Mahalingam Bahiradhan 4/9/2015  
4DEAD3458192642RE DATE

NORTH CAROLINA DEPARTMENT OF TRANSPORTATION
DIVISION OF HIGHWAYS
GEOTECHNICAL ENGINEERING UNIT
SUBSURFACE INVESTIGATION
SOIL AND ROCK LEGEND, TERMS, SYMBOLS, AND ABBREVIATIONS

Table with multiple columns and rows containing technical specifications, legends, and definitions. Columns include SOIL DESCRIPTION, GRADATION, ROCK DESCRIPTION, TERMS AND DEFINITIONS, CONSISTENCY OR DENSENESS, TEXTURE OR GRAIN SIZE, SOIL MOISTURE - CORRELATION OF TERMS, PLASTICITY, COLOR, MISCELLANEOUS SYMBOLS, RECOMMENDATION SYMBOLS, ABBREVIATIONS, EQUIPMENT USED ON SUBJECT PROJECT, FRACTURE SPACING, BEDDING, INDURATION, and NOTES.

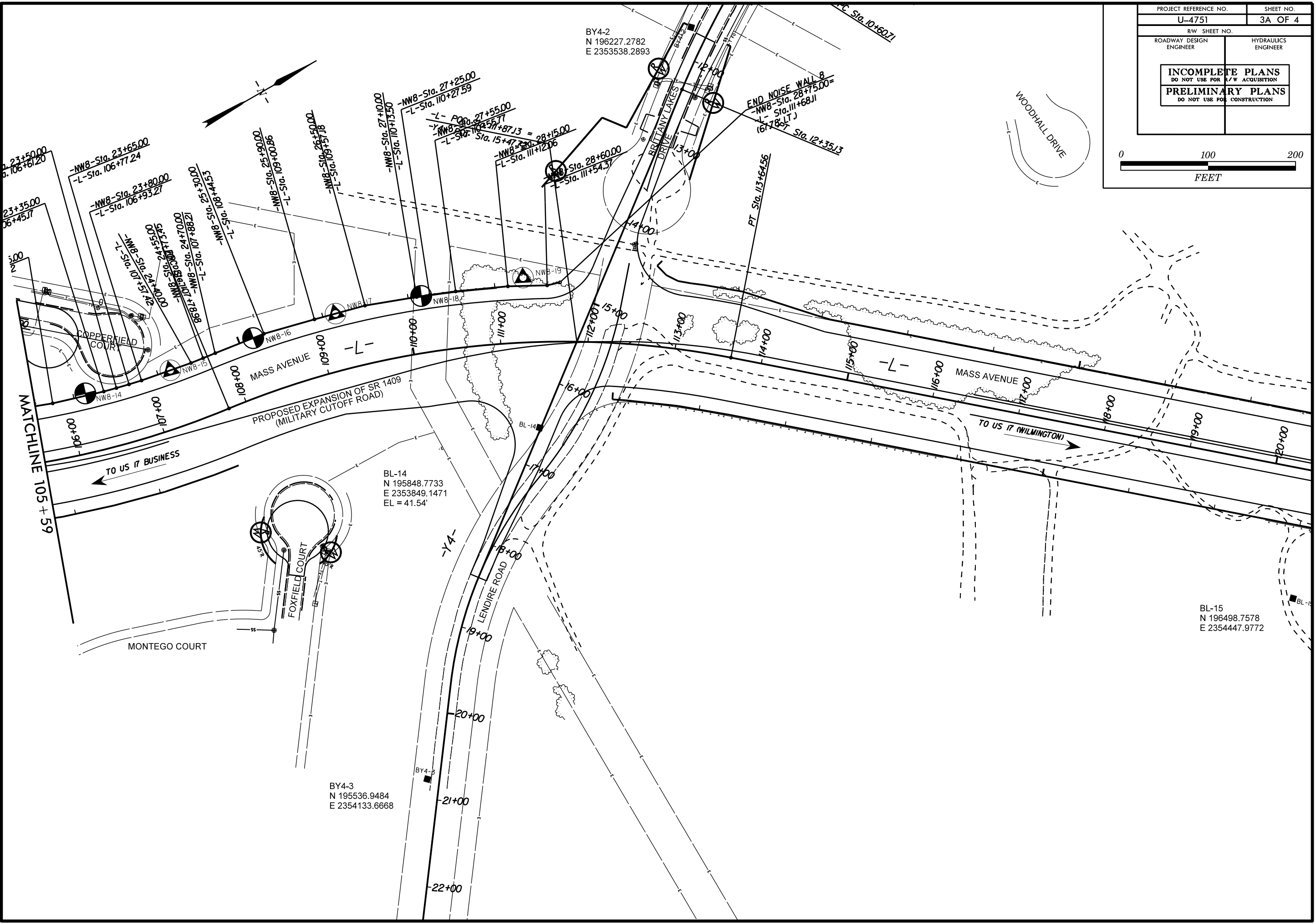
PROJECT REFERENCE NO.	SHEET NO.
U-4751	3 OF 4
RW SHEET NO.	
ROADWAY DESIGN ENGINEER	HYDRAULICS ENGINEER
<b>INCOMPLETE PLANS</b> DO NOT USE FOR A/W ACQUISITION <b>PRELIMINARY PLANS</b> DO NOT USE FOR CONSTRUCTION	



17-APR-2015 08:16  
 R:\projects\2014\1482\101004\_U-4751 Noise Wall\No. 8\03-SE Products\09-NCDDT Project Data\CADD\_GEO\TECH\_Site&Sub\U4751\_GEO\_map\_SWAL8\_page3.dgn  
 8/17/99  
 REVISIONS

8/17/99  
 17-APR-2015 08:18  
 R:\Projects\2014\1482\0104\_U-4751 Noise Wall\No. 8\03-SE Products\09-NCDDT Project Data\CADD\_GEDTECH\Sites&Sub\U4751\_GEO\_map\_SWAL8\_page 3A.dgn  
 REVISIONS

PROJECT REFERENCE NO. U-4751	SHEET NO. 3A OF 4
RW SHEET NO.	
ROADWAY DESIGN ENGINEER	HYDRAULICS ENGINEER
<b>INCOMPLETE PLANS</b> DO NOT USE FOR A/W ACQUISITION <b>PRELIMINARY PLANS</b> DO NOT USE FOR CONSTRUCTION	
 0 100 200 FEET	



BY4-2  
 N 196227.2782  
 E 2353538.2893

BL-14  
 N 195848.7733  
 E 2353849.1471  
 EL = 41.54'

BY4-3  
 N 195536.9484  
 E 2354133.6668

BL-15  
 N 196498.7578  
 E 2354447.9772

NW8-14  
 NW8-15  
 NW8-16  
 NW8-17  
 NW8-18  
 NW8-19

NW8-20  
 NW8-21  
 NW8-22  
 NW8-23  
 NW8-24  
 NW8-25  
 NW8-26  
 NW8-27  
 NW8-28

NW8-29  
 NW8-30  
 NW8-31  
 NW8-32  
 NW8-33  
 NW8-34  
 NW8-35  
 NW8-36  
 NW8-37  
 NW8-38  
 NW8-39  
 NW8-40

NW8-41  
 NW8-42  
 NW8-43  
 NW8-44  
 NW8-45  
 NW8-46  
 NW8-47  
 NW8-48  
 NW8-49  
 NW8-50

NW8-51  
 NW8-52  
 NW8-53  
 NW8-54  
 NW8-55  
 NW8-56  
 NW8-57  
 NW8-58  
 NW8-59  
 NW8-60

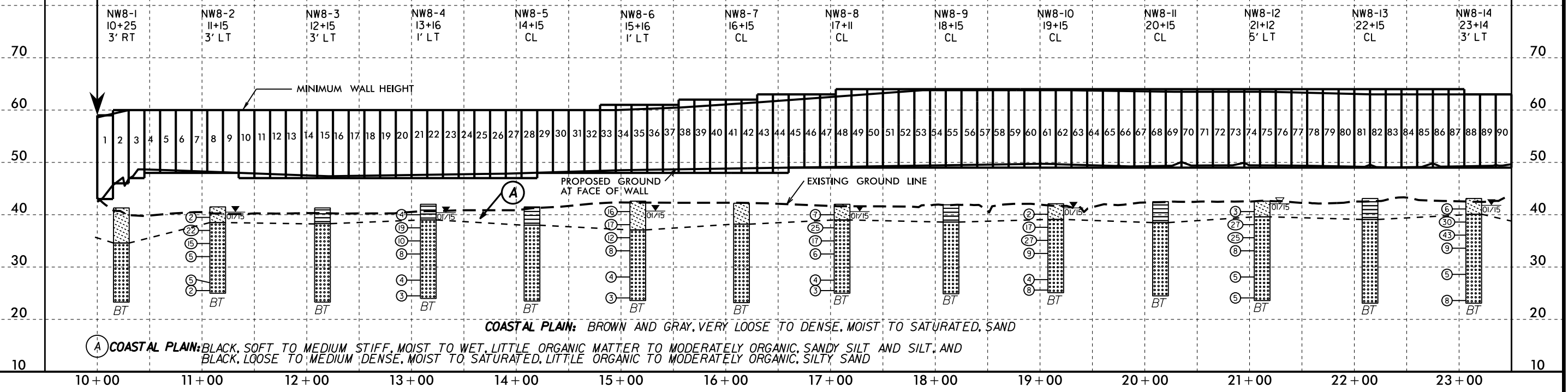
NW8-61  
 NW8-62  
 NW8-63  
 NW8-64  
 NW8-65  
 NW8-66  
 NW8-67  
 NW8-68  
 NW8-69  
 NW8-70

NW8-71  
 NW8-72  
 NW8-73  
 NW8-74  
 NW8-75  
 NW8-76  
 NW8-77  
 NW8-78  
 NW8-79  
 NW8-80

NW8-81  
 NW8-82  
 NW8-83  
 NW8-84  
 NW8-85  
 NW8-86  
 NW8-87  
 NW8-88  
 NW8-89  
 NW8-90

NW8-91  
 NW8-92  
 NW8-93  
 NW8-94  
 NW8-95  
 NW8-96  
 NW8-97  
 NW8-98  
 NW8-99  
 NW8-100

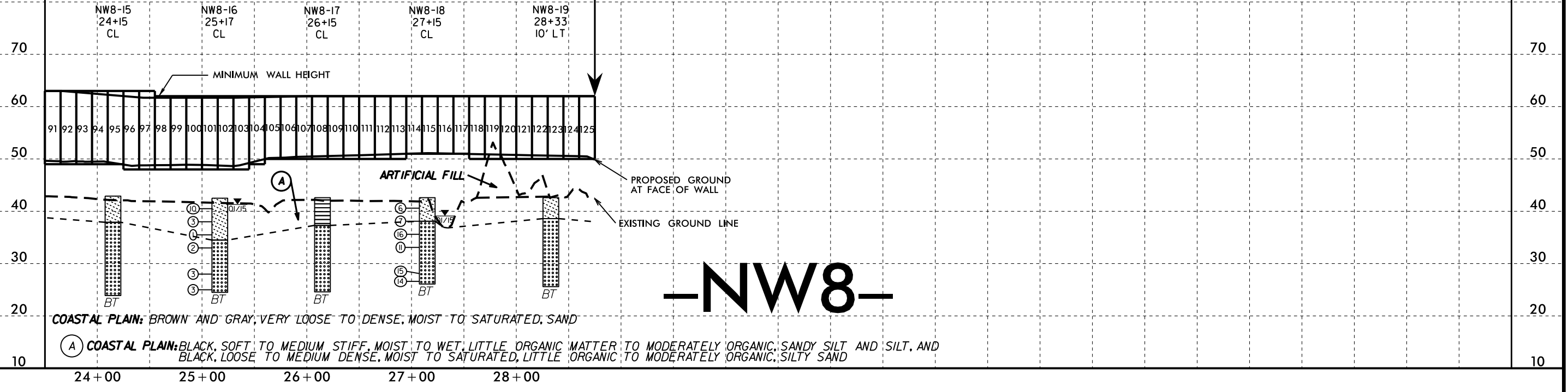
BEGIN NOISE WALL-8  
 -NW8- STA. 10+00.00  
 -L- STA. 92+91.45 (99.91' LT)



**(A) COASTAL PLAIN:** BLACK, SOFT TO MEDIUM STIFF, MOIST TO WET, LITTLE ORGANIC MATTER TO MODERATELY ORGANIC, SANDY SILT AND SILT, AND BLACK, LOOSE TO MEDIUM DENSE, MOIST TO SATURATED, LITTLE ORGANIC TO MODERATELY ORGANIC, SILTY SAND

**COASTAL PLAIN:** BROWN AND GRAY, VERY LOOSE TO DENSE, MOIST TO SATURATED, SAND

END NOISE WALL-8  
 -NW-8 STA. 28+75.00  
 -L- STA. 111+68.11 (67.78' LT)



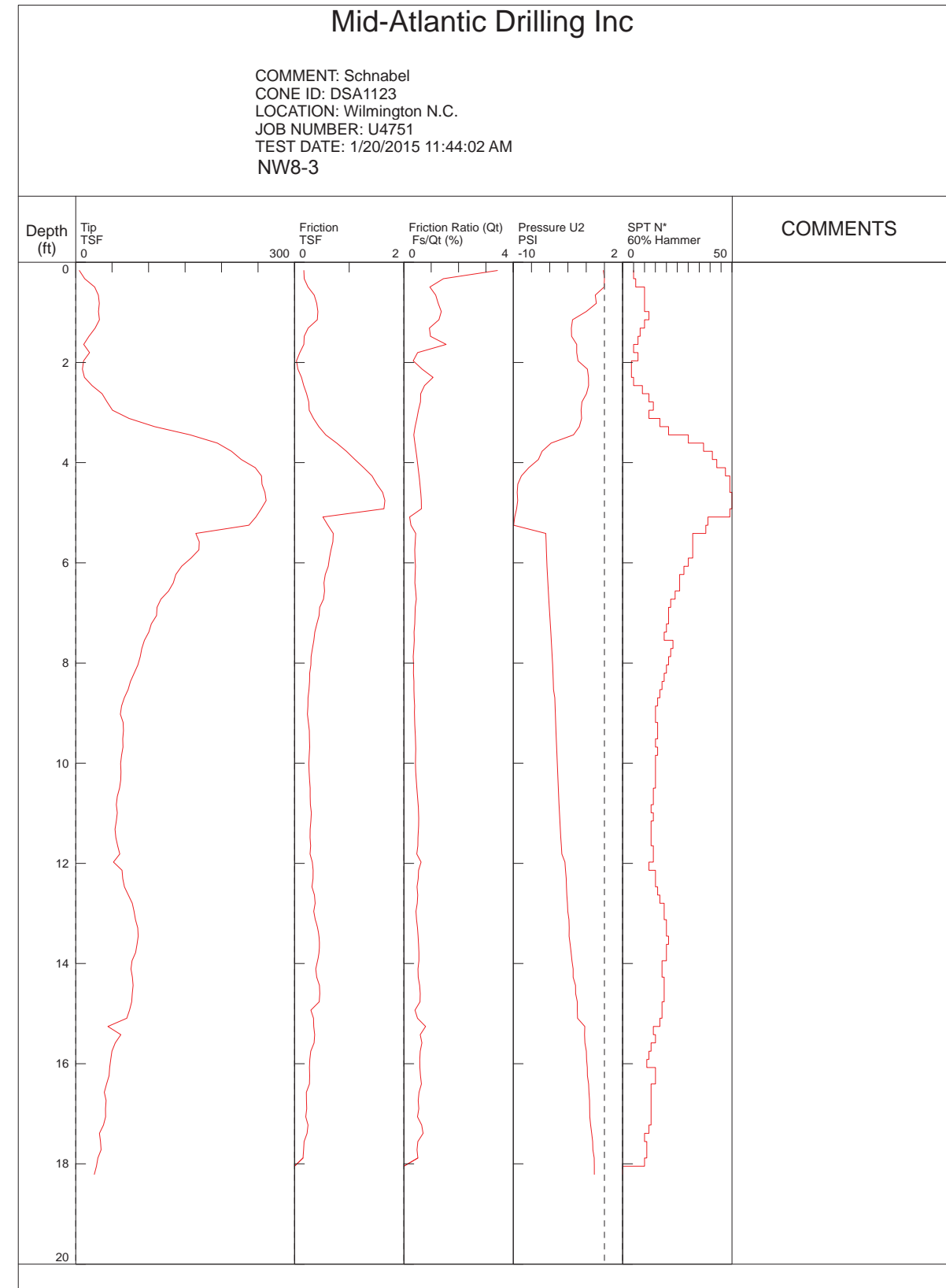
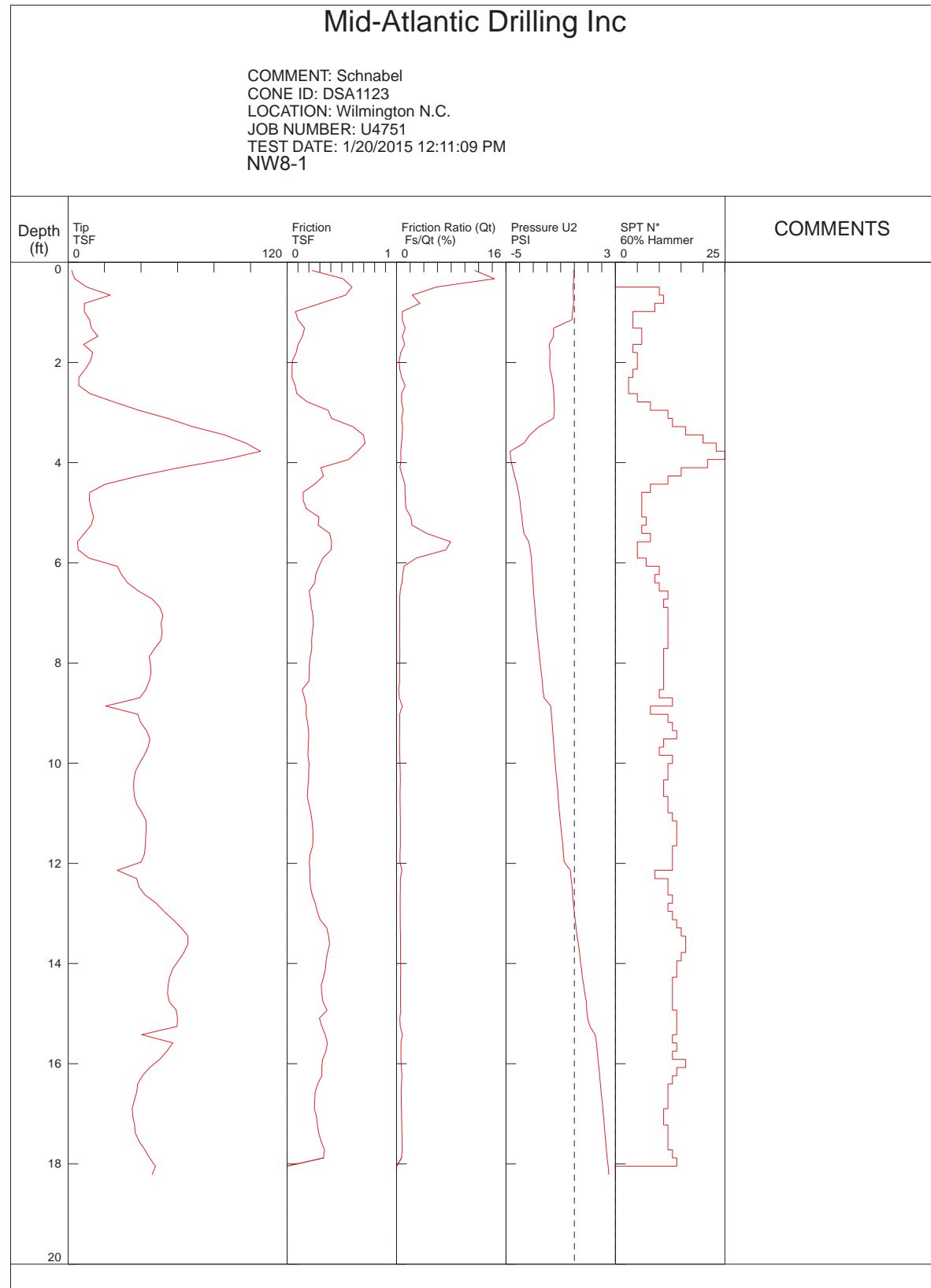
**(A) COASTAL PLAIN:** BLACK, SOFT TO MEDIUM STIFF, MOIST TO WET, LITTLE ORGANIC MATTER TO MODERATELY ORGANIC, SANDY SILT AND SILT, AND BLACK, LOOSE TO MEDIUM DENSE, MOIST TO SATURATED, LITTLE ORGANIC TO MODERATELY ORGANIC, SILTY SAND

**COASTAL PLAIN:** BROWN AND GRAY, VERY LOOSE TO DENSE, MOIST TO SATURATED, SAND

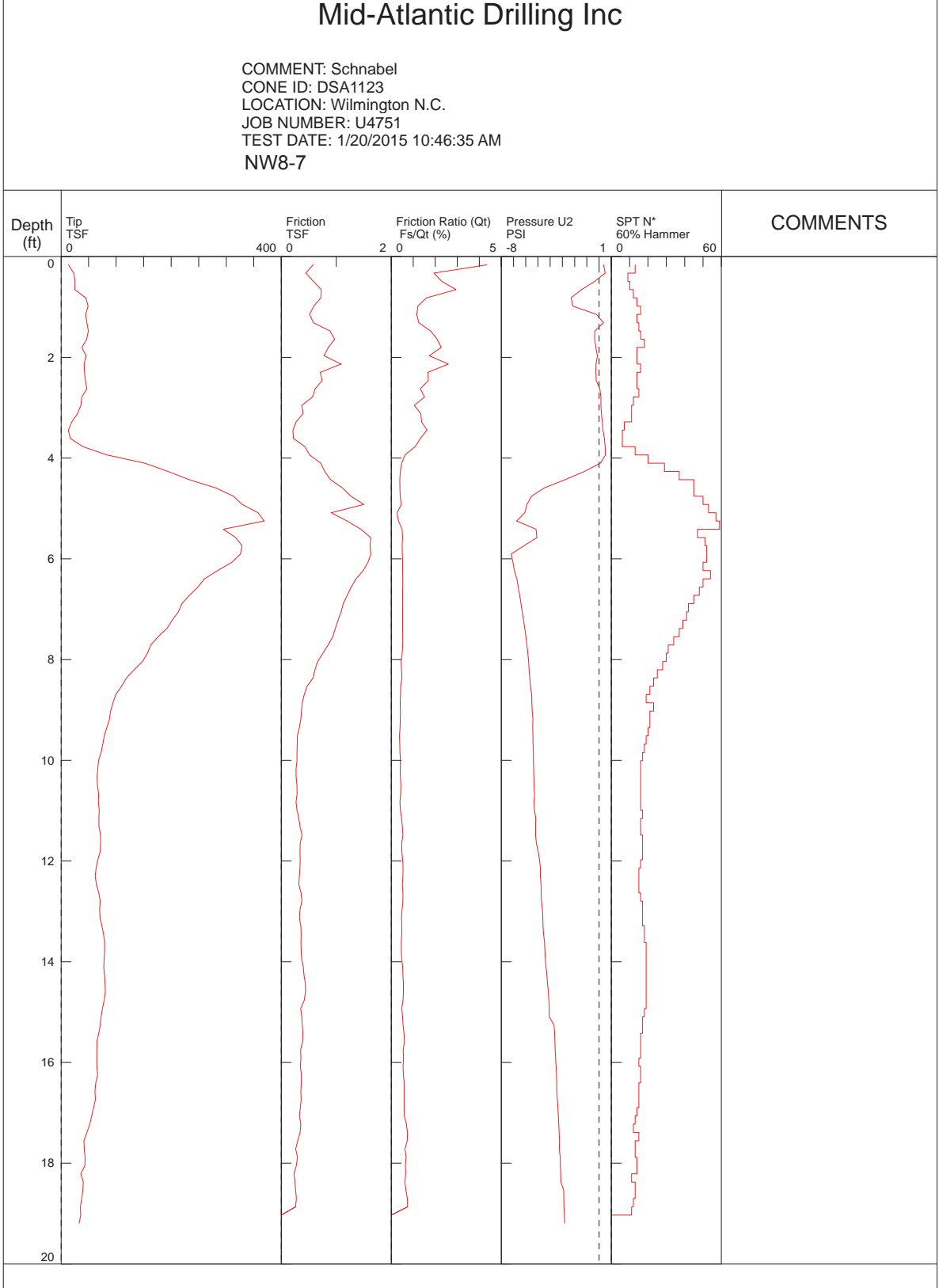
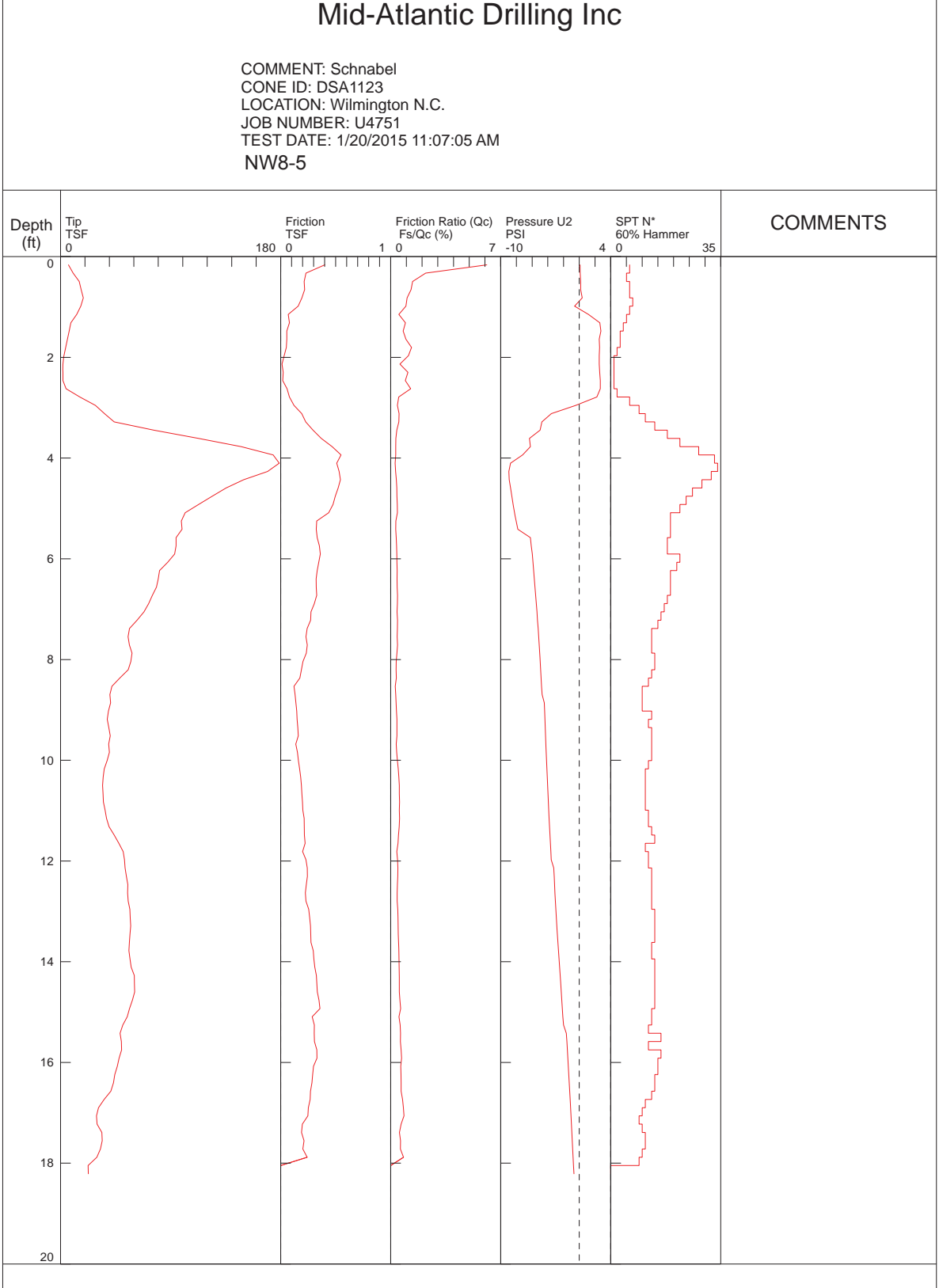
**-NW8-**

5/28/99  
 21-APR-2015 14:35  
 R:\Projects\2014\148210104\_U-4751 Noise Wall No. 8\03-SE Products\09-NCDDT Project Data\CADD\_GEDTECH\Plan\Prof\U4751\_GED\_pf\_SWALB.dgn

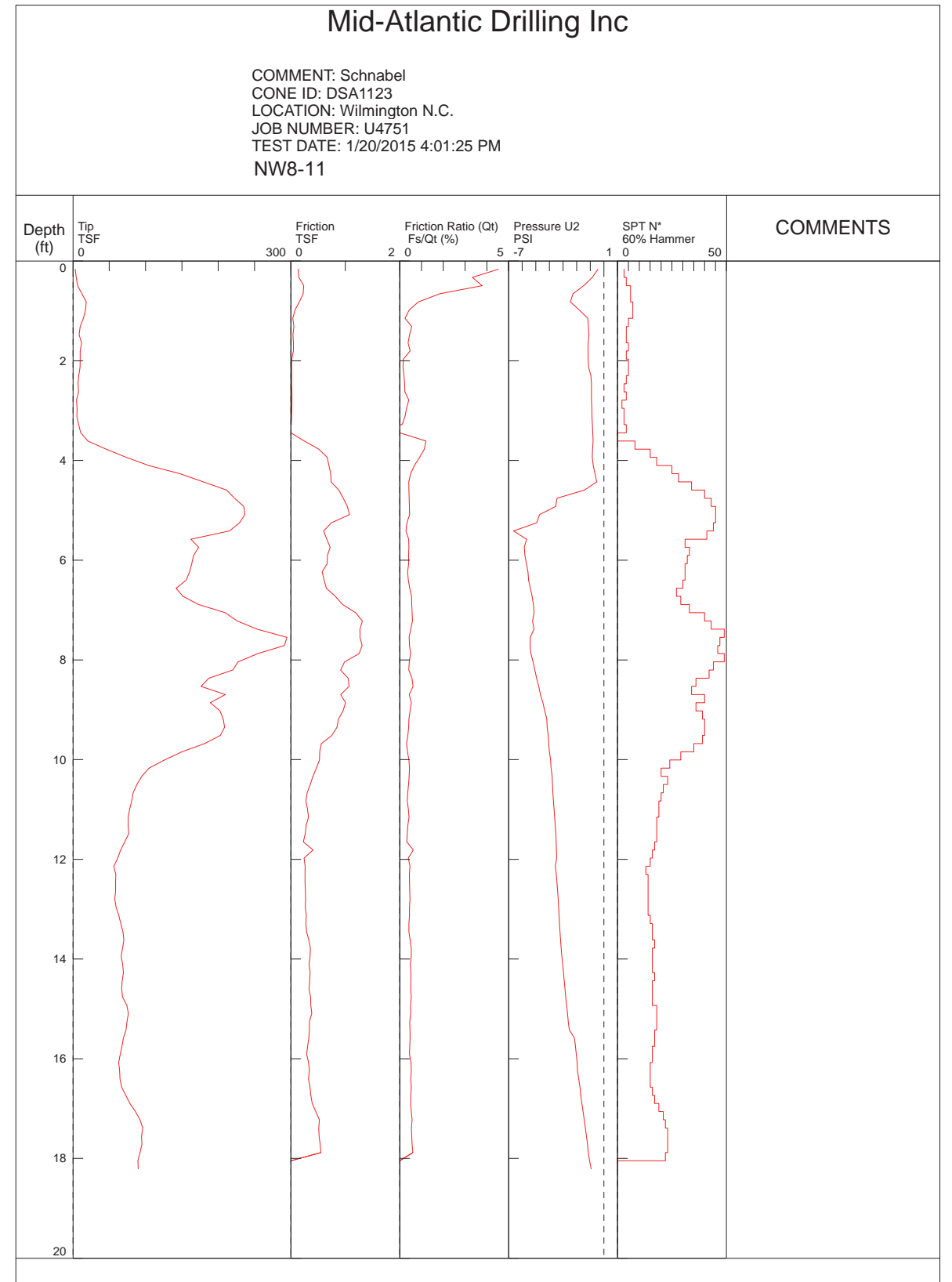
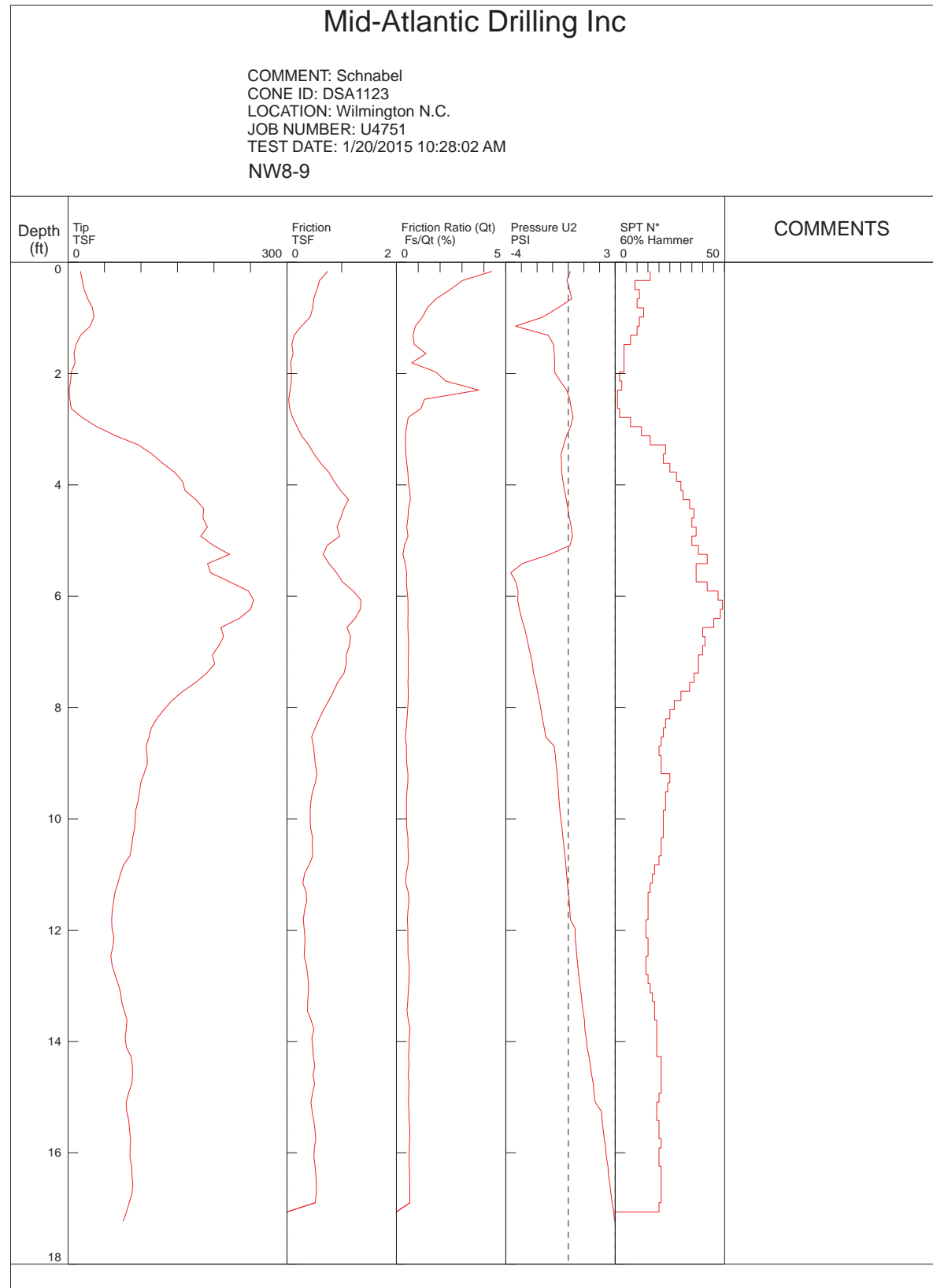
APPENDIX I



APPENDIX I

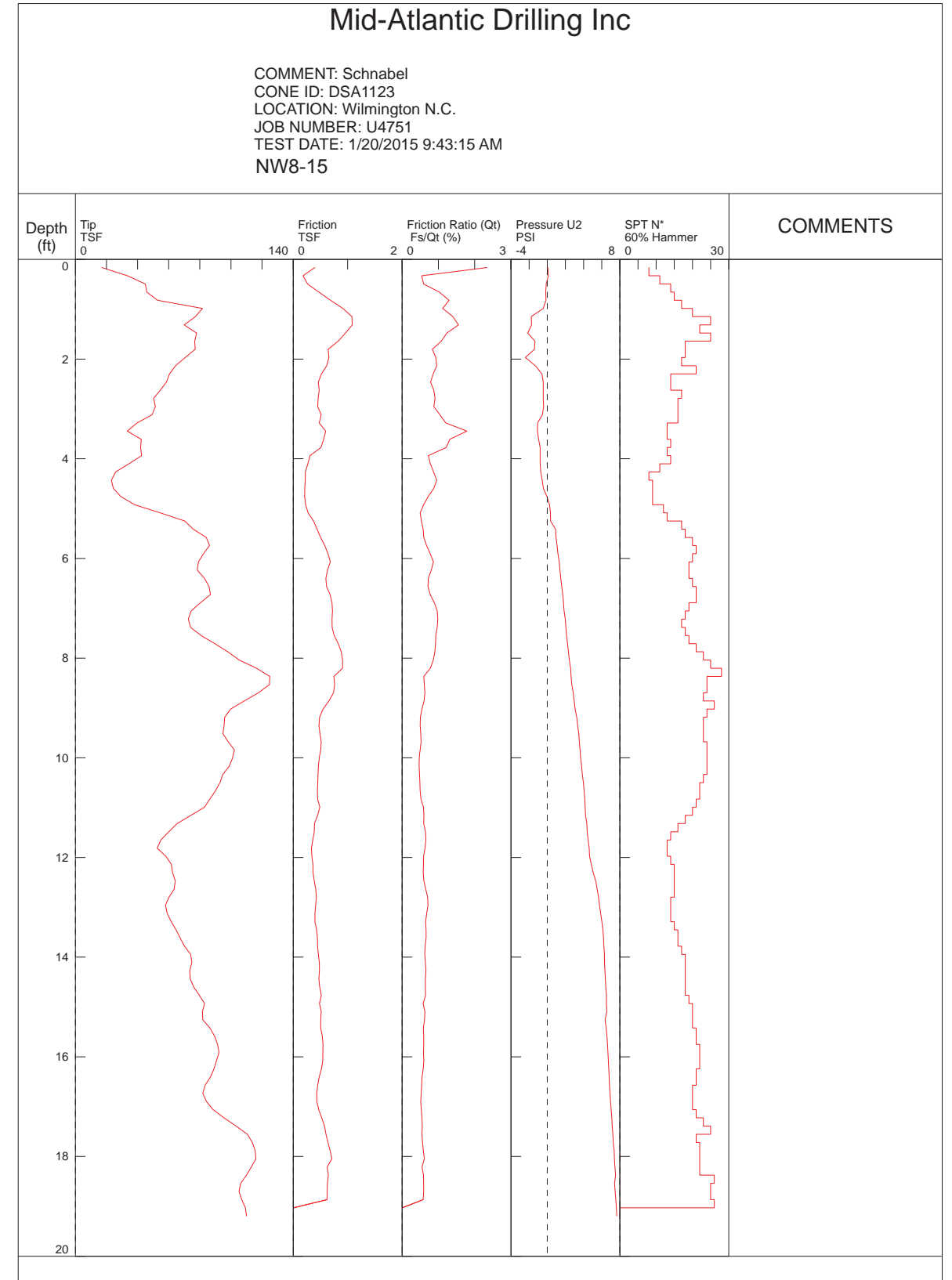
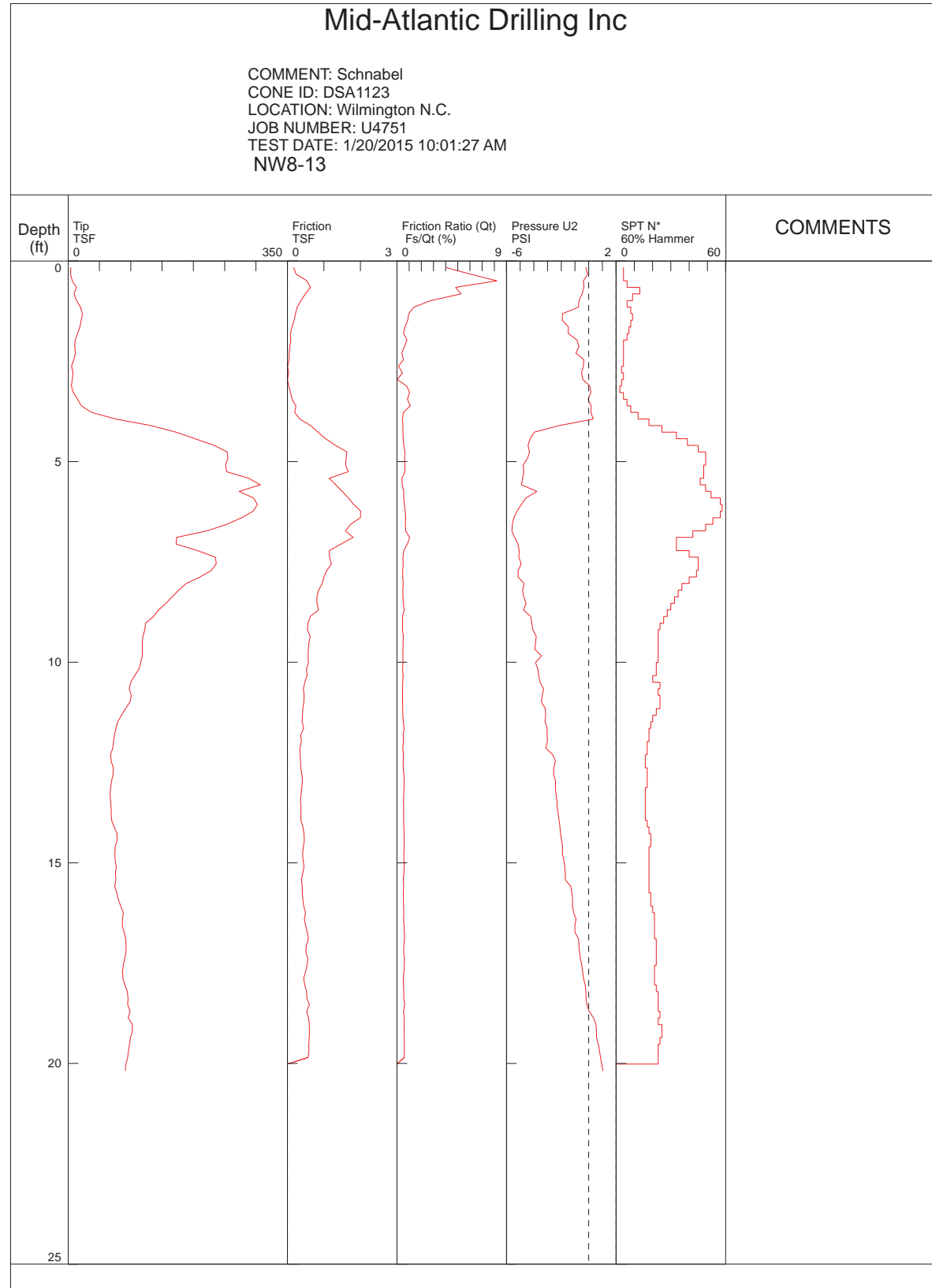


APPENDIX I





APPENDIX I



APPENDIX I

