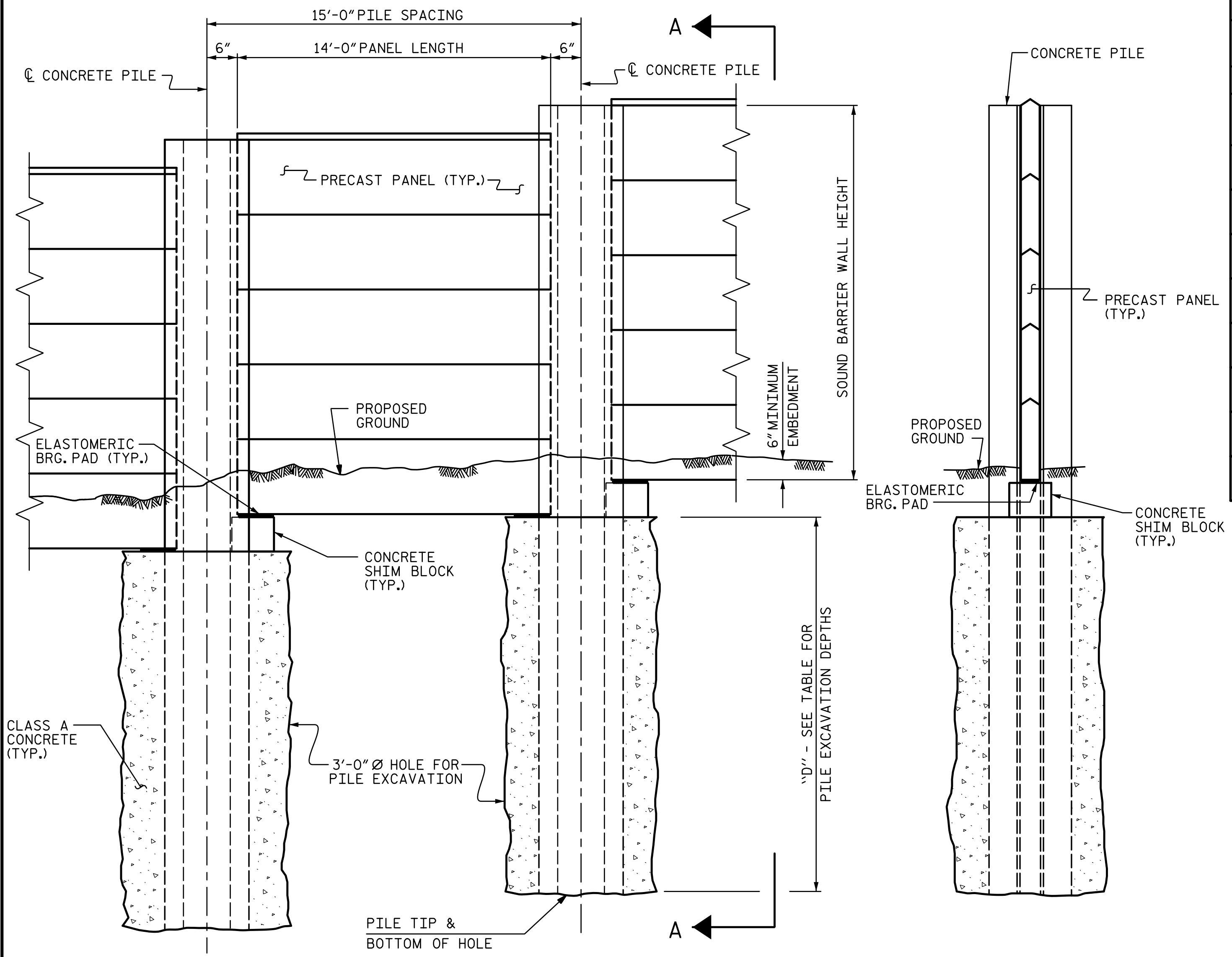


R:\No\seawalls\NW 13\420\_001\_U4751\_SML\_NW\_001\_640013.dgn 3:03:41 PM 8/17/2017 ch11kmb



PILE EXCAVATION DEPTHS "D"			
3'-0" Ø HOLE			
WALL -NW13- (STA. 10+00 TO 38+83 -NW13-)			
STATION	MAX WALL HEIGHT	PILE SPACING	SHAFT DEPTH
STA. 128+33.75 -L- TO STA. 128+48.67 -L-	17'-0"	15'-0"	16'-6"
STA. 128+62.49 -L-	15'-0"	15'-0"	14'-6"
▲ STA. 128+77.49 -L- TO STA. 135+62.14 -L-	17'-0"	15'-0"	13'-0"
▲ STA. 135+77.52 -L- TO STA. 138+54.36 -L-	16'-0"	15'-0"	13'-6"
△ STA. 138+69.74 -L- TO STA. 138+95.37 -L-	16'-0"	25'-0"	17'-0"
STA. 139+10.75 -L- TO STA. 151+62.26 -L-	16'-0"	15'-0"	13'-6"
△ STA. 151+77.64 -L- TO STA. 152+16.61 -L-	16'-0"	38'-0"	20'-0"
STA. 152+31.99 -L- TO STA. 157+54.98 -L-	16'-0"	15'-0"	13'-6"

△ FOR ELEVATION VIEW AND DETAILS FOR 25' AND 38' PILE SPACINGS, SEE SHEETS 2 AND 3 OF 3.  
 △ FOR STEEL PILES, SUPPORT BEAM, ANGLES, AND LAGGING STOP NOTES, SEE "SOUND BARRIER WALL DETAILS" SHEET 3 OF 3.

**NOTES:**  
 FOR SOUND BARRIER WALL, SEE SPECIAL PROVISIONS.  
 CONSTRUCT SOUND BARRIER WALL TO LINES AND GRADES SHOWN ON THE ROADWAY PLANS.  
 PROVIDE PANELS WITH A FLAT BOTTOM.  
 VERIFY THE LOCATION OF UNDERGROUND UTILITIES BEFORE DRILLING HOLES TO ENSURE SUFFICIENT CLEARANCE IS AVAILABLE.  
 ADJUST PILE EXCAVATION ELEVATIONS TO MAINTAIN 6" MINIMUM EMBEDMENT OF THE BOTTOM PANEL.  
 USE CLASS AA FOR PANELS AND CLASS A CONCRETE PILE EXCAVATION BACKFILL, IN ACCORDANCE WITH ARTICLE 1000-4 OF THE STANDARD SPECIFICATIONS.  
 FOR SOUND BARRIER WALL STATIONS, OFFSETS, AND WALL ENVELOPE, SEE ROADWAY PLANS.  
 PLACE 1" Ø BACKER RODS FULL HEIGHT ON EACH SIDE OF THE PRECAST PANELS. SET AND SEAL THE BACKER ROD IN PLACE WITH SEALANT THAT CONFORMS WITH ARTICLE 1028-3 OF THE STANDARD SPECIFICATIONS.  
 FOR SUBMITTAL OF WORKING DRAWINGS, SEE SPECIAL PROVISIONS.  
 FOR FALSEWORK AND FORMWORK, SEE SPECIAL PROVISIONS.  
 FOR ELASTOMERIC BEARING DETAILS, SEE "SOUND BARRIER WALL DETAILS" SHEET 1 OF 3.  
 FOR CONCRETE SHIM BLOCK DETAILS, SEE "SOUND BARRIER WALL DETAILS" SHEET 1 OF 3.  
 FOR PRECAST PANEL DETAILS, SEE "SOUND BARRIER WALL DETAILS" SHEET 1 & 3 OF 3.  
 FOR CONCRETE PILE DETAILS, SEE "SOUND BARRIER WALL DETAILS" SHEETS 1 & 2 OF 3.  
 AT THE CONTRACTOR'S OPTION, USE CONTINUOUS FLIGHT AUGER PILES IN LIEU OF PILE EXCAVATION FOR SOUND BARRIER WALL FOUNDATION. SEE "CONTINUOUS FLIGHT AUGER PILES FOR SOUND BARRIER WALLS" SPECIAL PROVISION.  
 NOTE THAT SOUND BARRIER WALL PILES LOCATED WITHIN THE MSE WALL BACKFILL MUST BE INSTALLED PRIOR TO MSE WALL CONSTRUCTION. THE DEPTHS ARE MEASURED FROM THE BOTTOM OF THE MSE WALL REINFORCED ZONE ASSUMING 2 FEET OF WALL EMBEDMENT AND BASED ON THE DIMENSION SHOWN IN THE ROADWAY CROSS SECTIONS.  
 THE ARCHITECTURAL CONCRETE SURFACE TREATMENT SHALL MATCH THE APPEARANCE (STONE SIZE AND SHAPE, STONE TEXTURE, PATTERN AND RELIEF) OF NATURAL STONE TO RESEMBLE A DRY STACKED STONE PATTERN WITH FEDERAL STANDARD 595 COLOR \* FS30450 STAIN.

**EXPOSURE CATEGORY D - PILE REINFORCING STEEL**  
 DESIGN WIND PRESSURE = 62 PSF (0' < H ≤ 14'); 71 PSF (14' < H ≤ 25')

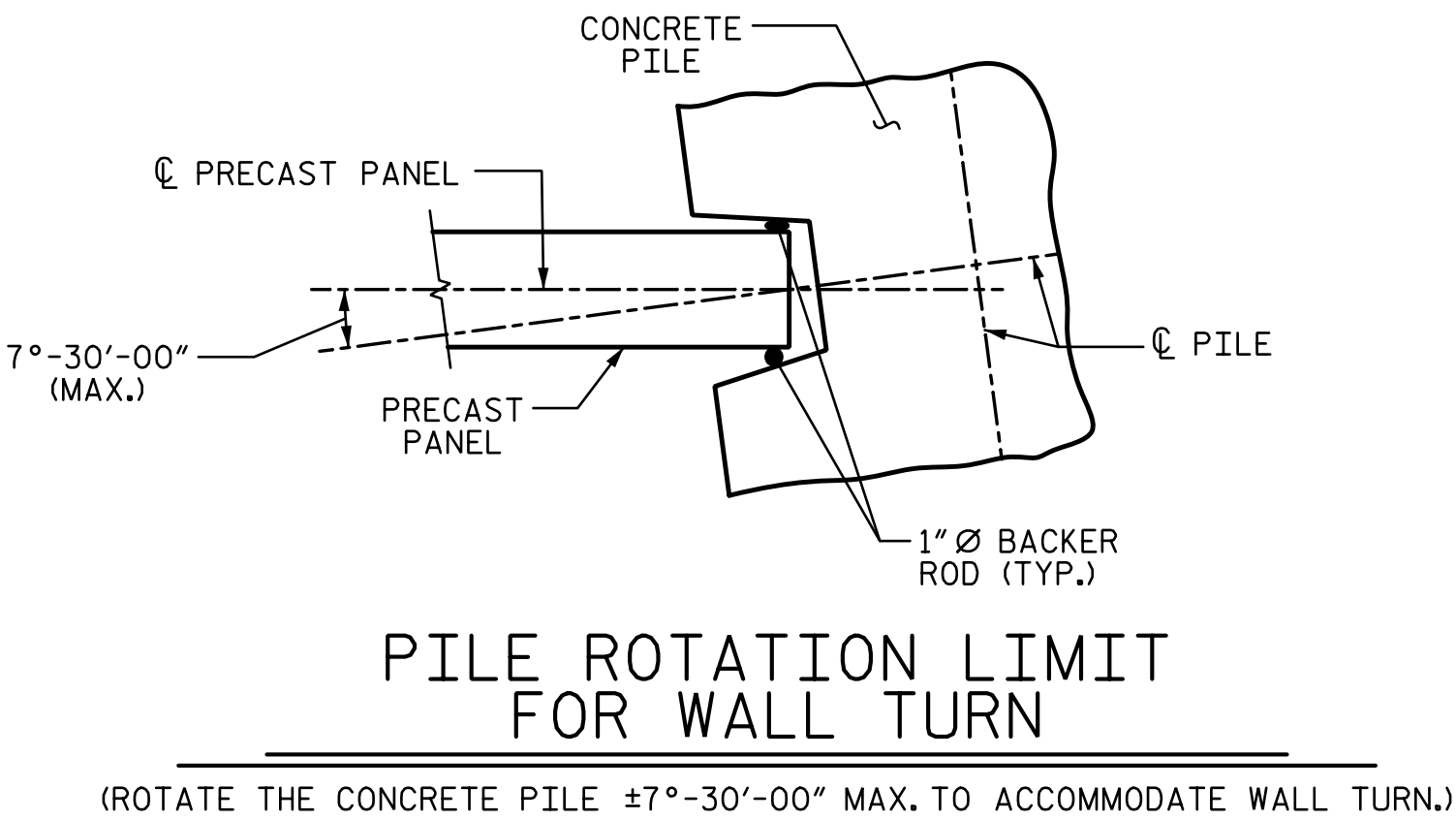
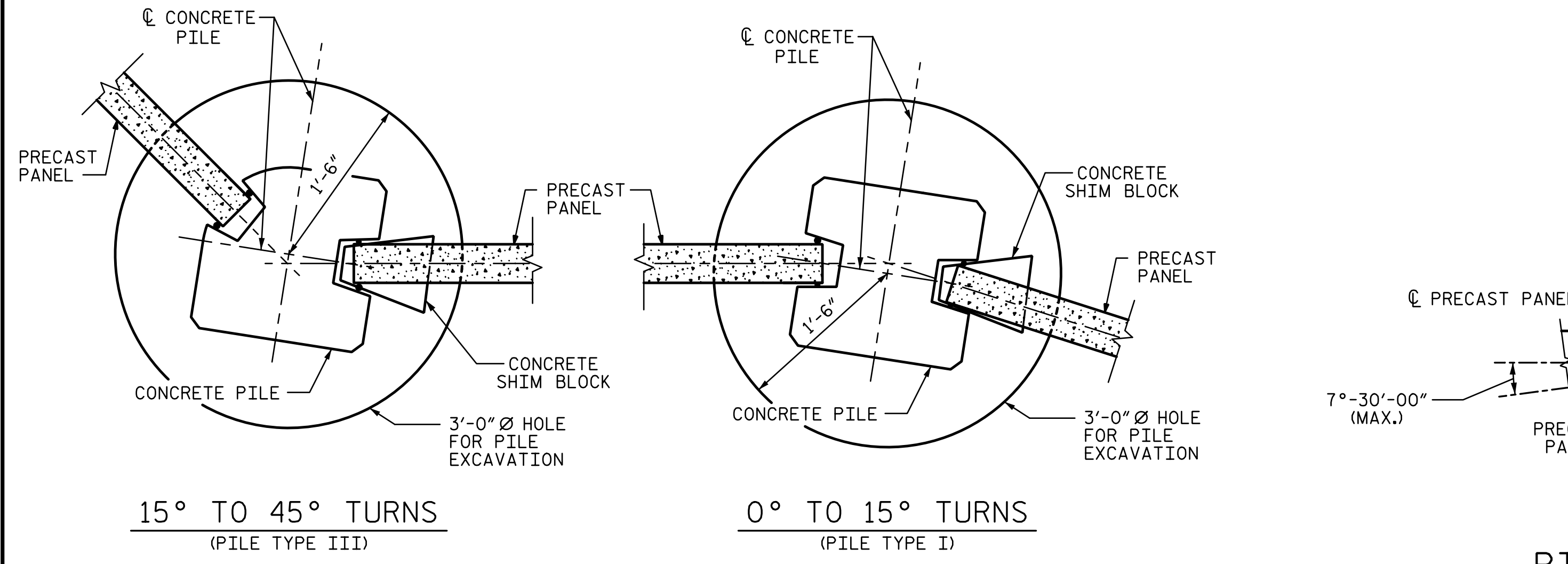
PILE TYPE I			
PILE SPACING	MAXIMUM WALL HEIGHT (H)	VERTICAL REINFORCING STEEL	TIES
15'-0"	H ≤ 15'	4 - #8 EA. FACE	#3 @ 11" CTS.
15'-0"	15' < H ≤ 20'	4 - #10 EA. FACE	#3 @ 10" CTS.

PILE TYPE II			
PILE SPACING	MAXIMUM WALL HEIGHT (H)	VERTICAL REINFORCING STEEL	TIES
15'-0"	H ≤ 15'	4 - #6 EA. FACE	#3 @ 11" CTS.
15'-0"	15' < H ≤ 20'	4 - #8 EA. FACE	#3 @ 10" CTS.

PILE TYPE III			
PILE SPACING	MAXIMUM WALL HEIGHT (H)	VERTICAL REINFORCING STEEL	TIES
15'-0"	H ≤ 15'	3 - #9 SHORT FACE 4 - #9 LONG FACE	#3 @ 11" CTS.
15'-0"	15' < H ≤ 20'	3 - #11 SHORT FACE 4 - #11 LONG FACE	#3 @ 10" CTS.

PILE TYPE III ALT.			
PILE SPACING	MAXIMUM WALL HEIGHT (H)	VERTICAL REINFORCING STEEL	TIES
15'-0"	H ≤ 15'	3 - #9 SHORT FACE 4 - #9 LONG FACE	#3 @ 11" CTS.
15'-0"	15' < H ≤ 20'	3 - #11 SHORT FACE 4 - #11 LONG FACE	#3 @ 10" CTS.

BILL OF MATERIAL -NW13-	
SOUND BARRIER WALL	S.F. 44,952
ARCHITECTURAL SURFACE TREATMENT	S.F. 37,911
QUANTITIES PROVIDED ARE APPROXIMATE AND ARE FOR BID PURPOSES ONLY.	



PROJECT NO. U-4751  
NEW HANOVER COUNTY  
 STATION: 128+33.75 -L- =  
10+00.00 -NW13-  
 SHEET 1 OF 3

DOCUMENT NOT CONSIDERED FINAL UNLESS ALL SIGNATURES COMPLETED		STATE OF NORTH CAROLINA DEPARTMENT OF TRANSPORTATION RALEIGH		<b>SOUND BARRIER WALL NO. -NW13-</b>	
		REVISIONS NO. BY: DATE: NO. BY: DATE:			
		SHEET NO. NW-10 TOTAL SHEETS 17			

DRAWN BY: MBC DATE: 5-17  
 CHECKED BY: JAD DATE: 5-17  
 DESIGN ENGINEER OF RECORD: J. DICHAK DATE: 5-17