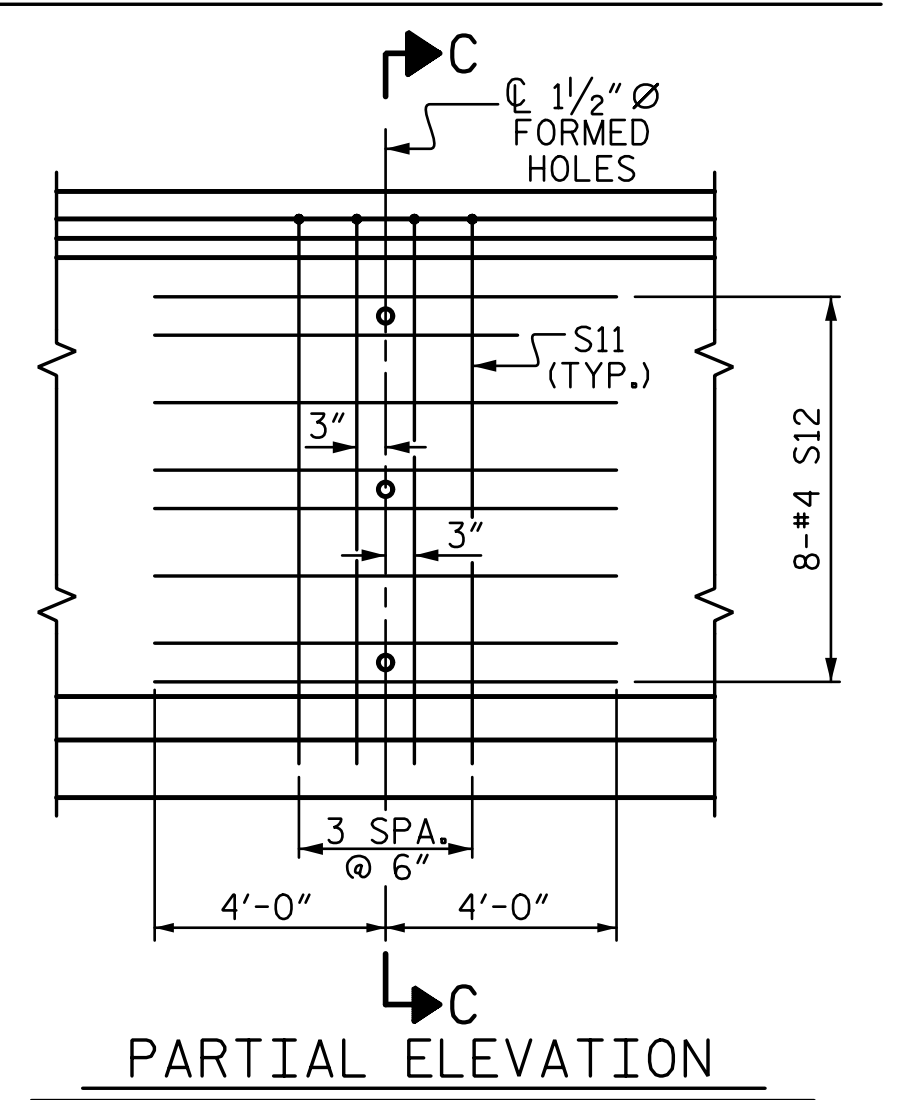
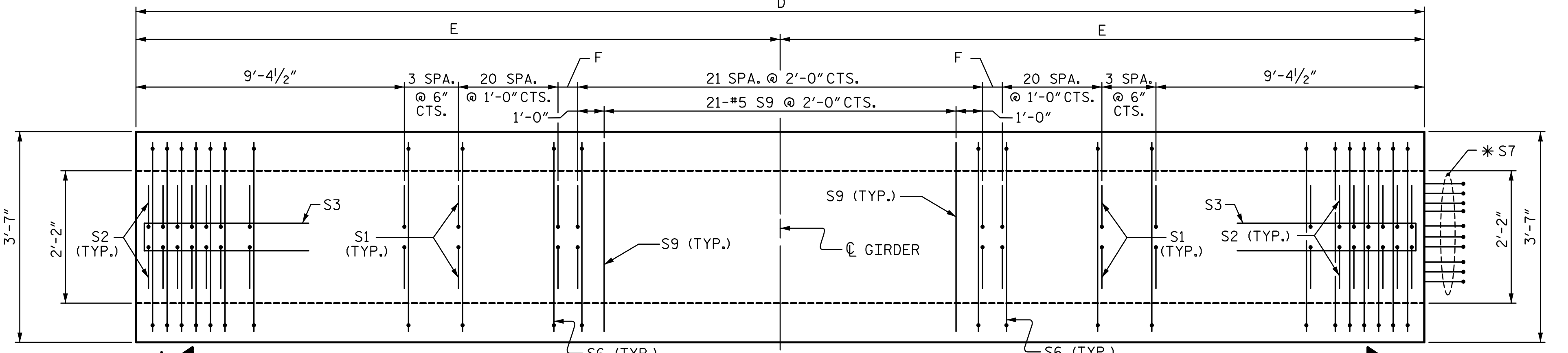
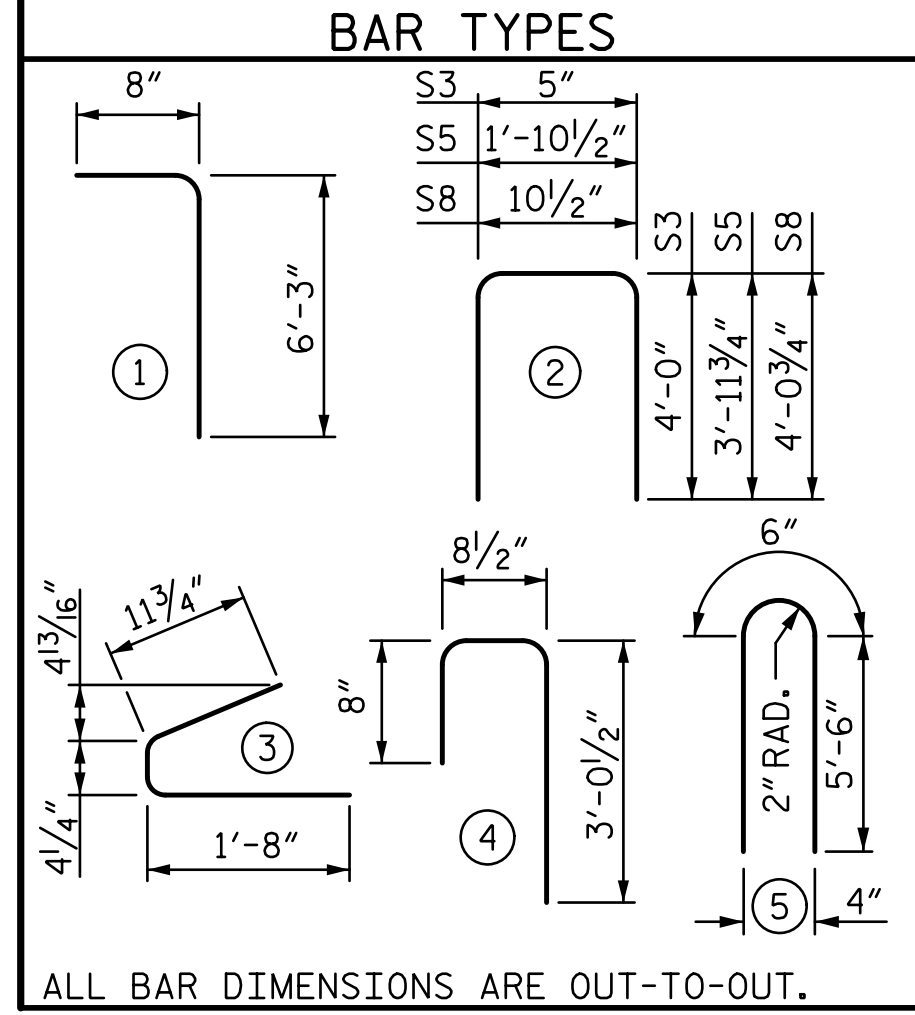


0.6" Ø L. R. GRADE 270 STRANDS		
AREA (SQ. INCHES)	ULTIMATE STRENGTH (LBS. PER STRAND)	APPLIED PRESTRESS (LBS. PER STRAND)
0.217	58,600	43,950

REINFORCING STEEL FOR ONE GDR					
BAR	NUMBER	SIZE	TYPE	LENGTH	WEIGHT
S1	196	#4	1	6'-11"	906
S2	24	#6	1	6'-11"	249
S3	14	#4	2	8'-5"	79
S4	84	#4	3	3'-0"	168
S5	1	#5	2	9'-10"	10
S6	220	#5	4	4'-5"	1013
*S7	10	#5	STR	3'-8"	38
S8	2	#5	2	9'-0"	19
S9	21	#5	STR	3'-3"	71
S10	1	#3	STR	1'-10"	1
S11	8	#5	5	11'-6"	96
S12	16	#4	STR	8'-0"	86

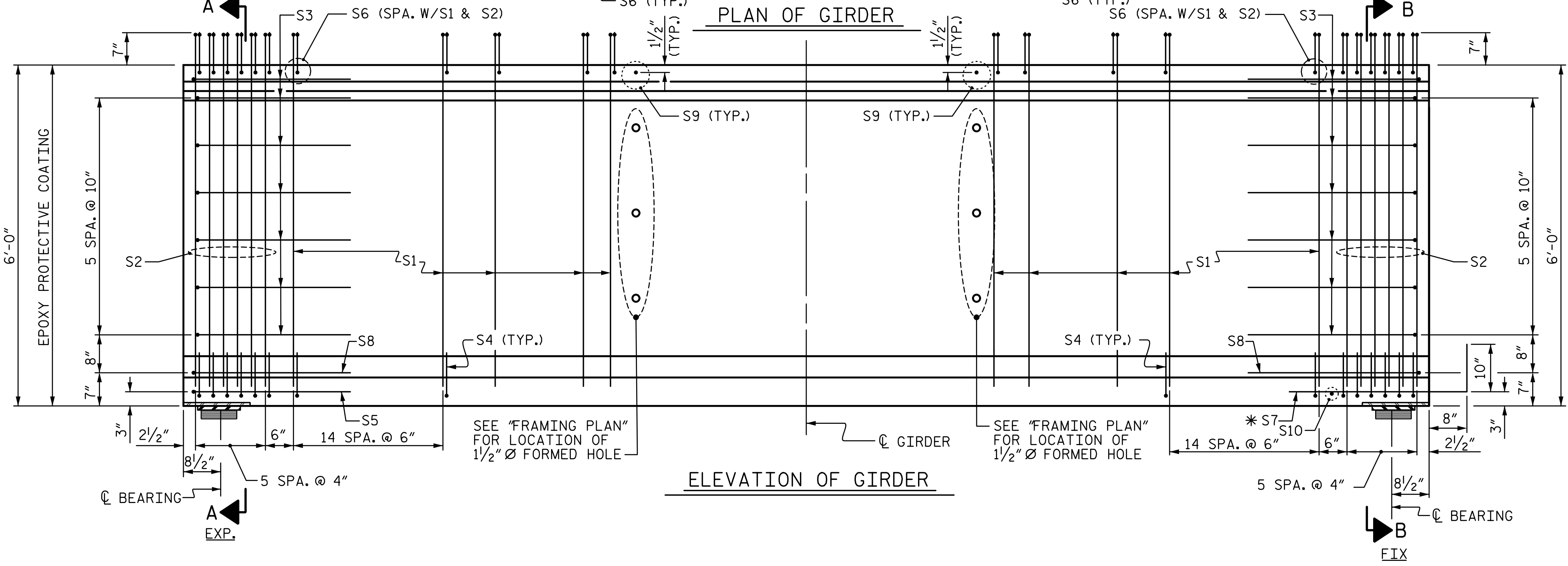
* NOTE: S7 BARS SHALL BE BENT BEFORE SHIPMENT. HEAT BENDING SHALL NOT BE ALLOWED.



QUANTITIES FOR ONE GIRDER			
	REINFORCING STEEL	8500 CONCRETE	0.6" Ø L.R. STRANDS
	LB.	C.Y.	No.
GIRDER	2736	SEE TABLE	40

GIRDERS REQUIRED		
NUMBER	LENGTH	TOTAL LENGTH
4	SEE TABLE	421'-6 1/4"

GIRDER DIMENSIONS				
GDR.	D	E	F	CONCRETE
A1	105'-6"	52'-9"	10 1/2"	22.6 CY
A2	105'-5"	52'-8 1/2"	10"	22.6 CY
A3	105'-4"	52'-8"	9 1/2"	22.6 CY
A4	105'-3 1/4"	52'-7 3/8"	9 1/4"	22.6 CY



PROJECT NO. U-4751
 NEW HANOVER COUNTY
 STATION: 35+12.05 -Y8RPDB-
 SHEET 1 OF 3

STATE OF NORTH CAROLINA
 DEPARTMENT OF TRANSPORTATION
 RALEIGH

SEAL 40317
 ENGINEER
 T. LAWS
 6/30/2017

STV 100 years
 STV ENGINEERS, INC.
 900 West Trade St., Suite 715
 Charlotte, NC 28202
 NC License Number F-5991

SUPERSTRUCTURE					
72" PRESTRESSED CONCRETE MODIFIED BULB TEE CONTINUOUS FOR LIVE LOAD SPAN "A"					
REVISIONS					
NO.	BY:	DATE:	NO.	BY:	DATE:
1			3		
2			4		

SHEET NO. S4-13
TOTAL SHEETS 36

6/30/2017 13:10:13 r:\404_025_U4751_SMU_GL_013_640204.dgn
 +townsend

DRAWN BY: MBC DATE: 3-17
 CHECKED BY: TRL DATE: 4-17
 DESIGN ENGINEER OF RECORD: T. LAWS DATE: 5-17