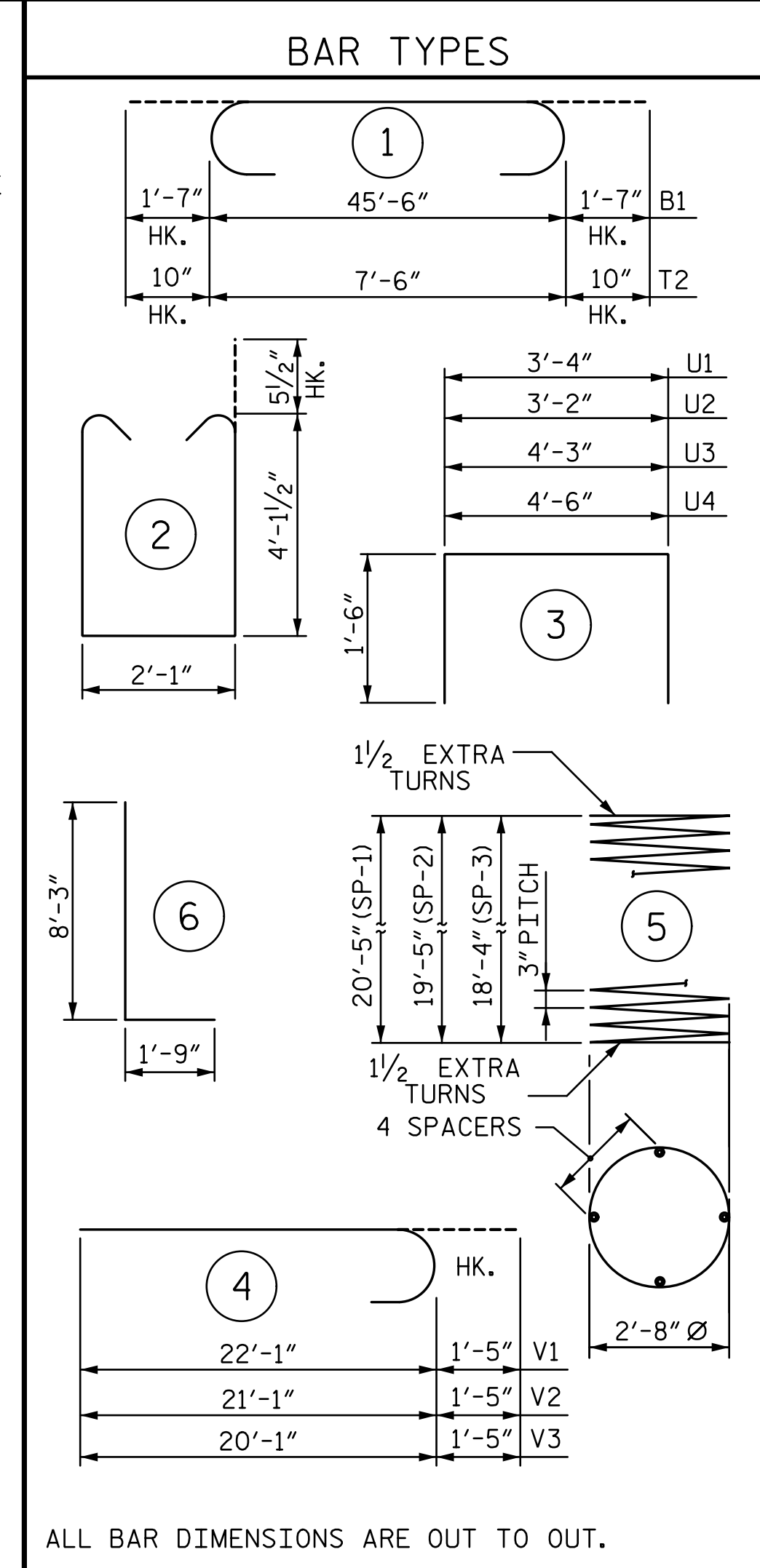
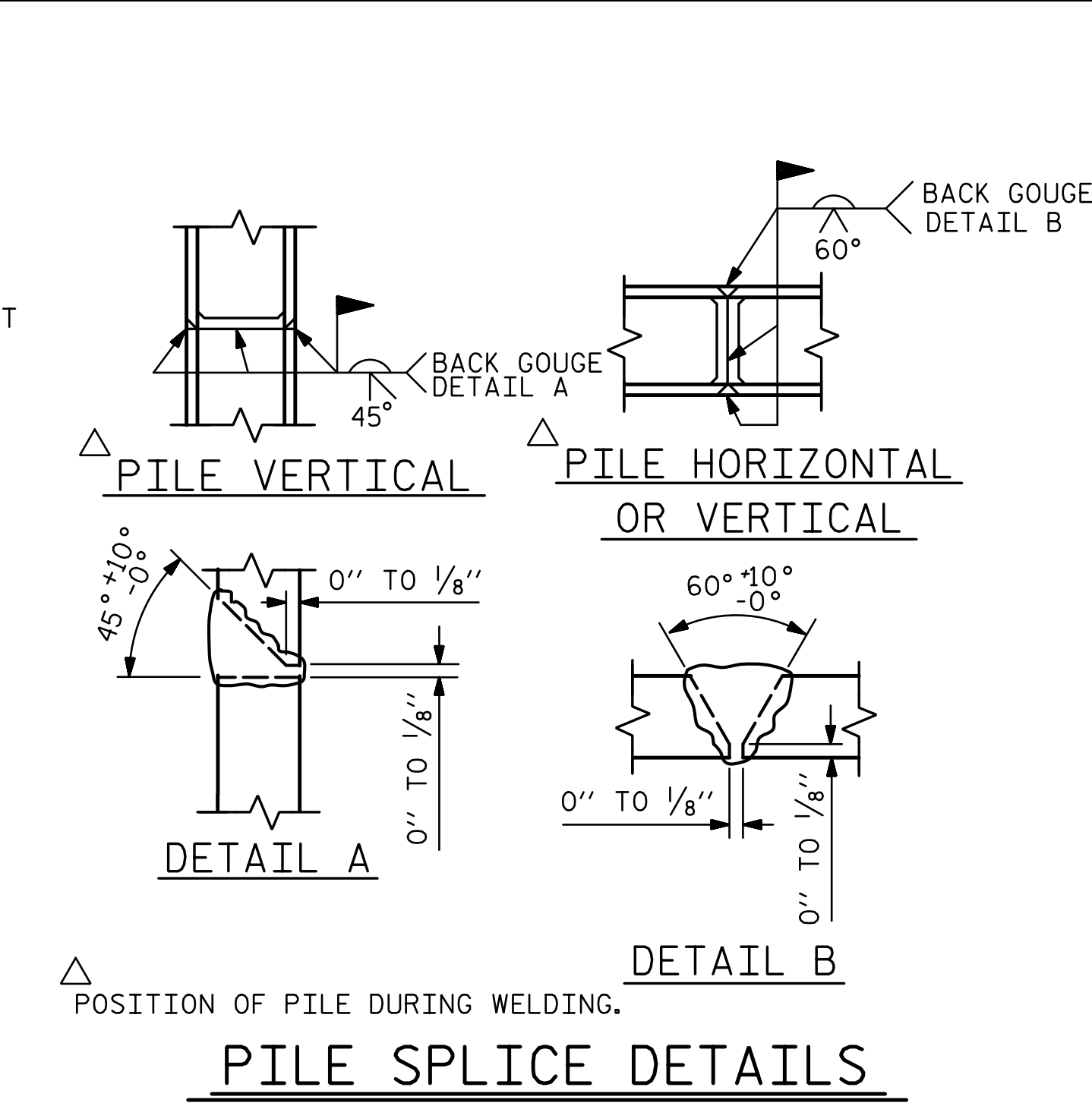
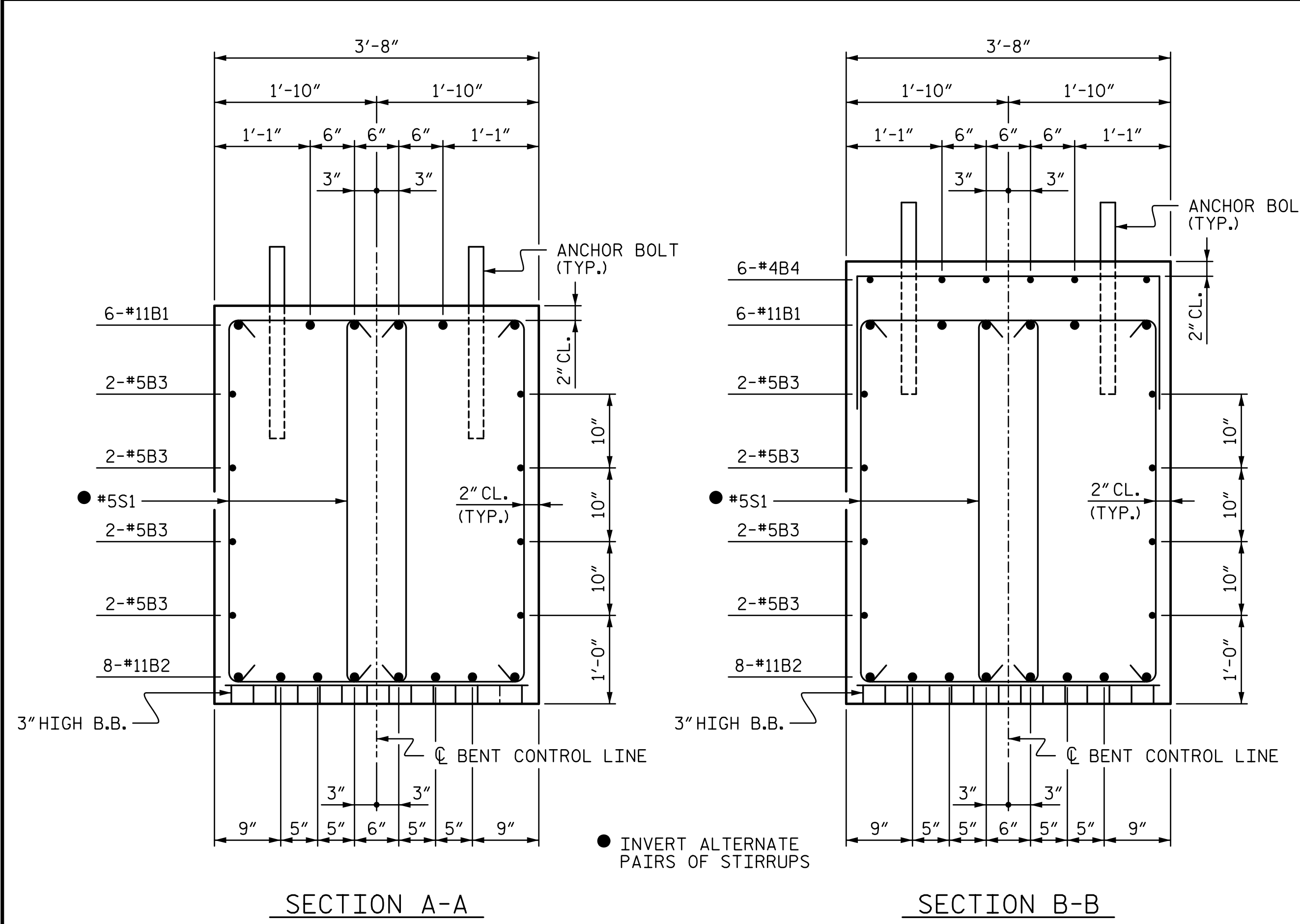


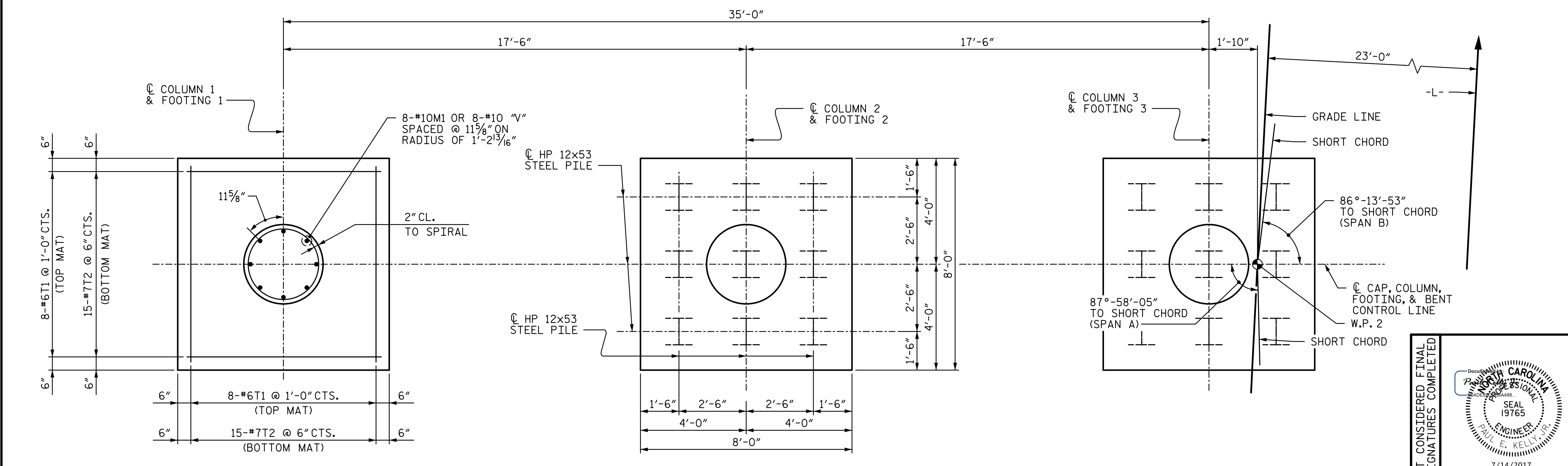
7/12/2017 2:14:40 PM \\USPADG\dfs02\vol3\Projects\4018617_4018617_0001\50_Deliverables & Submittals\U-4751\Structures\Bent\Bent 1\403_057_U4751_SMU_B1_029_640203.dgn



BILL OF MATERIAL					
BAR	NO.	SIZE	TYPE	LENGTH	WEIGHT
B1	6	#11	1	48'-8"	1,551
B2	8	#11	STR	45'-8"	1,941
B3	8	#5	STR	45'-8"	381
B4	24	#4	STR	8'-0"	128
B5	6	#4	STR	4'-0"	16
M1	24	#10	6	10'-0"	1,033
S1	116	#5	2	11'-3"	1,361
T1	48	#6	STR	7'-8"	553
T2	90	#7	1	9'-2"	1,686
U1	48	#4	3	6'-4"	203
U2	8	#4	3	6'-2"	33
U3	3	#4	3	7'-3"	15
U4	3	#4	3	7'-6"	15
V1	8	#10	4	23'-6"	809
V2	8	#10	4	22'-6"	775
V3	8	#10	4	21'-6"	740
SP-1	1	**	5	698'-7"	467
SP-2	1	**	5	665'-7"	445
SP-3	1	**	5	629'-10"	421

QUANTITIES		
REINFORCING STEEL	LBS.	11,240
SPIRAL COLUMN REINFORCING STEEL	LBS.	1,333
CLASS A CONCRETE:		
POUR 1 - FOOTINGS	CU. YDS	21.3
POUR 2 - COLUMNS	CU. YDS	15.1
POUR 3 - CAP	CU. YDS	30.2
TOTAL	CU. YDS	66.6
HP 12x53 STEEL PILES	EA.	27
	FT.	1,350
PILE DRIVING EQUIP. SETP FOR HP 12x53 STEEL PILES	EA.	27
FOUNDATION EXCAVATION	LUMP SUM	

* THE SP-1, SP-2, SP-3 SPIRAL REINFORCING STEEL SHALL BE W20 OR D-20 COLD DRAWN WIRE OR #4 PLAIN OR DEFORMED BAR.



PLAN OF FOOTINGS
(ALL FOOTINGS, COLUMN DIMENSIONS AND REINFORCING STEEL ARE TYPICAL)
(PILE ARRANGMENT FOR FOOTINGS ARE THE SAME)

PROJECT NO. U-4751
 NEW HANOVER COUNTY
 STATION: 225+92.26 -L-
 SHEET 2 OF 2

DOCUMENT NOT CONSIDERED FINAL
UNLESS ALL SIGNATURES COMPLETED

STV ENGINEERS, INC.
900 West Trade St., Suite 715
Charlotte, NC 28202
NC License Number F-5991

STATE OF NORTH CAROLINA DEPARTMENT OF TRANSPORTATION RALEIGH					
SUBSTRUCTURE BENT 1					
REVISIONS					
NO.	BY:	DATE:	NO.	BY:	DATE:
1			3		
2			4		

SHEET NO.	
S3-29	TOTAL SHEETS 36

DRAWN BY: MBC DATE: 4-17
 CHECKED BY: VMW DATE: 5-17
 DESIGN ENGINEER OF RECORD: P. KELLY DATE: 5-17