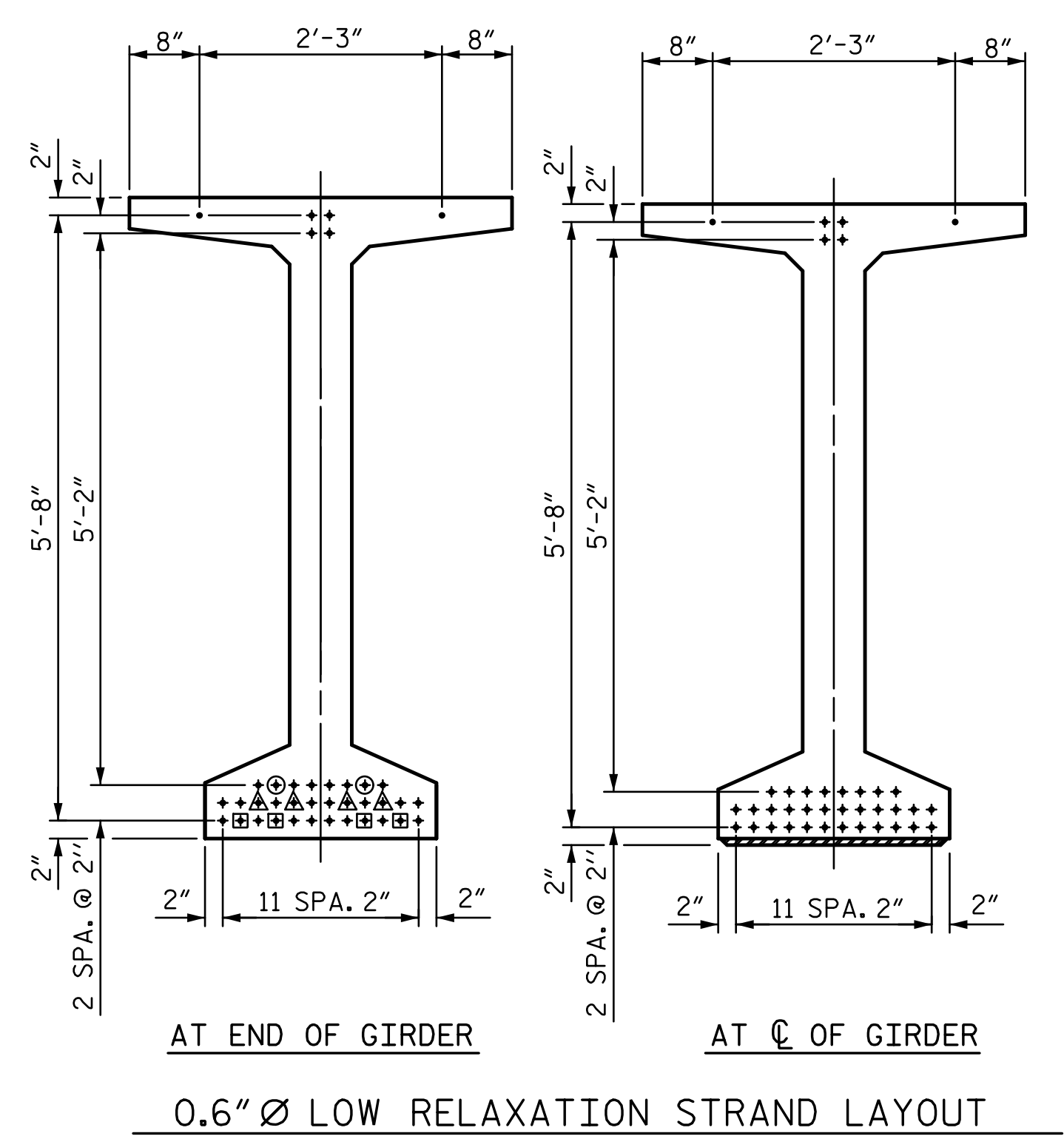


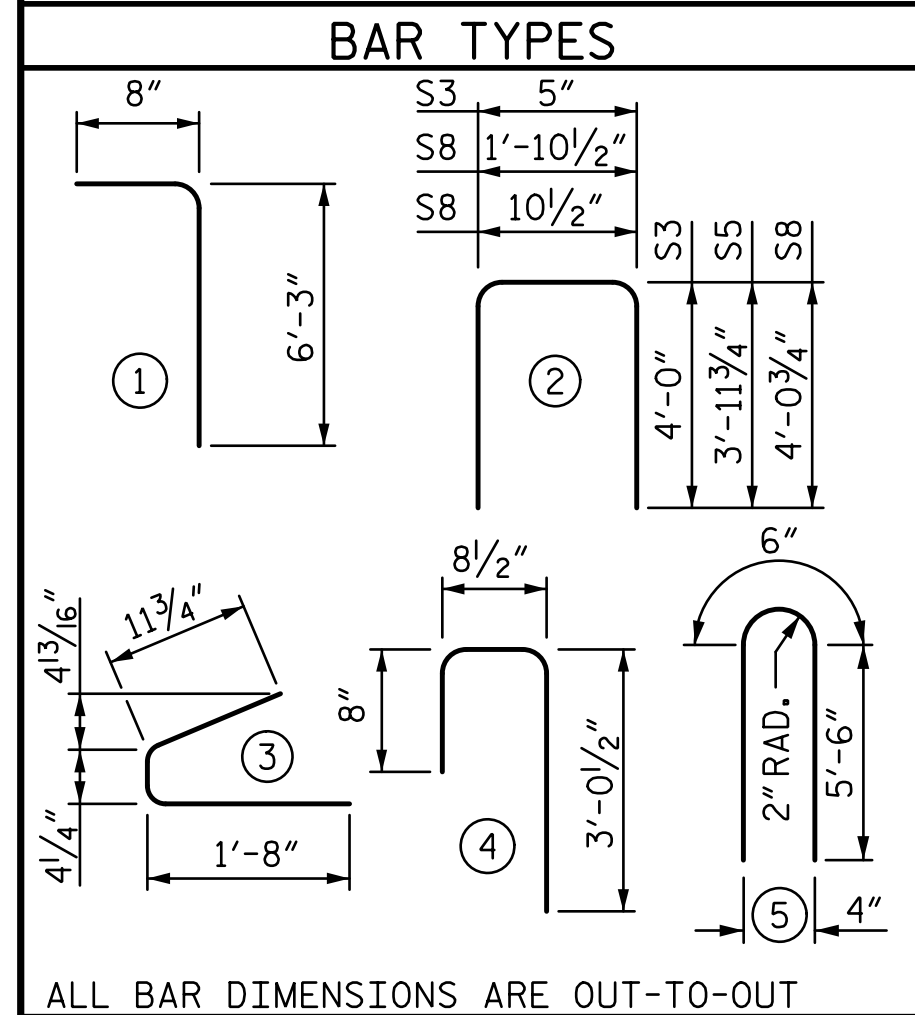
- DEBONDING LEGEND**
- FULLY BONDED STRANDS
 - STRANDS DEBONDED FOR 4'-0" FROM END OF GIRDER
 - ▲ STRANDS DEBONDED FOR 6'-0" FROM END OF GIRDER
 - ◎ STRANDS DEBONDED FOR 8'-0" FROM END OF GIRDER



0.6" Ø L. R. GRADE 270 STRANDS		
AREA (SQUARE INCHES)	ULTIMATE STRENGTH (LBS. PER STRAND)	APPLIED PRESTRESS (LBS. PER STRAND)
0.217	58,600	43,950

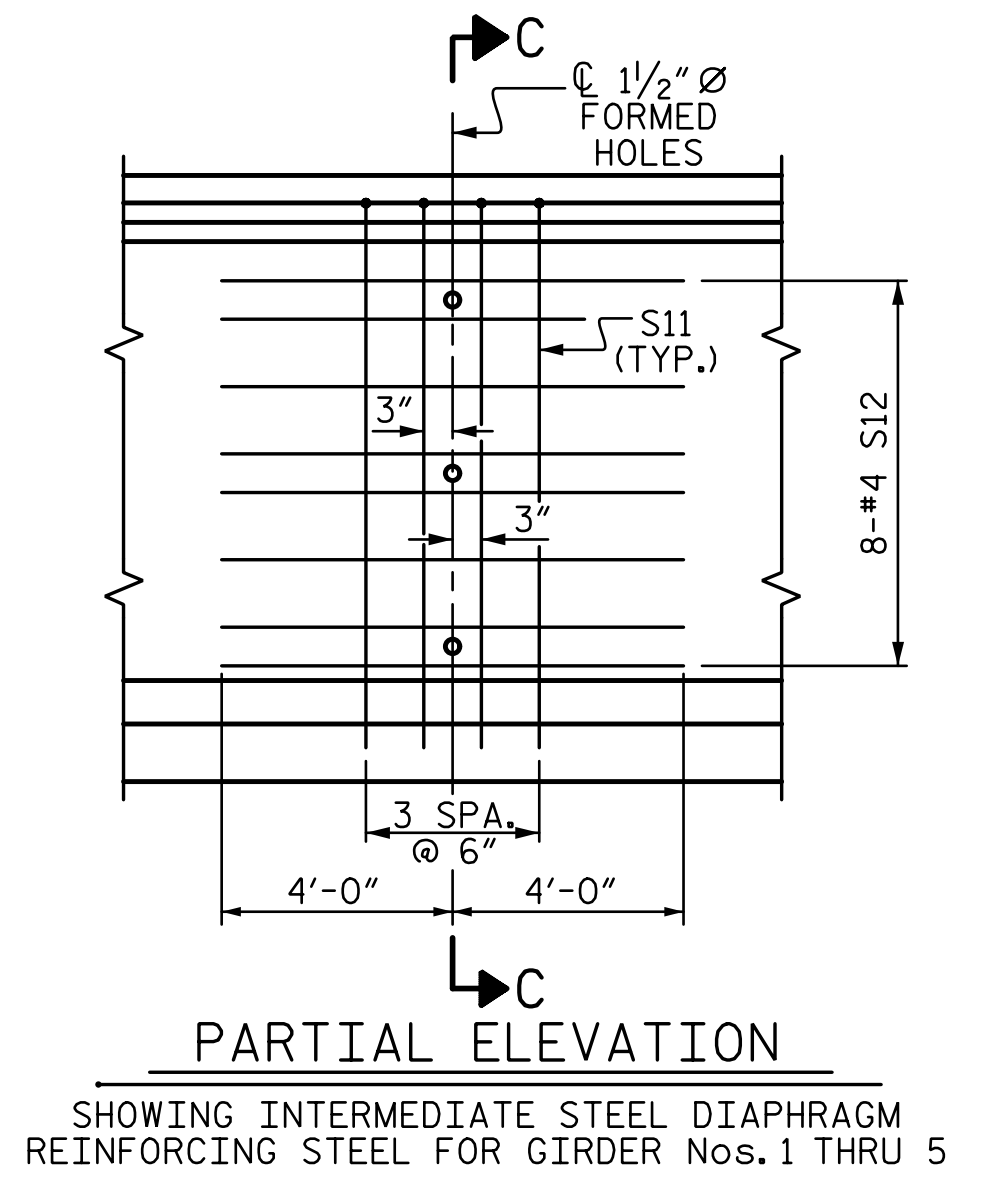
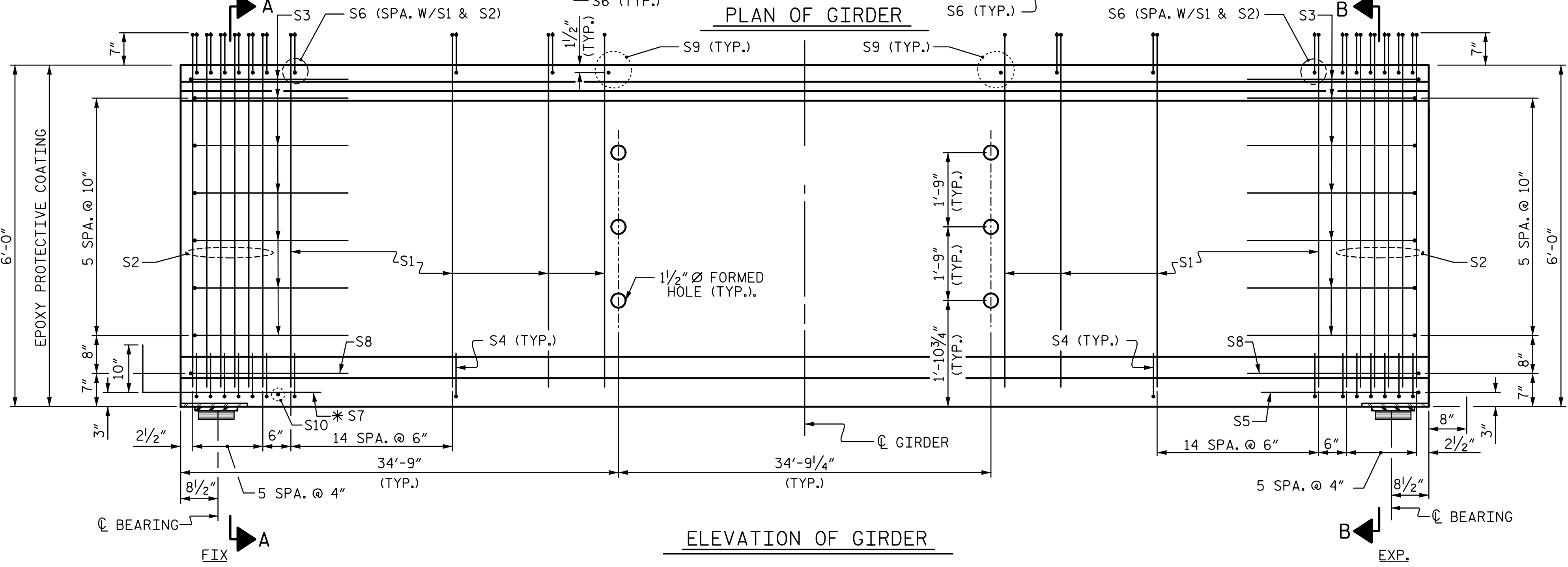
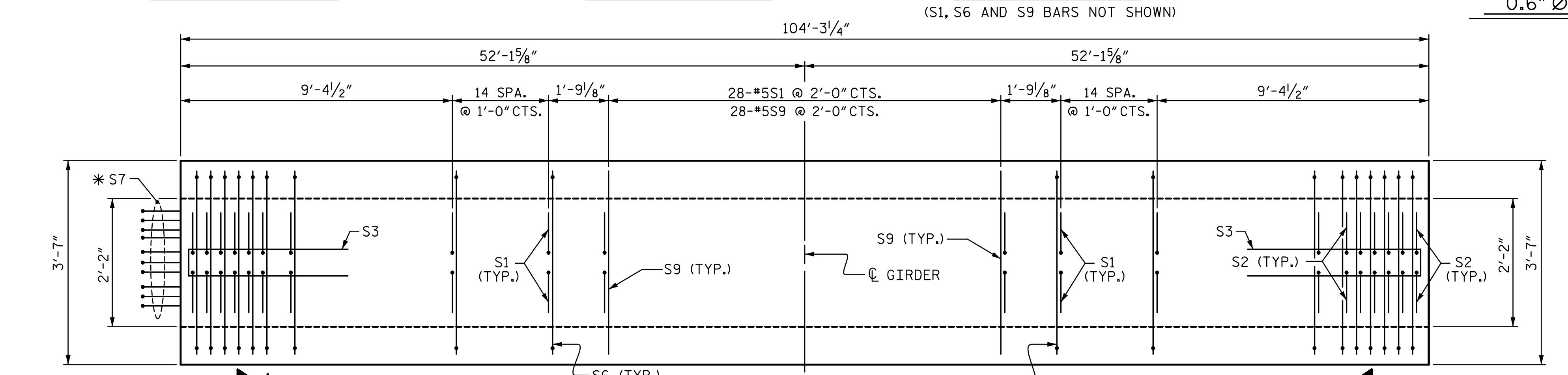
REINFORCING STEEL FOR ONE GDR					
BAR	NUMBER	SIZE	TYPE	LENGTH	WEIGHT
S1	172	#4	1	6'-11"	795
S2	24	#5	1	6'-11"	173
S3	14	#4	2	8'-5"	79
S4	84	#4	3	3'-0"	168
S5	1	#5	2	9'-10"	10
S6	140	#5	4	4'-5"	645
*S7	10	#5	STR	3'-8"	38
S8	2	#5	2	9'-0"	19
S9	28	#5	STR	3'-3"	95
S10	1	#3	STR	1'-10"	1
S11	4	#5	5	11'-6"	48
S12	8	#4	STR	8'-0"	43

* NOTE: S7 BARS SHALL BE BENT BEFORE SHIPMENT. HEAT BENDING SHALL NOT BE ALLOWED.



QUANTITIES FOR ONE GIRDER			
	REINFORCING STEEL	8000 CONCRETE	0.6" Ø L.R. STRANDS
	LB.	C.Y.	No.
GIRDER	2114	22.3	38

GIRDERS REQUIRED		
NUMBER	LENGTH	TOTAL LENGTH
5	104'-3 1/4"	521'-4 1/4"



7/24/2017 12:15:01 r:\403_027_U4751_SMU_GL_014_640203.dgn

DRAWN BY: **MBC** DATE: **3-17**
 CHECKED BY: **TRL** DATE: **5-17**
 DESIGN ENGINEER OF RECORD: **P. KELLY** DATE: **5-17**

DOCUMENT NOT CONSIDERED FINAL
 UNLESS ALL SIGNATURES COMPLETED

PROJECT NO. **U-4751**
NEW HANOVER COUNTY
 STATION: **225+92.26 -L-**
 SHEET 2 OF 3

STATE OF NORTH CAROLINA
 DEPARTMENT OF TRANSPORTATION
 RALEIGH
 SUPERSTRUCTURE
**72" PRESTRESSED CONCRETE
 MODIFIED BULB TEE
 CONTINUOUS FOR LIVE LOAD
 "SPAN B"**

REVISIONS				SHEET NO.
NO.	BY:	DATE:	NO.	DATE:
1			3	
2			4	

SHEET NO. **S3-14**
 TOTAL SHEETS **36**