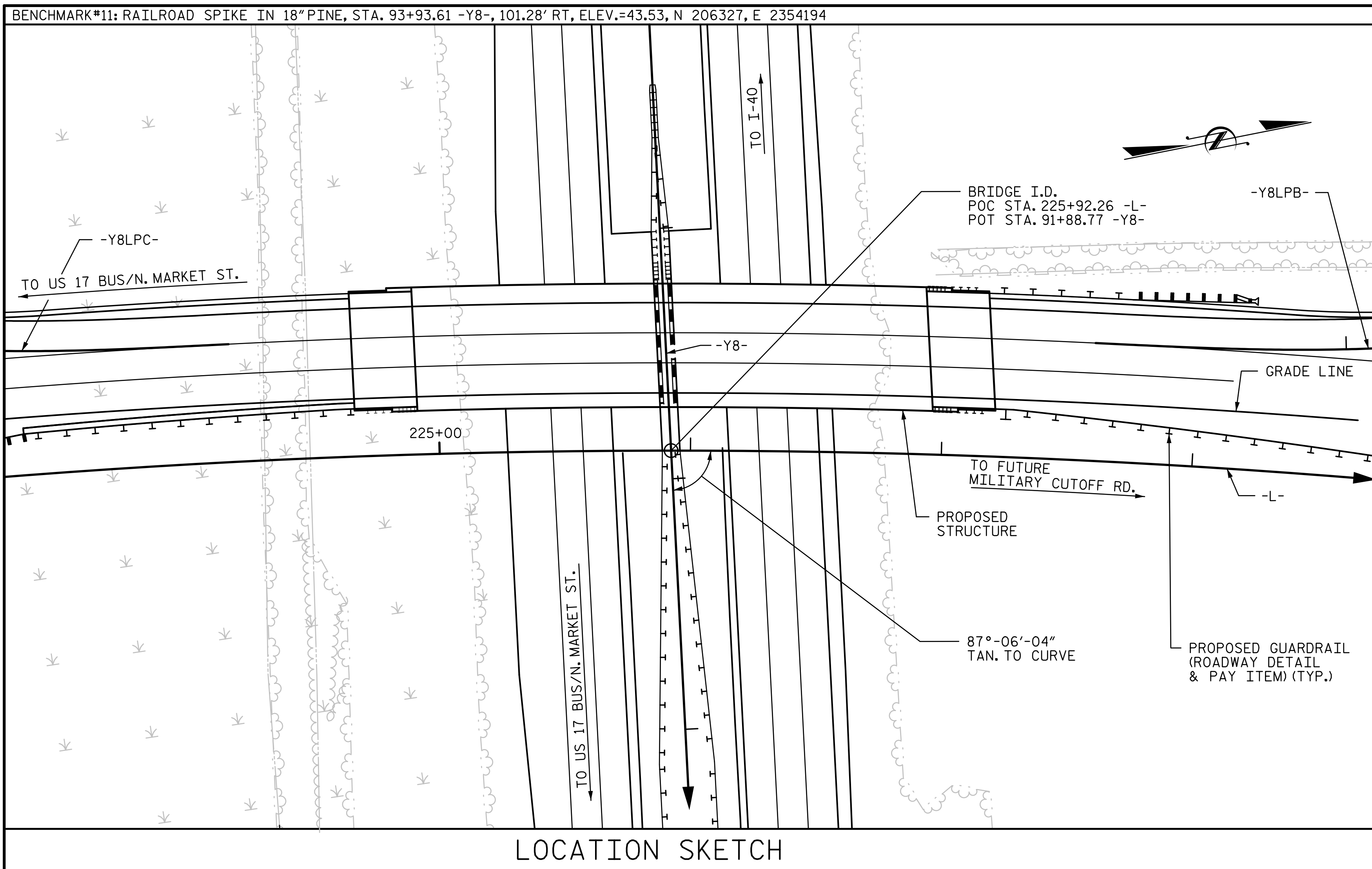


\\USPADG\dfs02\vol3\Projects\4018617\4018617\_000\50\_Deliverables & Submittals\U-475\Structures\Bridges\203\Utility\Final\403\_007\_U475L\_SMU\_GD\_004\_640203.dgn

2:12:51 PM

7/12/2017

ch1tkhmb



FOR UTILITY INFORMATION, SEE UTILITY PLANS AND SPECIAL PROVISIONS

**GENERAL NOTES:**

- ASSUMED LIVE LOAD = HL-93 OR ALTERNATE LOADING.
- THIS BRIDGE HAS BEEN DESIGNED IN ACCORDANCE WITH THE AASHTO LRFD BRIDGE DESIGN SPECIFICATIONS.
- THIS BRIDGE IS LOCATED IN SEISMIC ZONE 1.
- FOR OTHER DESIGN DATA AND GENERAL NOTES, SEE SHEET SN.
- FOR SUBMITTAL OF WORKING DRAWINGS, SEE SPECIAL PROVISIONS.
- FOR FALSEWORK AND FORMWORK, SEE SPECIAL PROVISIONS.
- FOR CRANE SAFETY, SEE SPECIAL PROVISIONS.
- FOR GROUT FOR STRUCTURES, SEE SPECIAL PROVISIONS.
- THE ELEVATION AND CLEARANCE SHOWN ON THE PLANS AT THE POINT OF MINIMUM VERTICAL CLEARANCE ARE FROM THE BEST INFORMATION AVAILABLE. PRIOR TO BEGINNING BRIDGE CONSTRUCTION, VERIFY THE ELEVATION ON THE EXISTING PAVEMENT AND CHECK THE CLEARANCE. REPORT ANY VARIATIONS TO THE ENGINEER. ANY PLAN REVISIONS NECESSARY TO ACHIEVE THE REQUIRED MINIMUM VERTICAL CLEARANCE WILL BE PROVIDED BY THE DEPARTMENT.
- FOR MAINTENANCE AND PROTECTION OF TRAFFIC BENEATH PROPOSED STRUCTURE, SEE SPECIAL PROVISIONS.
- REMOVABLE FORMS MAY BE USED IN LIEU OF METAL STAY-IN-PLACE FORMS IN ACCORDANCE WITH ARTICLE 420-3 OF THE STANDARD SPECIFICATIONS.
- NEEDLE BEAMS WILL NOT BE ALLOWED UNLESS OTHERWISE CALLED FOR ON THE PLANS OR APPROVED BY THE ENGINEER.
- FOR EROSION CONTROL MEASURES, SEE EROSION CONTROL PLANS.
- FOR FOUNDATION NOTES, SEE "FOUNDATION LAYOUT" SHEET.
- FOR PLACING LOAD ON STRUCTURAL MEMBERS, SEE SPECIAL PROVISIONS.
- FOR EMBEDDED CLIPS FOR PRESTRESSED GIRDERS, SEE SPECIAL PROVISIONS.

**TOTAL BILL OF MATERIAL**

	FOUNDATION EXCAVATION FOR BENT	PDA TESTING	REINFORCED CONCRETE DECK SLAB	GROOVING BRIDGE FLOORS	CLASS A CONCRETE	BRIDGE APPROACH SLABS	REINFORCING STEEL	SPIRAL COLUMN REINFORCING STEEL	MODIFIED 72" PRESTRESSED CONCRETE GIRDERS	PILE DRIVING EQUIP. SETUP FOR HP 12x53 STEEL PILES	HP 12x53 STEEL PILES	CONCRETE BARRIER RAIL	4" SLOPE PROTECTION	ELASTOMERIC BEARINGS	EXPANSION JOINT SEALS
	LUMP SUM	EA.	SQ. FT.	SQ. FT.	CU. YD.	LUMP SUM	LBS.	LBS.	NO. LIN. FT.	EA.	NO. LIN. FT.	LIN. FT.	SQ. YD.	LUMP SUM	LUMP SUM
SUPERSTRUCTURE			10,110	10,850		LUMP SUM			10 1,017.8			450.9		LUMP SUM	LUMP SUM
END BENT 1					54.3		7,442			9 9 630			445		
BENT 1	LUMP SUM				66.6		11,240	1,333		27 27 1,350					
END BENT 2					55.0		7,337			9 9 675			1,020		
TOTAL	LUMP SUM	2	10,110	10,850	175.9	LUMP SUM	26,019	1,333	10 1,017.8	45 45 2,665	450.9	1,465	LUMP SUM	LUMP SUM	

PROJECT NO. U-4751  
NEW HANOVER COUNTY  
 STATION: 225+92.26 -L-

SHEET 4 OF 4

				STATE OF NORTH CAROLINA DEPARTMENT OF TRANSPORTATION RALEIGH <b>GENERAL DRAWING</b> FOR BRIDGE ON SR 1409 (MILITARY CUTOFF RD) OVER US 17	
DOCUMENT NOT CONSIDERED FINAL UNLESS ALL SIGNATURES COMPLETED				REVISIONS	
NO.	BY:	DATE:	NO.	BY:	DATE:
1			3		
2			4		
STR. #3					SHEET NO. S3-4 TOTAL SHEETS 36

DRAWN BY : <u>MBC</u>	DATE : <u>4-17</u>	DESIGN ENGINEER OF RECORD: <u>P. KELLY</u>	DATE : <u>5-17</u>
CHECKED BY : <u>TRL</u>	DATE : <u>5-17</u>		