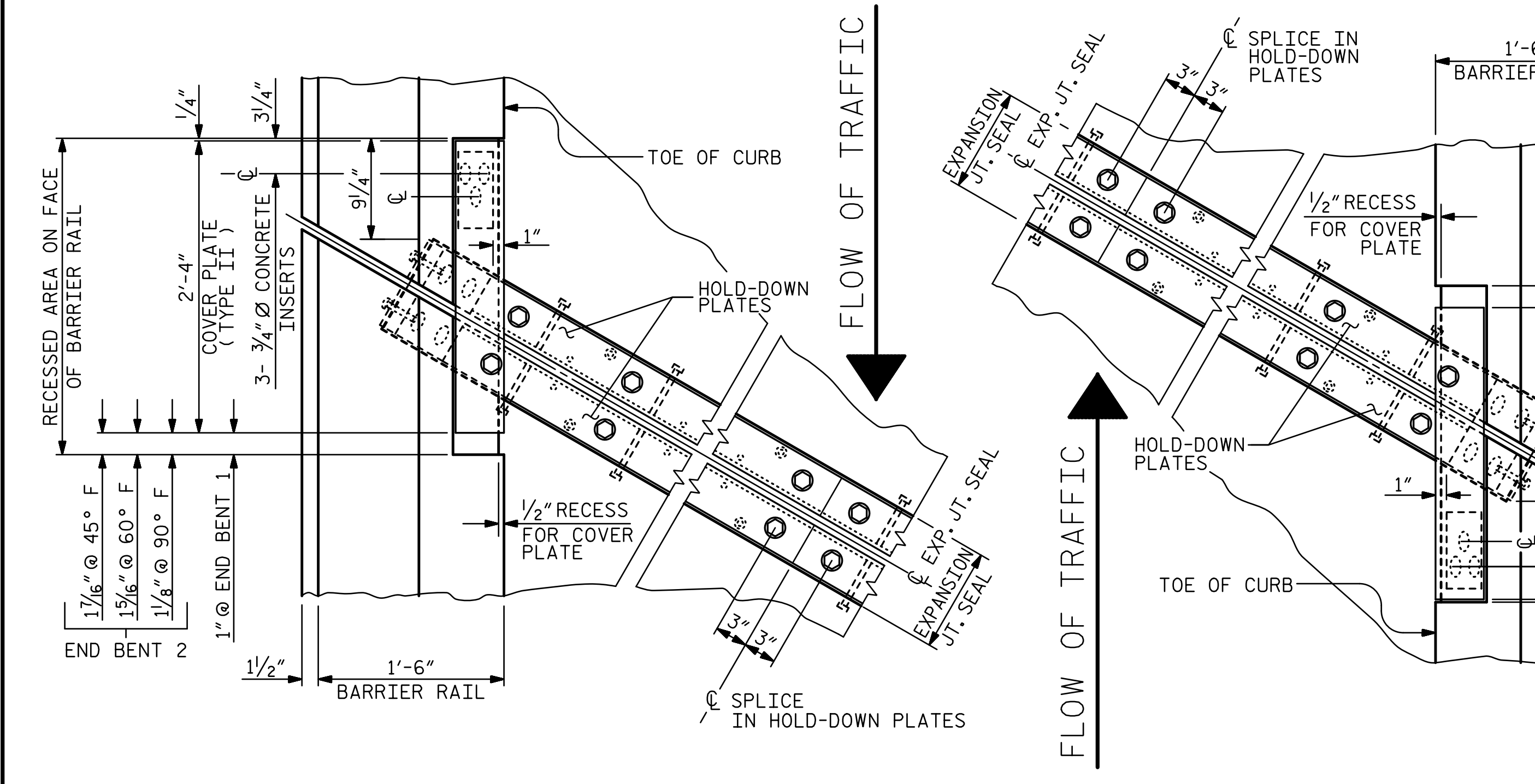
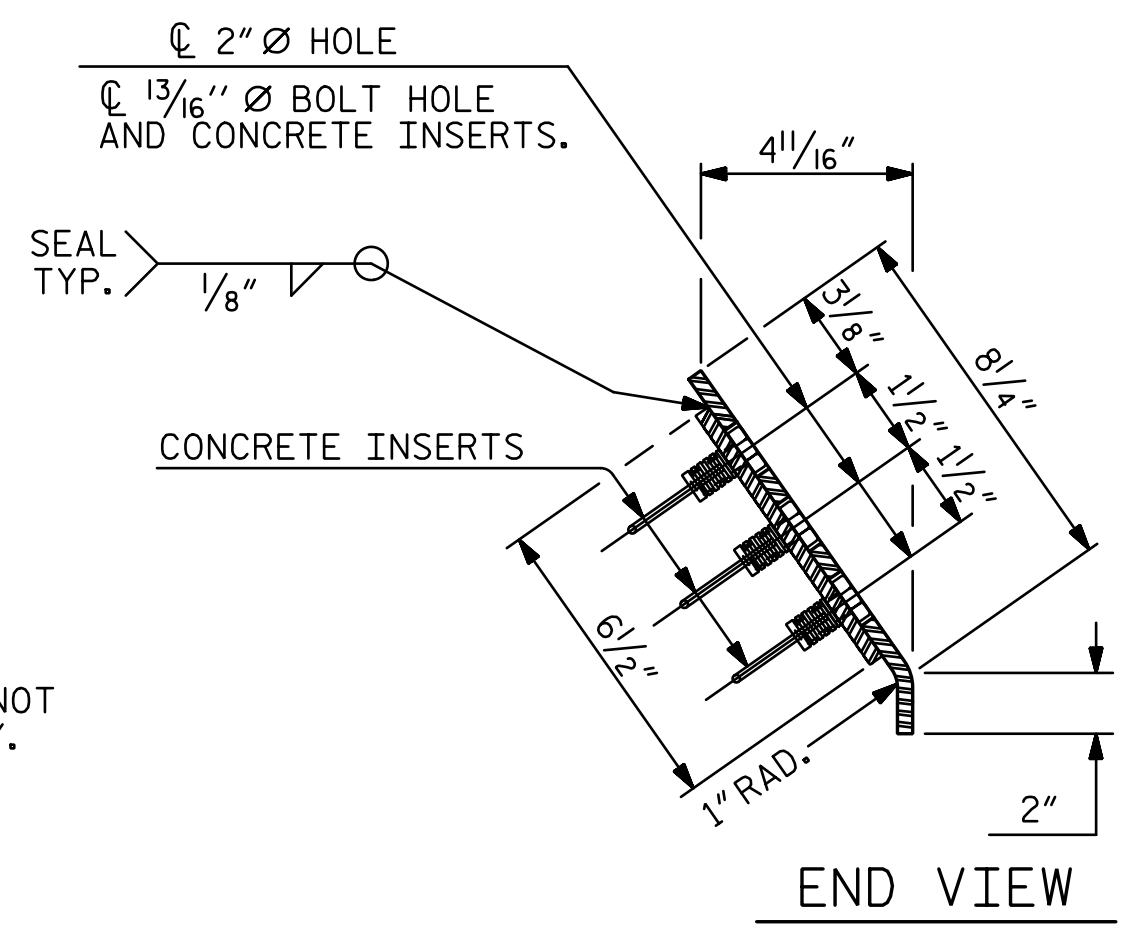


SECTION THRU RAIL NORMAL TO JOINT

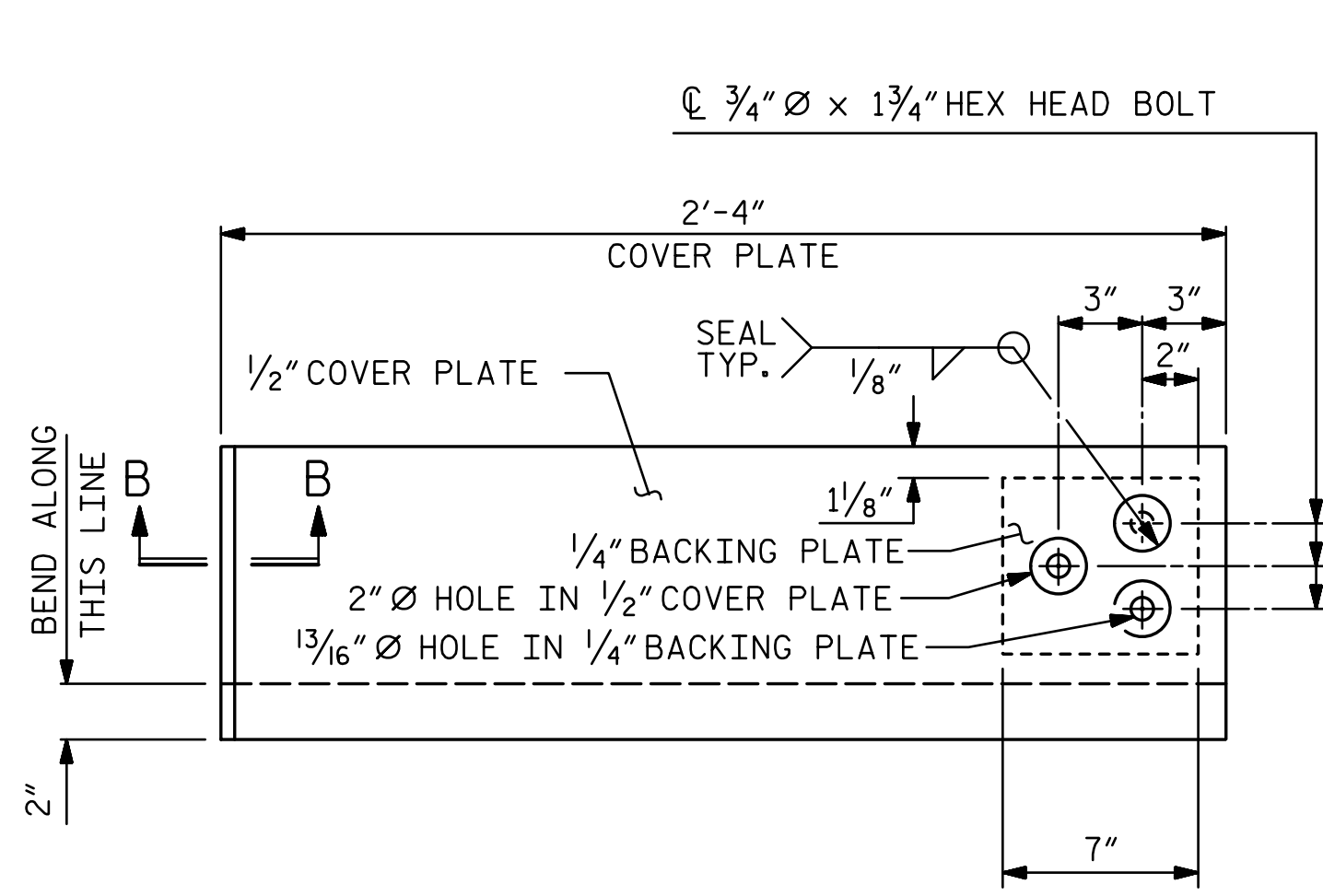


PLAN OF EXPANSION JOINT SEAL

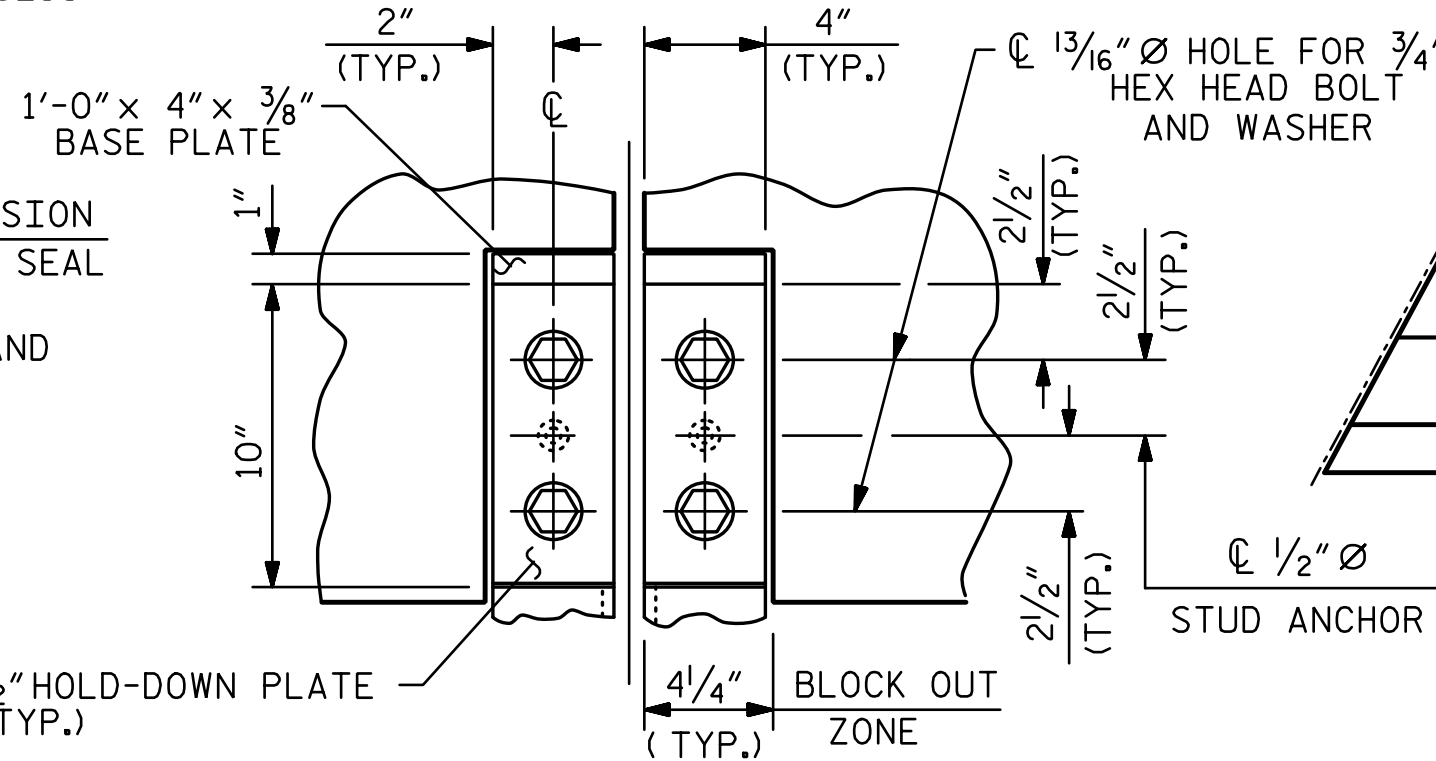
DRAWN BY: TJT DATE: 3-17
 CHECKED BY: AJP DATE: 4-17
 DESIGN ENGINEER OF RECORD: T. TOWNSEND DATE: 3-17



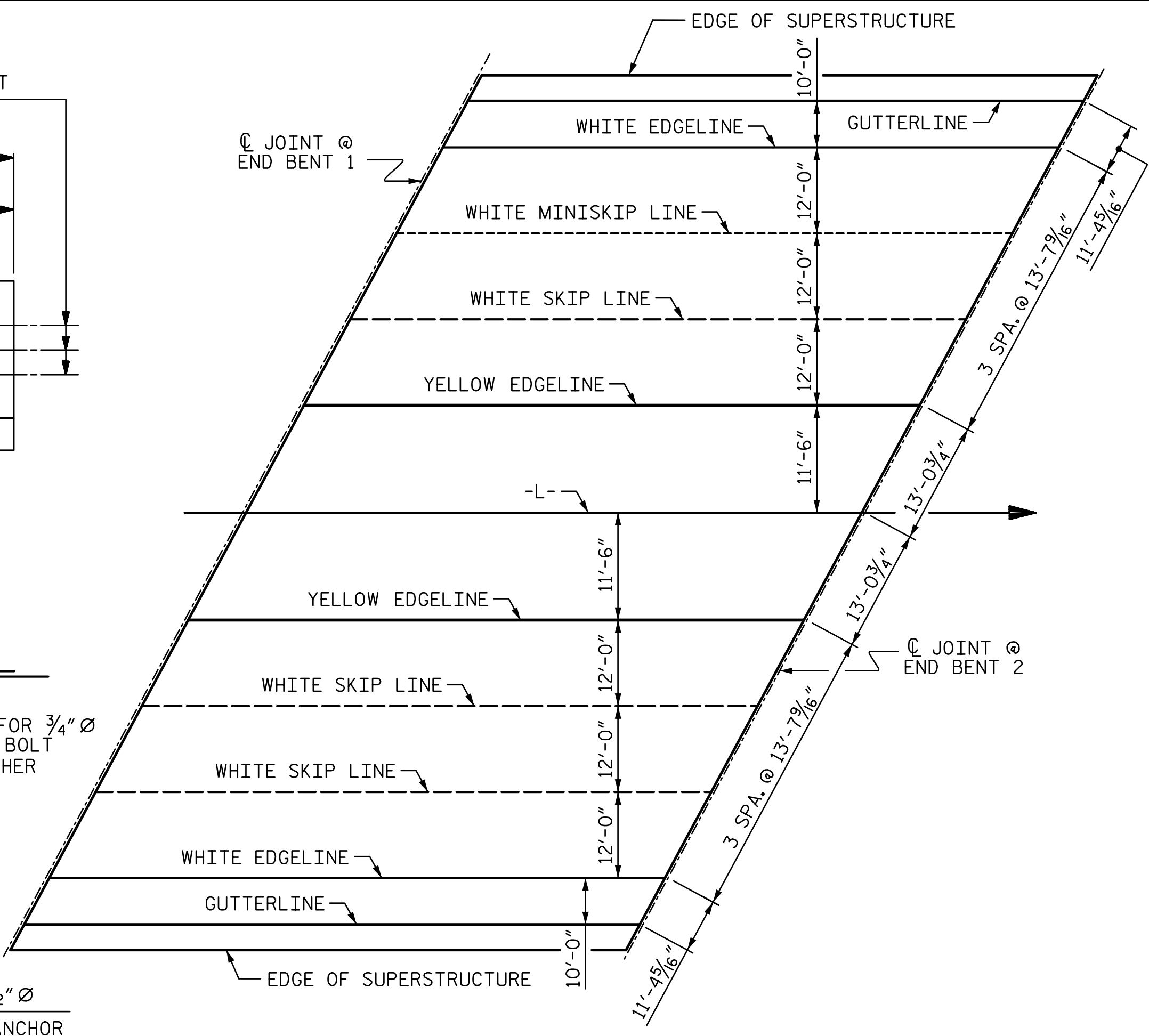
END VIEW



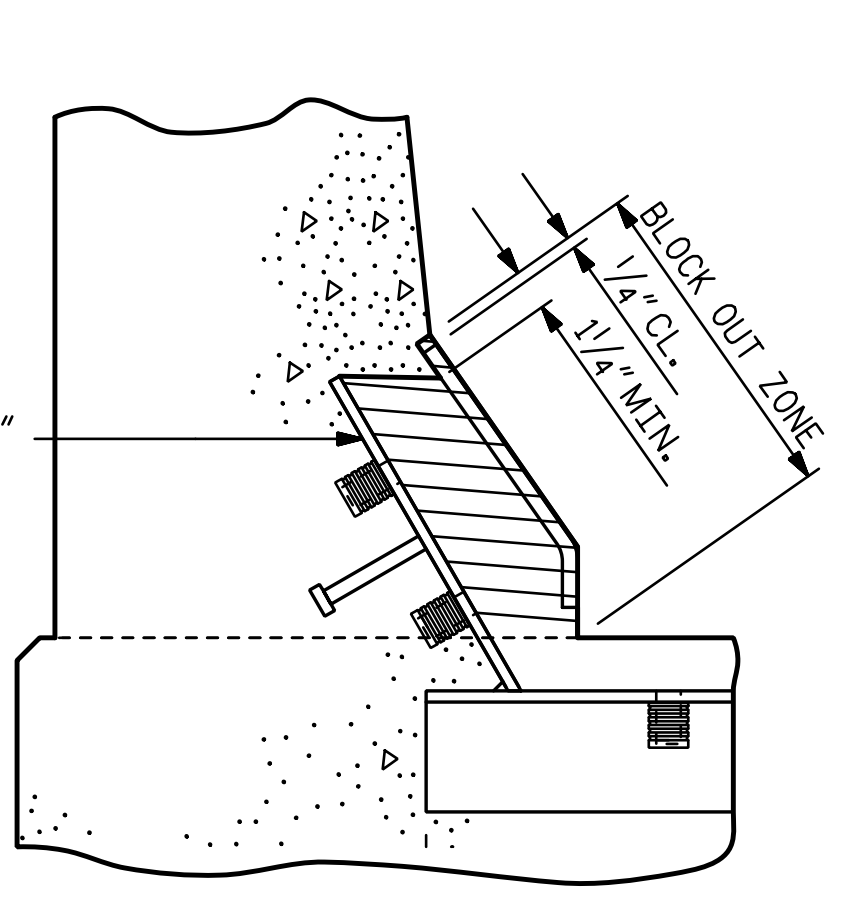
TYPE II - ELEVATION VIEW
COVER PLATE DETAILS



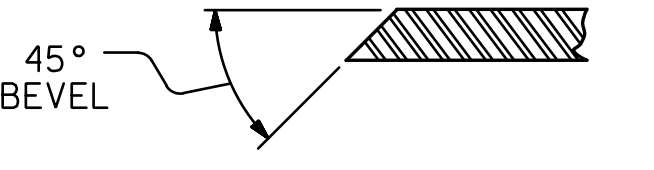
SECTION A - A



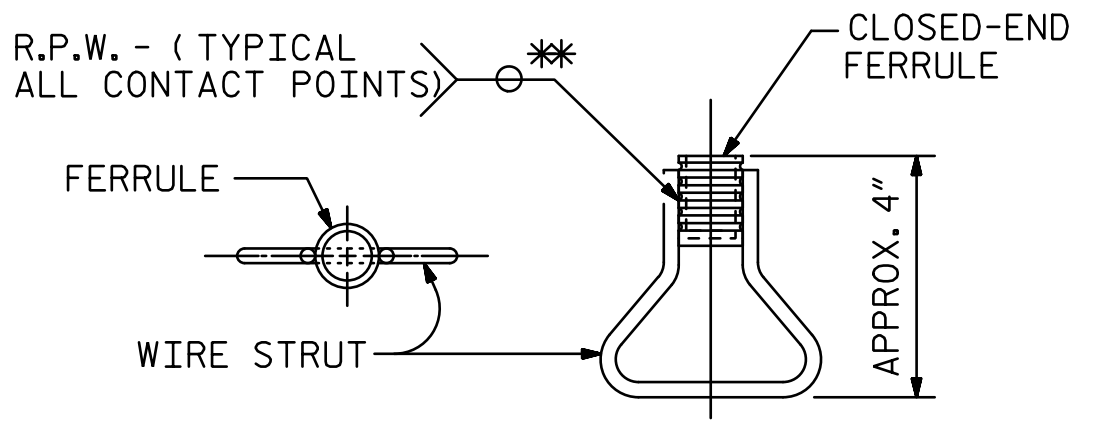
PAVEMENT MARKING ALIGNMENT



BLOCK OUT DETAIL
SEE "SECTION A - A" FOR OTHER DETAILS.



SECTION B - B



CONCRETE INSERT
PLAN ELEVATION

* EACH WELDED ATTACHMENT OF WIRE TO FERRULE SHALL DEVELOP THE TENSILE STRENGTH OF THE WIRE.

PROJECT NO. U-4751
 NEW HANOVER COUNTY
 STATION: 62+99.10 -L-

SHEET 2 OF 2

DOCUMENT NOT CONSIDERED FINAL UNLESS ALL SIGNATURES COMPLETED		STATE OF NORTH CAROLINA DEPARTMENT OF TRANSPORTATION RALEIGH			
		SUPERSTRUCTURE EXPANSION JOINT SEAL DETAILS FOR BARRIER RAIL			
		6/29/2017			
REVISIONS					
NO.	BY:	DATE:	NO.	BY:	DATE:
1			3		
2			4		
SHEET NO. S2-19					
TOTAL SHEETS 30					

6/27/2017 14:00:07 R:\402_037_U4751_SML_JTOL_019_640202.dgn