

LOAD FACTORS:

DESIGN LOAD RATING FACTORS	LIMIT STATE	γ_{DC}	γ_{DW}
	STRENGTH I	1.25	1.50
	SERVICE III	1.00	1.00

LEVEL	VEHICLE	WEIGHT (W) (TONS)	CONTROLLING LOAD RATING (#)	MINIMUM RATING FACTORS (RF)	TONS = W x RF	STRENGTH I LIMIT STATE										SERVICE III LIMIT STATE					COMMENT NUMBER			
						LIVE-LOAD FACTORS (%LL)	MOMENT					SHEAR					LIVE-LOAD FACTORS (%LL)	MOMENT						
							DISTRIBUTION FACTORS (DF)	RATING FACTOR	SPAN	GIRDER LOCATION	DISTANCE FROM LEFT END OF SPAN (++)	DISTRIBUTION FACTORS (DF)	RATING FACTOR	SPAN	GIRDER LOCATION	DISTANCE FROM LEFT END OF SPAN (++)		DISTRIBUTION FACTORS (DF)	RATING FACTOR	SPAN		GIRDER LOCATION	DISTANCE FROM LEFT END OF SPAN (++)	
DESIGN LOAD RATING	HL-93 (INVENTORY)	N/A	①	1.22	--	1.75	0.99	1.34	A	E	49.8	1.10	1.22	A	I	29.6	0.80	0.99	1.38	A	E	49.8		
	HL-93 (OPERATING)	N/A		1.74	--	1.35	0.99	1.74	A	E	49.8	1.10	2.42	A	I	29.6	N/A	--	--	--	--	--		
	HS-20 (INVENTORY)	36.000	②	1.87	67.32	1.75	0.99	1.87	A	E	49.8	1.10	2.36	A	I	29.6	0.80	0.99	1.93	A	E	49.8		
	HS-20 (OPERATING)	36.000		2.42	87.12	1.35	0.99	2.42	A	E	49.8	1.10	3.12	A	I	29.6	N/A	--	--	--	--	--		
LEGAL LOAD RATING	SINGLE VEHICLE (SV)	SNSH	13.500		4.58	61.83	1.40	0.99	5.55	A	E	49.8	1.10	7.52	A	I	29.6	0.80	0.99	4.58	A	E	49.8	
		SNGARBS2	20.000		3.32	66.40	1.40	0.99	4.01	A	E	49.8	1.10	5.26	A	I	29.6	0.80	0.99	3.32	A	E	49.8	
		SNAGRIS2	22.000		3.10	68.20	1.40	0.99	3.75	A	E	49.8	1.10	4.86	A	I	29.6	0.80	0.99	3.10	A	E	49.8	
		SNCOTTS3	27.250		2.28	62.13	1.40	0.99	2.76	A	E	49.8	1.10	3.64	A	I	29.6	0.80	0.99	2.28	A	E	49.8	
		SNAGGRS4	34.925		1.86	64.96	1.40	0.99	2.26	A	E	49.8	1.10	2.97	A	I	29.6	0.80	0.99	1.86	A	E	49.8	
		SNS5A	35.550		1.83	65.06	1.40	0.99	2.21	A	E	49.8	1.10	3.00	A	I	29.6	0.80	0.99	1.83	A	E	49.8	
		SNS6A	39.950		1.66	66.32	1.40	0.99	2.01	A	E	49.8	1.10	2.72	A	I	29.6	0.80	0.99	1.66	A	E	49.8	
		SNS7B	42.000		1.58	66.36	1.40	0.99	1.91	A	E	49.8	1.10	2.65	A	I	29.6	0.80	0.99	1.58	A	E	49.8	
	TRUCK TRACTOR SEMI-TRAILER (TTST)	TNAGRIT3	33.000		2.02	66.66	1.40	0.99	2.45	A	E	49.8	1.10	3.28	A	I	29.6	0.80	0.99	2.02	A	E	49.8	
		TNT4A	33.075		2.02	66.81	1.40	0.99	2.45	A	E	49.8	1.10	3.20	A	I	29.6	0.80	0.99	2.02	A	E	49.8	
		TNT6A	41.600		1.64	68.22	1.40	0.99	1.99	A	E	49.8	1.10	2.83	A	I	29.6	0.80	0.99	1.64	A	E	49.8	
		TNT7A	42.000		1.64	68.88	1.40	0.99	1.99	A	E	49.8	1.10	2.77	A	I	29.6	0.80	0.99	1.64	A	E	49.8	
		TNT7B	42.000		1.68	70.56	1.40	0.99	2.03	A	E	49.8	1.10	2.60	A	I	29.6	0.80	0.99	1.68	A	E	49.8	
		TNAGRIT4	43.000		1.61	69.23	1.40	0.99	1.95	A	E	49.8	1.10	2.51	A	I	29.6	0.80	0.99	1.61	A	E	49.8	
		TNAGT5A	45.000		1.53	68.85	1.40	0.99	1.85	A	E	49.8	1.10	2.48	A	I	29.6	0.80	0.99	1.53	A	E	49.8	
TNAGT5B	45.000	③	1.51	67.95	1.40	0.99	1.83	A	E	49.8	1.10	2.37	A	I	29.6	0.80	0.99	1.51	A	E	49.8			

NOTES:

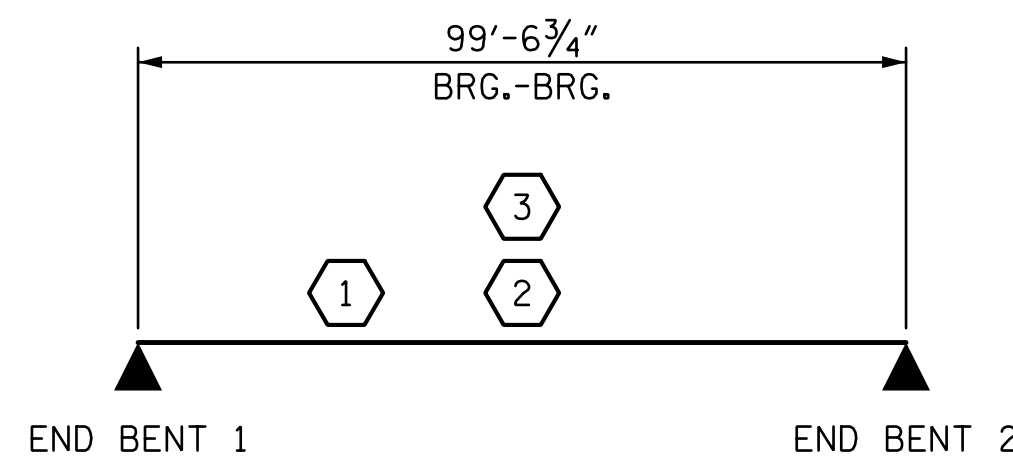
MINIMUM RATING FACTORS ARE BASED ON THE STRENGTH I AND SERVICE III LIMIT STATES.

ALLOWABLE STRESSES FOR SERVICE III LIMIT STATE ARE AS REQUIRED FOR DESIGN.

COMMENTS:

- 1.
- 2.
- 3.
- 4.

③	CONTROLLING LOAD RATING
①	DESIGN LOAD RATING (HL-93)
②	DESIGN LOAD RATING (HS-20)
③	LEGAL LOAD RATING **
** SEE CHART FOR VEHICLE TYPE	
GIRDER LOCATION	
I - INTERIOR GIRDER	
E - EXTERIOR GIRDER	



LRFR SUMMARY

PROJECT NO. U-4751
NEW HANOVER COUNTY
 STATION: 62+99.10 -L-

DOCUMENT NOT CONSIDERED FINAL UNLESS ALL SIGNATURES COMPLETED			STATE OF NORTH CAROLINA DEPARTMENT OF TRANSPORTATION RALEIGH STANDARD LRFR SUMMARY FOR PRESTRESSED CONCRETE GIRDERS (NON-INTERSTATE TRAFFIC)		
	REVISIONS				
	NO.	BY:	DATE:	NO.	BY:
1			3		
2			4		

DRAWN BY : MBC DATE : 4-17
 CHECKED BY : AJP DATE : 4-17
 DESIGN ENGINEER OF RECORD: T. TOWNSEND DATE : 5-17