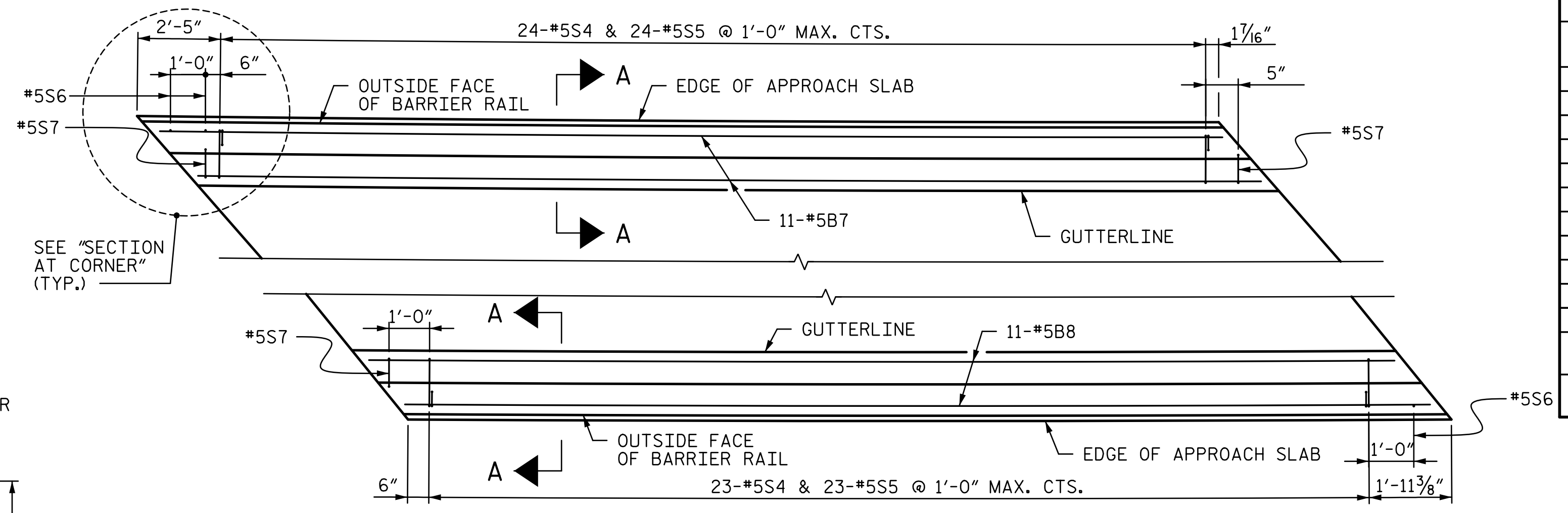
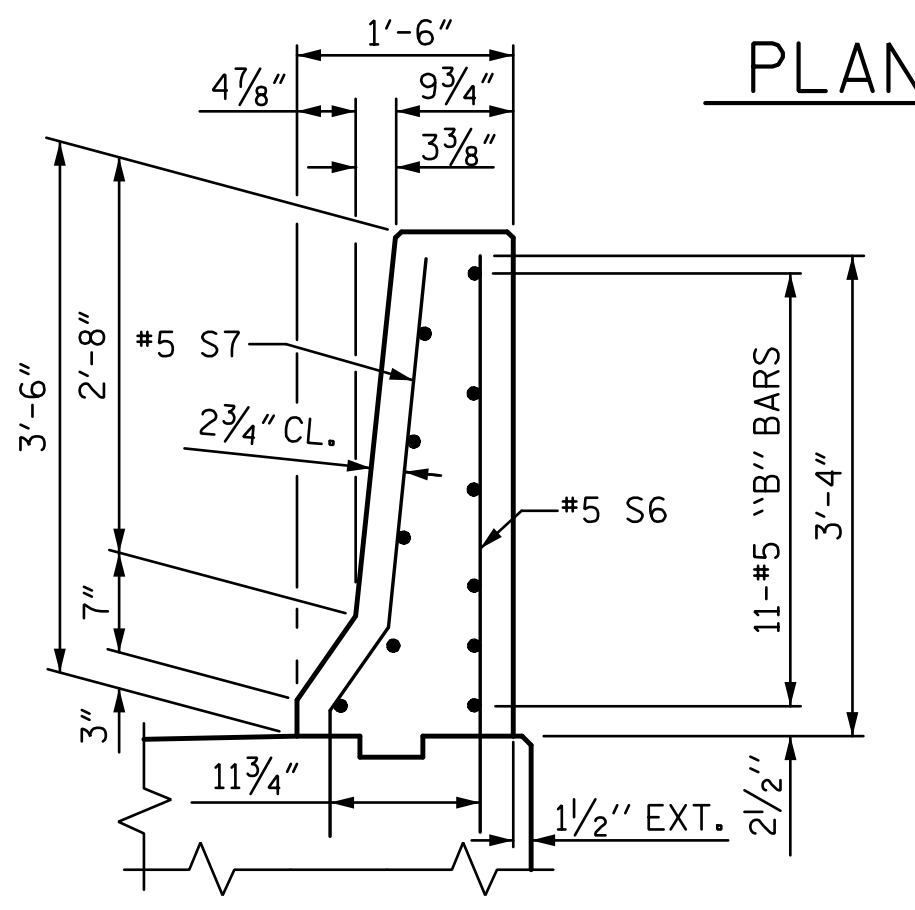


NOTES:
 APPROACH SLAB SHALL NOT BE CONSTRUCTED PRIOR TO COMPLETION OF THE BRIDGE DECK.
 AREA BETWEEN THE WINGWALL AND APPROACH SLAB AT END BENT 2 SHALL BE GRADED TO DRAIN THE WATER AWAY FROM THE FILL FACE OF THE BRIDGE AND SHALL BE PAVED. SEE ROADWAY PLANS.
 FOR EXPANSION JOINT SEALS, SEE SPECIAL PROVISIONS.
 ALL REINFORCING IN BARRIER RAILS SHALL BE EPOXY COATED.
 THE BARRIER RAIL ON EACH APPROACH SLAB SHALL NOT BE CAST UNTIL ALL APPROACH SLAB CONCRETE HAS BEEN CAST AND REACHED A MINIMUM COMPRESSIVE STRENGTH OF 3,000 PSI.
 THE COST OF THE BARRIER RAIL ON THE APPROACH SLAB SHALL BE INCLUDED IN THE LINEAR FOOT CONTRACT PRICE FOR "CONCRETE BARRIER RAIL"
 FOR CONCRETE ISLAND REINFORCEMENT AND DETAILS, SEE "MONOLITHIC CONCRETE ISLAND" SHEET

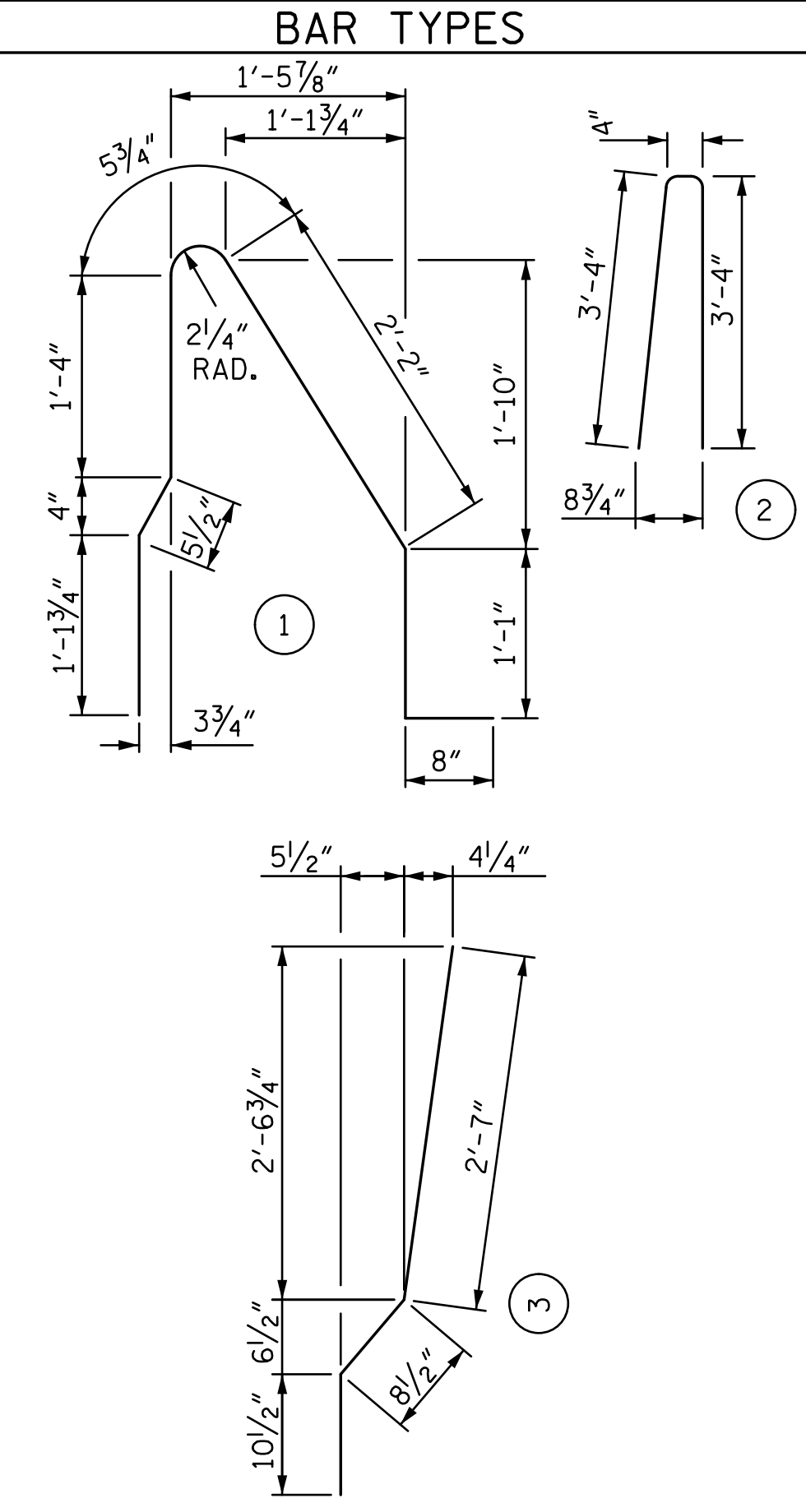
BUILDDOWN DETAIL



PLAN OF BARRIER RAIL @ END BENT 1



SECTION AT CORNER



ALL BAR DIMENSIONS ARE OUT TO OUT

BILL OF MATERIAL

BARRIER RAIL ONLY ON APPROACH SLAB 1

BAR	NO.	SIZE	TYPE	LENGTH	WEIGHT
* B7	11	#5	STR	25'-1"	288
* B8	11	#5	STR	24'-2"	277
* S4	47	#5	1	7'-4"	359
* S5	47	#5	2	7'-0"	343
* S6	3	#5	STR	4'-0"	13
* S7	3	#5	3	4'-2"	13
* EPOXY COATED REINFORCING STEEL					LBS 1,293
CLASS AA CONCRETE					C.Y. 6.9

PROJECT NO. U-4751
NEW HANOVER COUNTY
 STATION: 38+94.20 -L-
 SHEET 2 OF 3

DOCUMENT NOT CONSIDERED FINAL
 UNLESS ALL SIGNATURES COMPLETED

STV 100 Years
 STV ENGINEERS, INC.
 900 West Trade St., Suite 715
 Charlotte, NC 28202
 NC License Number F-5991
 6/22/2017

STATE OF NORTH CAROLINA
 DEPARTMENT OF TRANSPORTATION
 RALEIGH

BRIDGE APPROACH SLAB DETAILS

REVISIONS				SHEET NO.
NO.	BY:	DATE:	NO.	DATE:
1			3	
2			4	

TOTAL SHEETS	36
SHEET NO.	S1-35

6/22/2017 3:18:20 PM R:\401.069_U4751_SML_AS_035_640201.dgn

DRAWN BY :	MBC	DATE :	3-17	DESIGN ENGINEER OF RECORD:	V. WU	DATE :	5-17
CHECKED BY :	TRL	DATE :	5-17				