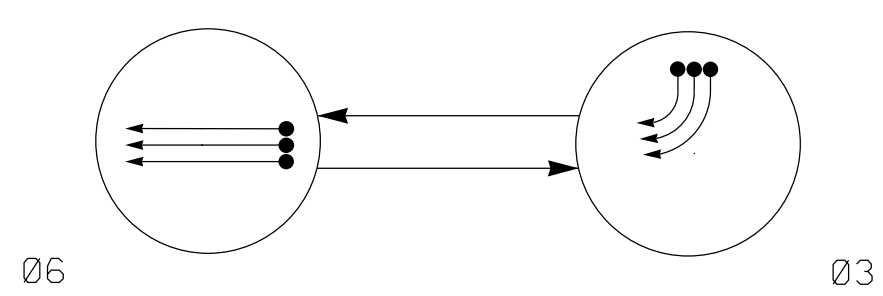


PHASING DIAGRAM



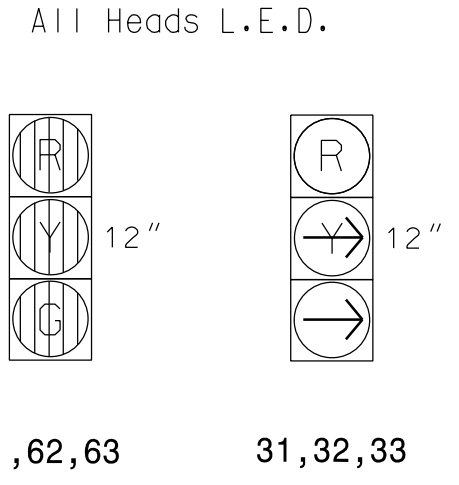
PHASING DIAGRAM DETECTION LEGEND

- ◄● DETECTED MOVEMENT
- ◄ UNDETECTED MOVEMENT (OVERLAP)
- ◄ UNSIGNALIZED MOVEMENT
- ◄ PEDESTRIAN MOVEMENT

TABLE OF OPERATION

SIGNAL FACE	PHASE		
	03	06	FLUSH HEADS
61,62,63	R	G	Y
31,32,33	→	R	

SIGNAL FACE I.D.



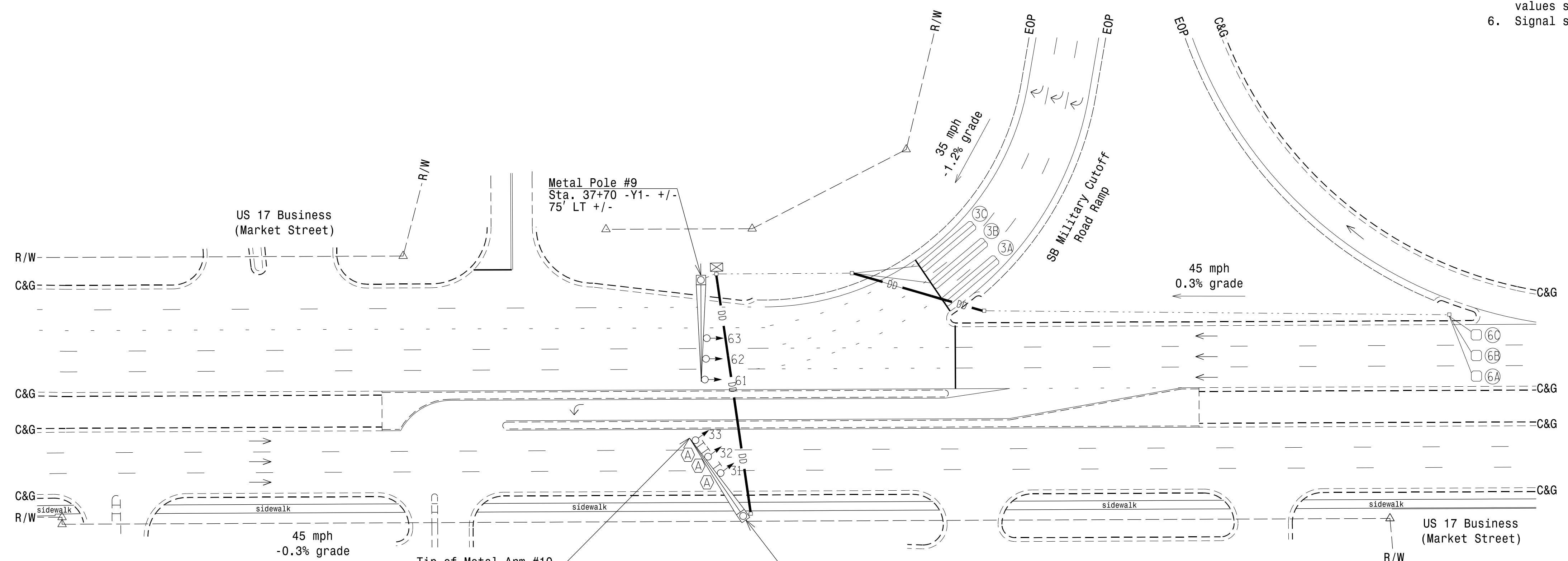
OASIS 2070 LOOP & DETECTOR INSTALLATION CHART

LOOP	SIZE (FT)	DISTANCE FROM STOPBAR (FT)	TURNS	NEW LOOP	DETECTOR PROGRAMMING							
					PHASE	CALLING	EXTENSION	FULL TIME DELAY	STRETCH TIME	DELAY TIME	SYSTEM LOOP	NEW CARD
3A	6X40	0	2-4-2	Y	3	Y	Y	-	-	-	-	Y
3B	6X40	0	2-4-2	Y	3	Y	Y	-	-	-	-	Y
3C	6X40	0	2-4-2	Y	3	Y	Y	-	-	-	-	Y
6A	6X6	300	5	Y	6	Y	Y	-	-	-	-	Y
6B	6X6	300	5	Y	6	Y	Y	-	-	-	-	Y
6C	6X6	300	5	Y	6	Y	Y	-	-	-	-	Y

2 Phase Fully Actuated Wilmington Signal System

NOTES

- Refer to "Roadway Standard Drawings NCDOT" dated January 2012 and "Standard Specifications for Roads and Structures" dated January 2012.
- Do not program signal for late night flashing operation unless otherwise directed by the Engineer.
- Set all detector units to presence mode.
- Locate new cabinet so as not to obstruct sight distance of vehicles turning right on red.
- Maximum times shown in timing chart are for free-run operation only. Coordinated signal system timing values supersede these values.
- Signal system data: Controller Asset #1099.



OASIS 2070E TIMING CHART

FEATURE	PHASE	
	3	6
Min Green 1 *	5	12
Extension 1 *	2.0	6.0
Max Green 1 *	30	100
Yellow Clearance	4.0	4.5
Red Clearance	2.3	1.8
Red Revert	2.0	2.0
Walk 1 *	-	-
Don't Walk 1	-	-
Seconds Per Actuation *	-	1.5
Max Variable Initial *	-	34
Time Before Reduction *	-	15
Time To Reduce *	-	30
Minimum Gap	-	3.0
Recall Mode	-	MIN RECALL
Vehicle Call Memory	-	YELLOW
Dual Entry	-	-
Simultaneous Gap	ON	ON

* These values may be field adjusted. Do not adjust Min Green and Extension times for phases 2 and 6 lower than what is shown. Min Green for all other phases should not be lower than 4 seconds.

LEGEND

	PROPOSED Traffic Signal Head		EXISTING Traffic Signal Head
	PROPOSED Modified Signal Head		EXISTING Modified Signal Head
	PROPOSED Pedestrian Signal Head		EXISTING Pedestrian Signal Head
	PROPOSED Metal Pole with Mastarm		EXISTING Metal Pole with Mastarm
	PROPOSED Inductive Loop Detector		EXISTING Inductive Loop Detector
	PROPOSED Controller & Cabinet		EXISTING Controller & Cabinet
	PROPOSED Junction Box		EXISTING Junction Box
	PROPOSED 2-in Underground Conduit		EXISTING 2-in Underground Conduit
	PROPOSED Right of Way		EXISTING Right of Way
	PROPOSED Directional Arrow		EXISTING Directional Arrow
	PROPOSED "NO TURN ON RED" Sign (R10-11)		EXISTING "NO TURN ON RED" Sign (R10-11)

New Installation - Final Design

DOCUMENT NOT CONSIDERED FINAL UNLESS ALL SIGNATURES COMPLETED

	Prepared for the Offices of: US 17 Business (Market Street) at Southbound SR 1409 (Military Cutoff Road) Ramp Division 03 New Hanover County Wilmington		
	PLAN DATE: April 2017 PREPARED BY: AM Encarnacion	REVIEWED BY: MB Toth REVIEWED BY:	

ATKINS 1616 EAST MILLBROOK ROAD, SUITE 160
 RALEIGH, NORTH CAROLINA 27609
 (919) 876-8888 NOBEE'S #F-0326

06-JUN-2017 13:48
 D:\P\proj\01710\01710\off\c\cur\100053591 - U-4751 Military CutoffRd2-Signal (s) (as) (gn) (03-1099).dgn
 enc0386 - AT US95021