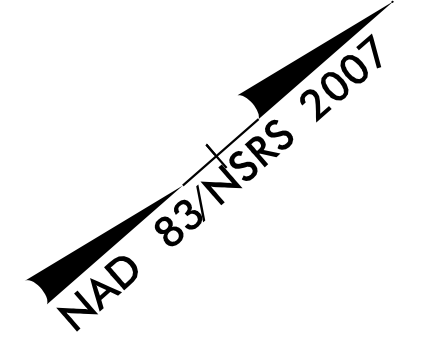
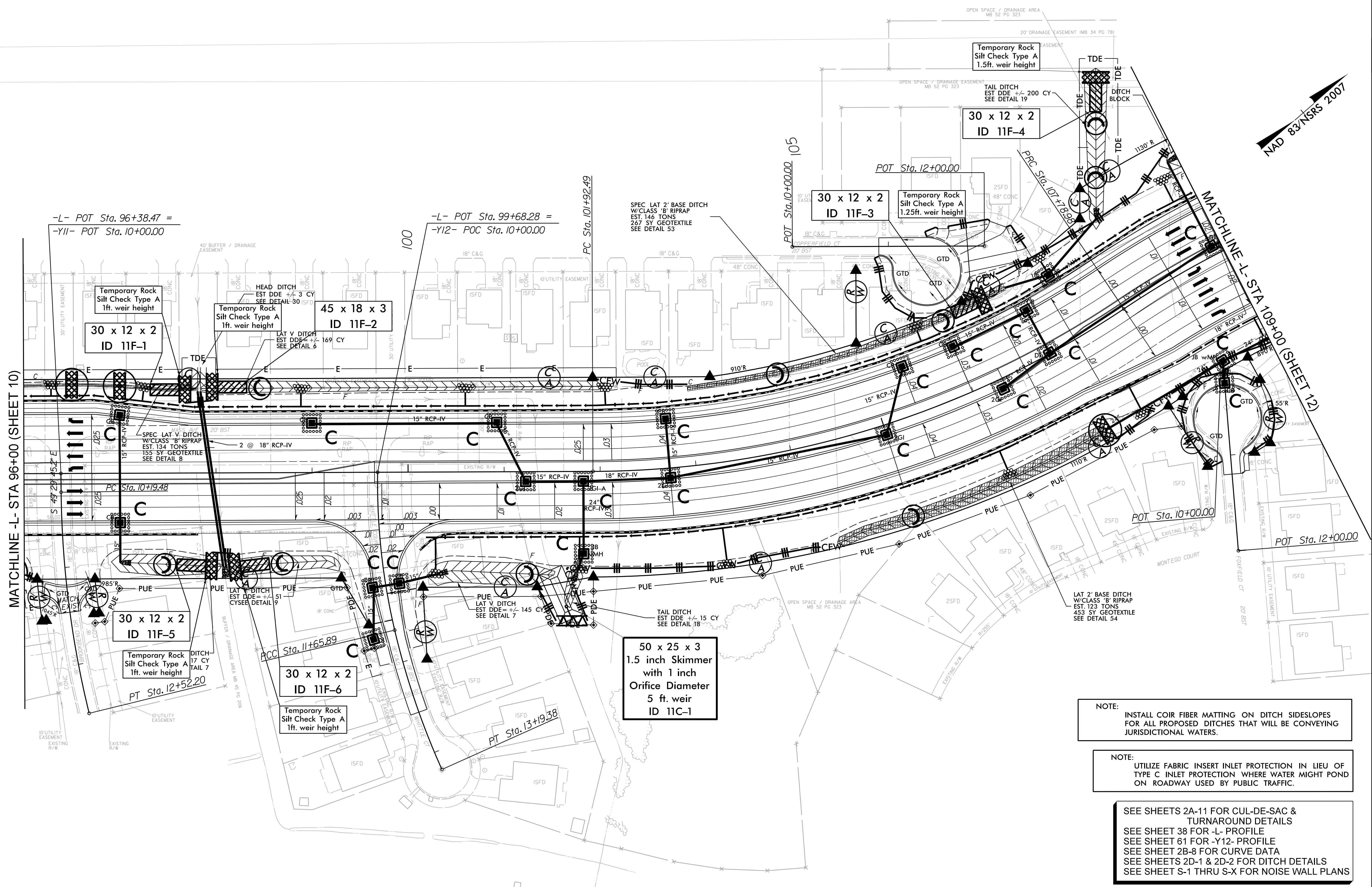


10



MATCHLINE -L- STA 96+00 (SHEET 10)

MATCHLINE -L- STA 109+00 (SHEET 12)

NOTE:  
 INSTALL COIR FIBER MATTING ON DITCH SIDESLOPES FOR ALL PROPOSED DITCHES THAT WILL BE CONVEYING JURISDICTIONAL WATERS.

NOTE:  
 UTILIZE FABRIC INSERT INLET PROTECTION IN LIEU OF TYPE C INLET PROTECTION WHERE WATER MIGHT POND ON ROADWAY USED BY PUBLIC TRAFFIC.

SEE SHEETS 2A-11 FOR CUL-DE-SAC & TURNAROUND DETAILS  
 SEE SHEET 38 FOR -L- PROFILE  
 SEE SHEET 61 FOR -Y12- PROFILE  
 SEE SHEET 2B-8 FOR CURVE DATA  
 SEE SHEETS 2D-1 & 2D-2 FOR DITCH DETAILS  
 SEE SHEET S-1 THRU S-X FOR NOISE WALL PLANS

6/2/2017 R:\Environmental\Design\U4751\EC\_psh40.dgn