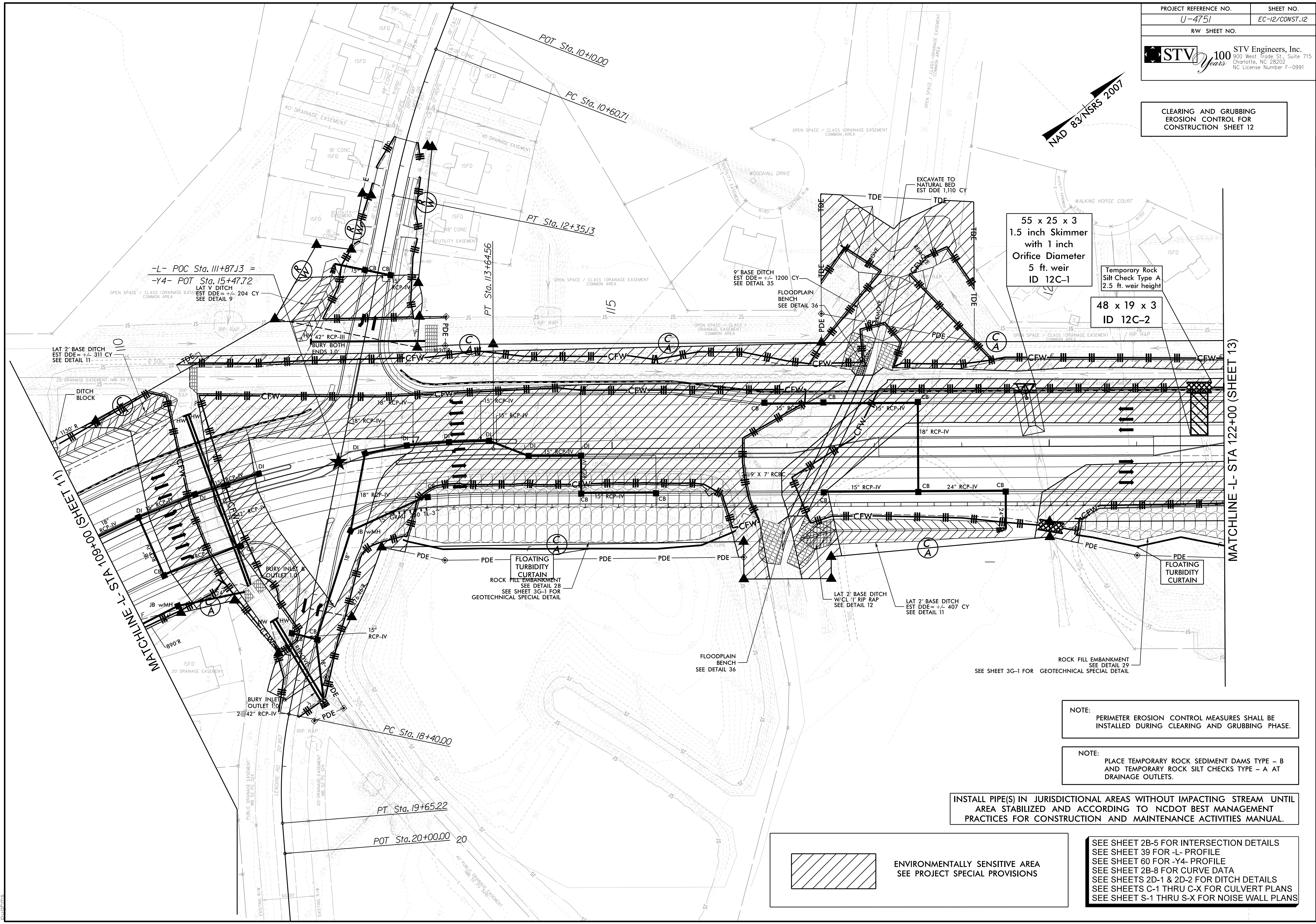
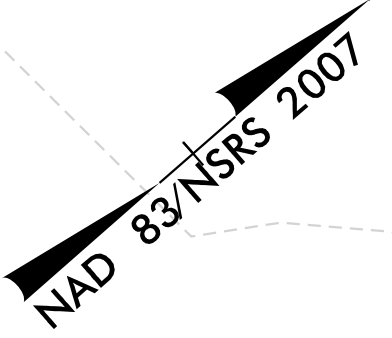


**CLEARING AND GRUBBING
 EROSION CONTROL FOR
 CONSTRUCTION SHEET 12**



MATCHLINE - STA 109+00 (SHEET 11)

MATCHLINE -L- STA 122+00 (SHEET 13)

NOTE:
 PERIMETER EROSION CONTROL MEASURES SHALL BE INSTALLED DURING CLEARING AND GRUBBING PHASE.

NOTE:
 PLACE TEMPORARY ROCK SEDIMENT DAMS TYPE - B AND TEMPORARY ROCK SILT CHECKS TYPE - A AT DRAINAGE OUTLETS.

INSTALL PIPE(S) IN JURISDICTIONAL AREAS WITHOUT IMPACTING STREAM UNTIL AREA STABILIZED AND ACCORDING TO NCDOT BEST MANAGEMENT PRACTICES FOR CONSTRUCTION AND MAINTENANCE ACTIVITIES MANUAL.

 ENVIRONMENTALLY SENSITIVE AREA
 SEE PROJECT SPECIAL PROVISIONS

SEE SHEET 2B-5 FOR INTERSECTION DETAILS
 SEE SHEET 39 FOR -L- PROFILE
 SEE SHEET 60 FOR -Y4- PROFILE
 SEE SHEET 2B-8 FOR CURVE DATA
 SEE SHEETS 2D-1 & 2D-2 FOR DITCH DETAILS
 SEE SHEETS C-1 THRU C-X FOR CULVERT PLANS
 SEE SHEET S-1 THRU S-X FOR NOISE WALL PLANS