

PROJECT REFERENCE NO. U-4751		SHEET NO. 7	
RW SHEET NO.		HYDRAULICS ENGINEER	
ROADWAY DESIGN ENGINEER	HYDRAULICS ENGINEER		
DOCUMENT NOT CONSIDERED FINAL UNLESS ALL SIGNATURES COMPLETED			

MATCHLINE -Y1RPB- STA 19+50
(SHEET 6)

MATCHLINE -L- STA 49+00 (SHEET 6)

MATCHLINE -L- STA 58+00 (SHEET 8)

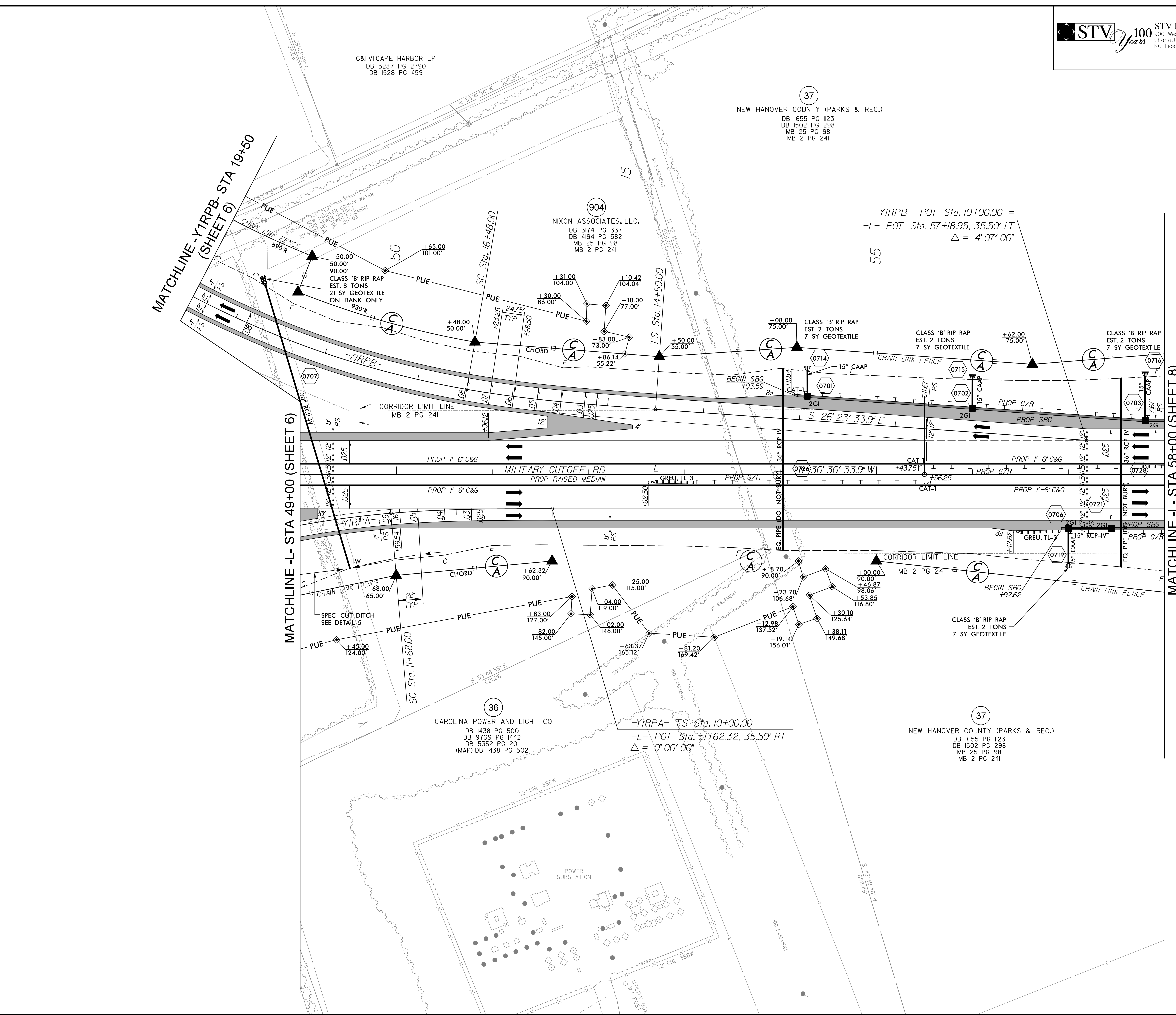
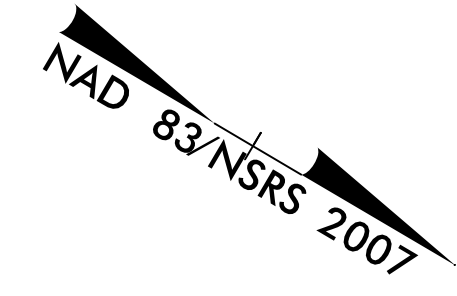
G&I CAPE HARBOR LP
DB 5287 PG 2790
DB 1528 PG 459

37
NEW HANOVER COUNTY (PARKS & REC.)
DB 1655 PG 1123
DB 1502 PG 298
MB 25 PG 98
MB 2 PG 241

904
NIXON ASSOCIATES, LLC.
DB 3174 PG 337
DB 4194 PG 582
MB 25 PG 98
MB 2 PG 241

36
CAROLINA POWER AND LIGHT CO
DB 1438 PG 500
DB 9765 PG 1442
DB 5352 PG 201
(MAP) DB 1438 PG 502

37
NEW HANOVER COUNTY (PARKS & REC.)
DB 1655 PG 1123
DB 1502 PG 298
MB 25 PG 98
MB 2 PG 241



SEE SHEET 36 FOR -L- PROFILE
SEE SHEET 49 FOR -Y1RPA- PROFILE
SEE SHEET 51 FOR -Y1RPB- PROFILE
SEE SHEET 2B-8 FOR CURVE DATA
SEE SHEETS 2D-1 & 2D-2 FOR DITCH DETAILS

7/14/2017
R:\V\2017\Proj\N\Proj\SH\T\U4751_RDY_psh07.dgn
C:\Users\ecomb\OneDrive\Documents\ecomb\ec