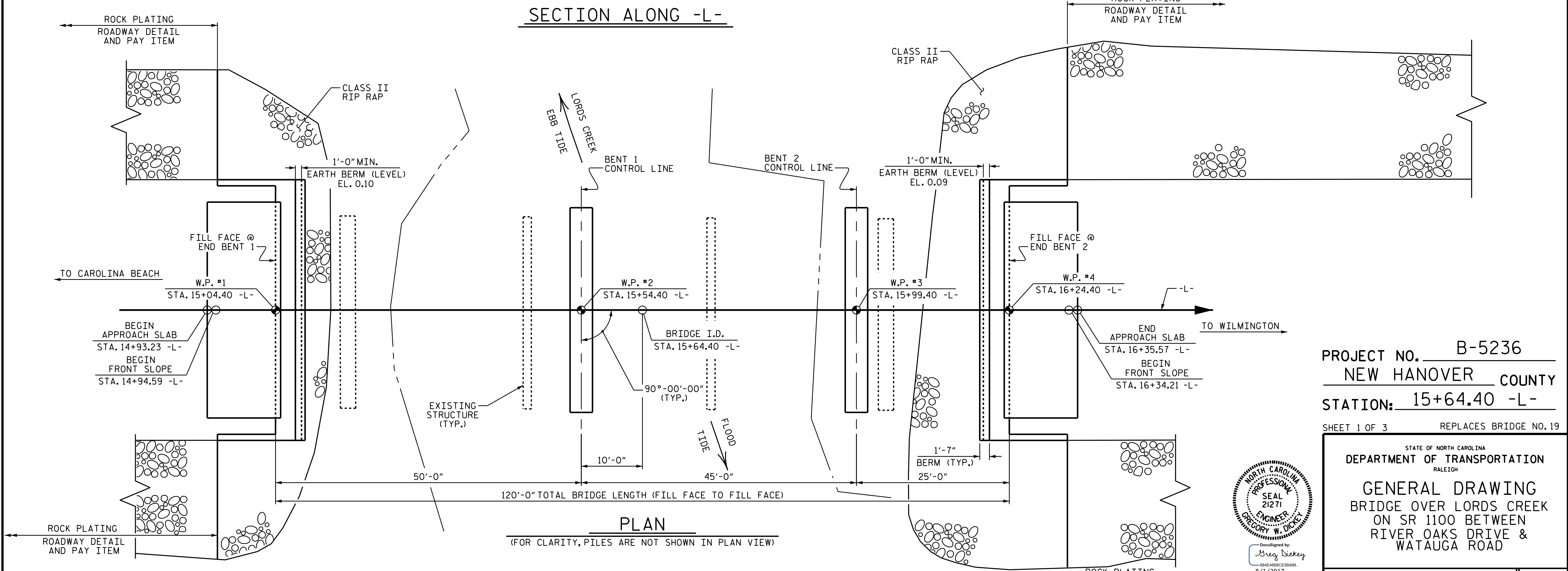
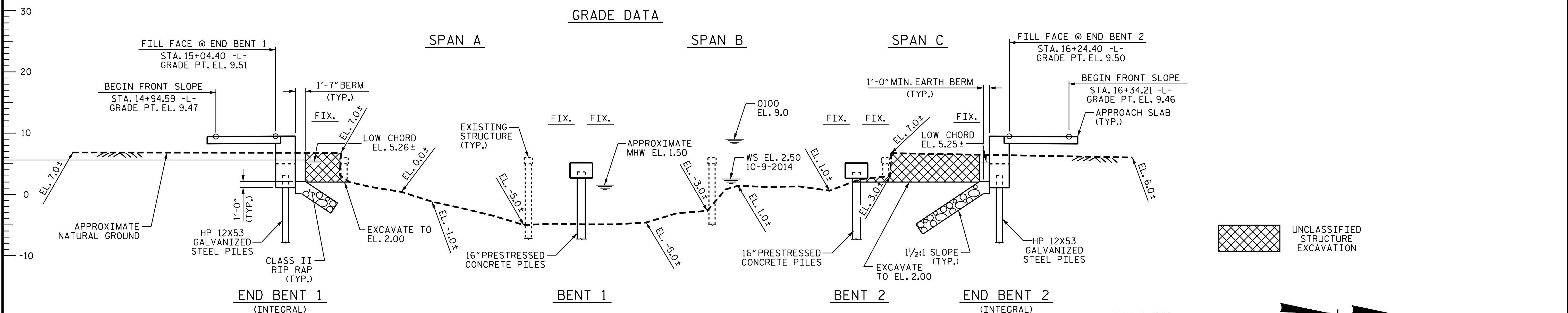


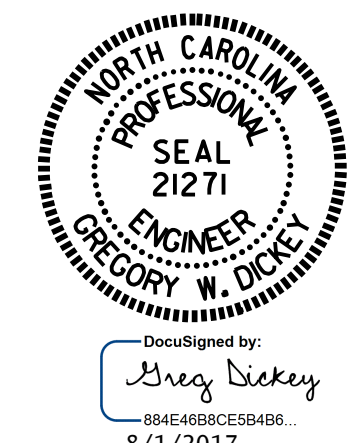
1.0749% Δ -1.0353%
 PI STA. 15+60.00
 EL. = 10.48'
 VC = 326'

GRADE DATA



PROJECT NO. B-5236
 NEW HANOVER COUNTY
 STATION: 15+64.40 -L-
 SHEET 1 OF 3 REPLACES BRIDGE NO. 19

STATE OF NORTH CAROLINA
 DEPARTMENT OF TRANSPORTATION
 RALEIGH
GENERAL DRAWING
 BRIDGE OVER LORDS CREEK
 ON SR 1100 BETWEEN
 RIVER OAKS DRIVE &
 WATAUGA ROAD



DRAWN BY : H. B. DESAI DATE : 03/17
 CHECKED BY : M. K. BEARD DATE : 03/17
 DESIGN ENGINEER OF RECORD : A. K. PATEL DATE : 06/17

DOCUMENT NOT CONSIDERED
 FINAL UNLESS ALL
 SIGNATURES COMPLETED

REVISIONS						SHEET NO.
NO.	BY:	DATE:	NO.	BY:	DATE:	S-1
1			3			TOTAL SHEETS
2			4			35