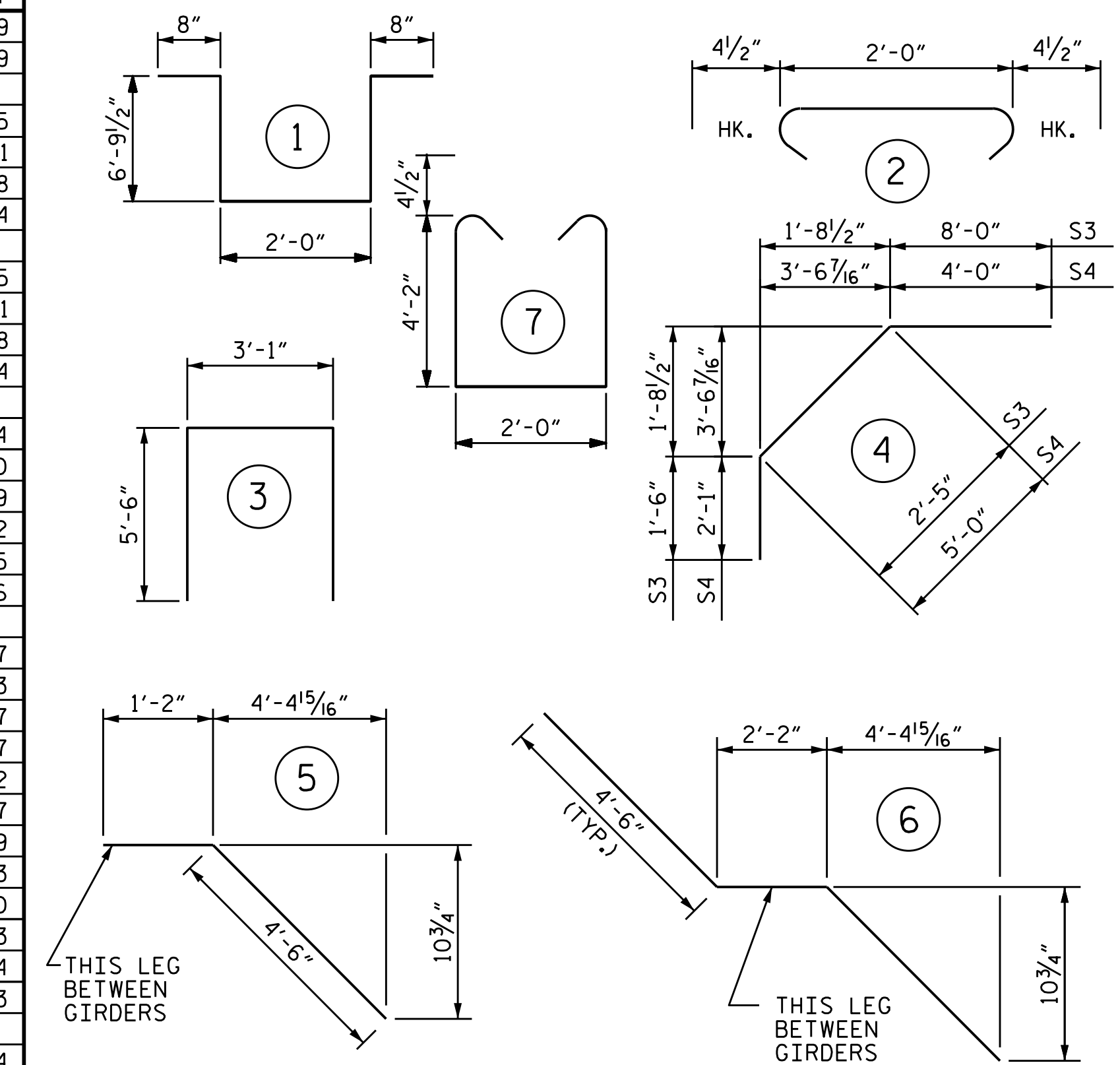


BAR TYPES



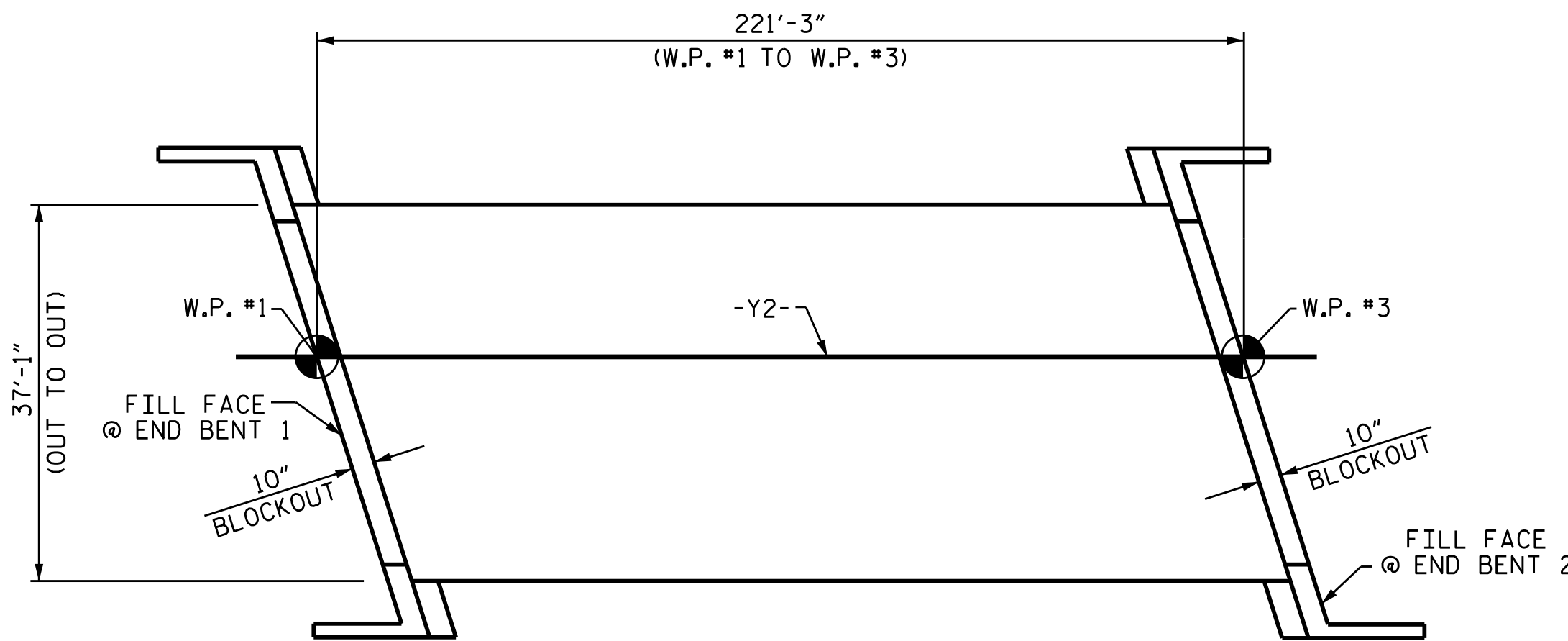
ALL BAR DIMENSIONS ARE OUT TO OUT.

— SUPERSTRUCTURE BILL OF MATERIAL —			
	CLASS AA CONCRETE	REINFORCING STEEL	EPOXY COATED REINFORCING STEEL
	(CU. YDS.)	(LBS.)	(LBS.)
POUR #1	117.4		
POUR #2	155.5	22,263	26,594
POUR #3	71.4		
TOTALS**	344.3	22,263	26,594

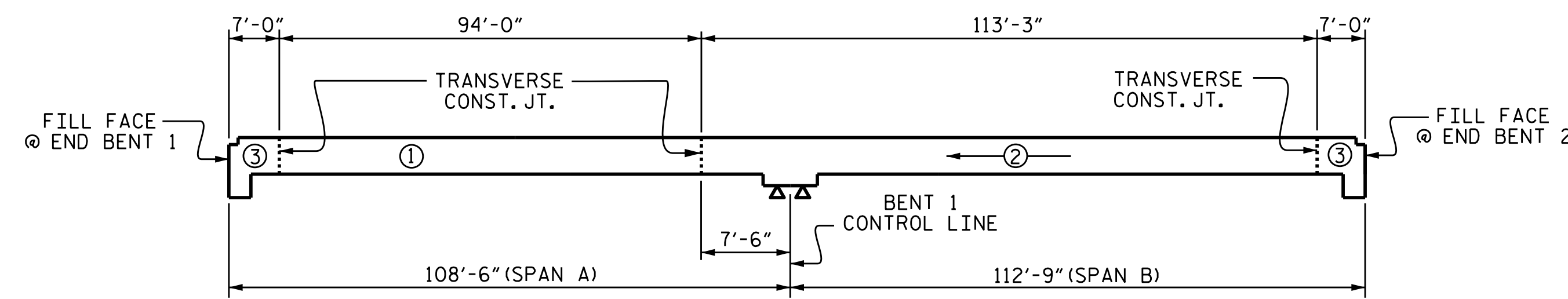
**QUANTITIES FOR PARAPET AND END POSTS ARE NOT INCLUDED

REINFORCING BAR SCHEDULE					
BAR	NO.	SIZE	TYPE	LENGTH	WEIGHT
* A1	342	#5	STR	36'-9"	13109
A2	342	#5	STR	36'-9"	13109
* A101	4	#5	STR	29'-11"	125
* A102	4	#5	STR	21'-11"	91
* A103	4	#5	STR	13'-10"	58
* A104	4	#5	STR	5'-9"	24
A201	4	#5	STR	29'-11"	125
A202	4	#5	STR	21'-11"	91
A203	4	#5	STR	13'-10"	58
A204	4	#5	STR	5'-9"	24
* B1	8	#5	STR	56'-9"	474
* B2	194	#5	STR	22'-7"	4570
* B3	100	#4	STR	29'-4"	1959
* B4	98	#5	STR	37'-0"	3782
* B5	48	#5	STR	33'-3"	1665
B6	116	#5	STR	56'-6"	6836
K1	32	#4	STR	19'-6"	417
K2	12	#4	STR	5'-4"	43
K3	6	#4	STR	6'-10"	27
K4	60	#4	STR	8'-5"	337
K5	6	#4	STR	7'-11"	32
K6	4	#4	STR	2'-6"	7
K7	4	#4	STR	3'-3"	9
K8	20	#4	STR	4'-0"	53
K9	4	#4	STR	3'-10"	10
K10	6	#4	STR	5'-10"	23
K11	14	#4	6	11'-2"	104
K12	14	#4	5	5'-8"	53
S1	138	#4	2	2'-9"	254
S2	44	#4	3	14'-1"	414
* S3	48	#4	4	11'-11"	382
* S4	48	#4	4	11'-1"	355
U1	18	#4	1	16'-1"	193
U2	6	#4	7	11'-1"	44
REINFORCING STEEL				LBS.	22,263
* EPOXY COATED REINFORCING STEEL				LBS.	26,594

GROOVING BRIDGE FLOORS	
APPROACH SLABS	736 SQ.FT.
BRIDGE DECK	5,706 SQ.FT.
TOTAL	6,442 SQ.FT.

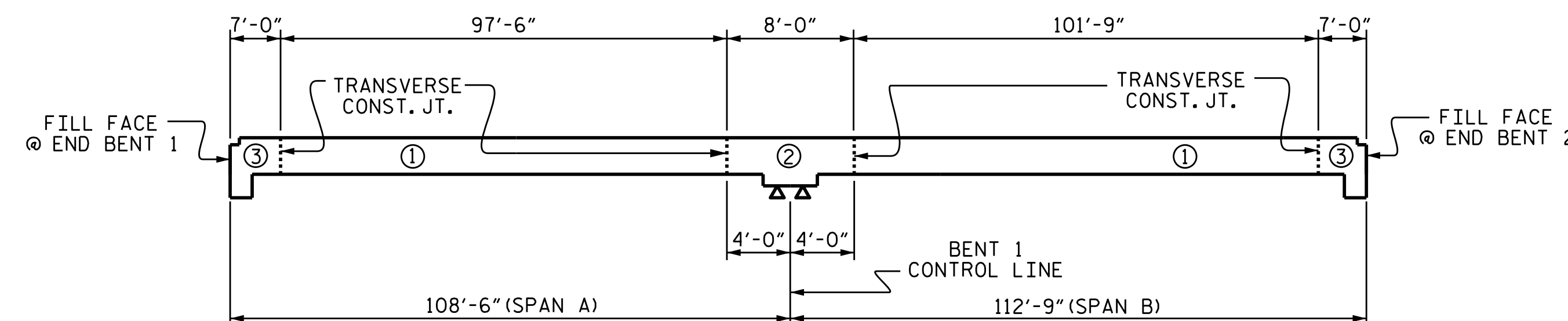


LAYOUT FOR COMPUTING AREA REINFORCED CONCRETE DECK SLAB (SQ. FT. = 8,205)



POUR SEQUENCE

① = INDICATES POUR NUMBER AND DIRECTION OF POUR



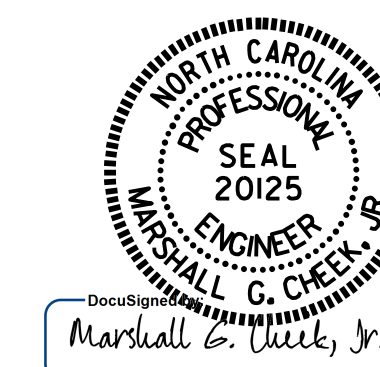
OPTIONAL POUR SEQUENCE

POUR ② CAN NOT BE STARTED UNTIL BOTH ADJACENT ①POURS REACH A MINIMUM OF 3,000 PSI.

SUPERSTRUCTURE REINFORCING STEEL LENGTHS ARE BASED ON THE FOLLOWING MINIMUM SPLICE LENGTHS

BAR SIZE	SUPERSTRUCTURE EXCEPT APPROACH SLABS, PARAPET, AND BARRIER RAIL		APPROACH SLABS		PARAPET AND BARRIER RAIL
	EPOXY COATED	UNCOATED	EPOXY COATED	UNCOATED	
#4	2'-0"	1'-9"	2'-0"	1'-9"	2'-9"
#5	2'-6"	2'-2"	2'-6"	2'-2"	3'-5"
#6	3'-0"	2'-7"	3'-10"	2'-7"	4'-4"
#7	5'-3"	3'-6"			
#8	6'-10"	4'-7"			

PROJECT NO. U-2579C
 FORSYTH COUNTY
 STATION: 21+27.27 -Y2-



STATE OF NORTH CAROLINA
 DEPARTMENT OF TRANSPORTATION
 RALEIGH
 SUPERSTRUCTURE
 BILL OF MATERIAL

DOCUMENT NOT CONSIDERED FINAL UNLESS ALL SIGNATURES COMPLETED

REVISIONS						SHEET NO.
NO.	BY:	DATE:	NO.	BY:	DATE:	S2-21
1			3			TOTAL SHEETS 30
2			4			

DRAWN BY : N.D'AIUTO DATE: 1/26/16
 CHECKED BY : J.K.BOWLES DATE: 3/31/16
 DESIGN ENGINEER OF RECORD : J.K.BOWLES DATE: 3/31/16