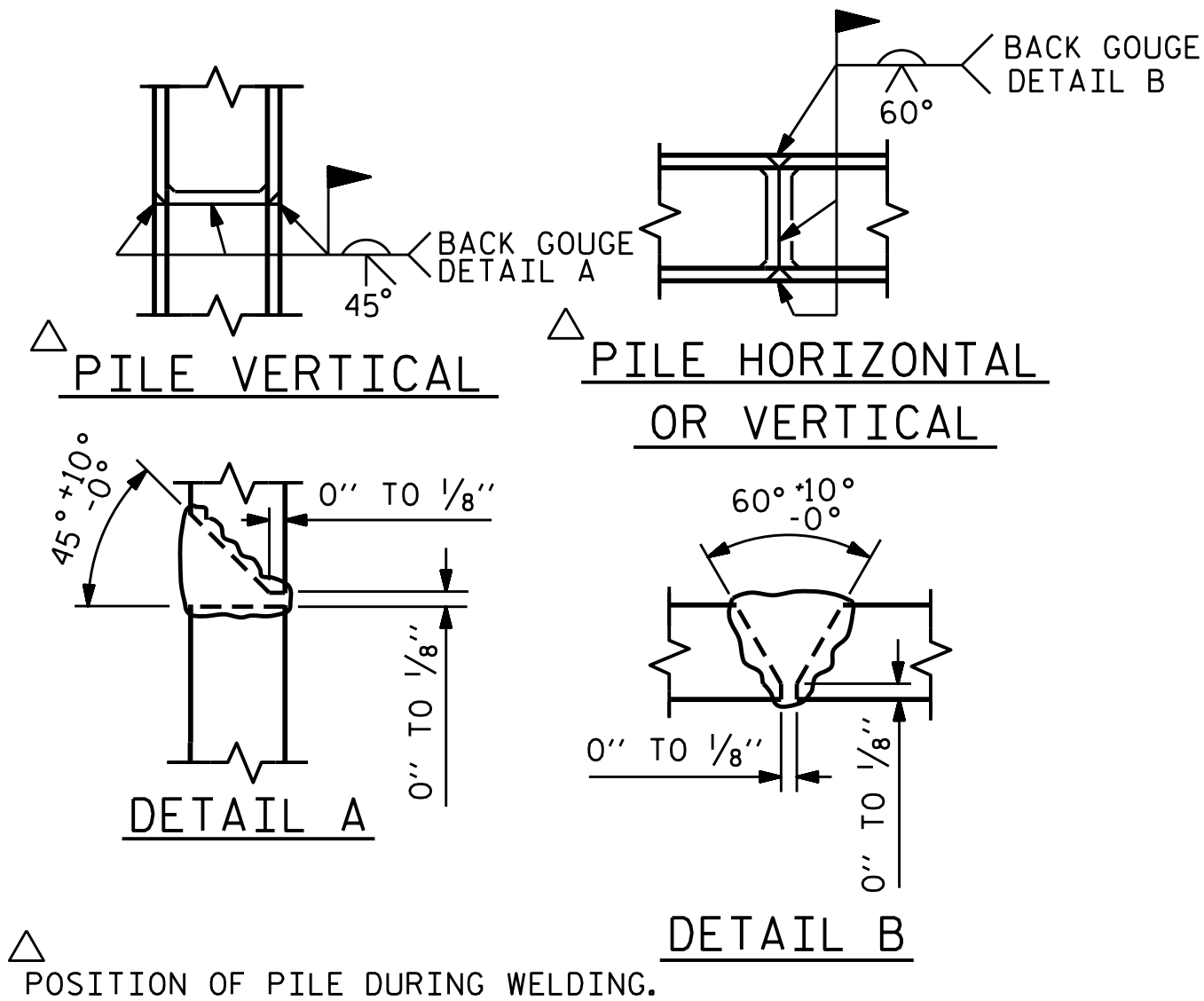


BAGGED STONE AND PIPE SHALL BE PLACED IMMEDIATELY AFTER COMPLETION OF END BENT EXCAVATION. PIPE MAY BE EITHER CONCRETE, CORRUGATED STEEL, CORRUGATED ALUMINUM ALLOY, OR CORRUGATED PLASTIC. PERFORATED PIPE WILL NOT BE ALLOWED.

BAGGED STONE SHALL REMAIN IN PLACE UNTIL THE ENGINEER DIRECTS THAT IT BE REMOVED. THE CONTRACTOR SHALL REMOVE AND DISPOSE OF SILT ACCUMULATIONS AT BAGGED STONE WHEN SO DIRECTED BY THE ENGINEER. BAGS SHALL BE REMOVED AND REPLACED WHENEVER THE ENGINEER DETERMINES THAT THEY HAVE DETERIORATED AND LOST THEIR EFFECTIVENESS.

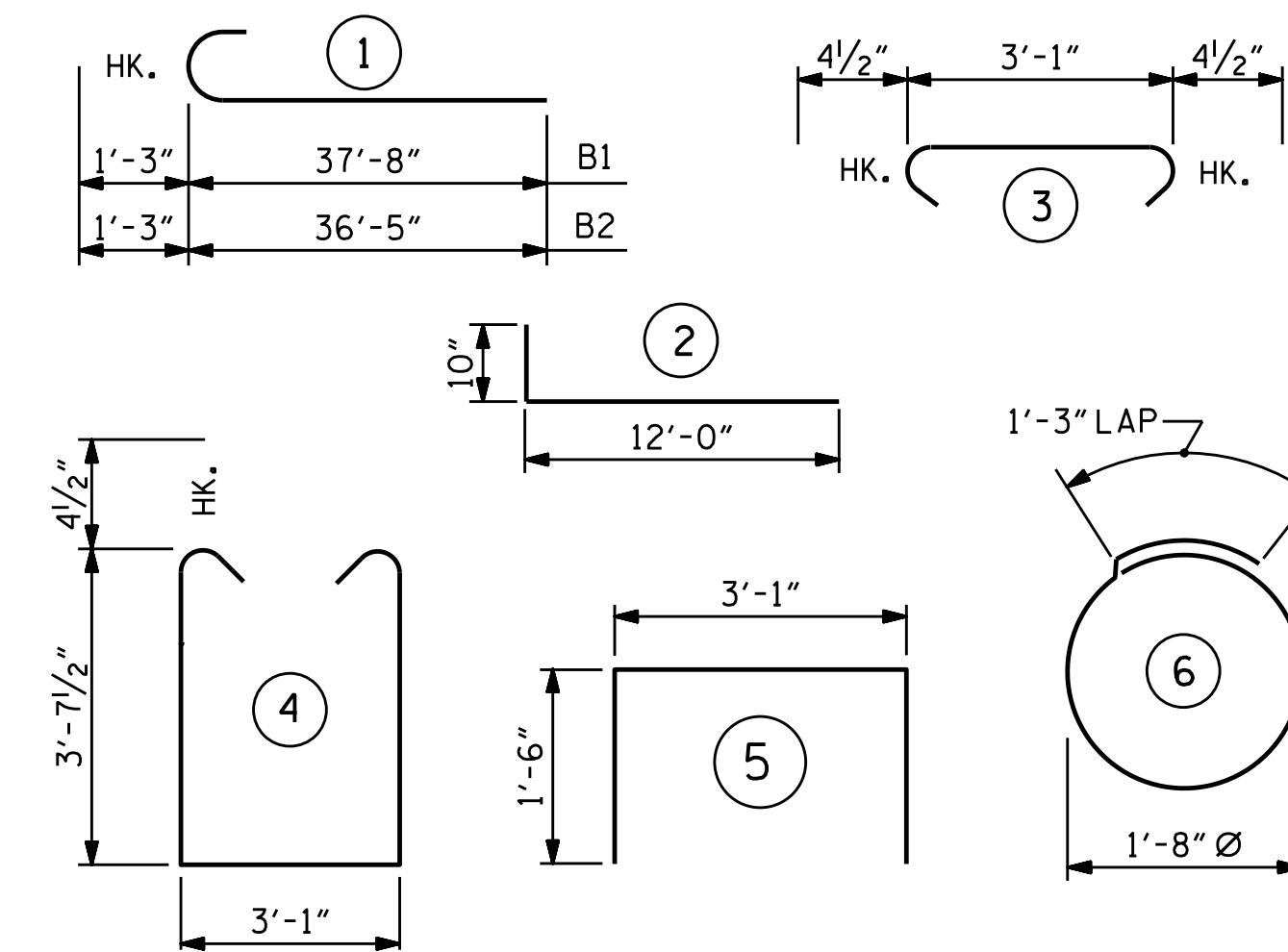
NO SEPARATE PAYMENT WILL BE MADE FOR THIS WORK AND THE ENTIRE COST OF THIS WORK SHALL BE INCLUDED IN THE UNIT CONTRACT PRICE BID FOR THE SEVERAL PAY ITEMS.

### TEMPORARY DRAINAGE AT END BENT



### PILE SPLICE DETAILS

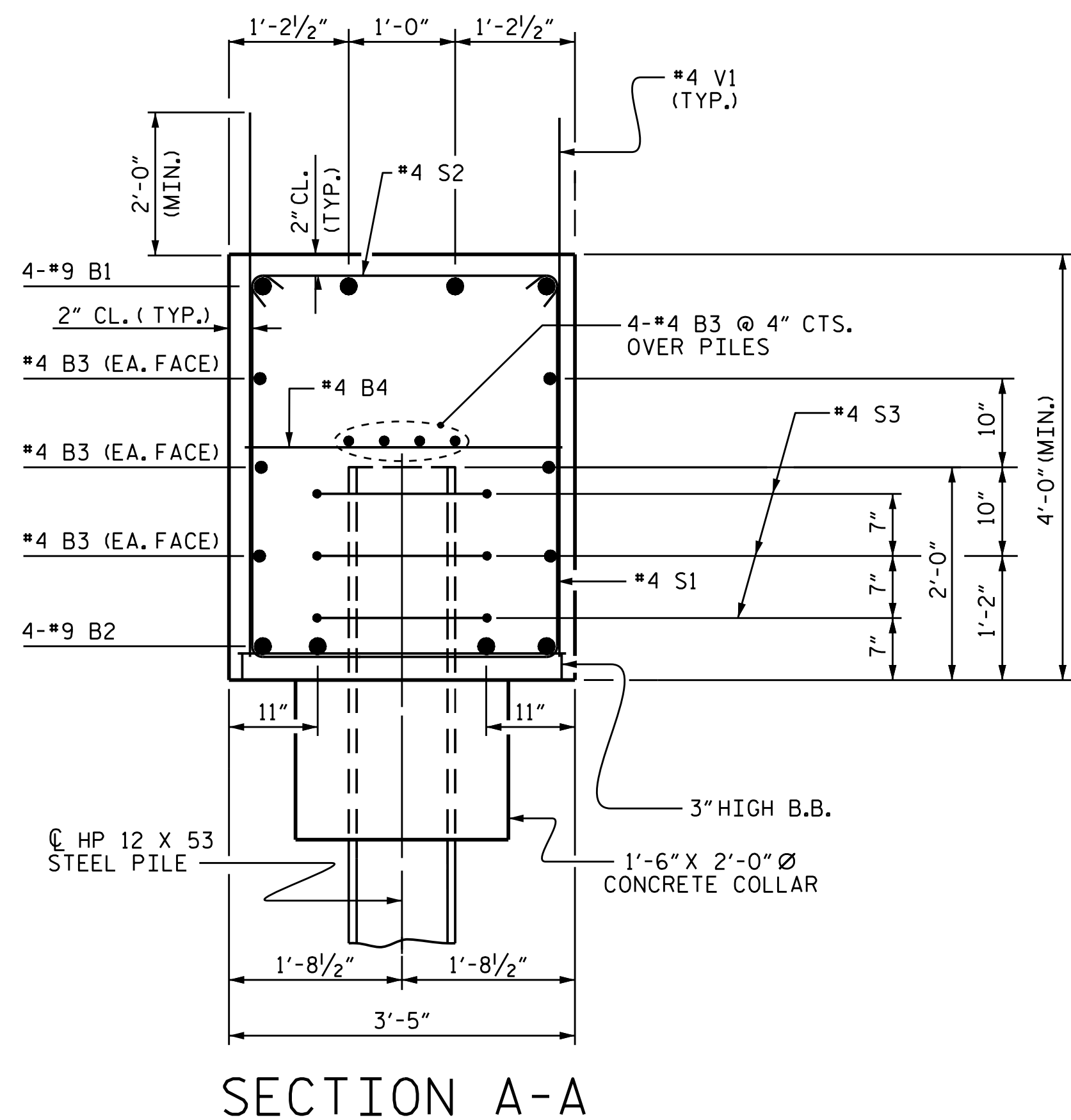
### BAR TYPES



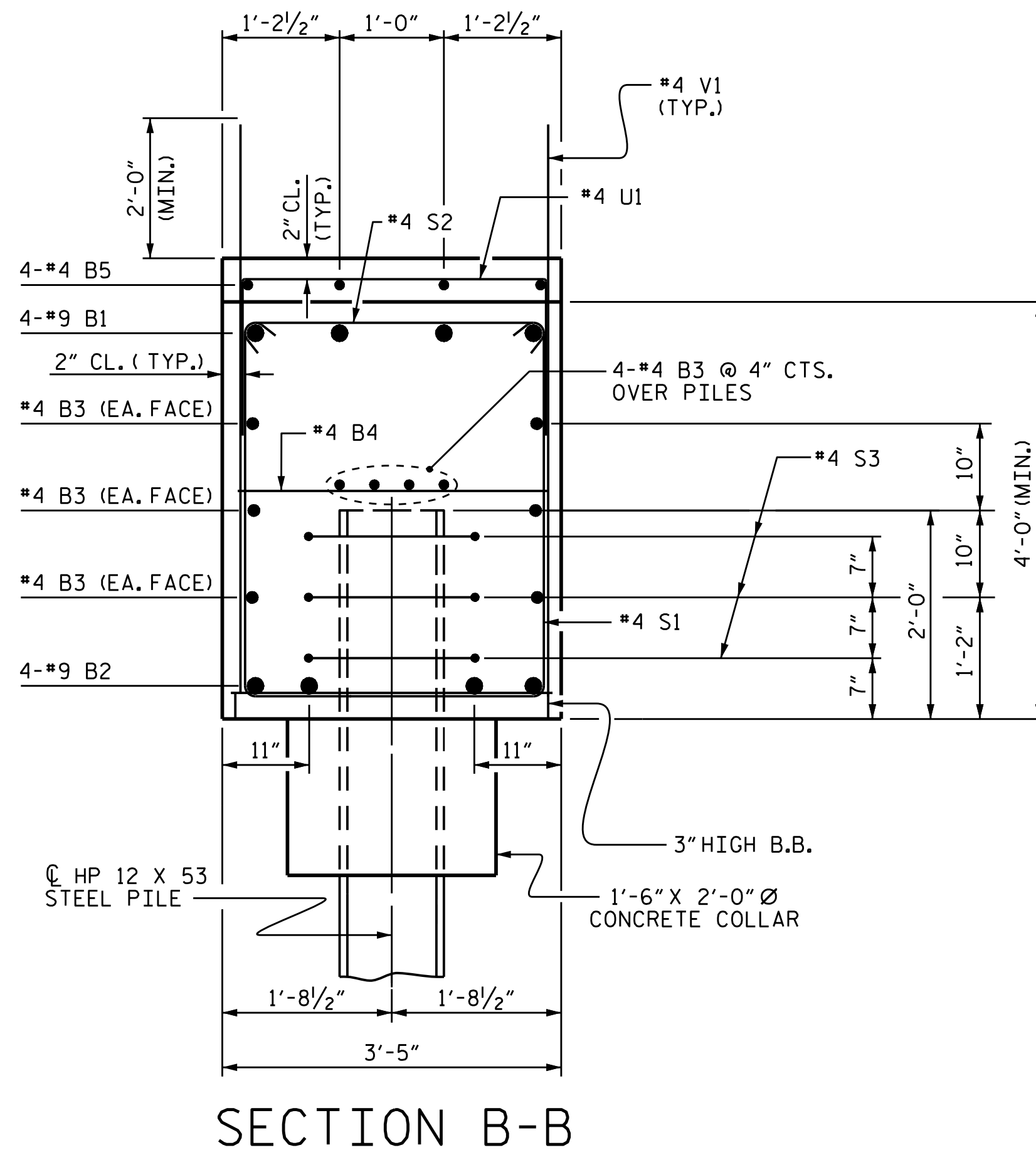
ALL BAR DIMENSIONS ARE OUT TO OUT.

### BILL OF MATERIAL

END BENT 2					
BAR	NO.	SIZE	TYPE	LENGTH	WEIGHT
B1	8	#9	1	38'-11"	1059
B2	8	#9	1	37'-8"	1025
B3	30	#4	STR	23'-10"	478
B4	17	#4	STR	3'-1"	35
B5	4	#4	STR	13'-8"	37
H1	88	#5	2	12'-10"	1178
K1	28	#4	STR	3'-6"	65
S1	86	#4	4	11'-1"	637
S2	86	#4	3	3'-10"	220
S3	33	#4	6	6'-6"	143
U1	10	#4	5	6'-1"	41
V1	88	#4	STR	6'-0"	353
V2	68	#5	STR	10'-9"	762
REINFORCING STEEL					LBS. 6,033
CLASS A CONCRETE					
POUR #1 CAP, LOWER PART OF WINGS, & COLLARS				C.Y.	40.4
POUR #2 UPPER PART OF WINGS				C.Y.	8.0
TOTAL				C.Y.	48.4
HP 12 X 53 STEEL PILES					
NO.: 11				LIN. FT.	415
PILE DRIVING EQUIPMENT SETUP FOR HP 12 X 53 STEEL PILES					
				EACH	11



SECTION A-A



SECTION B-B

PROJECT NO. U-2579C  
 FORSYTH COUNTY  
 STATION: 29+24.97 -Y1-  
 SHEET 3 OF 3



STATE OF NORTH CAROLINA  
 DEPARTMENT OF TRANSPORTATION  
 RALEIGH

SUBSTRUCTURE  
 INTEGRAL  
 END BENT 2

DRAWN BY: N.D. AIUTO DATE: 4/6/16  
 CHECKED BY: K.D. LAYNE DATE: 4/14/16  
 DESIGN ENGINEER OF RECORD: H.A. LOCKLEAR DATE: 6/2017

DOCUMENT NOT CONSIDERED FINAL UNLESS ALL SIGNATURES COMPLETED

REVISIONS				SHEET NO.	
NO.	BY:	DATE:	NO.	BY:	DATE:
1			3		
2			4		

S1-28  
 TOTAL SHEETS  
 32