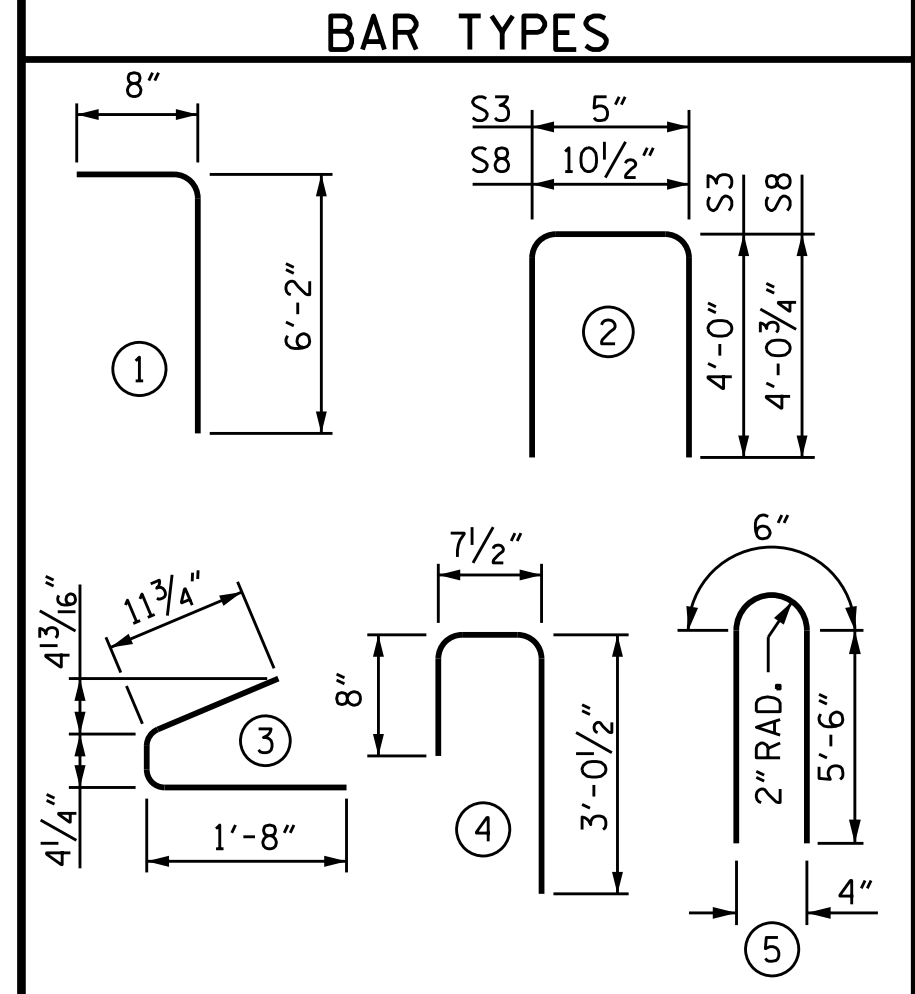


0.6" Ø L. R. GRADE 270 STRANDS		
AREA (SQUARE INCHES)	ULTIMATE STRENGTH (LBS. PER STRAND)	APPLIED PRESTRESS (LBS. PER STRAND)
0.217	58,600	43,950

REINFORCING STEEL FOR ONE GDR					
BAR	NUMBER	SIZE	TYPE	LENGTH	WEIGHT
S1	170	#4	1	6'-10"	776
S2	32	#5	1	6'-10"	228
S3	14	#4	2	8'-5"	79
S4	92	#4	3	3'-0"	184
S6	202	#5	4	4'-4"	913
* S7	30	#5	STR	3'-8"	115
S8	2	#5	2	9'-0"	19
S9	30	#5	STR	3'-3"	102
S10	2	#3	STR	1'-10"	1
S11	8	#5	5	11'-6"	96
S12	16	#4	STR	8'-0"	86

\* NOTE: S7 BARS SHALL BE BENT BEFORE SHIPMENT. HEAT BENDING SHALL NOT BE ALLOWED.

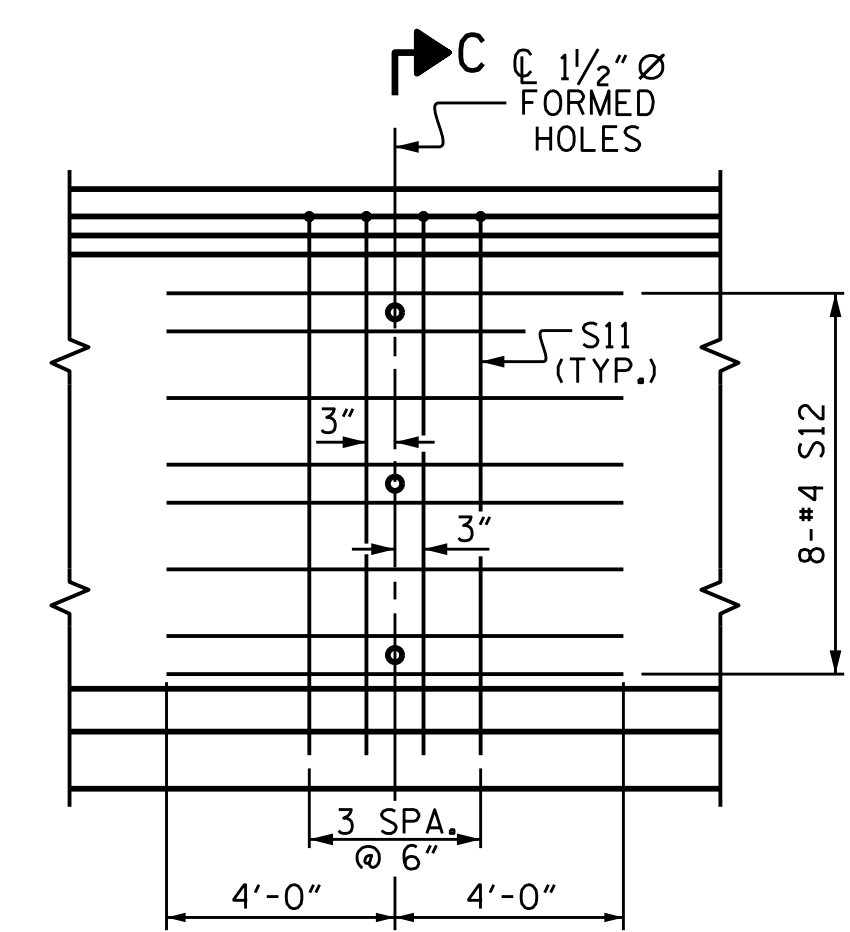


ALL BAR DIMENSIONS ARE OUT TO OUT

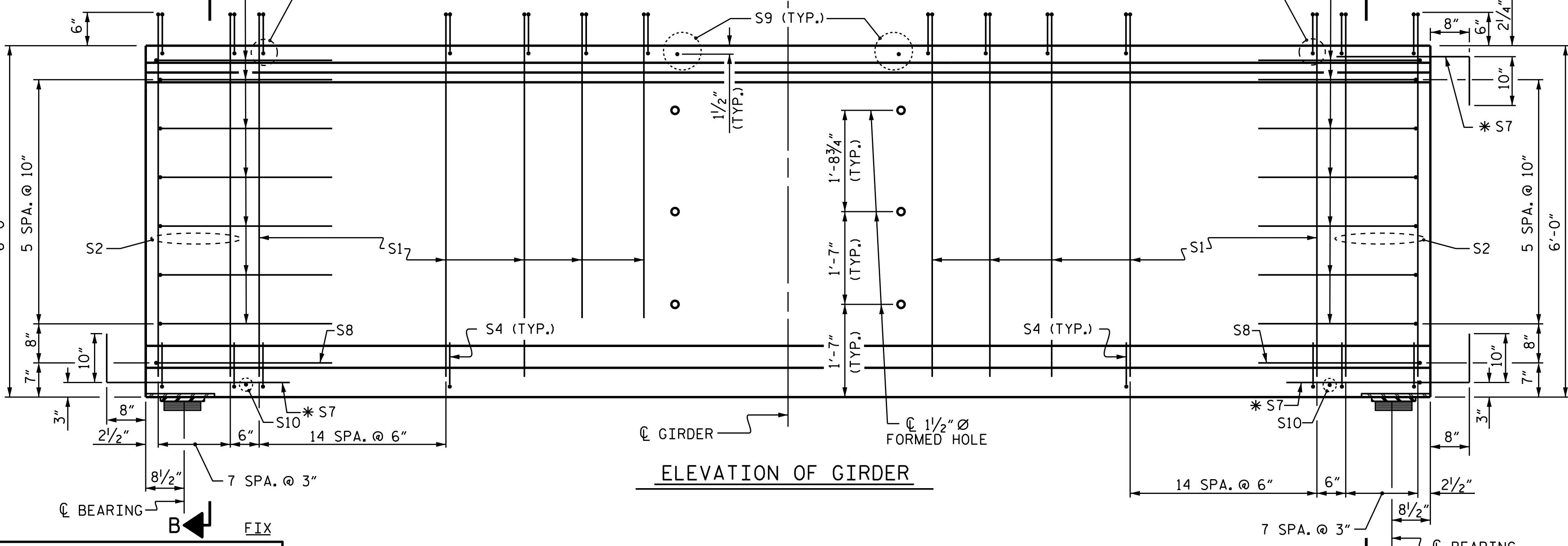
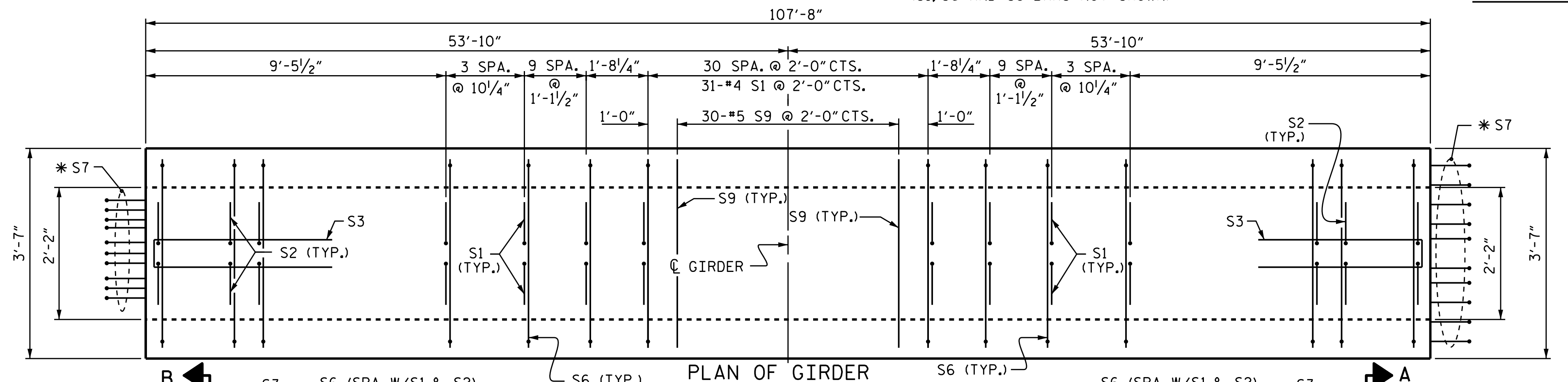
QUANTITIES FOR ONE GIRDER		
REINFORCING STEEL	9,500 PSI CONCRETE	0.6" Ø L.R. STRANDS
LBS.	C.Y.	No.
2599	23.1	46

GIRDERS REQUIRED		
NUMBER	LENGTH	TOTAL LENGTH
6	107'-8"	646'-0"

- DEBONDING LEGEND
- FULLY BONDED STRANDS
  - ◊ STRANDS DEBONDED FOR 10'-0" FROM END OF GIRDER
  - ⊙ STRANDS DEBONDED FOR 12'-0" FROM END OF GIRDER



PARTIAL ELEVATION  
SHOWING INTERMEDIATE STEEL DIAPHRAGM REINFORCING STEEL FOR SPAN B GIRDERS (2 LOCATIONS PER GIRDER)



ASSEMBLED BY : J.P. MCCARTHA DATE : 5/3/16  
 CHECKED BY : H.A. LOCKLEAR DATE : 8/25/16  
 DRAWN BY : EEM 2/6/97 MAA/GM  
 CHECKED BY : VAP 2/6/97 REV. 6/13 MAA/GM  
 REV. 1/15 MAA/TMG

DESIGN ENGINEER OF RECORD:  
 H.A. LOCKLEAR DATE : 6/2017

DOCUMENT NOT CONSIDERED  
 FINAL UNLESS ALL  
 SIGNATURES COMPLETED



PROJECT NO. U-2579C  
 FORSYTH COUNTY  
 STATION: 29+24.97 -Y1-

SHEET 2 OF 3  
 DEPARTMENT OF TRANSPORTATION  
 RALEIGH  
 STANDARD  
 72" PRESTRESSED CONCRETE  
 MODIFIED BULB TEE  
 CONTINUOUS FOR LIVE LOAD  
 SPAN B

REVISIONS				SHEET NO.	
NO.	BY:	DATE:	NO.	BY:	DATE:
1			3		
2			4		