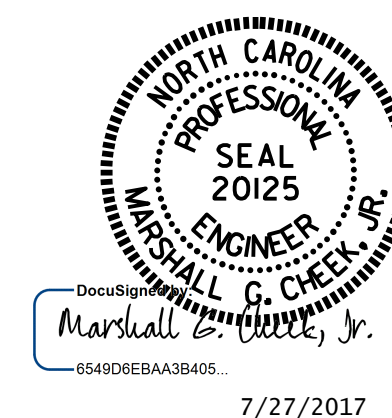


LONG CHORD LAYOUT

| ANGLES | | | |
|------------|-------------|-------------|-------------|
| LONG CHORD | | SHORT CHORD | |
| L1 | 91°-37'-52" | S1 | 91°-58'-16" |
| | | S2 | 91°-16'-58" |

| OFFSETS | |
|---------|-----------------------------------|
| D1 | 7 ¹⁵ / ₁₆ " |
| D2 | 0 ¹ / ₄ " |

PROJECT NO. U-2579C
FORSYTH COUNTY
 STATION: 409+03.84 -L-
29+24.97 -Y1-
 SHEET 2 OF 4



STATE OF NORTH CAROLINA
 DEPARTMENT OF TRANSPORTATION
 RALEIGH
GENERAL DRAWING
 FOR BRIDGE OVER WINSTON-SALEM
 NORTHERN BELTWAY (FUTURE I-74)
 ON US 311 (NEW WALKERTOWN RD.)
 BETWEEN SR 2393 AND SR 2381

DRAWN BY : K. D. LAYNE DATE : 4/27/16
 CHECKED BY : J.K. BOWLES DATE : 9/8/16
 DESIGN ENGINEER OF RECORD: H.A. LOCKLEAR DATE : 6/2017

DOCUMENT NOT CONSIDERED
 FINAL UNLESS ALL
 SIGNATURES COMPLETED

| REVISIONS | | | | | | SHEET NO. | |
|-----------|-----|-------|-----|-----|-------|--------------|----|
| NO. | BY: | DATE: | NO. | BY: | DATE: | TOTAL SHEETS | |
| 1 | | | 3 | | | 1 | 32 |
| 2 | | | 4 | | | | |