

PROJECT REFERENCE NO.	SHEET NO.
U-2579C	EC-27/CONST II
RW SHEET NO.	
ROADWAY DESIGN ENGINEER	HYDRAULICS ENGINEER
DOCUMENT NOT CONSIDERED FINAL UNLESS ALL SIGNATURES COMPLETED	

FINAL GRADING EROSION CONTROL FOR CONSTRUCTION SHEET 11

Place Matting for Erosion Control on Slope as Work Allows.
 Sta. 471+40 to Sta. 472+00 -L- LT
 Sta. 472+00 to Sta. 472+75 -L- RT
 Sta. 475+00 to Sta. 477+00 -L- LT
 Sta. 475+00 to Sta. 477+50 -L- RT

Place Matting for Erosion Control on Slopes Adjacent to Permitted Wetlands as Work Allows.

74 x 37 x 3
 1.5 inch Skimmer
 with 1.5 inch
 Orifice Diameter
 10 ft. weir
 ID 11.3

24 x 12 x 2
 ID 11.7

2@48 x 12 x 3
 ID 11.10

2@48 x 12 x 3
 ID 11.8

2@48 x 12 x 3
 ID 11.5

2@48 x 12 x 3
 ID 11.6

2@72 x 12 x 2
 ID 11.9

2@72 x 12 x 2
 ID 11.11

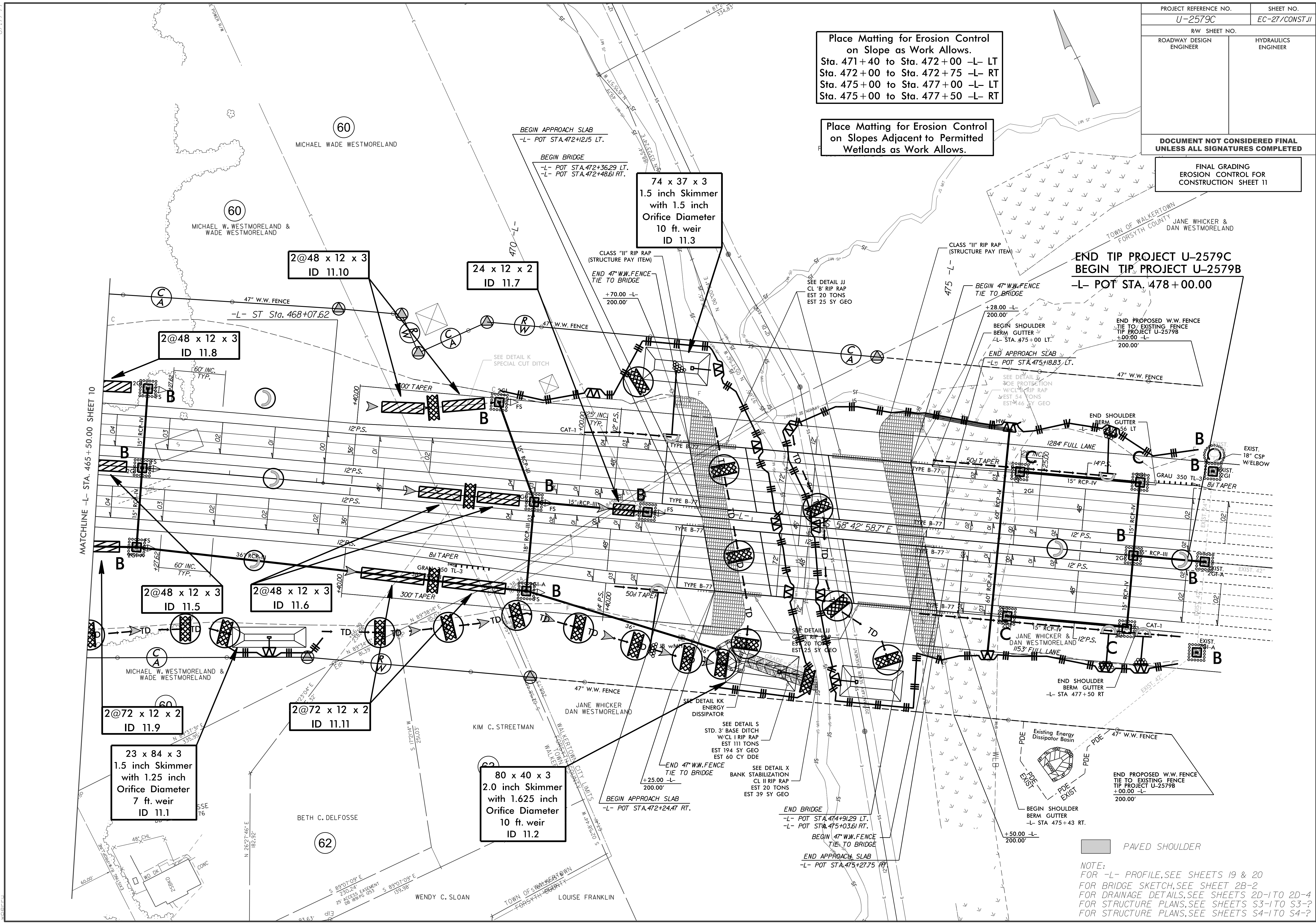
23 x 84 x 3
 1.5 inch Skimmer
 with 1.25 inch
 Orifice Diameter
 7 ft. weir
 ID 11.1

80 x 40 x 3
 2.0 inch Skimmer
 with 1.625 inch
 Orifice Diameter
 10 ft. weir
 ID 11.2

END TIP PROJECT U-2579C
 BEGIN TIP PROJECT U-2579B
 -L- POT STA. 478+00.00

PAVED SHOULDER

NOTE:
 FOR -L- PROFILE, SEE SHEETS 19 & 20
 FOR BRIDGE SKETCH, SEE SHEET 2B-2
 FOR DRAINAGE DETAILS, SEE SHEETS 2D-1 TO 2D-4
 FOR STRUCTURE PLANS, SEE SHEETS S3-1 TO S3-2
 FOR STRUCTURE PLANS, SEE SHEETS S4-1 TO S4-2



8/17/99
 6/23/2017 Ec.dsn_psh_27_Fg.dgn
 MICHAEL W. WESTMORELAND & WADE WESTMORELAND