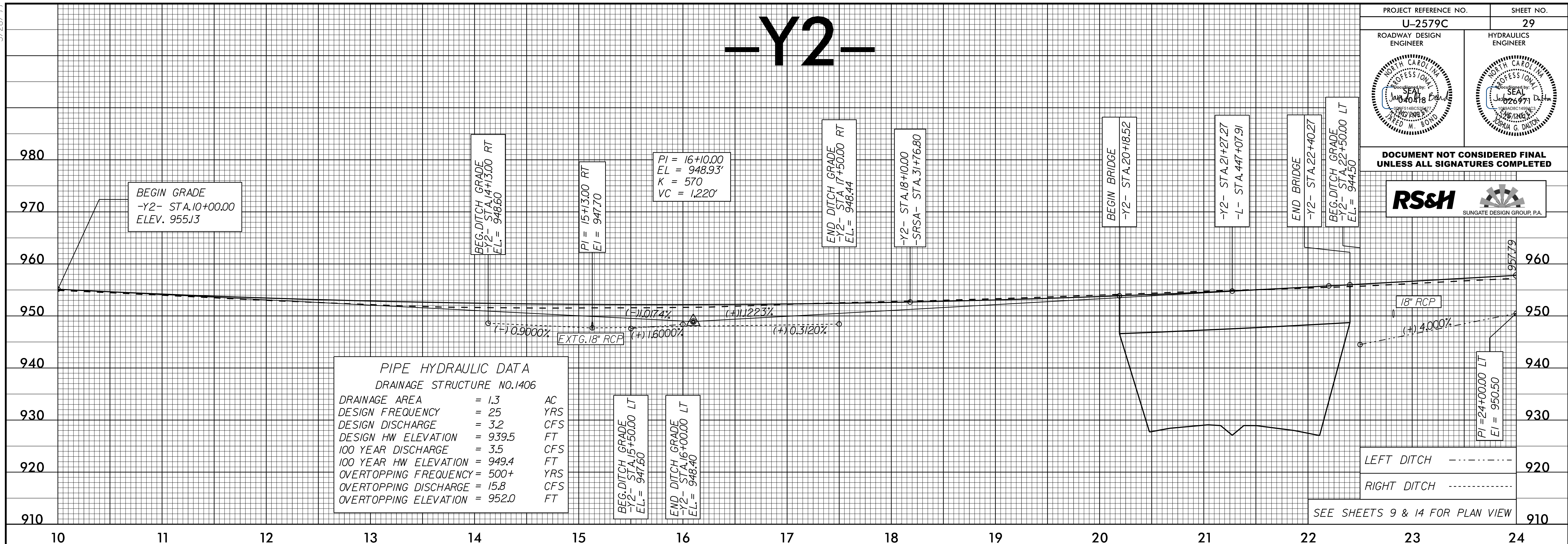
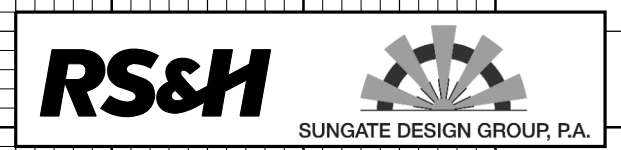


PROJECT REFERENCE NO. <b>U-2579C</b>	SHEET NO. <b>29</b>
ROADWAY DESIGN ENGINEER	HYDRAULICS ENGINEER

DOCUMENT NOT CONSIDERED FINAL UNLESS ALL SIGNATURES COMPLETED



**PIPE HYDRAULIC DATA**  
DRAINAGE STRUCTURE NO. 1406

DRAINAGE AREA	= 1.3	AC
DESIGN FREQUENCY	= 25	YRS
DESIGN DISCHARGE	= 3.2	CFS
DESIGN HW ELEVATION	= 939.5	FT
100 YEAR DISCHARGE	= 3.5	CFS
100 YEAR HW ELEVATION	= 949.4	FT
OVERTOPPING FREQUENCY	= 500+	YRS
OVERTOPPING DISCHARGE	= 15.8	CFS
OVERTOPPING ELEVATION	= 952.0	FT

BEG. DITCH GRADE  
-Y2- STA. 15+50.00 LT  
E.L. = 947.60

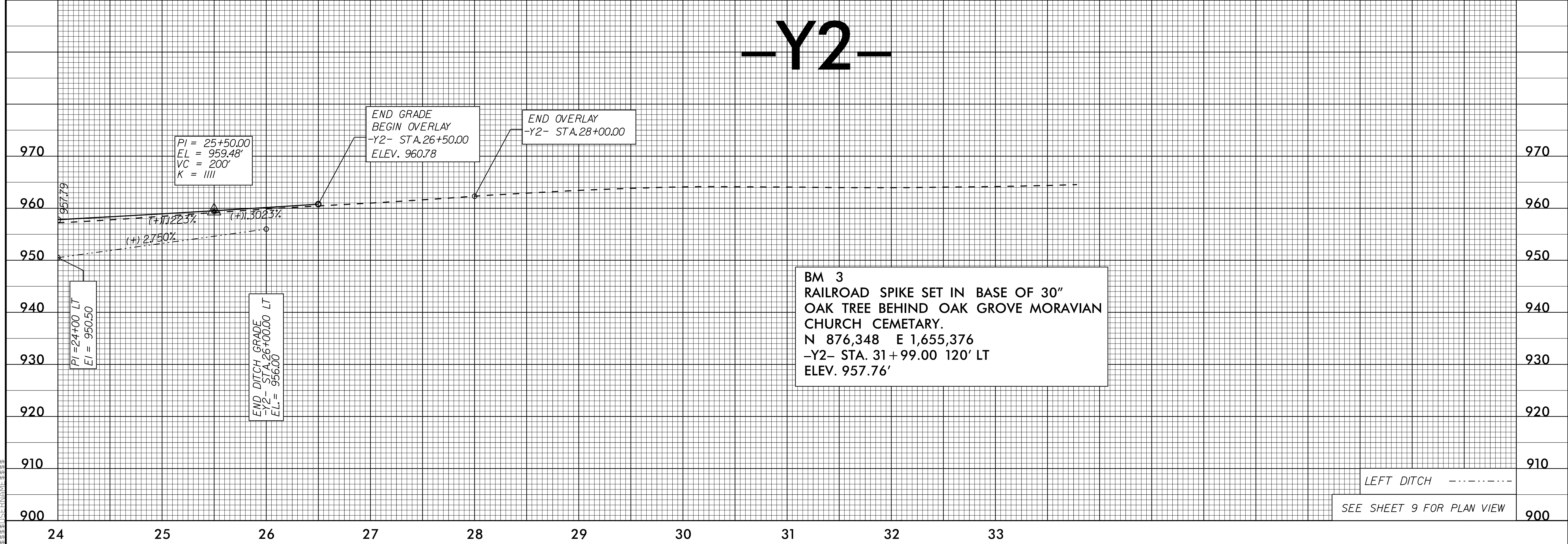
END DITCH GRADE  
-Y2- STA. 16+00.00 LT  
E.L. = 948.40

LEFT DITCH -----

RIGHT DITCH -----

SEE SHEETS 9 & 14 FOR PLAN VIEW

# -Y2-



BM 3  
RAILROAD SPIKE SET IN BASE OF 30"  
OAK TREE BEHIND OAK GROVE MORAVIAN  
CHURCH CEMETARY.  
N 876,348 E 1,655,376  
-Y2- STA. 31+99.00 120' LT  
ELEV. 957.76'

LEFT DITCH -----

SEE SHEET 9 FOR PLAN VIEW