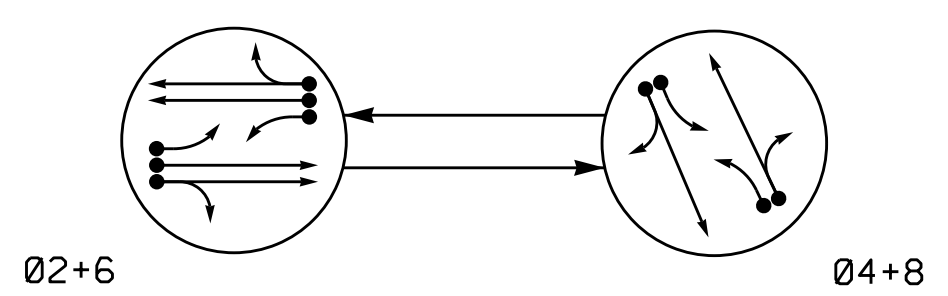


PHASING DIAGRAM



PHASING DIAGRAM DETECTION LEGEND

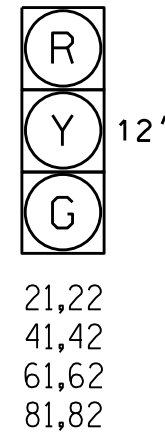
- ←● DETECTED MOVEMENT
- ← UNDETECTED MOVEMENT (OVERLAP)
- UNSIGNALIZED MOVEMENT
- ←--- PEDESTRIAN MOVEMENT

TABLE OF OPERATION

SIGNAL FACE	PHASE		
	02+6	04+8	FLASH
21,22	G	R	Y
41,42	R	G	R
61,62	G	R	Y
81,82	R	G	R

SIGNAL FACE I.D.

All Heads L.E.D.



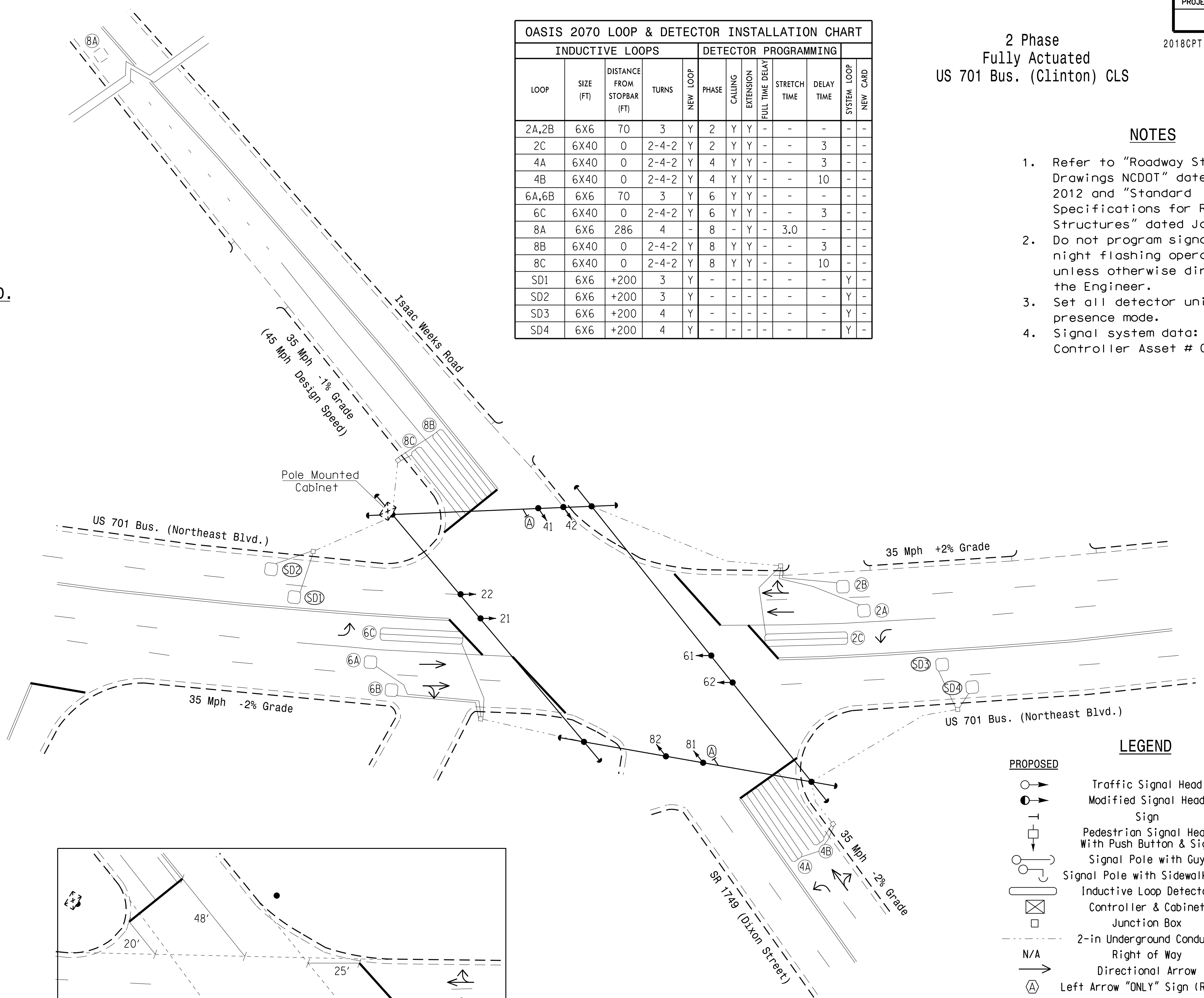
OASIS 2070 LOOP & DETECTOR INSTALLATION CHART

LOOP	SIZE (FT)	DISTANCE FROM STOPBAR (FT)	TURNS	DETECTOR PROGRAMMING				STRETCH TIME	DELAY TIME	SYSTEM LOOP	NEW CARD
				NEW LOOP	PHASE	CALLING	EXTENSION				
2A,2B	6X6	70	3	Y	2	Y	Y	-	-	-	-
2C	6X40	0	2-4-2	Y	2	Y	Y	-	3	-	-
4A	6X40	0	2-4-2	Y	4	Y	Y	-	3	-	-
4B	6X40	0	2-4-2	Y	4	Y	Y	-	10	-	-
6A,6B	6X6	70	3	Y	6	Y	Y	-	-	-	-
6C	6X40	0	2-4-2	Y	6	Y	Y	-	3	-	-
8A	6X6	286	4	-	8	-	Y	3.0	-	-	-
8B	6X40	0	2-4-2	Y	8	Y	Y	-	3	-	-
8C	6X40	0	2-4-2	Y	8	Y	Y	-	10	-	-
SD1	6X6	+200	3	Y	-	-	-	-	-	Y	-
SD2	6X6	+200	3	Y	-	-	-	-	-	Y	-
SD3	6X6	+200	4	Y	-	-	-	-	-	Y	-
SD4	6X6	+200	4	Y	-	-	-	-	-	Y	-

2 Phase
Fully Actuated
US 701 Bus. (Clinton) CLS

NOTES

- Refer to "Roadway Standard Drawings NCDOT" dated January 2012 and "Standard Specifications for Roads and Structures" dated January 2012.
- Do not program signal for late night flashing operation unless otherwise directed by the Engineer.
- Set all detector units to presence mode.
- Signal system data:
Controller Asset # 0178.



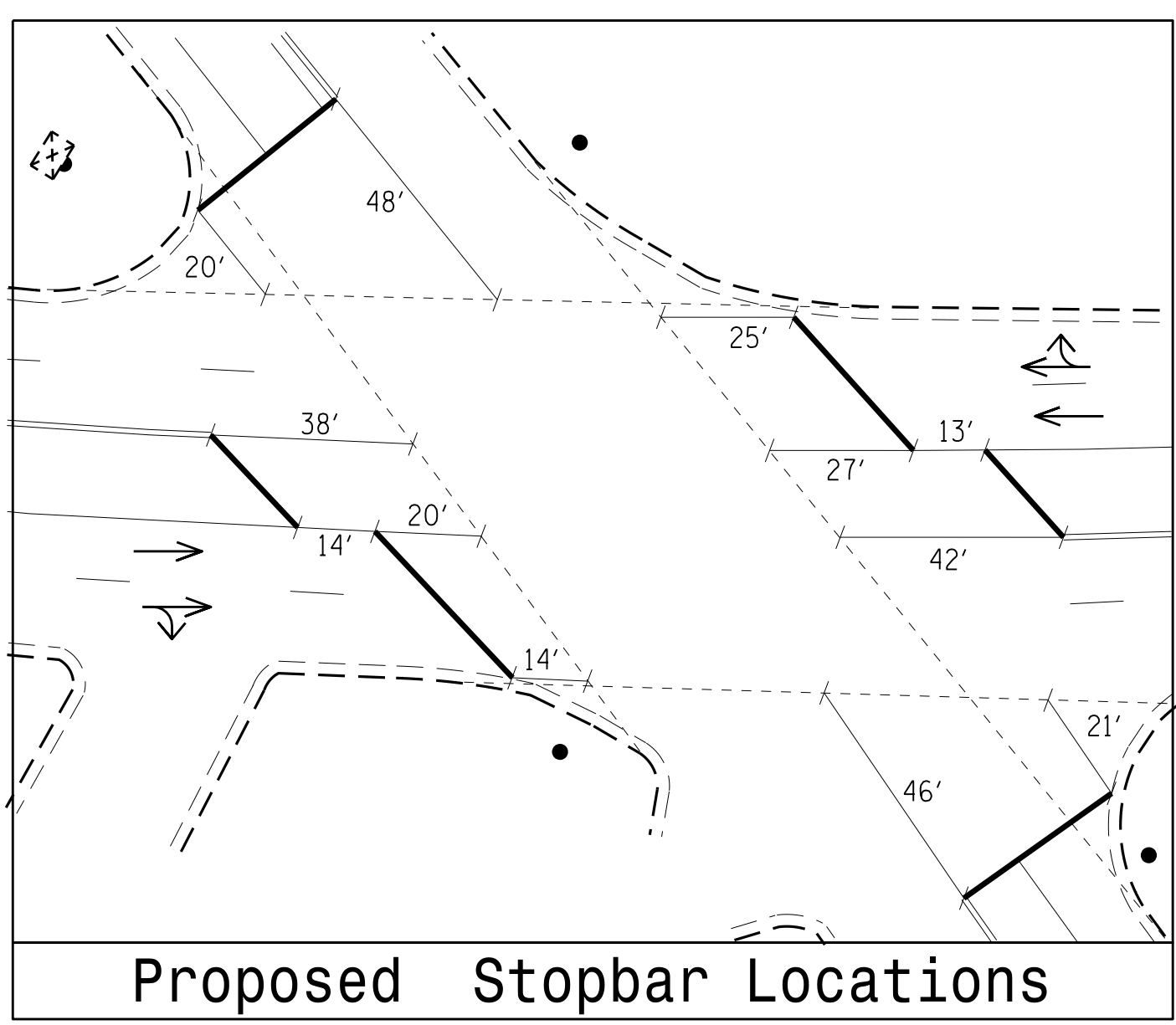
LEGEND

PROPOSED	EXISTING
○→ Traffic Signal Head	●→ Traffic Signal Head
○→ Modified Signal Head	N/A
⊥ Sign	⊥ Sign
⊥ Pedestrian Signal Head With Push Button & Sign	⊥ Pedestrian Signal Head With Push Button & Sign
○→ Signal Pole with Guy	○→ Signal Pole with Guy
○→ Signal Pole with Sidewalk Guy	○→ Signal Pole with Sidewalk Guy
⊠ Inductive Loop Detector	⊠ Inductive Loop Detector
⊠ Controller & Cabinet	⊠ Controller & Cabinet
⊠ Junction Box	⊠ Junction Box
--- 2-in Underground Conduit	--- 2-in Underground Conduit
N/A	--- Right of Way
→ Directional Arrow	→ Directional Arrow
(A) Left Arrow "ONLY" Sign (R3-5L)	(A) Left Arrow "ONLY" Sign (R3-5L)

OASIS 2070 TIMING CHART

FEATURE	PHASE			
	2	4	6	8
Min Green 1 *	10	7	10	7
Extension 1 *	3.0	2.0	3.0	2.0
Max Green 1 *	55	25	55	25
Yellow Clearance	4.0	4.6	4.0	4.6
Red Clearance	1.8	2.9	1.8	2.9
Walk 1 *	-	-	-	-
Don't Walk 1	-	-	-	-
Seconds Per Actuation *	-	-	-	-
Max Variable Initial *	-	-	-	-
Time Before Reduction *	-	-	-	-
Time To Reduce *	-	-	-	-
Minimum Gap	-	-	-	-
Recall Mode	MIN RECALL	-	MIN RECALL	-
Vehicle Call Memory	YELLOW	-	YELLOW	-
Dual Entry	-	ON	-	ON
Simultaneous Gap	ON	ON	ON	ON

* These values may be field adjusted. Do not adjust Min Green and Extension times for phases 2 and 6 lower than what is shown. Min Green for all other phases should not be lower than 4 seconds.



Signal Upgrade

Prepared in the Offices of:

 750 N. Greenfield Pkwy, Garner, NC 27529

US 701 Bus. (Northeast Blvd.) at Isaac Weeks Road / SR 1749 (Dixon Street)

Division 3 Sampson County Clinton

PLAN DATE: March 2017 REVIEWED BY: JPG

PREPARED BY: Jeff Spence REVIEWED BY:

REVISIONS: INIT. DATE

SCALE: 0 30
1"=30'

DOCUMENT NOT CONSIDERED FINAL UNLESS ALL SIGNATURES COMPLETED

SEAL

 Jason P. Galloway 4/26/2017
 7700EA70481841D DATE
 SIG. INVENTORY NO. 03-0178