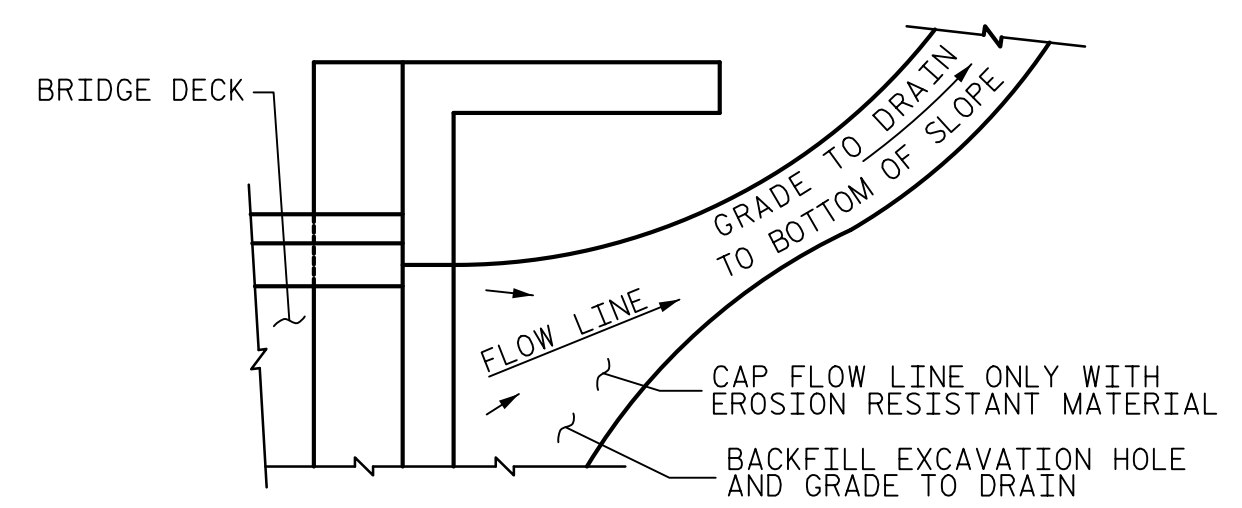


**PLAN @ END BENT #1**      **PLAN @ END BENT #2**  
 DIMENSIONS SHOWN ARE TYPICAL FOR BOTH APPROACH SLABS

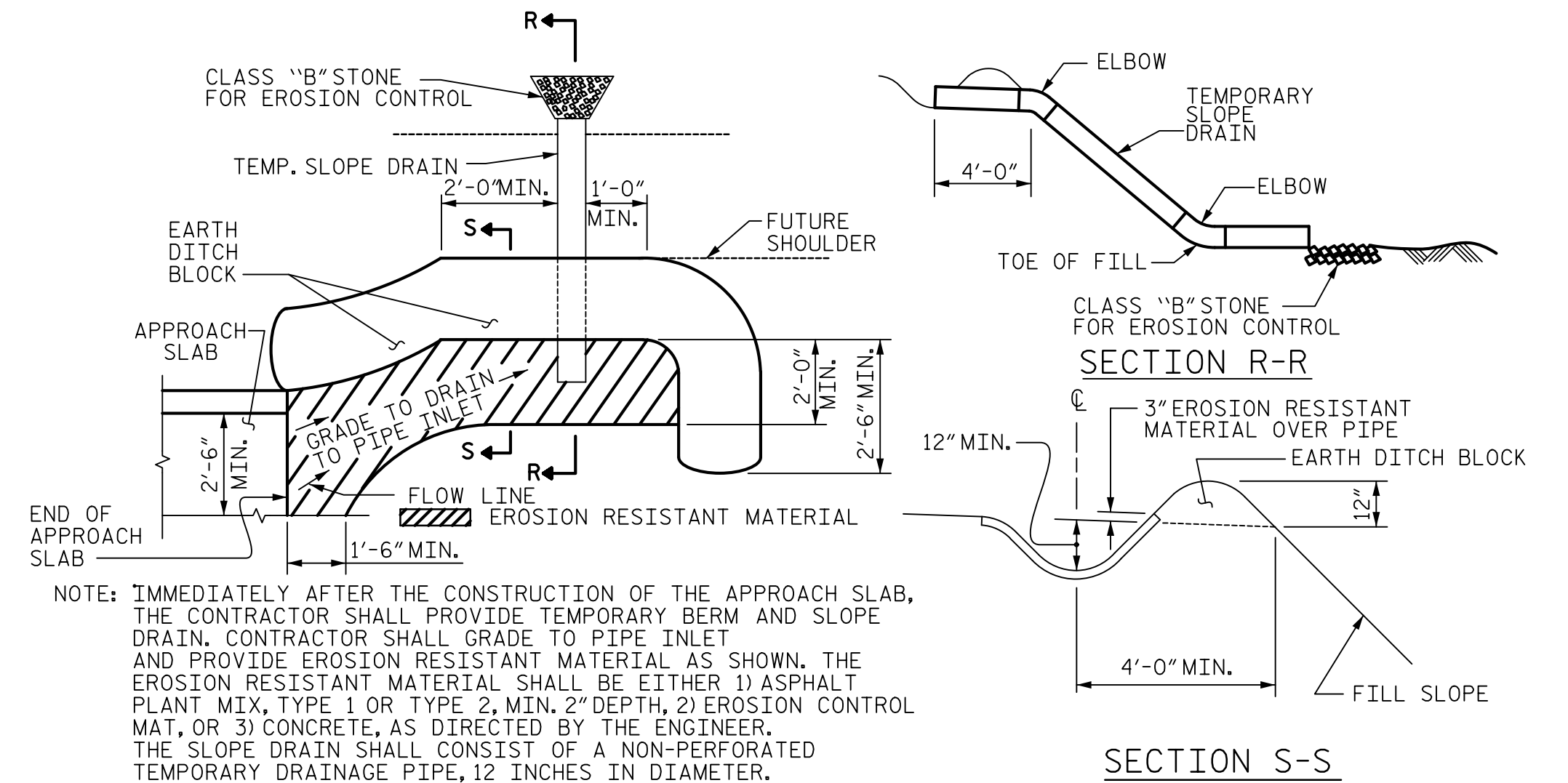
SPlice LENGTHS		
BAR SIZE	EPOXY COATED	UNCOATED
#4	2'-0"	1'-9"
#5	2'-6"	2'-2"
#6	3'-10"	2'-7"

**NOTES**  
 FOR REINFORCED BRIDGE APPROACH FILL INCLUDING GEOTEXTILE, IMPERMEABLE GEOMEMBRANE, 4" Ø DRAINAGE PIPE, #78M STONE, AND SELECT MATERIAL, SEE ROADWAY PLANS.  
 AREA BETWEEN THE WINGWALL AND APPROACH SLAB SHALL BE GRADED TO DRAIN THE WATER AWAY FROM THE FILL FACE OF THE BRIDGE AND SHALL BE PAVED. SEE ROADWAY PLANS.  
 APPROACH SLAB GROOVING IS NOT REQUIRED.



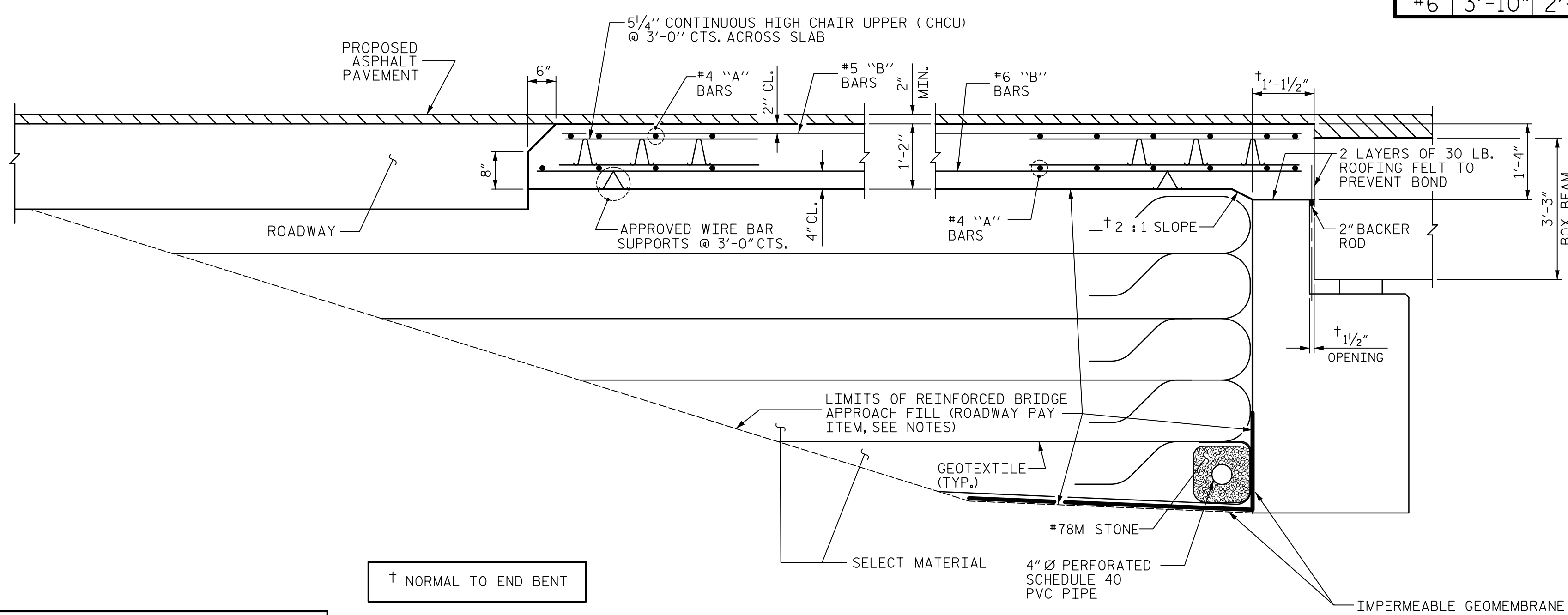
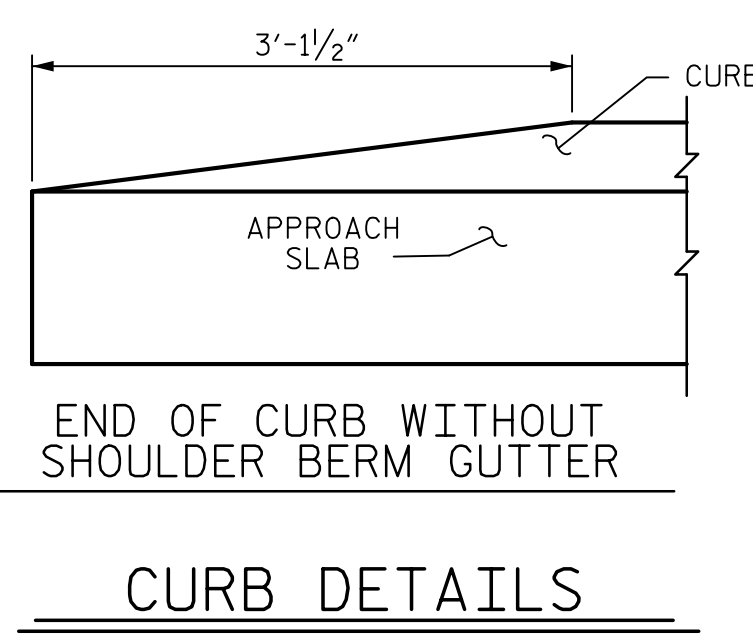
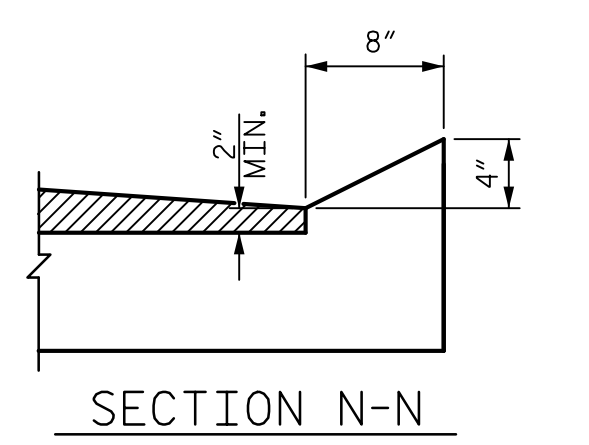
**NOTE:** IF THE APPROACH SLAB IS NOT CONSTRUCTED IMMEDIATELY AFTER THE BACKFILLING OF THE END BENT EXCAVATION, GRADE TO DRAIN TO THE BOTTOM OF THE SLOPE AND PROVIDE EROSION RESISTANT MATERIAL, SUCH AS FIBERGLASS ROVING OR AS DIRECTED BY THE ENGINEER TO PREVENT SOIL EROSION AND TO PROTECT THE AREA ADJACENT TO THE STRUCTURE. THE CONTRACTOR WILL BE REQUIRED TO REMOVE THESE MATERIALS PRIOR TO CONSTRUCTION OF THE APPROACH SLAB.

**TEMPORARY DRAINAGE DETAIL**



**NOTE:** IMMEDIATELY AFTER THE CONSTRUCTION OF THE APPROACH SLAB, THE CONTRACTOR SHALL PROVIDE TEMPORARY BERM AND SLOPE DRAIN. CONTRACTOR SHALL GRADE TO PIPE INLET AND PROVIDE EROSION RESISTANT MATERIAL AS SHOWN. THE EROSION RESISTANT MATERIAL SHALL BE EITHER 1) ASPHALT PLANT MIX, TYPE 1 OR TYPE 2, MIN. 2" DEPTH, 2) EROSION CONTROL MAT, OR 3) CONCRETE, AS DIRECTED BY THE ENGINEER. THE SLOPE DRAIN SHALL CONSIST OF A NON-PERFORATED TEMPORARY DRAINAGE PIPE, 12 INCHES IN DIAMETER.

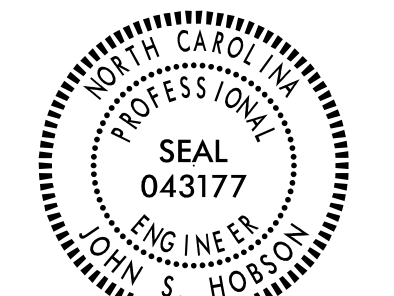
**TEMPORARY BERM AND SLOPE DRAIN DETAILS**  
 (TO BE USED WHEN SHOULDER BERM GUTTER IS REQUIRED)



**SECTION THRU SLAB**

**Mead & Hunt**

133 Fayetteville Street  
 Suite 210  
 Raleigh, NC 27601  
 919-714-8670  
 meadhunt.com  
 NC License No. F-1235



DocuSigned by:  
 Jack Hobson 6/1/2017  
 486E7C2B877044B

DOCUMENT NOT CONSIDERED FINAL UNLESS ALL SIGNATURES COMPLETED

PROJECT NO. B-4964  
 ROCKINGHAM COUNTY  
 STATION: 18+73.69 -L-  
12+70.54 -RAIL-

STATE OF NORTH CAROLINA  
 DEPARTMENT OF TRANSPORTATION  
 RALEIGH  
 STANDARD BRIDGE APPROACH SLAB FOR PRESTRESSED CONCRETE BOX BEAM UNIT (SUB-REGIONAL TIER)  
 90° SKEW

REVISIONS		SHEET NO.	
NO.	BY:	DATE:	NO.
1			3
2			4

ASSEMBLED BY : J.S. HOBSON DATE :07/06/16  
 CHECKED BY : J.A. LEE DATE :07/15/16  
 DRAWN BY : MAA 11/11  
 CHECKED BY : AAC 11/11  
 REV. 9-15 MAA/TMG