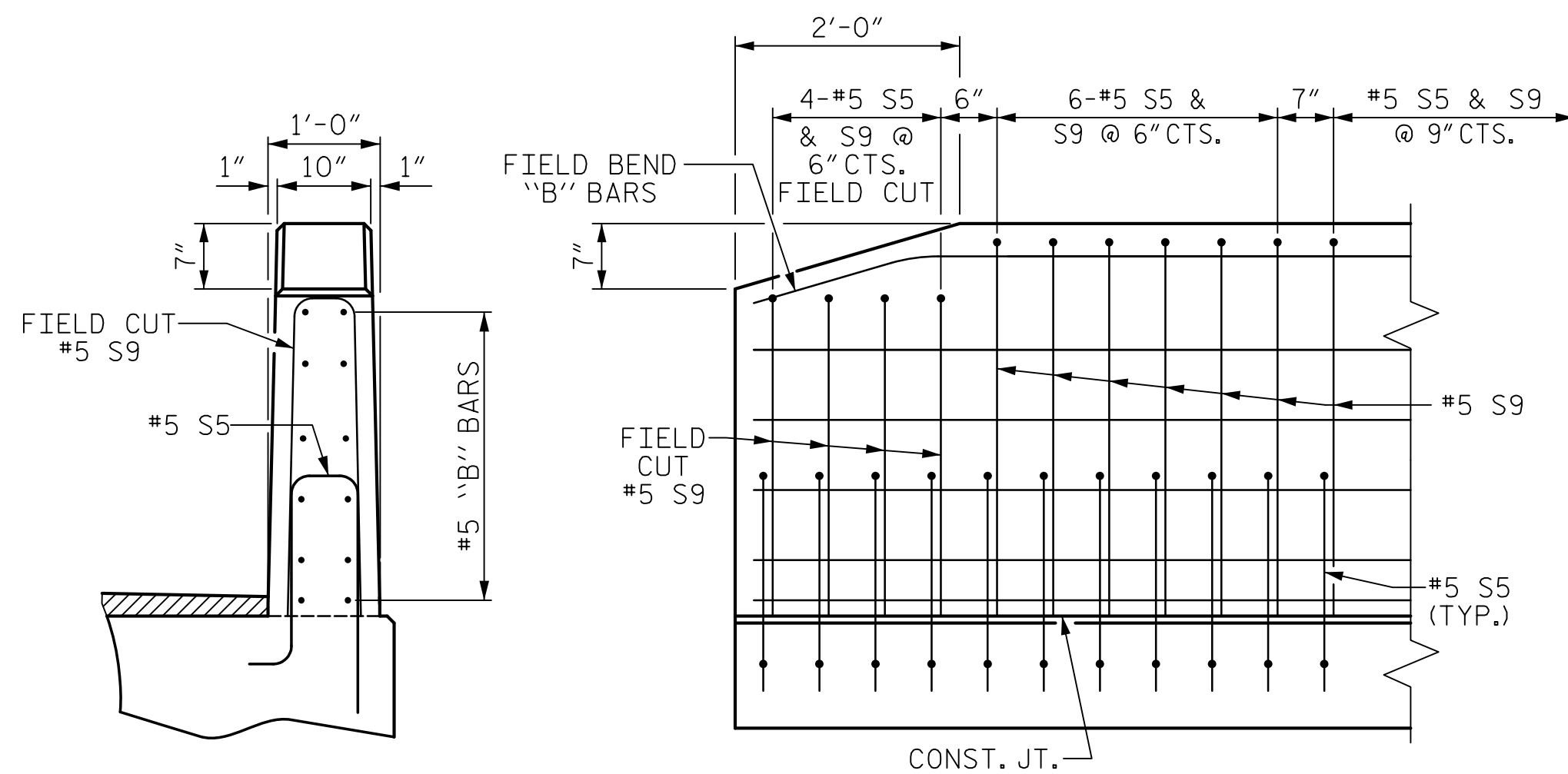


FIXED END
(TYPE II - 22 REQ'D)

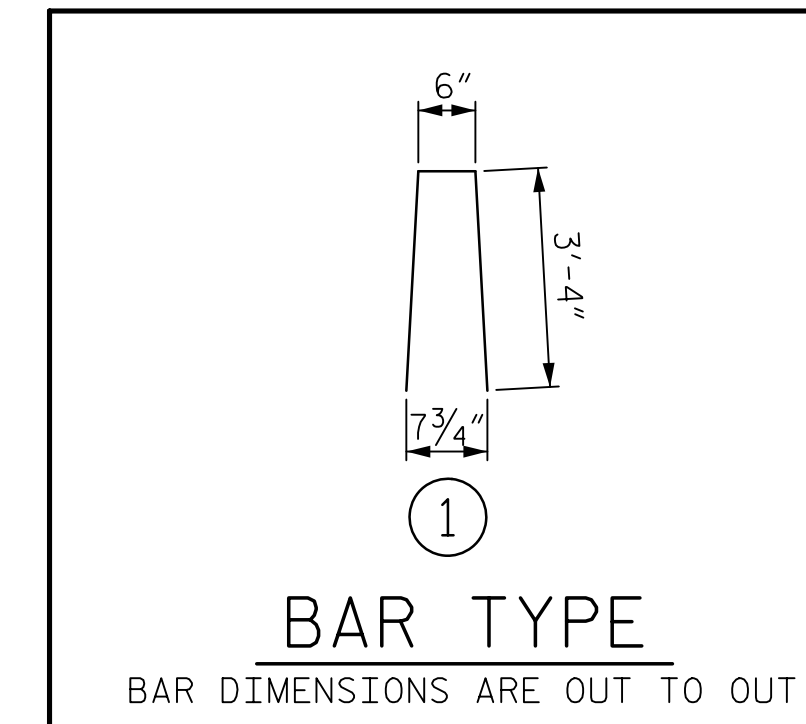
ELASTOMERIC BEARING DETAILS

ELASTOMER IN ALL BEARINGS SHALL BE 60 DUROMETER HARDNESS.



END OF RAIL DETAILS

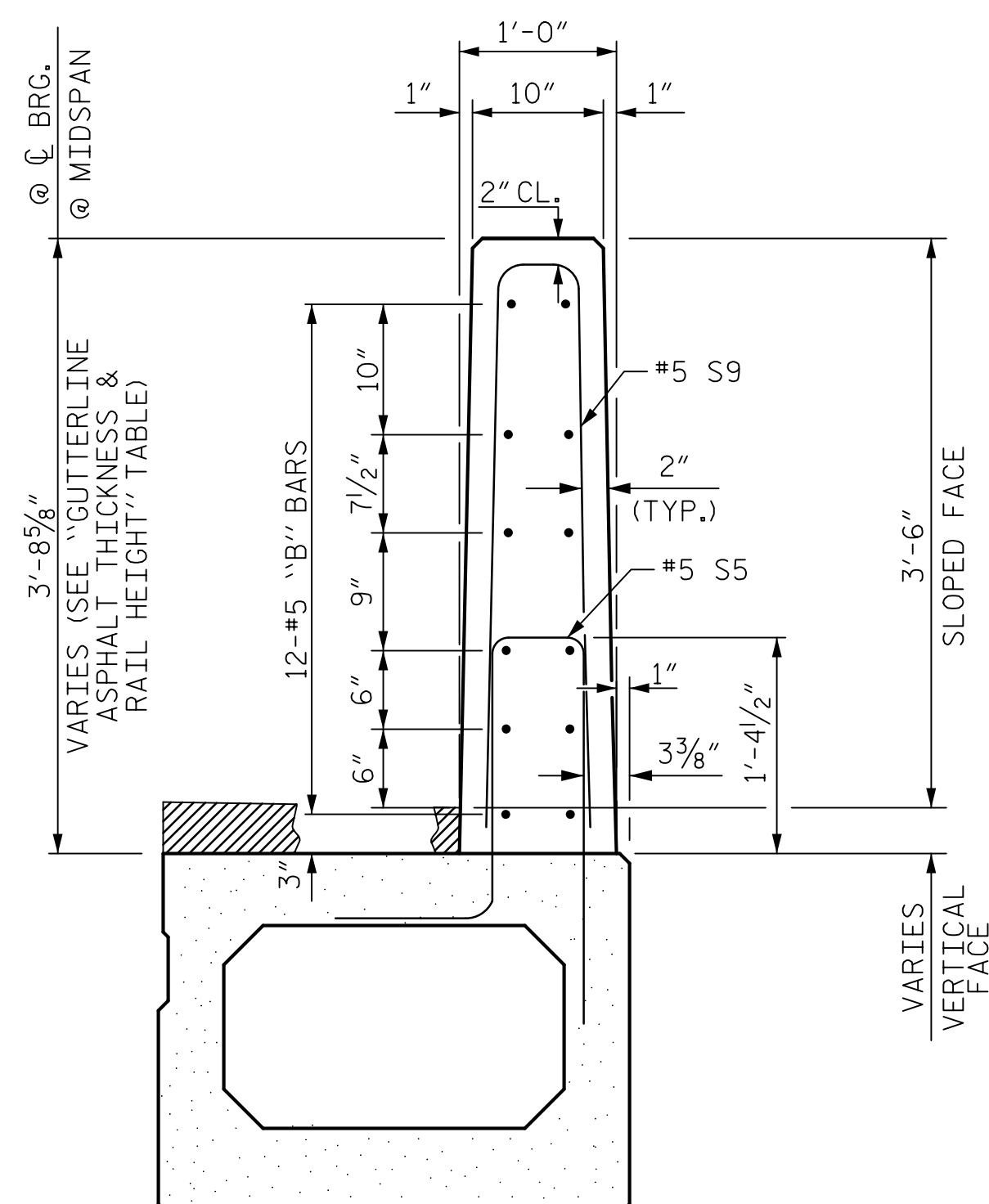
BOX BEAM UNITS REQUIRED			
	NUMBER	LENGTH	TOTAL LENGTH
EXTERIOR B.B.	2	103'-5"	206'-10"
INTERIOR B.B.	9	103'-5"	930'-9"
TOTAL	11		1137'-7"



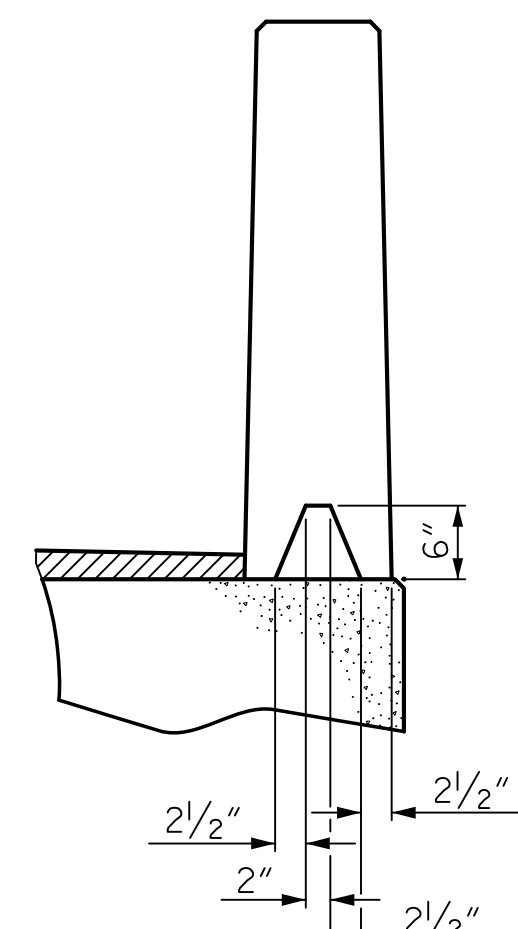
BAR TYPE
BAR DIMENSIONS ARE OUT TO OUT

BILL OF MATERIAL FOR VERTICAL CONCRETE BARRIER RAIL					
BAR	BARS PER PAIR OF EXTERIOR UNITS	SIZE	TYPE	LENGTH	WEIGHT
103'-5" UNIT					
*B12	96	#5	STR	25'-5"	2545
*S9	288	#5	1	7'-2"	2153
* EPOXY COATED REINFORCING STEEL				LBS.	4698
CLASS AA CONCRETE				CU.YDS.	27.0
TOTAL VERTICAL CONCRETE BARRIER RAIL				LN. FT.	206.8

GUTTERLINE ASPHALT THICKNESS & RAIL HEIGHT		
	ASPHALT OVERLAY THICKNESS @ MID-SPAN	RAIL HEIGHT @ MID-SPAN
103'-5" UNITS	1 5/16"	3'-7 5/16"

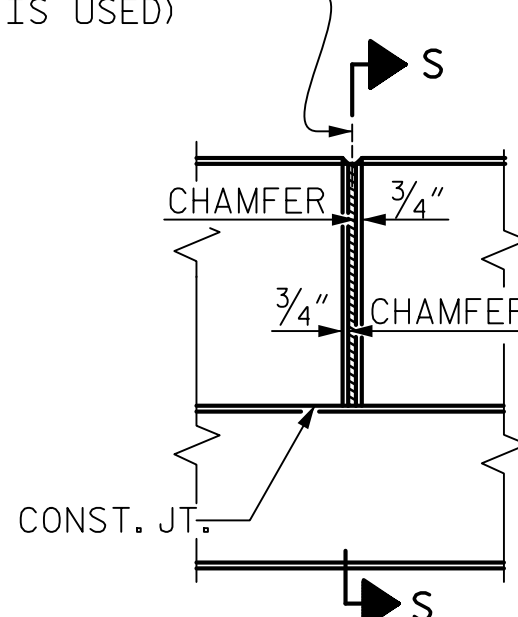


SECTION THRU RAIL



SECTION S-S
AT DAM IN OPEN JOINT
(THIS IS TO BE USED ONLY
WHEN SLIP FORM IS USED)

1/2" EXP. JT. MAT'L HELD IN PLACE WITH GALVANIZED NAILS.
(NOTE: OMIT EXP. JT. MAT'L. WHEN SLIP FORM IS USED)



ELEVATION AT EXPANSION JOINTS

VERTICAL CONCRETE BARRIER RAIL DETAILS

Mead & Hunt

133 Fayetteville Street
Suite 210
Raleigh, NC 27601
919-714-8670
meadhunt.com
NC License No. F-1235



DocuSigned by:
Jack Hobson 6/1/2017

DOCUMENT NOT CONSIDERED FINAL UNLESS ALL SIGNATURES COMPLETED

PROJECT NO. B-4964
ROCKINGHAM COUNTY
STATION: 18+73.69 -L-
12+70.54 -RAIL-
SHEET 5 OF 5

STATE OF NORTH CAROLINA
DEPARTMENT OF TRANSPORTATION
RALEIGH

3'-0" X 3'-3"
PRESTRESSED CONCRETE
BOX BEAM UNIT

REVISIONS

NO.	BY:	DATE:	NO.	BY:	DATE:
1			3		
2			4		

SHEET NO.
S-09
TOTAL SHEETS
16

DRAWN BY : J.S. HOBSON DATE : 06/03/16
CHECKED BY : J.A. LEE DATE : 07/05/16
DESIGN ENGINEER OF RECORD : J.S. HOBSON DATE : 07/05/16