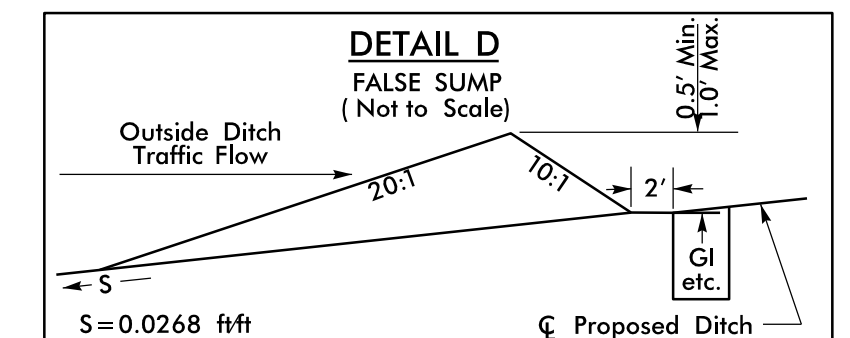
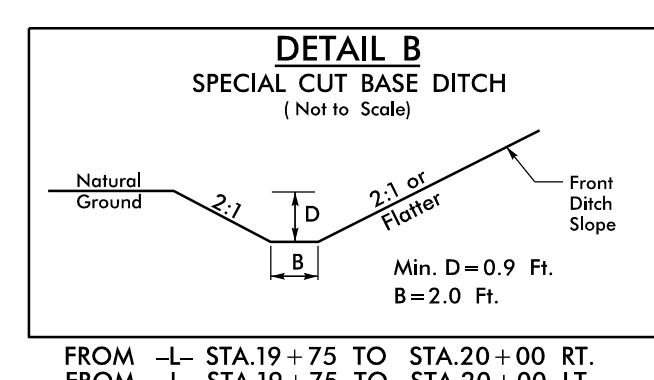
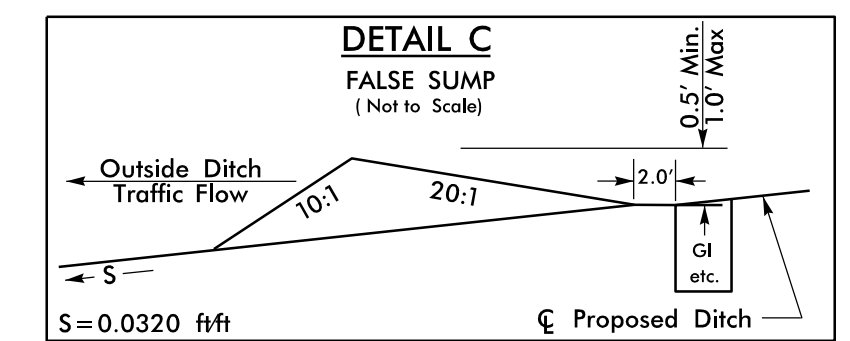
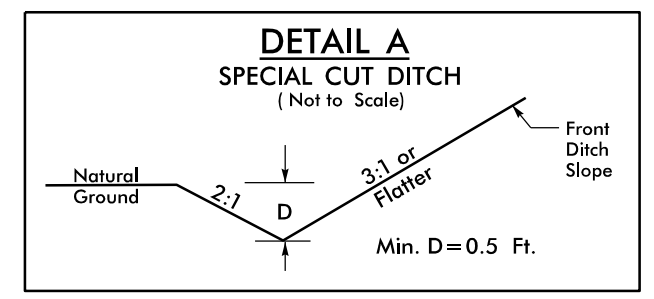
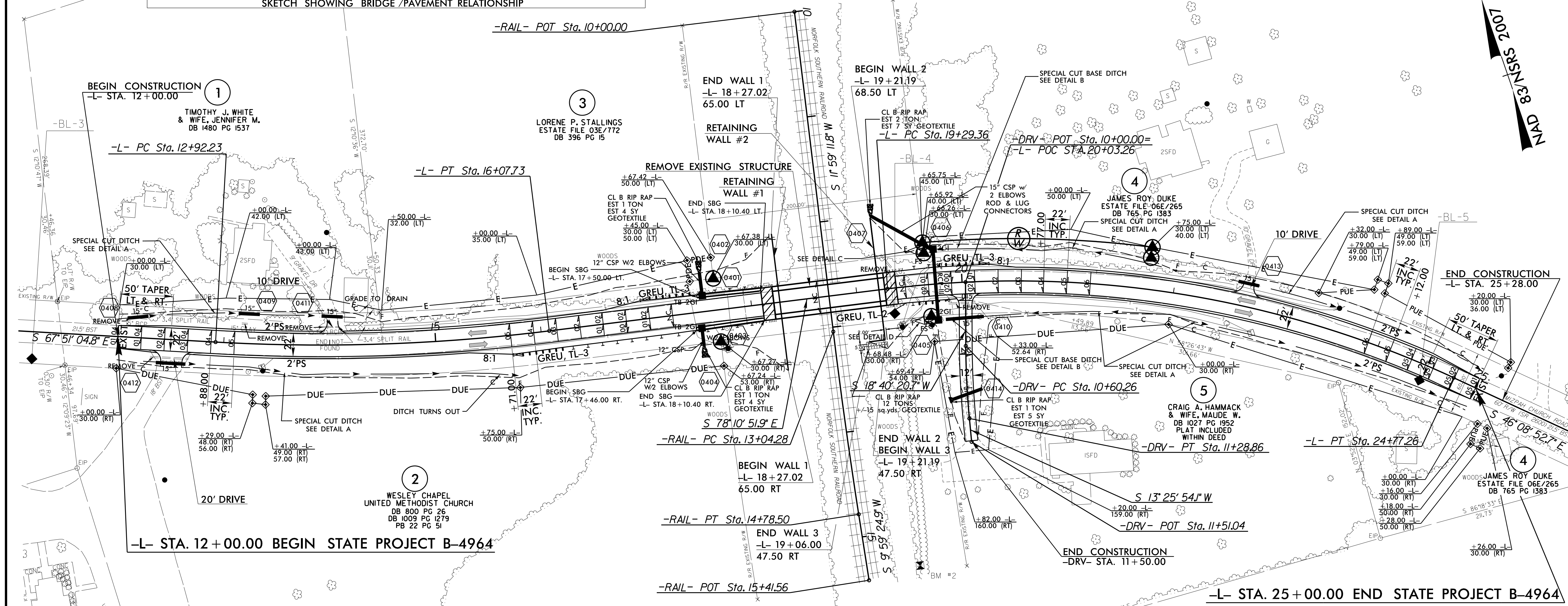
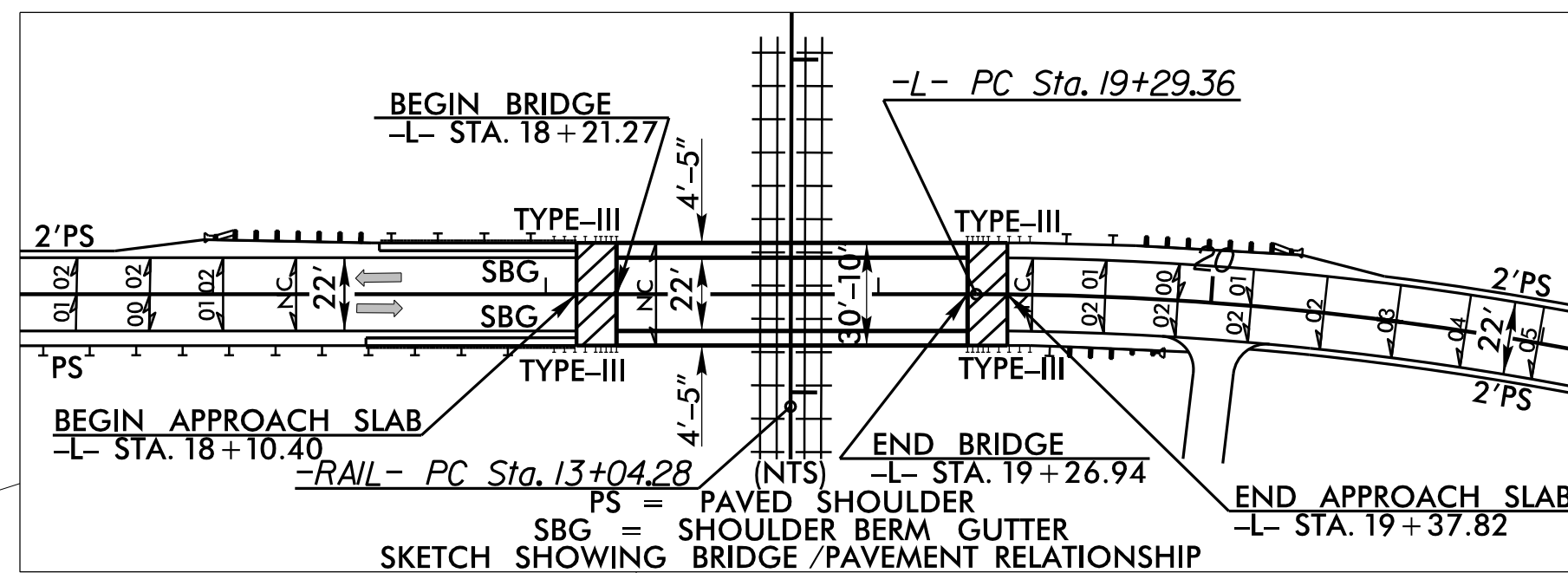




Prepared in the Office of:
JOHNSON, MIRMIRAN, & THOMPSON, INC.
 1130 Situs Court, Suite 200, Raleigh NC, 27606

| | |
|--|---------------------|
| PROJECT REFERENCE NO. B-4964 | SHEET NO. 4 |
| RW SHEET NO. | |
| ROADWAY DESIGN ENGINEER | HYDRAULICS ENGINEER |
| | |
| DOCUMENT NOT CONSIDERED FINAL UNLESS ALL SIGNATURES COMPLETED | |

| -L- | -DRV- | -RAIL- |
|--|--|---|
| PI Sta 14+50.41 Δ = 10°19' 47.1" (LT) D = 3°16' 26.6" L = 315.50' T = 158.18' R = 1,750.00' SE = SEE PLANS | PI Sta 22+10.67 Δ = 32°01' 59.2" (RT) D = 5°50' 47.4" L = 547.90' T = 281.32' R = 980.00' SE = SEE PLANS | PI Sta 10+94.58 Δ = 5°14' 26.6" (LT) D = 7°38' 22.0" L = 68.60' T = 34.32' R = 750.00' SE = SEE PLANS |
| PI Sta 13+91.40 Δ = 1°59' 46.9" (LT) D = 1°08' 45.3" L = 174.22' T = 87.12' R = 5,000.00' | | |



NOTE:
 1. TIE -DRV- TO EXISTING CROSS SLOPES.
 2. PAVE ALL DRIVES TO BACK OF TURNOUT RADIUS.
 3. SBG = SHOULDER BERM GUTTER
 4. ALL DRIVE RADII ARE 10' UNLESS OTHERWISE SPECIFIED.

SEE SHEET 5 FOR -L- PROFILE
 SEE SHEET 6 FOR -DRV- AND -RAIL- PROFILE
 SEE SHEETS S-1 THRU S-16 FOR STRUCTURE PLANS
 SEE SHEETS W-1 THRU W-4 FOR RETAINING WALL PLANS

REVISIONS

7/10/2017
 11:44:34 AM
 B:\4964-rdw-esh4.dgn