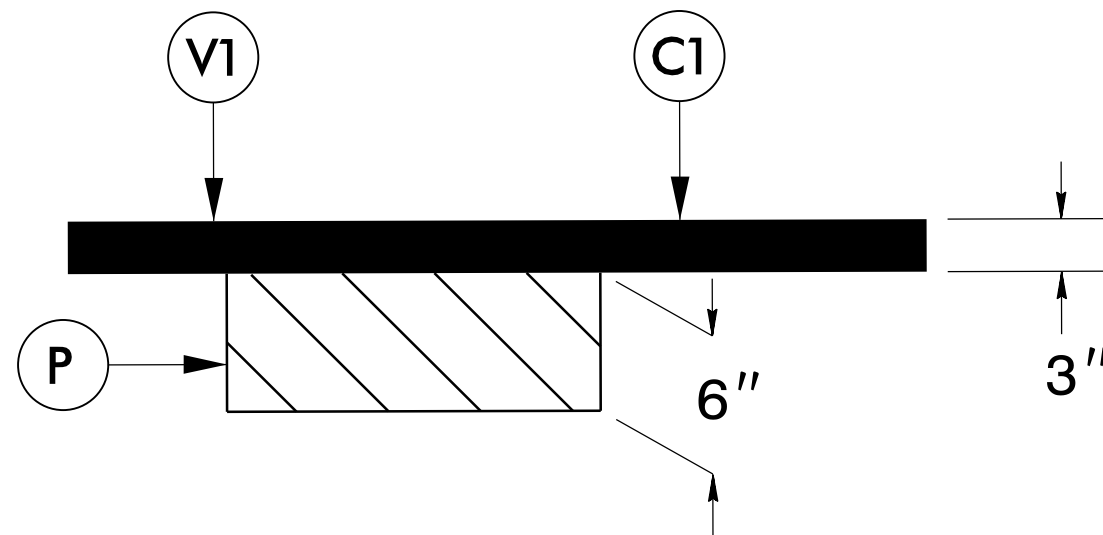


## 6" DEPTH MILL PATCHING DETAIL



PAVEMENT SCHEDULE	
C1	PROP. APPROX. 3" ASPHALT CONCRETE SURFACE COURSE, TYPE S9.5C, IN (2) TWO LAYERS AT AN AVERAGE RATE OF 168 LBS. PER SQ. YD. PER LAYER
V1	INCIDENTAL MILLING
P	6" DEPTH MILL PATCHING W/ B 25.0B
DRAWINGS NOT TO SCALE	

**NOTE:**

1. THE CONTRACTOR SHALL PERFORM ANY UNIFORM OR INCIDENTAL MILLING AT TIE-INS BEFORE PERFORMING THE 6" DEPTH MILL PATCHING.
2. THE CONTRACTOR SHALL PERFORM THE 6" DEPTH MILL PATCHING REMOVAL AND REPLACEMENT IN THE SAME DAY.
3. 6" DEPTH MILL PATCHING SHALL BE PERFORMED AT LOCATIONS AS SHOWN ON THE PLANS AND AS DIRECTED BY THE ENGINEER.