

BILL OF MATERIAL

FOR ONE BENT

BAR	NO.	SIZE	TYPE	LENGTH	WEIGHT
B1	4	#10	1	34'-10"	600
B2	4	#10	STR	32'-2"	554
B3	4	#5	STR	32'-2"	134
B4	12	#4	STR	17'-4"	139
B5	8	#4	STR	2'-11"	16
D1	40	#6	STR	1'-6"	90
S1	32	#5	2	8'-1"	270
S2	14	#4	3	8'-7"	80
U1	4	#4	4	5'-10"	16
U2	6	#4	4	5'-0"	20
U3	2	#9	4	10'-1"	69
U4	32	#4	4	4'-2"	89

REINFORCING STEEL (FOR ONE BENT) 2077 LBS

CLASS A CONCRETE BREAKDOWN (FOR ONE BENT)

TOTAL CLASS A CONCRETE ▲ 9.9 C.Y.

PP 18 x 0.50 GALVANIZED STEEL PILES (FOR ONE BENT)

No. 7 LIN. FT. 385

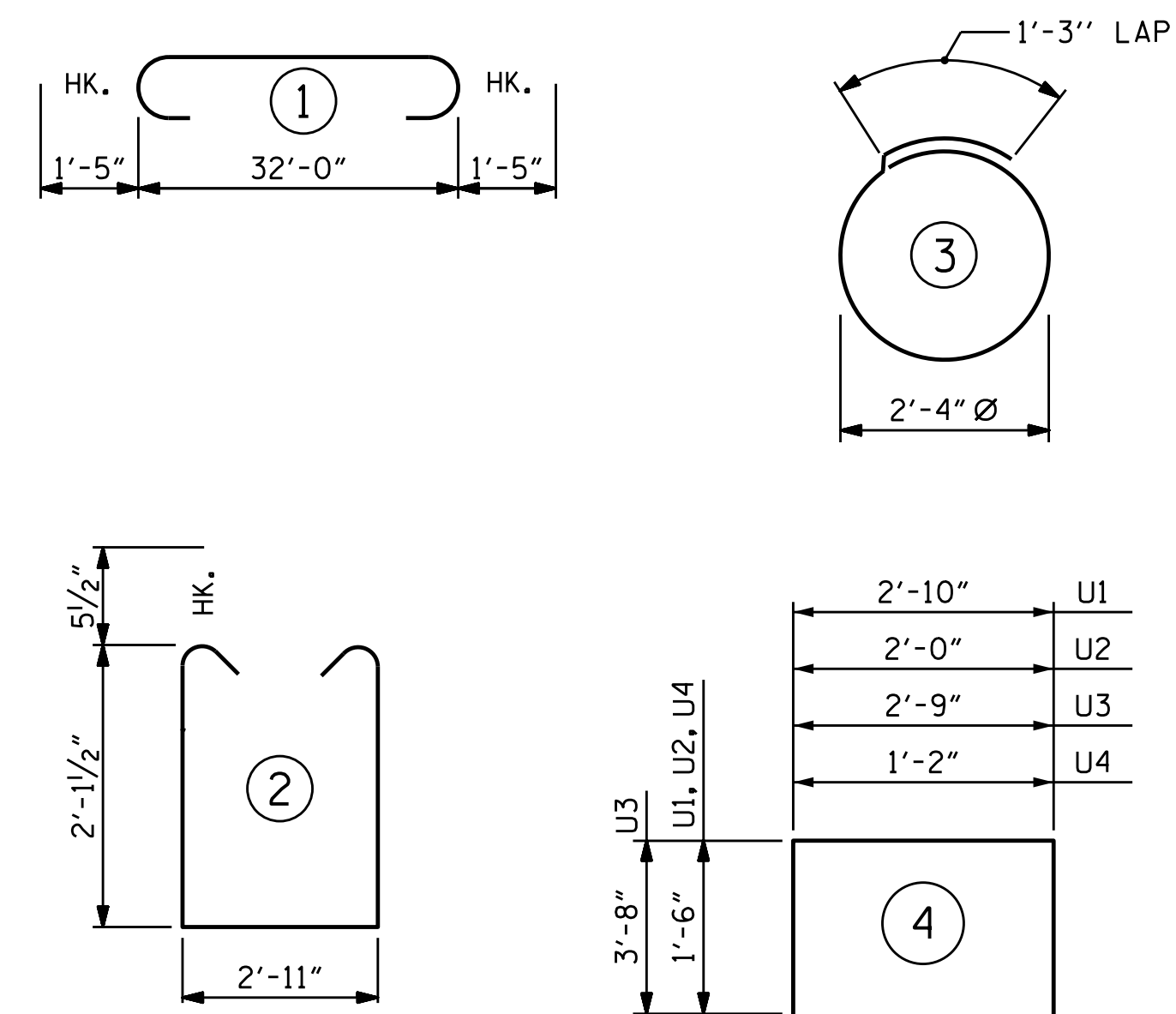
PIPE PILE PLATES No. = 7

PILE REDRIVES BENT 1 = 3
BENT 2 = 4

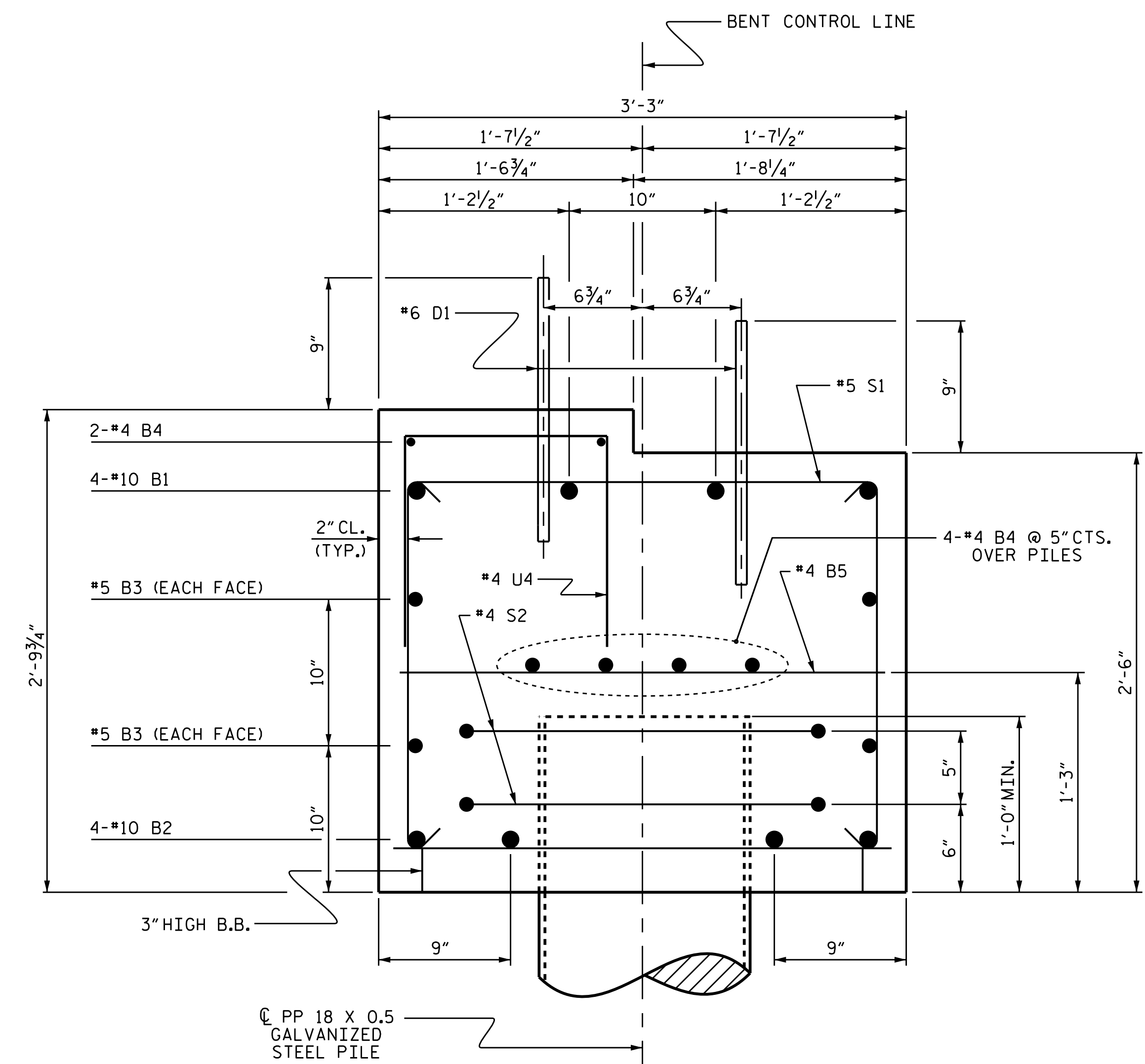
PILE DRIVING EQUIPMENT SETUP FOR PP 18 X 0.50 GALVANIZED STEEL PILES No. = 7

▲ CONCRETE DISPLACED BY THE PP 18 x 0.50 GALVANIZED STEEL PILES HAS BEEN DEDUCTED FROM THE CONCRETE QUANTITY.

BAR TYPES

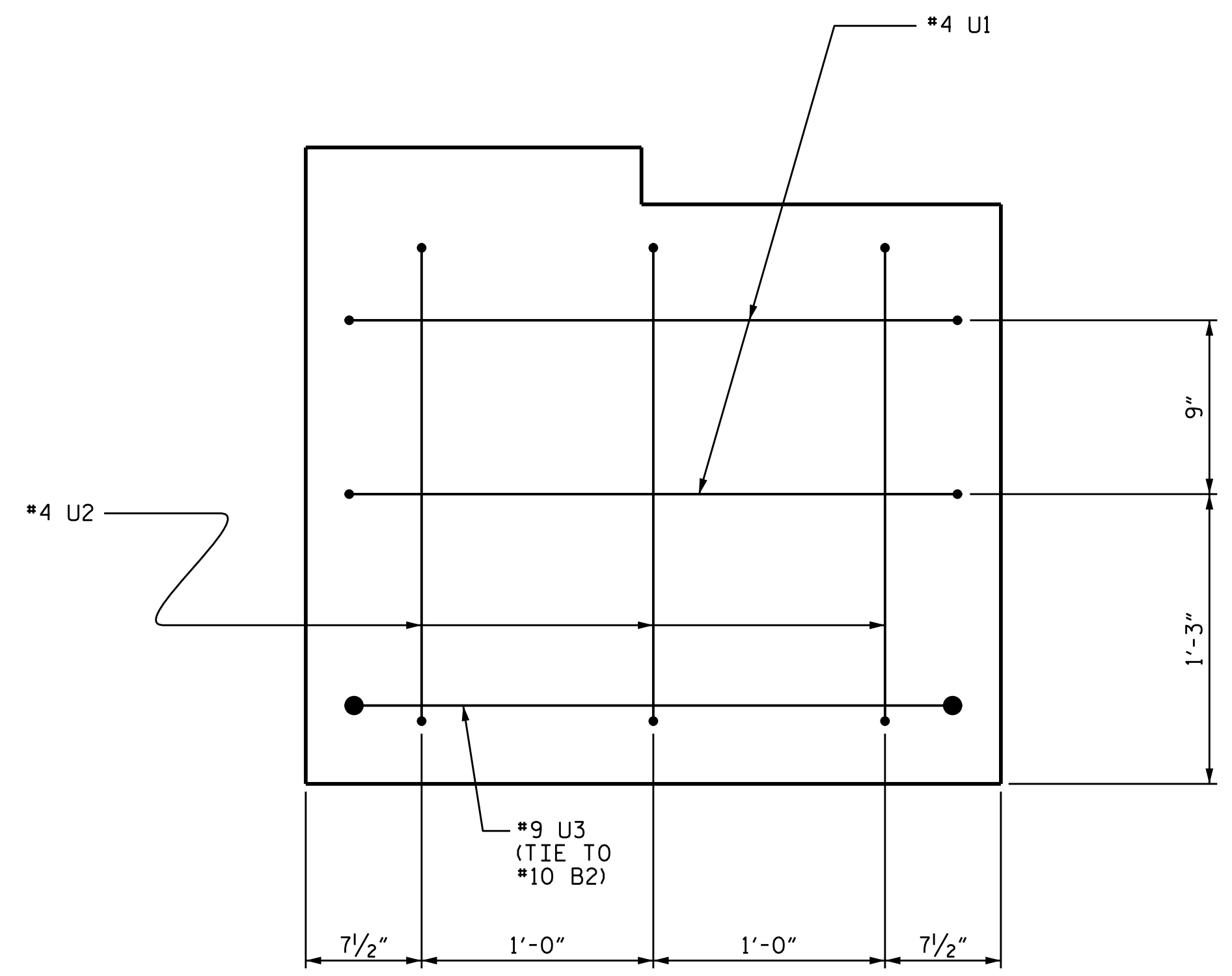


ALL BAR DIMENSIONS ARE OUT TO OUT.



SECTION A-A

(BENT 1 SHOWN, BENT 2 SIMILAR BY ROTATION)



END OF CAP VIEW

(BENT 1 SHOWN, BENT 2 SIMILAR BY ROTATION.) (TYPICAL BOTH ENDS)

PROJECT NO. B-4770
JOHNSTON COUNTY
STATION: 16+10.00 -L-

SHEET 3 OF 4



DocuSigned by: Greg Dickey
6/20/2017

STATE OF NORTH CAROLINA
DEPARTMENT OF TRANSPORTATION
RALEIGH
SUBSTRUCTURE
BENT No. 1 & 2

REVISIONS						SHEET NO.	
NO.	BY:	DATE:	NO.	BY:	DATE:	S-18	
1			3			TOTAL SHEETS 21	
2			4				

DOCUMENT NOT CONSIDERED FINAL UNLESS ALL SIGNATURES COMPLETED

DRAWN BY : P.N.HOLDER	DATE : 07/16
CHECKED BY : S.B.WILLIAMS	DATE : 08/16
DRAWN BY : DGE 05/10	REV. 9/15
CHECKED BY : MKT 05/10	MAA/TMG