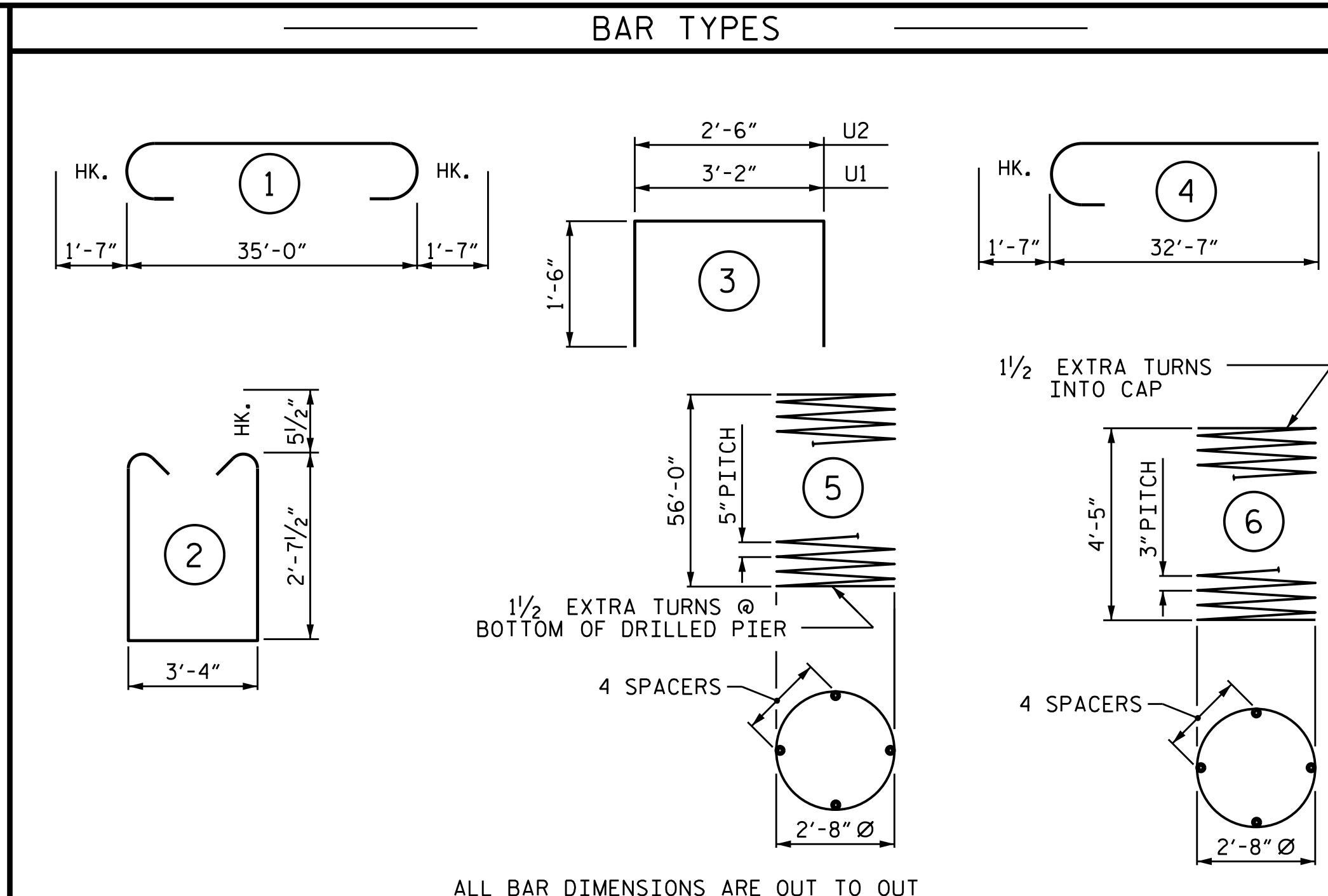
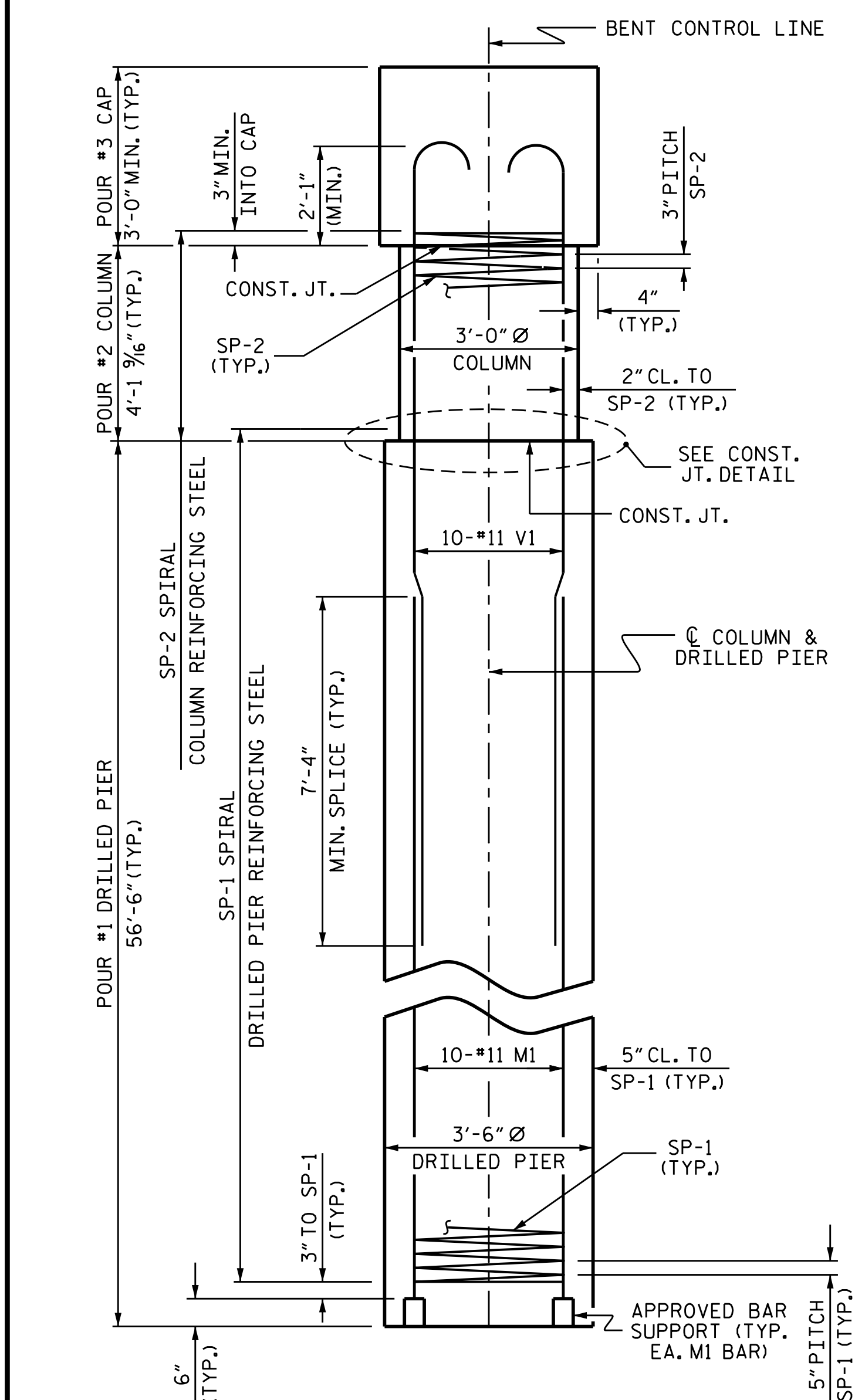


PLAN OF DRILLED PIERS & COLUMNS

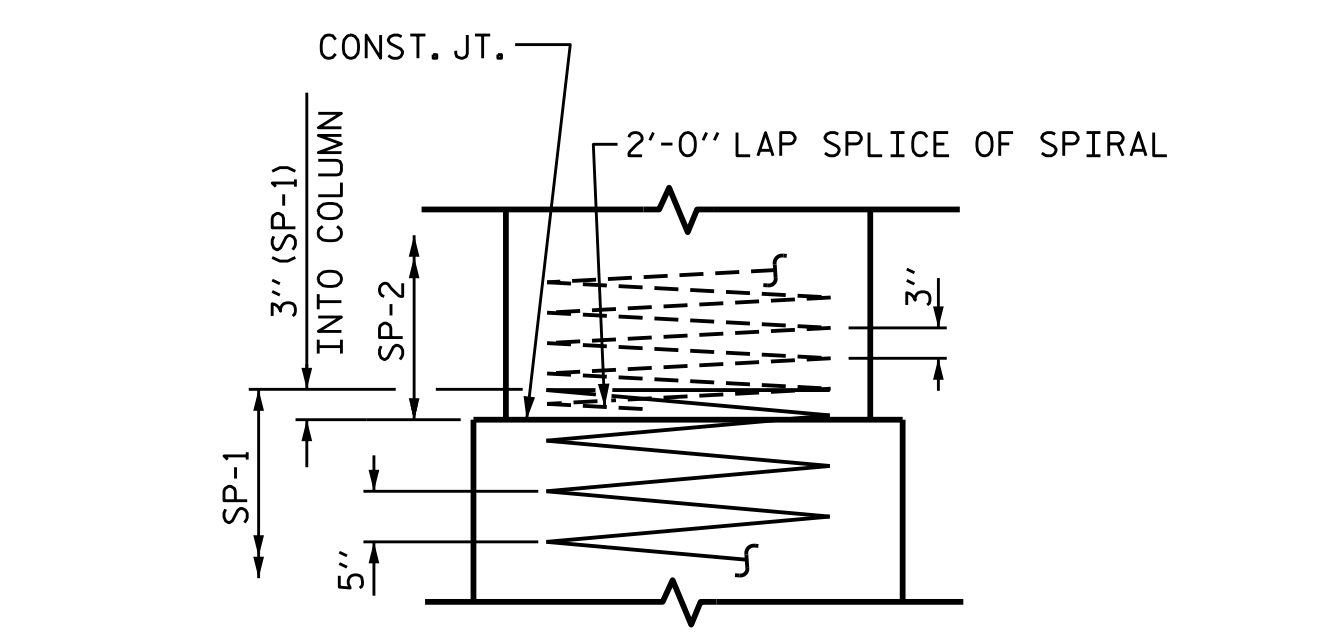


ALL BAR DIMENSIONS ARE OUT TO OUT

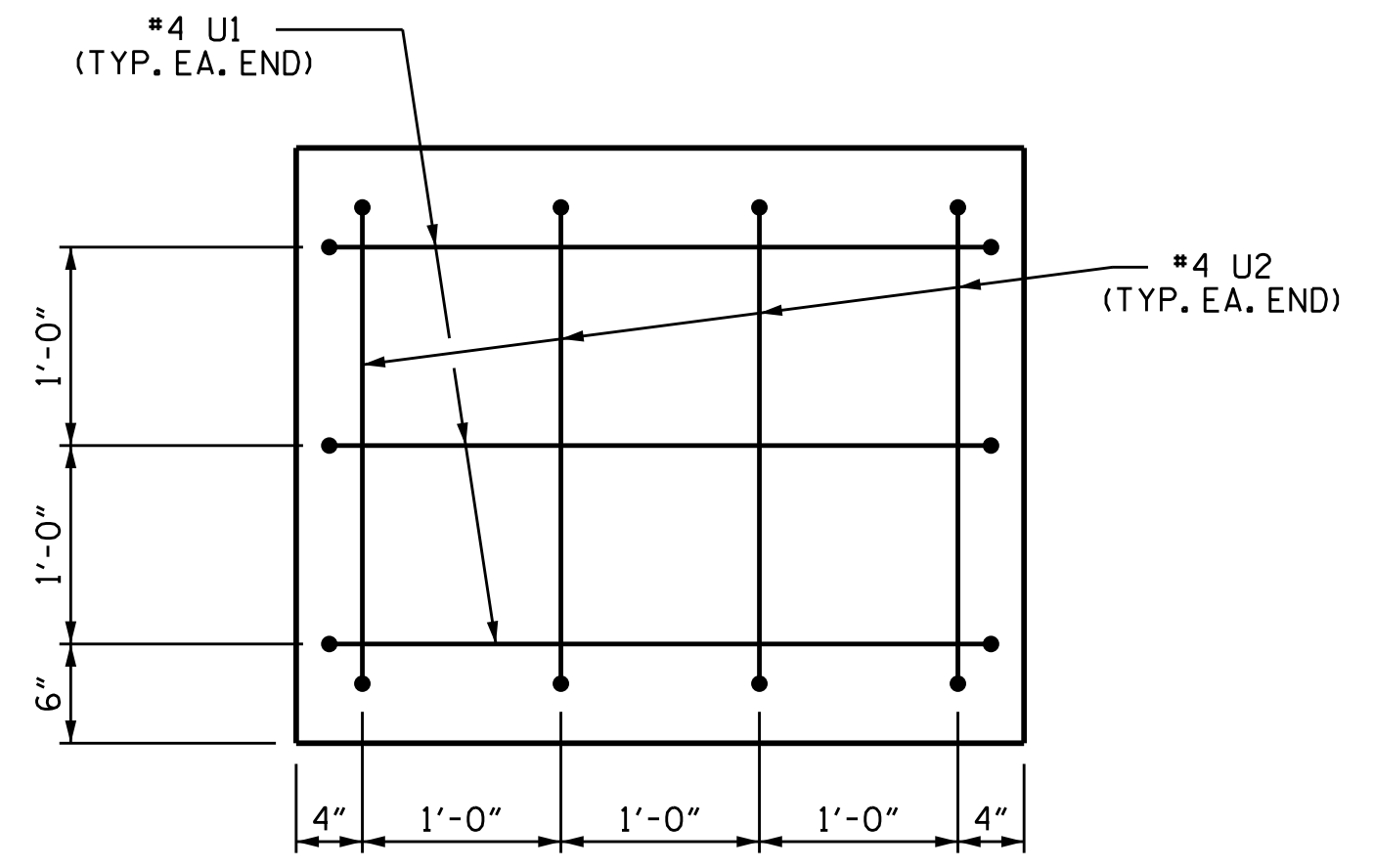
BILL OF MATERIAL FOR BENT #1					
BAR NO.	SIZE	TYPE	LENGTH	WEIGHT	
B1	10	#11	1	38'-2"	2028
B2	6	#5	STR	35'-2"	220
D1	44	#6	STR	1'-6"	99
M1	30	#11	STR	40'-0"	6376
S1	60	#5	2	9'-6"	595
U1	6	#4	3	6'-2"	25
U2	8	#4	3	5'-6"	29
V1	30	#11	4	34'-2"	5446
REINFORCING STEEL (FOR ONE BENT)					14,818 LBS.
SP-1	3	*	5	1118'-6"	3500
SP-2	3	**	6	165'-0"	331
SPIRAL COLUMN REINFORCING STEEL (FOR ONE BENT)					3831 LBS.
* THE SP-1 SPIRAL REINFORCING STEEL SHALL BE W31 OR D-31 COLD DRAWN WIRE OR #5 PLAIN OR DEFORMED BAR					
** THE SP-2 SPIRAL REINFORCING STEEL SHALL BE W20 OR D-20 COLD DRAWN WIRE OR #4 PLAIN OR DEFORMED BAR					



END ELEVATION

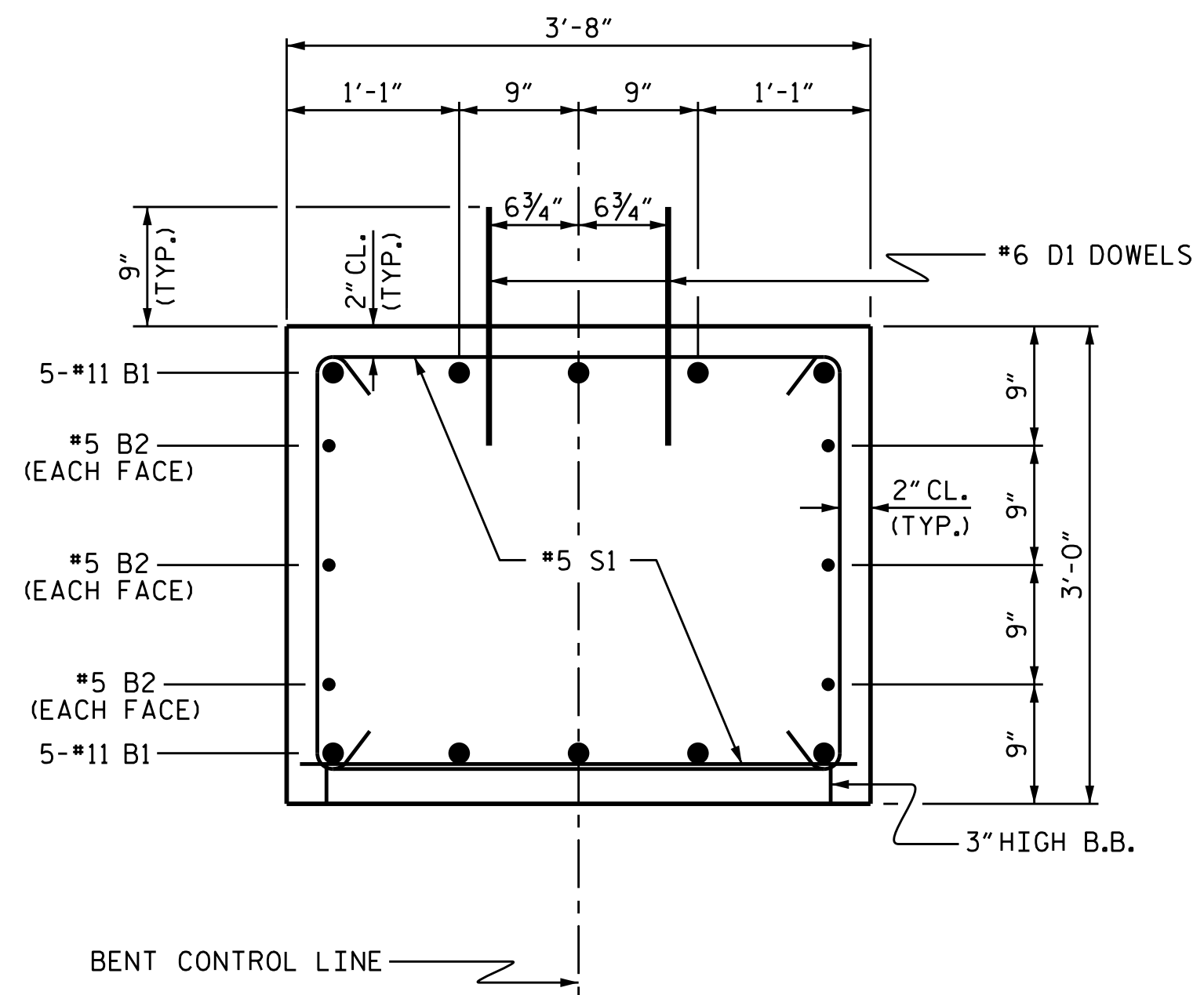


CONSTRUCTION JOINT DETAIL



END OF CAP VIEW

(TYPICAL BOTH ENDS)



SECTION THRU CAP

CLASS A CONCRETE BREAKDOWN (FOR ONE BENT)	
POUR #2 (COLUMNS)	3.2 C.Y.
POUR #3 (CAP)	14.5 C.Y.
TOTAL CLASS A CONCRETE	17.7 C.Y.

DRILLED PIERS; (FOR ONE BENT)	
DRILLED PIER CONCRETE POUR #1 (DRILLED PIERS)	60.4 C.Y.
3'-6" Ø DRILLED PIER NOT IN SOIL	26.0 LIN. FT.
3'-6" Ø DRILLED PIER IN SOIL	143.5 LIN. FT.
PERMANENT STEEL CASING FOR 3'-6" Ø DRILLED PIER	142.1 LIN. FT.
CSL TUBES	696 LIN. FT.

PROJECT NO. B-5327
 PERSON _____ COUNTY _____
 STATION: 13+62.50 -L-
 SHEET 2 OF 2



DocuSigned by:
 William F. Parker
 5/23/2017

DOCUMENT NOT CONSIDERED FINAL UNLESS ALL SIGNATURES COMPLETED

REVISIONS					SHEET NO.
NO.	BY:	DATE:	NO.	DATE:	S-14
1			3		TOTAL SHEETS
2			4		18

ASSEMBLED BY: William F. Parker DATE: 08/2016
 CHECKED BY: A. SORSENGINH DATE: 10/2016
 DRAWN BY: DGE 3/10
 CHECKED BY: MKT 3/10
 REV. 11/14 MAA/TMG

23-MAY-2017 09:48
 R:\Structures\Plans\B5327-SMU.01.BT.dgn
 jdhawk