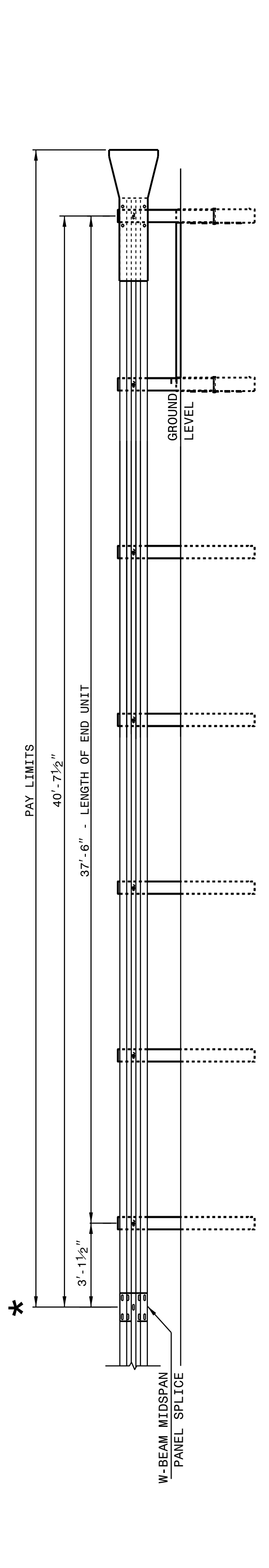


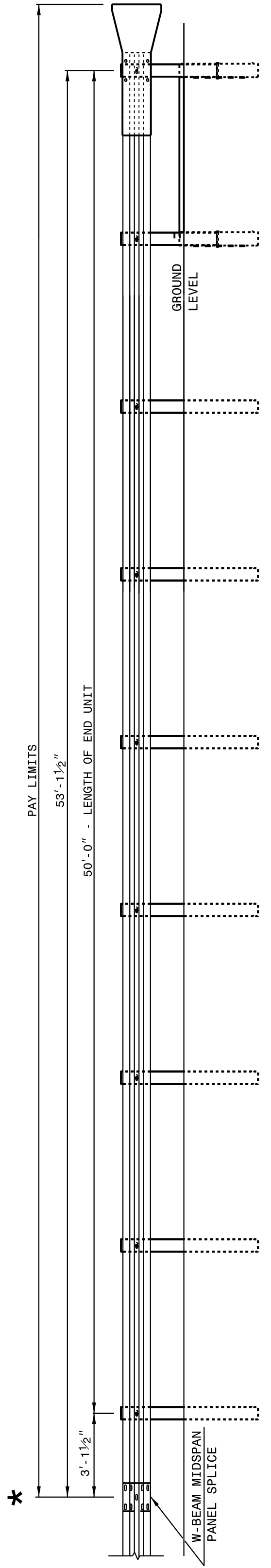
24-MAY-2017 12:41 S:\Contracts\Special Details\Howerton\Standard Drawings\Details in Lieu of Standards\Division 8\862d01 862d03 862d03\862d02.dgn
 J:\Howerton AT_CSD-292955

STATE OF NORTH CAROLINA DEPT. OF TRANSPORTATION DIVISION OF HIGHWAYS RALEIGH, N.C.
 ROADWAY DETAIL DRAWING FOR GUARDRAIL INSTALLATION
 SHEET 2 OF 8
862D02



FLARED AND TANGENT ELEVATION VIEW

* WHEN INSTALLING GUARDRAIL END UNITS THAT ARE 2'-1" MOUNTING HEIGHT TO EXISTING GUARDRAIL, REMOVE THE EXISTING GUARDRAIL TO TRANSITION FROM THE EXISTING HEIGHT TO THE PROPOSED 2'-1" HEIGHT. SEE 862.02, SHEET 4 OF 8 FOR TRANSITION DETAILS.

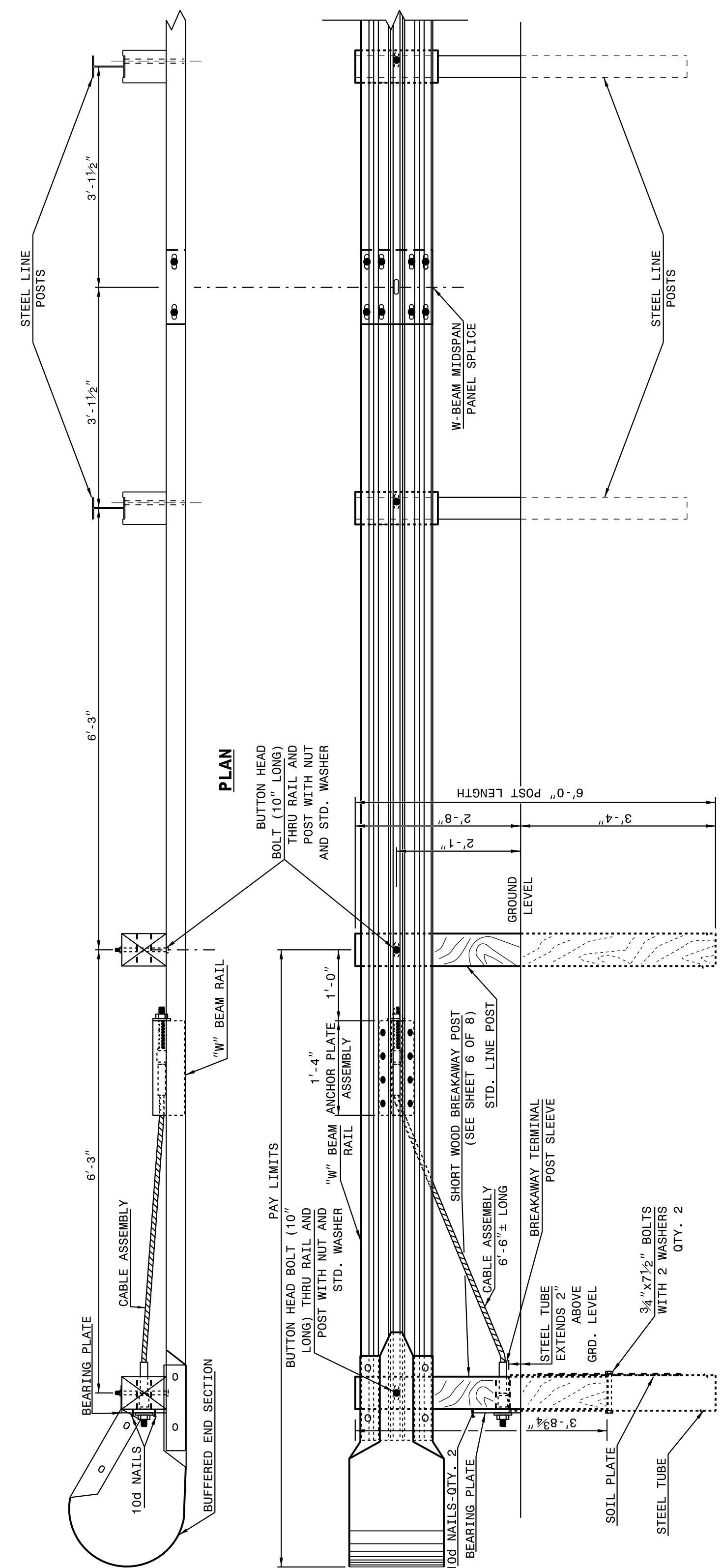


FLARED AND TANGENT ELEVATION VIEW

APPROACH END UNITS

STATE OF NORTH CAROLINA DEPT. OF TRANSPORTATION DIVISION OF HIGHWAYS RALEIGH, N.C.
 ROADWAY DETAIL DRAWING FOR GUARDRAIL INSTALLATION
 SHEET 2 OF 8
862D02

STATE OF NORTH CAROLINA DEPT. OF TRANSPORTATION DIVISION OF HIGHWAYS RALEIGH, N.C.
 ROADWAY DETAIL DRAWING FOR GUARDRAIL INSTALLATION
 SHEET 1 OF 8
862D02



TRAILING END UNIT ASSEMBLY C.A.T.-1 SYSTEM

STATE OF NORTH CAROLINA DEPT. OF TRANSPORTATION DIVISION OF HIGHWAYS RALEIGH, N.C.
 ROADWAY DETAIL DRAWING FOR GUARDRAIL INSTALLATION
 SHEET 1 OF 8
862D02



5/25/2017

DOCUMENT NOT CONSIDERED FINAL UNLESS ALL SIGNATURES COMPLETED

SEE TITLE BLOCK

CONTRACT STANDARDS AND DEVELOPMENT UNIT
 Office 919-707-6950 FAX 919-250-4119

ORIGINAL BY: J. HOWERTON DATE: 06-22-12
 MODIFIED BY: DATE:
 CHECKED BY: DATE:
 FILE SPEC.: