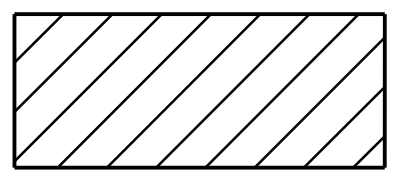


PROJECT REFERENCE NO.	SHEET NO.
B-5348	EC-4/CONST.4
RW SHEET NO.	
ROADWAY DESIGN ENGINEER	HYDRAULICS ENGINEER

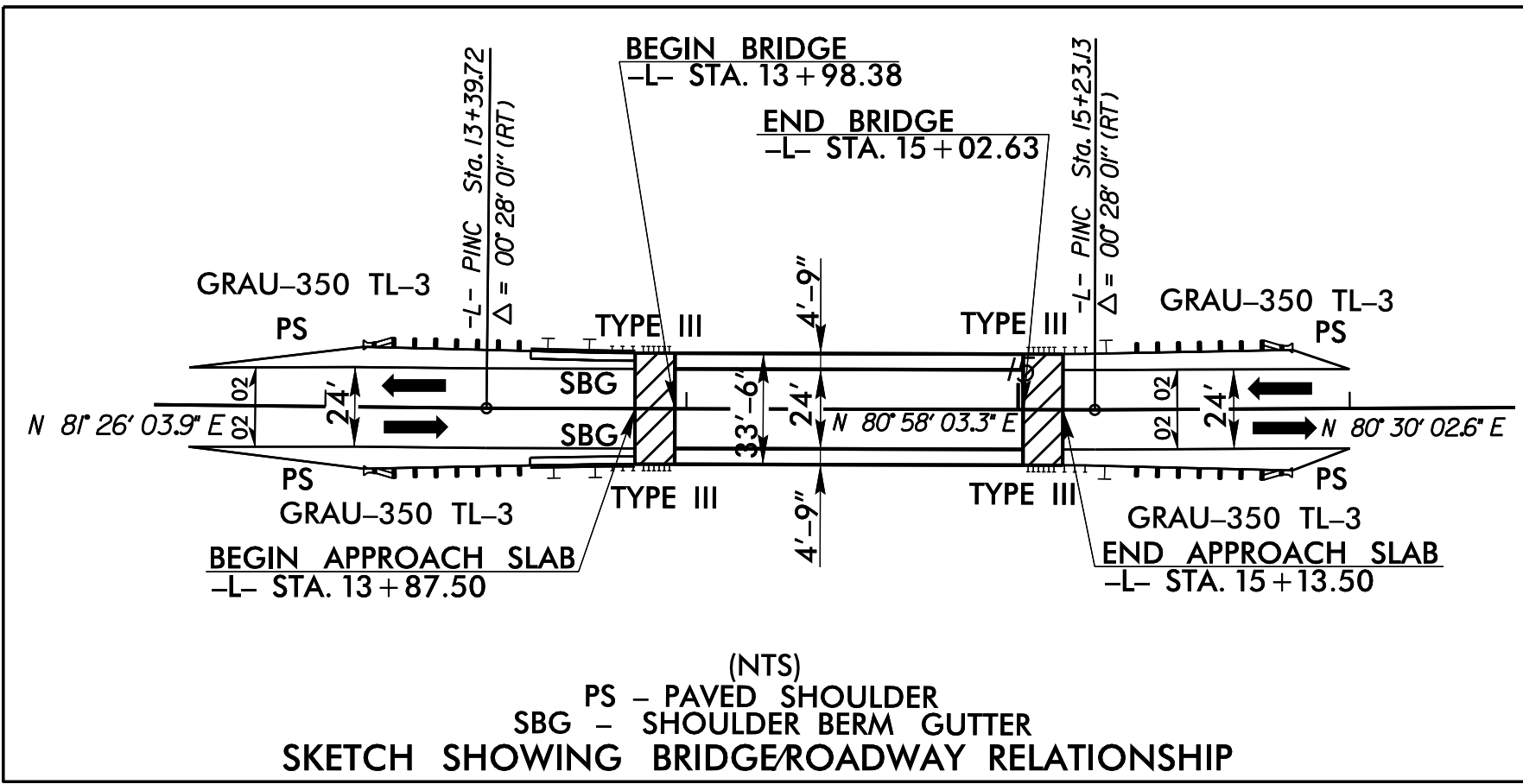
-L-
 $Pi Sta. 11+50.27$
 $\Delta = 0^{\circ}42'15.0" (RT)$
 $D = 1^{\circ}07'14.7"$
 $L = 62.83'$
 $T = 31.42'$
 $R = 5,112.28'$
 $SE = SEE PLANS$



ENVIRONMENTALLY SENSITIVE AREA
SEE PROJECT SPECIAL PROVISIONS

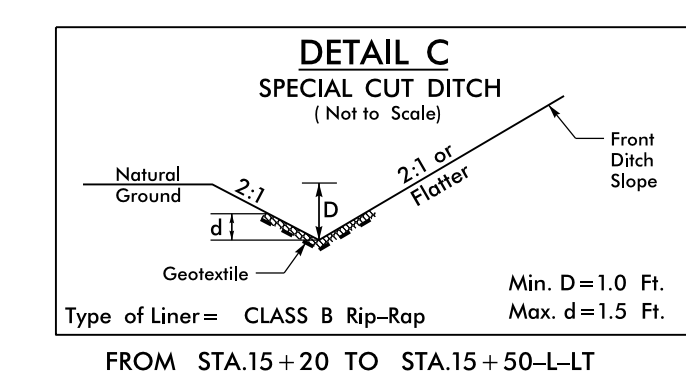
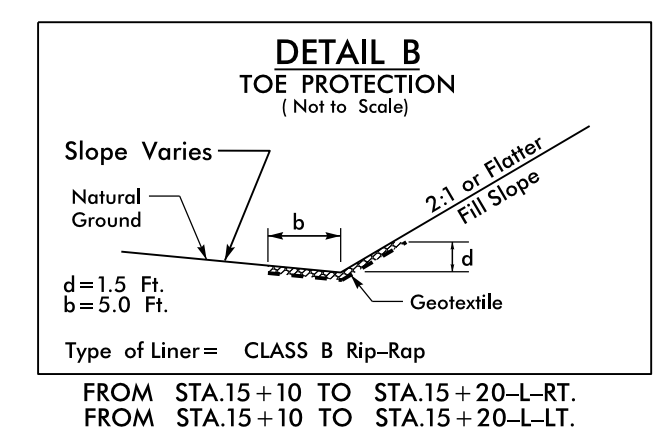
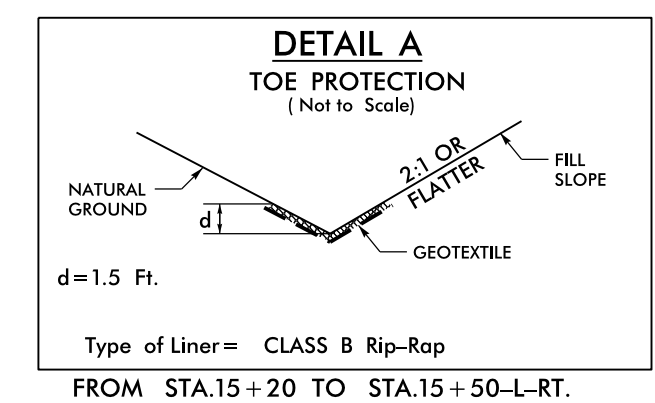
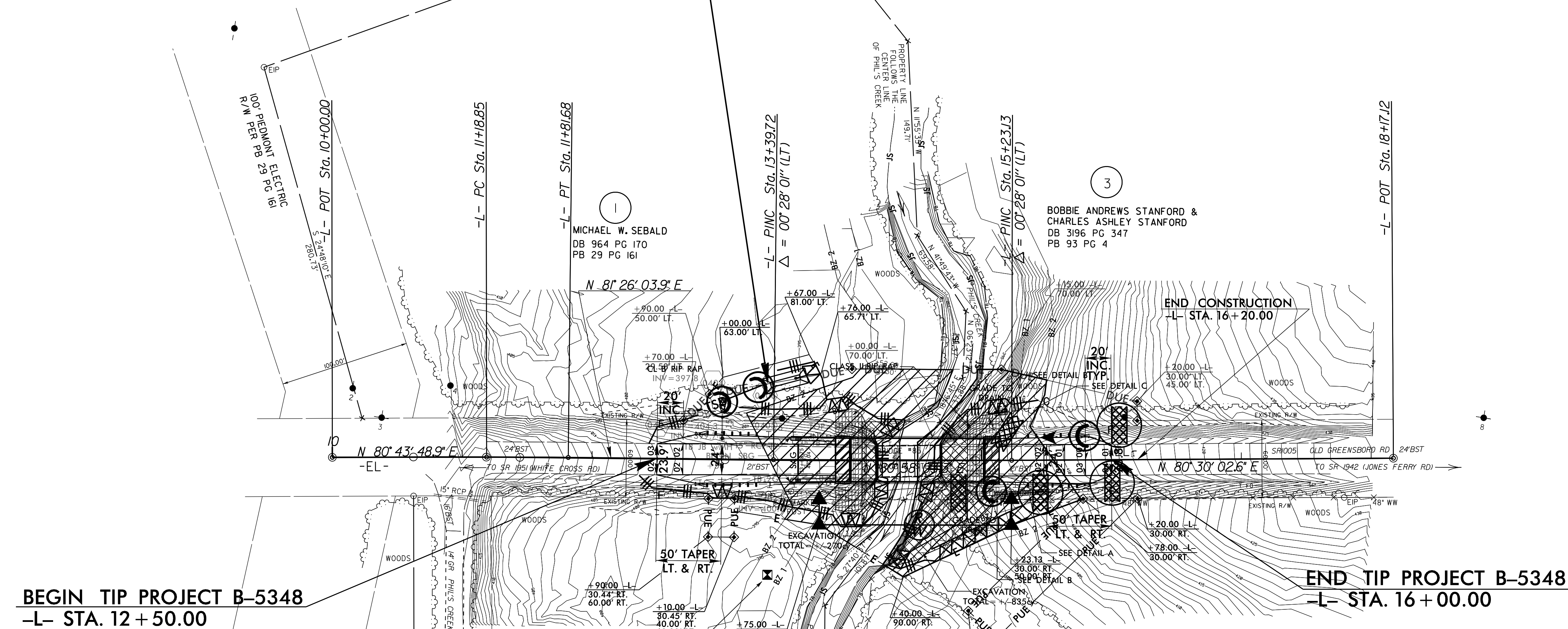
NOTE: UTILIZE SPECIAL STILLING BASIN(S) WHERE APPLICABLE

34 x 12 x 3
 1.5 inch Skimmer
 with 0.375 inch
 Orifice Diameter
 4 ft. weir
 ID 4.1



CLEARING AND GRUBBING
 EROSION CONTROL FOR
 CONSTRUCTION SHEET 4

NAD 83 NA 2011



NOTE: PLACE TEMPORARY ROCK SEDIMENT DAMS TYPE - B AND TEMPORARY ROCK SILT CHECKS TYPE - A AT DRAINAGE OUTLETS.

SEE SHEET 5 FOR PROFILE
 SEE SHEETS S-1 THRU S-? FOR STRUCTURE PLANS

REVISIONS

8/17/99
 21-MAR-2011 13:22
 R:\V\Ar\Ar\Projects\B5348_EC.psh.dgn
 269782