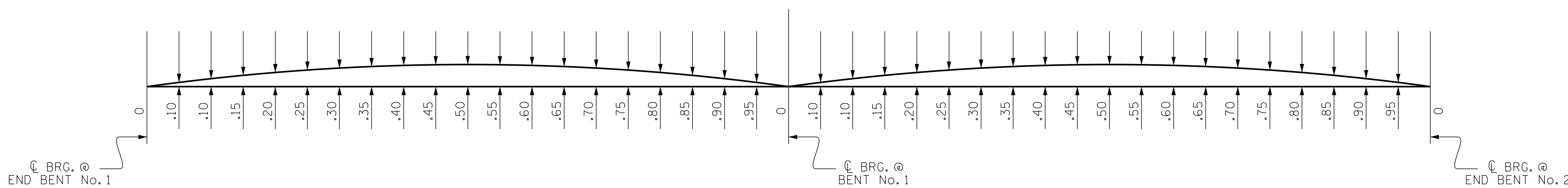


DEAD LOAD DEFLECTION TABLE FOR GIRDERS																					
SPAN A - GIRDERS 1 THRU 4																					
TWENTIETH POINTS	0	.05	.10	.15	.20	.25	.30	.35	.40	.45	.50	.55	.60	.65	.70	.75	.80	.85	.90	.95	0
DEFLECTION DUE TO WEIGHT OF GIRDER ↓	0.000	0.005	0.010	0.014	0.018	0.021	0.023	0.025	0.025	0.025	0.024	0.022	0.020	0.017	0.014	0.010	0.007	0.004	0.002	0.001	0.000
DEFLECTION DUE TO WEIGHT OF SLAB * ↓	0.000	0.020	0.039	0.057	0.072	0.084	0.093	0.099	0.102	0.101	0.096	0.089	0.079	0.067	0.054	0.041	0.028	0.017	0.008	0.002	0.000
DEFLECTION DUE TO WEIGHT OF BARRIER RAIL ↓	0.000	0.003	0.005	0.008	0.010	0.012	0.013	0.014	0.014	0.014	0.013	0.012	0.011	0.010	0.008	0.006	0.004	0.003	0.001	0.000	0.000
TOTAL DEAD LOAD DEFLECTION ↓	0.000	0.028	0.054	0.079	0.100	0.117	0.129	0.138	0.141	0.140	0.133	0.123	0.110	0.094	0.076	0.057	0.039	0.024	0.011	0.003	0.000
VERTICAL CURVE ORDINATE ↑	0.000	0.024	0.045	0.064	0.080	0.094	0.106	0.114	0.121	0.124	0.126	0.124	0.121	0.114	0.106	0.094	0.080	0.064	0.045	0.024	0.000
REQUIRED CAMBER ↑	0	5/16"	13/16"	11/16"	23/16"	29/16"	213/16"	3"	31/8"	33/16"	31/8"	215/16"	23/4"	21/2"	23/16"	113/16"	17/16"	11/16"	11/16"	5/16"	0

\* INCLUDES SLAB, BUILDUPS & STAY-IN-PLACE FORMS.  
ALL VALUES ARE SHOWN IN FEET (DECIMAL FORM), EXCEPT "FINAL CAMBER", WHICH IS GIVEN IN INCHES (FRACTION FORM).

DEAD LOAD DEFLECTION TABLE FOR GIRDERS																					
SPAN B - GIRDERS 1 THRU 4																					
TWENTIETH POINTS	0	.05	.10	.15	.20	.25	.30	.35	.40	.45	.50	.55	.60	.65	.70	.75	.80	.85	.90	.95	0
DEFLECTION DUE TO WEIGHT OF GIRDER ↓	0.000	0.001	0.002	0.004	0.007	0.010	0.014	0.017	0.020	0.022	0.024	0.025	0.025	0.025	0.023	0.021	0.018	0.014	0.010	0.005	0.000
DEFLECTION DUE TO WEIGHT OF SLAB * ↓	0.000	0.002	0.008	0.017	0.028	0.041	0.054	0.067	0.079	0.089	0.096	0.101	0.102	0.099	0.093	0.084	0.072	0.057	0.039	0.020	0.000
DEFLECTION DUE TO WEIGHT OF BARRIER RAIL ↓	0.000	0.000	0.001	0.003	0.004	0.006	0.008	0.010	0.011	0.012	0.013	0.014	0.014	0.014	0.013	0.012	0.010	0.008	0.005	0.003	0.000
TOTAL DEAD LOAD DEFLECTION ↓	0.000	0.003	0.011	0.024	0.039	0.057	0.076	0.094	0.110	0.123	0.133	0.140	0.141	0.138	0.129	0.117	0.100	0.079	0.054	0.028	0.000
VERTICAL CURVE ORDINATE ↑	0.000	0.024	0.045	0.064	0.080	0.094	0.106	0.114	0.121	0.124	0.126	0.124	0.121	0.114	0.106	0.094	0.080	0.064	0.045	0.024	0.000
REQUIRED CAMBER ↑	0	5/16"	11/16"	11/16"	17/16"	113/16"	23/16"	21/2"	23/4"	215/16"	31/8"	33/16"	31/8"	3"	213/16"	29/16"	23/16"	111/16"	13/16"	5/8"	0

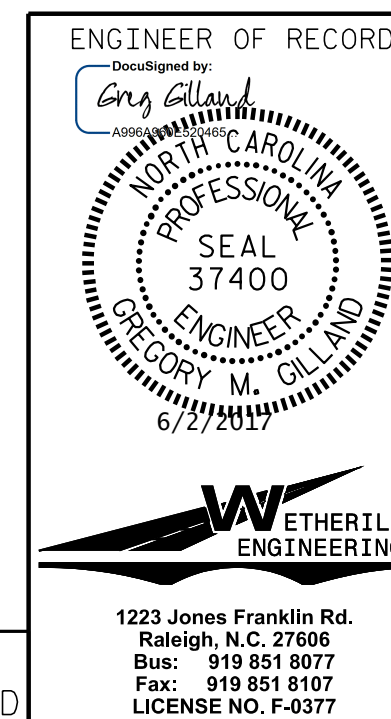
\* INCLUDES SLAB, BUILDUPS & STAY-IN-PLACE FORMS.  
ALL VALUES ARE SHOWN IN FEET (DECIMAL FORM), EXCEPT "FINAL CAMBER", WHICH IS GIVEN IN INCHES (FRACTION FORM).



**SCHEMATIC CAMBER ORDINATES**

SLOPE FOR THE ZERO CAMBER BASE LINE VARIES.

PROJECT NO. I-5786  
JOHNSTON COUNTY  
STATION: 20+25.64 -Y4-



STATE OF NORTH CAROLINA  
DEPARTMENT OF TRANSPORTATION  
RALEIGH

SUPERSTRUCTURE  
DEAD LOAD  
DEFLECTION TABLES

REVISIONS						SHEET NO.
NO.	BY:	DATE:	NO.	BY:	DATE:	S02-14
1			3			TOTAL SHEETS
2			4			31

DRAWN BY: D. HODGE DATE: 4/17  
CHECKED BY: B.C. HUNT DATE: 4/17

DOCUMENT NOT CONSIDERED FINAL  
UNLESS ALL SIGNATURES COMPLETED