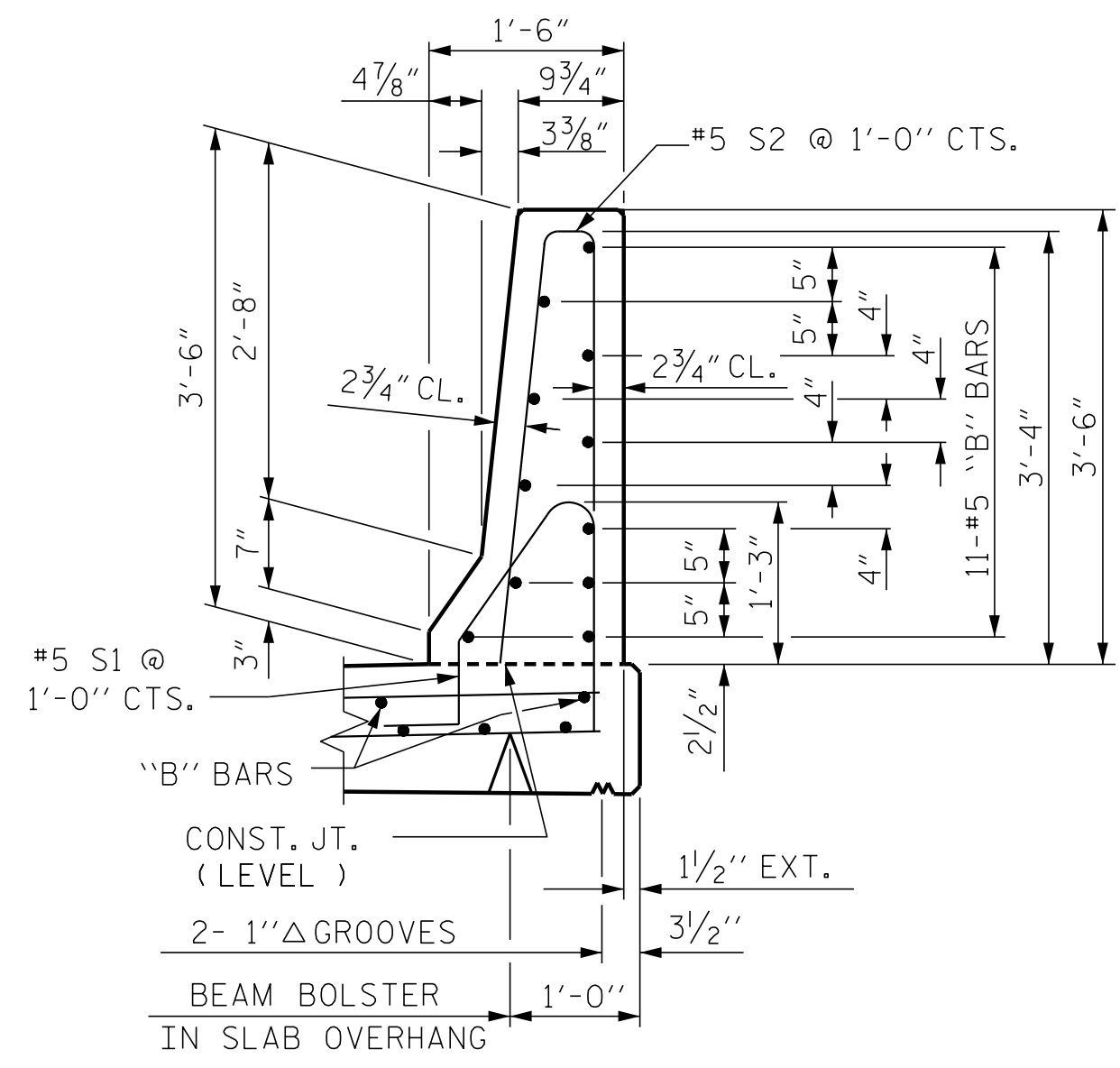
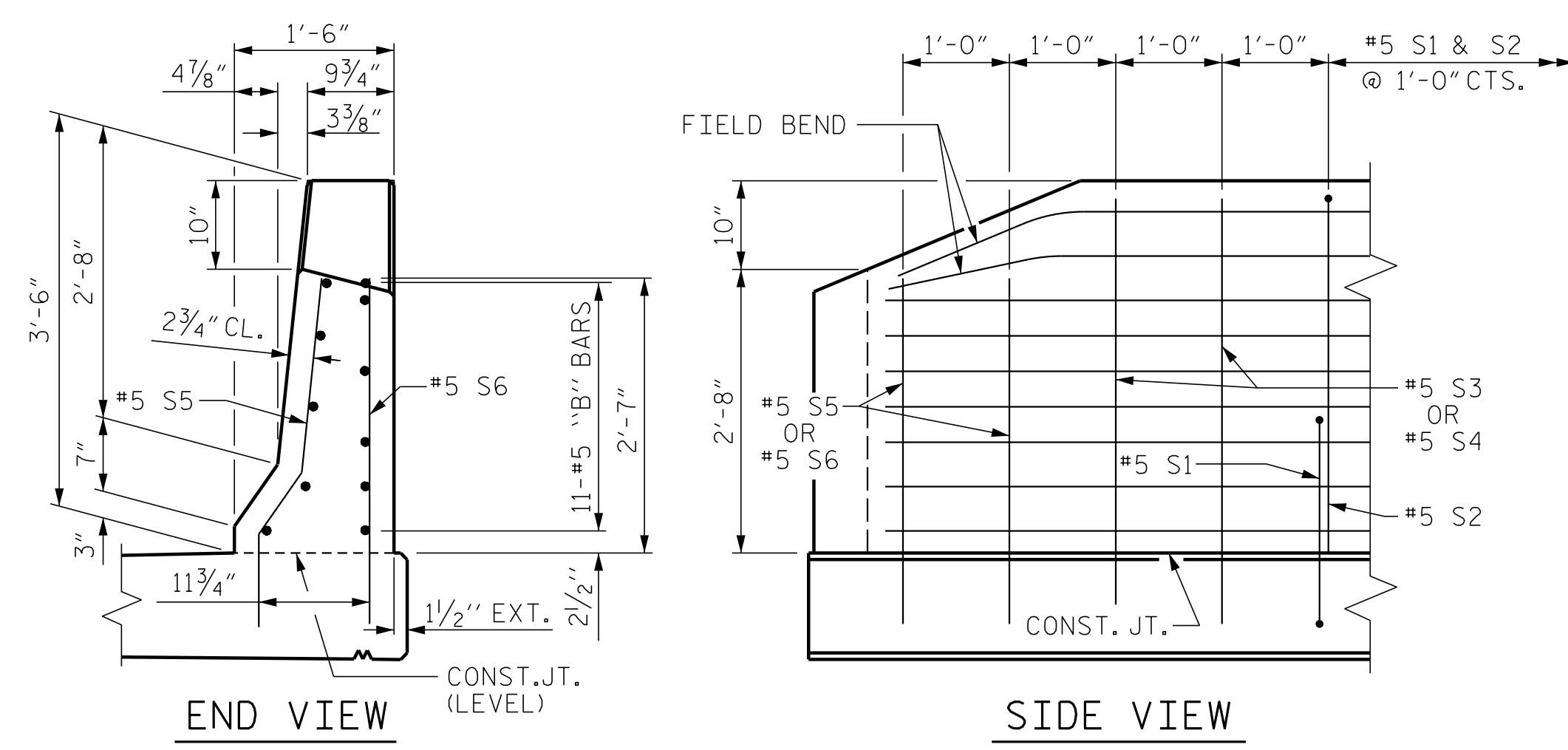


PLAN



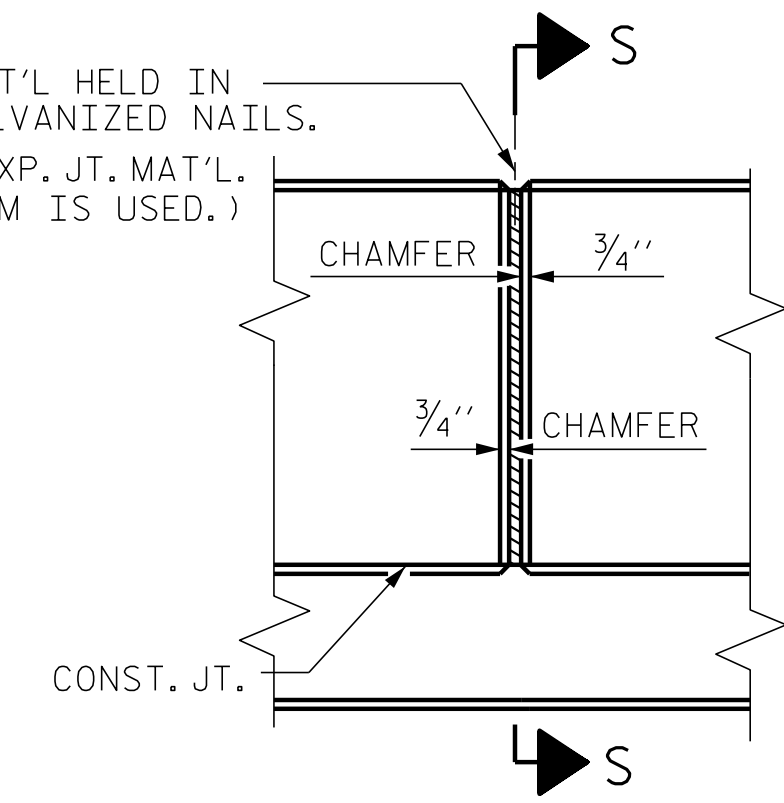
SECTION THRU RAIL



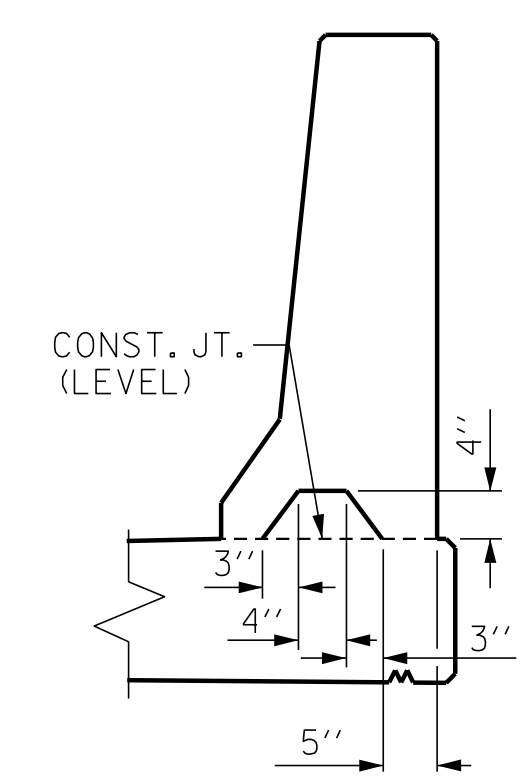
END OF RAIL DETAILS

FOR ADHESIVE ANCHORING AT SAWED JOINTS

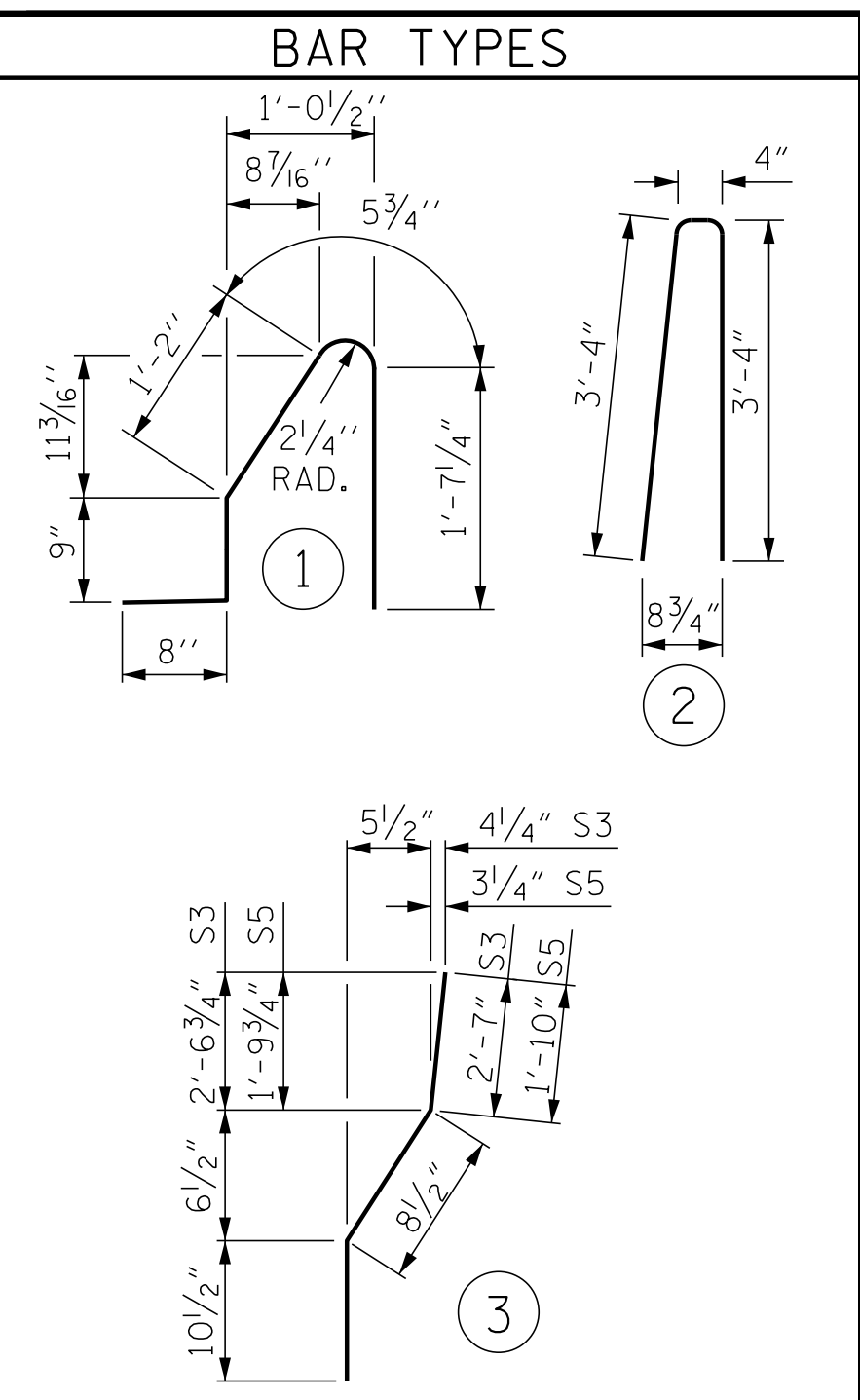
1/2" EXP. JT. MAT'L HELD IN PLACE WITH GALVANIZED NAILS.
(NOTE: OMIT EXP. JT. MAT'L WHEN SLIP FORM IS USED.)



ELEVATION AT EXPANSION JOINTS
BARRIER RAIL DETAILS



SECTION S-S
AT DAM IN OPEN JOINT
(THIS IS TO BE USED ONLY WHEN SLIP FORM IS USED)



ALL BAR DIMENSIONS ARE OUT TO OUT

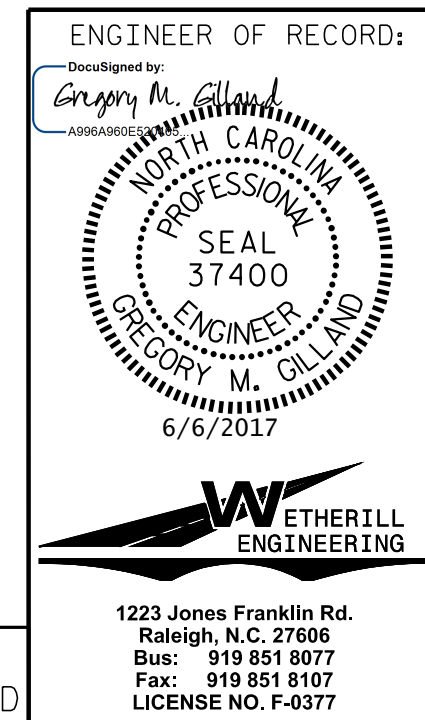
BILL OF MATERIAL

FOR CONCRETE BARRIER RAIL ONLY

| BAR | NO. | SIZE | TYPE | LENGTH | WEIGHT |
|------|-----|------|------|---------|--------|
| * S1 | 574 | #5 | 1 | 4'-8" | 2794 |
| * S2 | 574 | #5 | 2 | 7'-0" | 4191 |
| * S3 | 4 | #5 | 3 | 4'-2" | 17 |
| * S4 | 4 | #5 | STR | 4'-0" | 17 |
| * S5 | 10 | #5 | 3 | 3'-5" | 36 |
| * S6 | 10 | #5 | STR | 3'-3" | 34 |
| * B1 | 88 | #5 | STR | 15'-10" | 1453 |
| * B2 | 176 | #5 | STR | 29'-7" | 5431 |

* EPOXY COATED REINFORCING STEEL 13,973 LBS.
CLASS AA CONCRETE 79.7 CU. YDS.
CONCRETE BARRIER RAIL 586.60 LIN. FT.

PROJECT NO. I-5786
JOHNSTON COUNTY
STATION: 17+77.11 -Y1-
SHEET 2 OF 2



| REVISIONS | | | | | | SHEET NO. |
|-----------|-----|-------|-----|-----|-------|--------------|
| NO. | BY: | DATE: | NO. | BY: | DATE: | S01-18 |
| 1 | | | 3 | | | TOTAL SHEETS |
| 2 | | | 4 | | | 32 |

DOCUMENT NOT CONSIDERED FINAL UNLESS ALL SIGNATURES COMPLETED

PA:2017-1-5786 Structures\DGN\LizzeMill_Y1-I-5786-Y1_CBR_WE I.dgn
 6/6/2017 8:33:22 AM

| | |
|-------------------------|---------------------|
| ASSEMBLED BY : D. HODGE | DATE : 4/17 |
| CHECKED BY : B.C. HUNT | DATE : 5/17 |
| DRAWN BY : ARB 5/87 | REV. 10/1/11 MAA/GM |
| CHECKED BY : SJD 9/87 | REV. 7/12 MAA/GM |
| | REV. 6/13 MAA/GM |

1223 Jones Franklin Rd.
Raleigh, N.C. 27606
Bus: 919 851 8077
Fax: 919 851 8107
LICENSE NO. F-0377