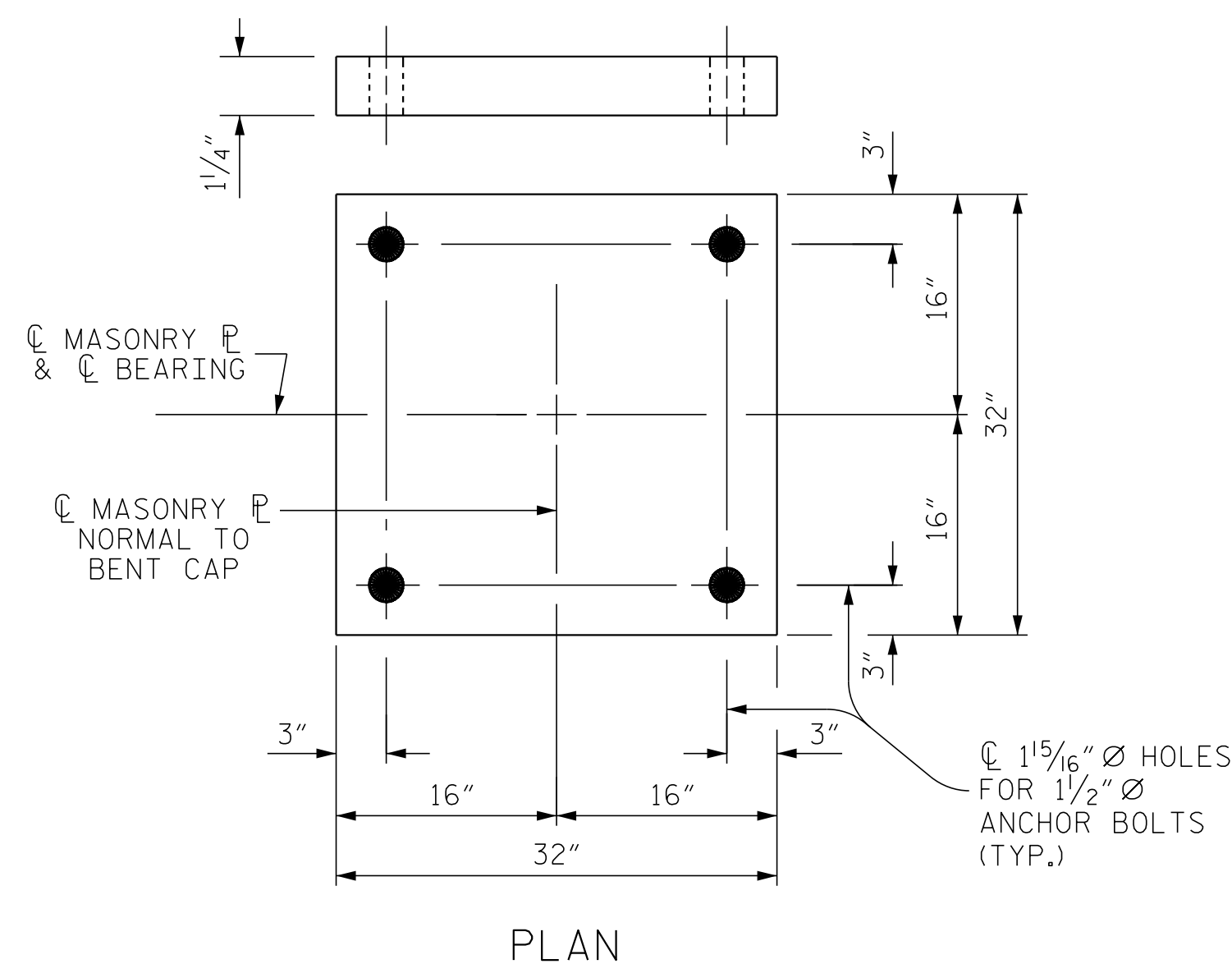
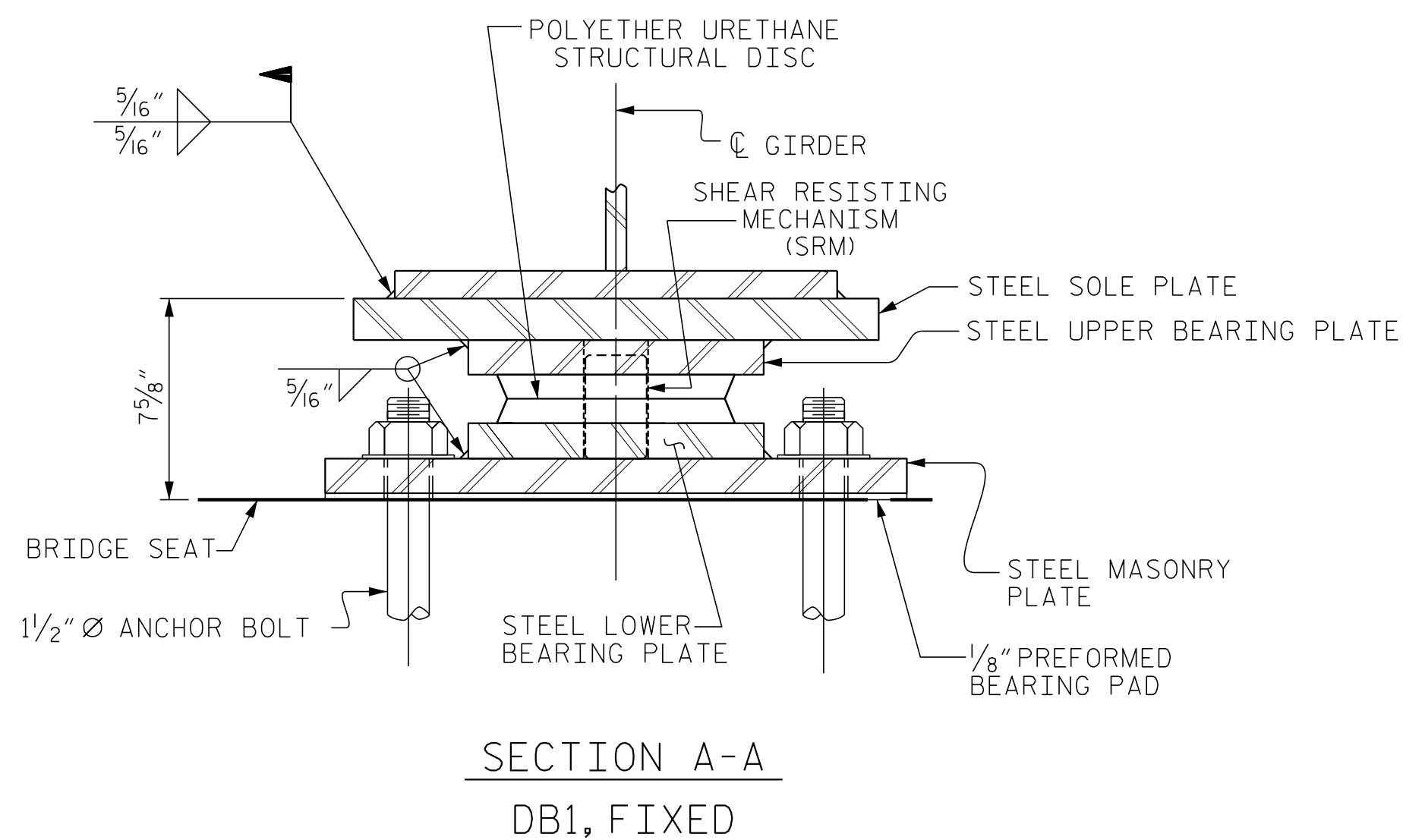


NOTE:
DIMENSIONS "W" AND "T" SHALL BE DETERMINED BY THE BEARING MANUFACTURER.

SOLE PLATE DETAILS



MASONRY PLATE DETAILS

NOTES

FOR DISC BEARINGS, SEE SPECIAL PROVISIONS.

ALL BEARING PLATES SHALL BE AASHTO M270 GRADE 50W OR GRADE 50.

AT ALL POINTS OF SUPPORT, NUTS FOR ANCHOR BOLTS SHALL BE FINGER-TIGHTENED PLUS AN ADDITIONAL 1/4 TURN. THE THREAD OF THE NUT AND BOLT SHALL THEN BE BURRED WITH A SHARP POINTED TOOL.

WHEN WELDING THE SOLE PLATE TO THE GIRDER, USE TEMPERATURE INDICATING WAX PENS, OR OTHER SUITABLE MEANS, TO ENSURE THAT THE TEMPERATURE OF THE BEARING DOES NOT EXCEED 250°F. TEMPERATURES ABOVE THIS MAY DAMAGE THE TFE OR URETHANE DISC.

SOLE PLATES SHOULD BE WELDED TO GIRDER FLANGES BEFORE FALSEWORK IS PLACED.

ALL SURFACES OF BEARING PLATES SHALL BE SMOOTH AND STRAIGHT.

FOR THERMAL SPRAYED COATINGS (METALLIZATION), SEE SPECIAL PROVISIONS.

THE MINIMUM ROTATIONAL CAPACITY FOR ALL BEARINGS SHALL BE 0.02 RADIAN.

PROJECT NO. I-5786
JOHNSTON COUNTY
 STATION: 17+77.11 -Y1-

P:\2017\I-5786\Structures\DCM\LizzieMill_Y1\I-5786-Y1_BRG_WE_I.dgn
 6/6/2017 8:22:21 AM

LOADS AND MOVEMENT

| DESIGNATIONS | LOCATION | NUMBER OF BEARINGS | UNFACTORED VERTICAL LOAD (KIPS) | | | FACTORED HORIZONTAL LOAD (KIPS) | ONE-WAY MOVEMENT (IN.) |
|--------------|----------|--------------------|---------------------------------|------|-------|---------------------------------|------------------------|
| | | | DEAD | LIVE | LL+IM | | |
| BEARINGS | MASONRY | | DC | DW | LL+IM | | |
| DB1 (FIXED) | M1 | 4 | 405 | 51 | 453 | 171 | 0.0 |

DRAWN BY : D. HODGE DATE : 4/17
 CHECKED BY : B.C. HUNT DATE : 5/17

DOCUMENT NOT CONSIDERED FINAL
UNLESS ALL SIGNATURES COMPLETED

ENGINEER OF RECORD:
 Greg M. O'Neil
 PROFESSIONAL SEAL 37400
 GREGORY M. O'NEIL
 6/6/2017

ETHERILL ENGINEERING
 1223 Jones Franklin Rd.
 Raleigh, N.C. 27606
 Bus: 919 851 8077
 Fax: 919 851 8107
 LICENSE NO. F-0377

STATE OF NORTH CAROLINA
 DEPARTMENT OF TRANSPORTATION
 RALEIGH

DISC BEARING DETAILS

| REVISIONS | | | | | | SHEET NO. |
|-----------|-----|-------|-----|-----|-------|--------------|
| NO. | BY: | DATE: | NO. | BY: | DATE: | TOTAL SHEETS |
| 1 | | | 3 | | | 32 |
| 2 | | | 4 | | | |