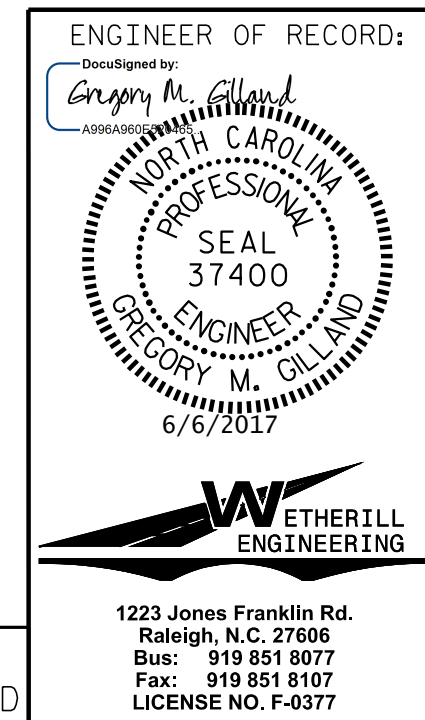


FOUNDATION LAYOUT

NOTES:

- FOR PILES, SEE GEOTECHNICAL SPECIAL PROVISIONS AND SECTION 450 OF THE STANDARD SPECIFICATIONS.
- FOR DRILLED PIERS, SEE GEOTECHNICAL SPECIAL PROVISIONS AND SECTION 411 OF THE STANDARD SPECIFICATIONS.
- PILES AT END BENT NOS.1 AND 2 ARE DESIGNED FOR A FACTORED RESISTANCE OF 80 TONS PER PILE.
- DRILLED PIERS AT BENT NO.1 ARE DESIGNED FOR A FACTORED RESISTANCE OF 690 TONS PER PIER. CHECK FIELD CONDITIONS FOR THE REQUIRED TIP RESISTANCE OF 95 TSF.
- DRIVE PILES AT END BENT NO.1 TO A REQUIRED DRIVING RESISTANCE OF 160 TONS PER PILE.
- INSTALL DRILLED PIERS AT BENT NO.1, LEFT AND CENTER, TO A TIP ELEVATION NO HIGHER THAN 132.0 WITH THE REQUIRED TIP RESISTANCE.
- DRIVE PILES AT END BENT NO.2 TO A REQUIRED DRIVING RESISTANCE OF 165 TONS PER PILE.
- INSTALL DRILLED PIERS AT BENT NO.1, RIGHT, TO A TIP ELEVATION NO HIGHER THAN 134.0 WITH THE REQUIRED TIP RESISTANCE.
- TESTING PILES WITH THE PDA DURING DRIVING, RESTRIKING OR REDRIVING MAY BE REQUIRED. THE ENGINEER WILL DETERMINE THE NEED FOR PDA TESTING. FOR PDA TESTING, SEE SECTION 450 OF THE STANDARD SPECIFICATIONS.
- SID INSPECTIONS MAY BE REQUIRED FOR DRILLED PIERS. THE ENGINEER WILL DETERMINE THE NEED FOR SID INSPECTIONS. FOR SID INSPECTIONS, SEE SECTION 411 OF THE STANDARD SPECIFICATIONS.
- CSL TUBES ARE REQUIRED AND CSL TESTING MAY BE REQUIRED FOR DRILLED PIERS. THE ENGINEER WILL DETERMINE THE NEED FOR CSL TESTING. FOR CSL TESTING, SEE SECTION 411 OF THE STANDARD SPECIFICATIONS.
- SPT IS REQUIRED FOR DRILLED PIERS AT BENT NO.1. FOR SPT TESTING, SEE SECTION 411 OF THE STANDARD SPECIFICATIONS.
- OBSERVE A ONE MONTH WAITING PERIOD AFTER CONSTRUCTING THE EMBANKMENT TO WITHIN 2 FEET OF FINISHED GRADE BEFORE BEGINNING END BENT CONSTRUCTION AT END BENT NOS.1 AND 2. FOR BRIDGE WAITING PERIODS, SEE ROADWAY PLANS AND SPECIAL PROVISIONS.

PROJECT NO. I-5786
JOHNSTON COUNTY
 STATION: 17+77.11 -Y1-
 SHEET 2 OF 3



STATE OF NORTH CAROLINA
 DEPARTMENT OF TRANSPORTATION
 RALEIGH

GENERAL DRAWING
 FOR BRIDGE ON LIZZIE MILL
 RD. (SR1001) OVER I-95
 BETWEEN SELMA AND PINE
 LEVEL MICRO RD.

REVISIONS						SHEET NO.
NO.	BY:	DATE:	NO.	BY:	DATE:	S01-2
1			3			TOTAL SHEETS
2			4			32

1223 Jones Franklin Rd.
 Raleigh, N.C. 27606
 Bus: 919 851 8077
 Fax: 919 851 8107
 LICENSE NO. F-0377

DRAWN BY : B.C. HUNT DATE : 5-17
 CHECKED BY : T.V. ROUNTREE DATE : 5-17

DOCUMENT NOT CONSIDERED FINAL
 UNLESS ALL SIGNATURES COMPLETED

P:\2017\I-5786\Structures\DGN\LizzieMill_Y1-I-5786-Y1_FL_ME_I.dgn
 6/6/2017 6:09:39 AM