

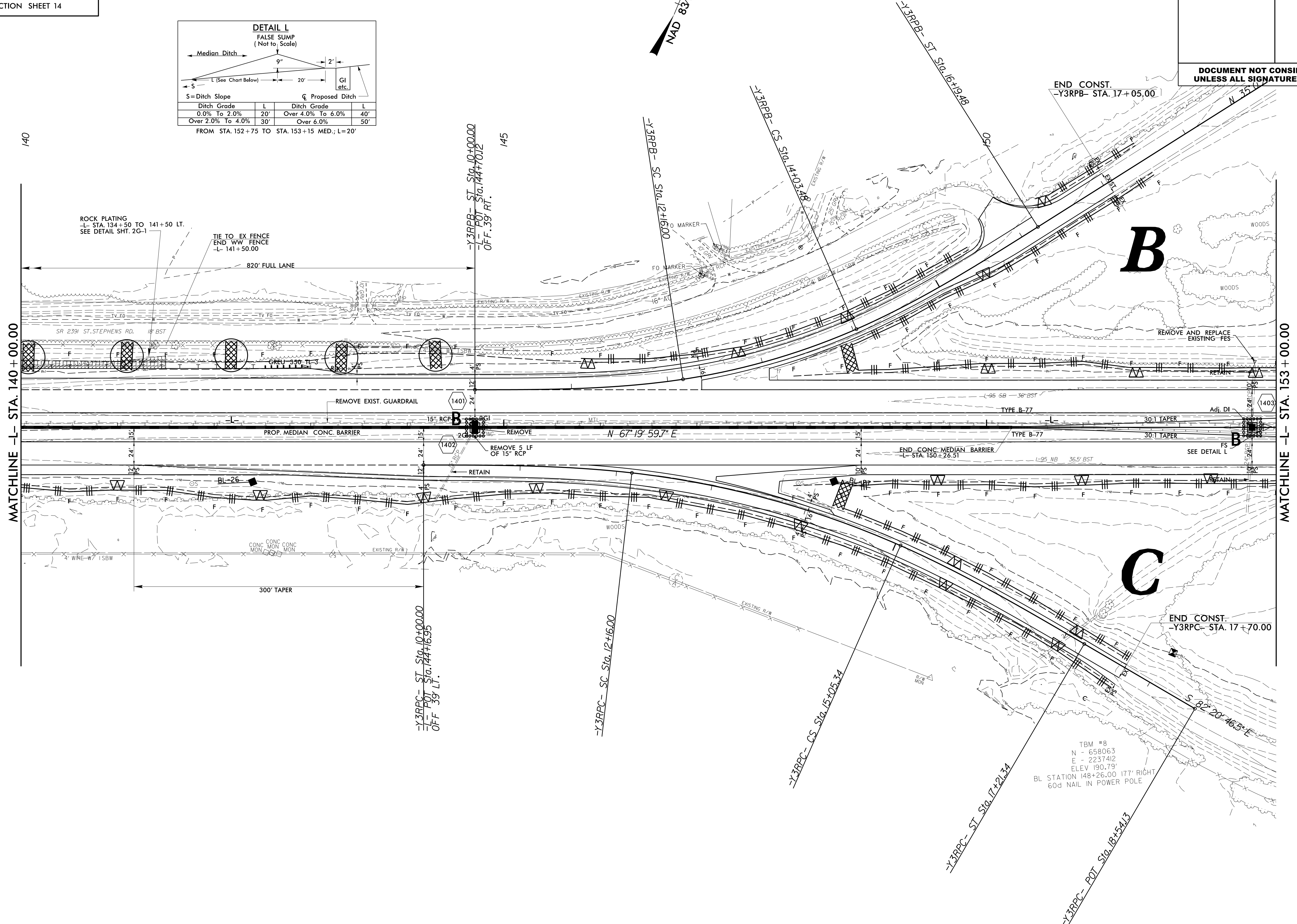
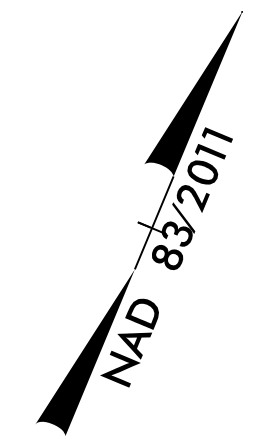
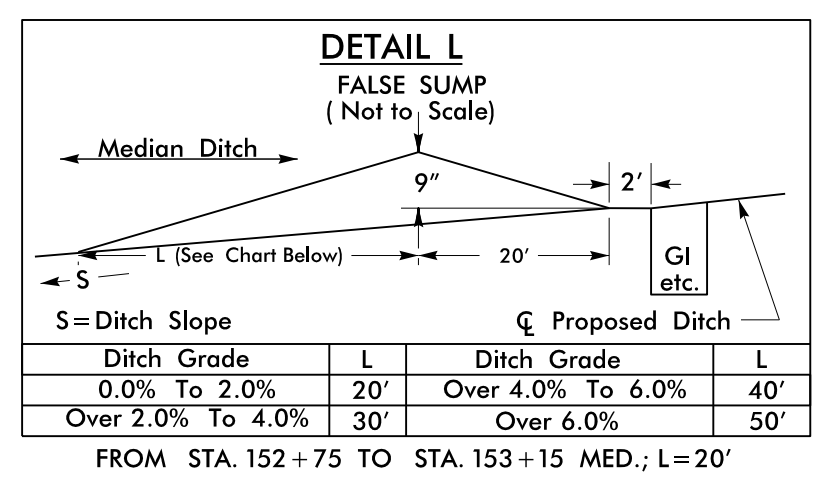
5/14/99

NOTE: PERIMETER EROSION CONTROL MEASURES SHALL BE INSTALLED DURING CLEARING AND GRUBBING PHASE.

CLEARING AND GRUBBING EROSION CONTROL FOR CONSTRUCTION SHEET 14

ETHERILL ENGINEERING
1223 Jones Franklin Rd.
Raleigh, N.C. 27606
License No. F-0377
Bus: 919 851 8077
Fax: 919 851 8107
TRANSPORTATION DESIGN/DESIGN - BRIDGE/STRUCTURE DESIGN
CIVIL/SITE DESIGN - GIS/GPS - CONSTRUCTION OBSERVATION

| | |
|--|---------------------|
| PROJECT REFERENCE NO. | SHEET NO. |
| 1-5786 | EC-14/CONST. 14 |
| RW SHEET NO. | |
| ROADWAY DESIGN ENGINEER | HYDRAULICS ENGINEER |
| DOCUMENT NOT CONSIDERED FINAL UNLESS ALL SIGNATURES COMPLETED | |



MATCHLINE -L- STA. 140+00.00

MATCHLINE -L- STA. 153+00.00

B

C

TBM #8
N - 658063
E - 2237412
ELEV 190.79'
BL STATION 148+26.00 177' RIGHT
60d NAIL IN POWER POLE

5/14/99
ETHERILL ENGINEERING
1223 JONES FRANKLIN RD.
RALEIGH, NC 27606
LICENSE NO. F-0377
BUS: 919 851 8077
FAX: 919 851 8107
TRANSPORTATION DESIGN/DESIGN - BRIDGE/STRUCTURE DESIGN
CIVIL/SITE DESIGN - GIS/GPS - CONSTRUCTION OBSERVATION