

MESSAGE NO. 1	MESSAGE NO. 2
EXIT 105 CLOSED	USE EXIT 106

CHANGEABLE MESSAGE SIGN  
 PLACE CMS 1 MILE IN ADVANCE OF CLOSED EXIT, OR AS DIRECTED BY THE ENGINEER.

**DETOUR SIGNING**

MESSAGE NO. 1	MESSAGE NO. 2
EXIT 105 CLOSED	USE NEXT EXIT

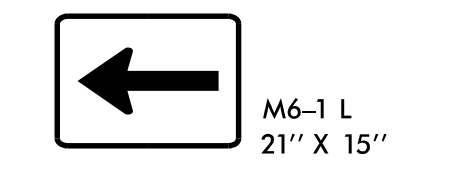
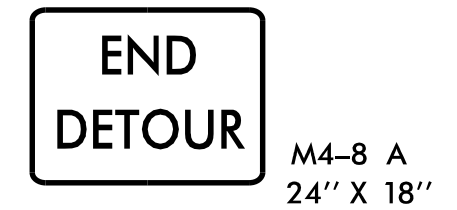
CHANGEABLE MESSAGE SIGN  
 PLACE CMS 1,000' IN ADVANCE OF OFF-RAMP TAPER, OR AS DIRECTED BY THE ENGINEER.

(A)

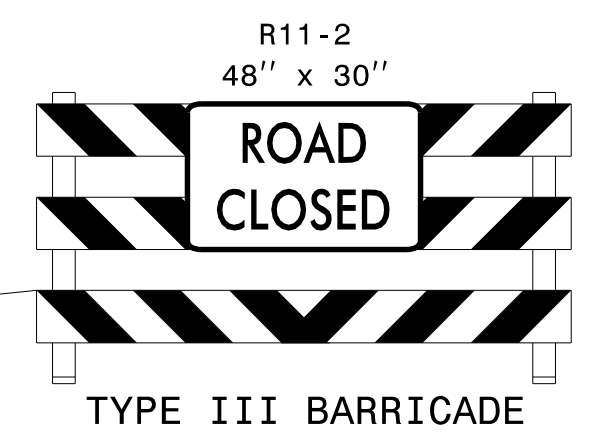
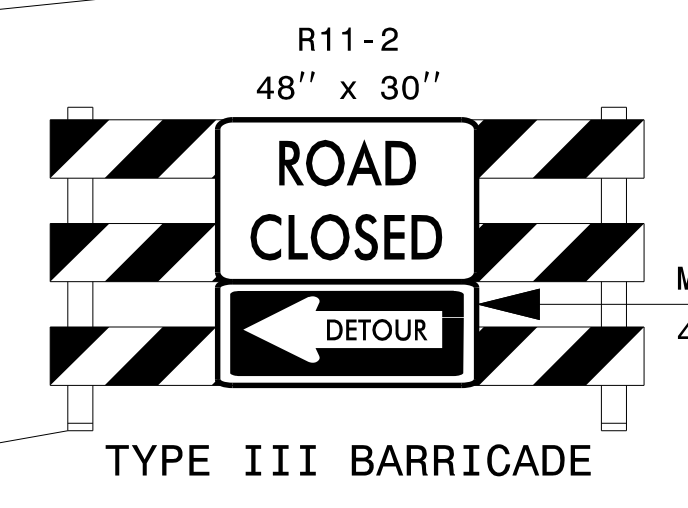
MESSAGE NO. 1	MESSAGE NO. 2
BAGLEY ROAD DETOUR	USE THIS EXIT

CHANGEABLE MESSAGE SIGN  
 PLACE CMS 1,000' IN ADVANCE OF OFF-RAMP TAPER, OR AS DIRECTED BY THE ENGINEER.

(B)



(C)



NOTES: SEE TMP-2B FOR "BAGLEY ROAD" SPECIAL SIGN DESIGN.  
 DRUM OFF DECELERATION LANE TO CLOSED RAMP.  
 ALL DETOUR SIGN LOCATIONS ARE APPROXIMATE.



DOCUMENT NOT CONSIDERED FINAL  
 UNLESS ALL SIGNATURES COMPLETED

**WETHERILL ENGINEERING**  
 TRANSPORTATION PLANNING/DESIGN - BRIDGE/STRUCTURE DESIGN  
 CIVIL/SITE DESIGN - GIS/GPS - CONSTRUCTION OBSERVATION

1223 Jones Franklin Rd.  
 Raleigh, N.C. 27606  
 License No. F-0377  
 Bus: 919 851 8077  
 Fax: 919 851 8107

APPROVED: \_\_\_\_\_ DATE: \_\_\_\_\_

6/5/2017

SEAL

PROFESSIONAL ENGINEER  
 SEAL 21116  
 BOB A. MAY

DIVISION OF HIGHWAYS  
 STATE OF NORTH CAROLINA  
 DEPARTMENT OF TRANSPORTATION  
 WORK ZONE TRAFFIC CONTROL

**DETOUR**  
**I-95 (-L-) NB**  
**EXIT 105 CLOSED TO**  
**BAGLEY ROAD**