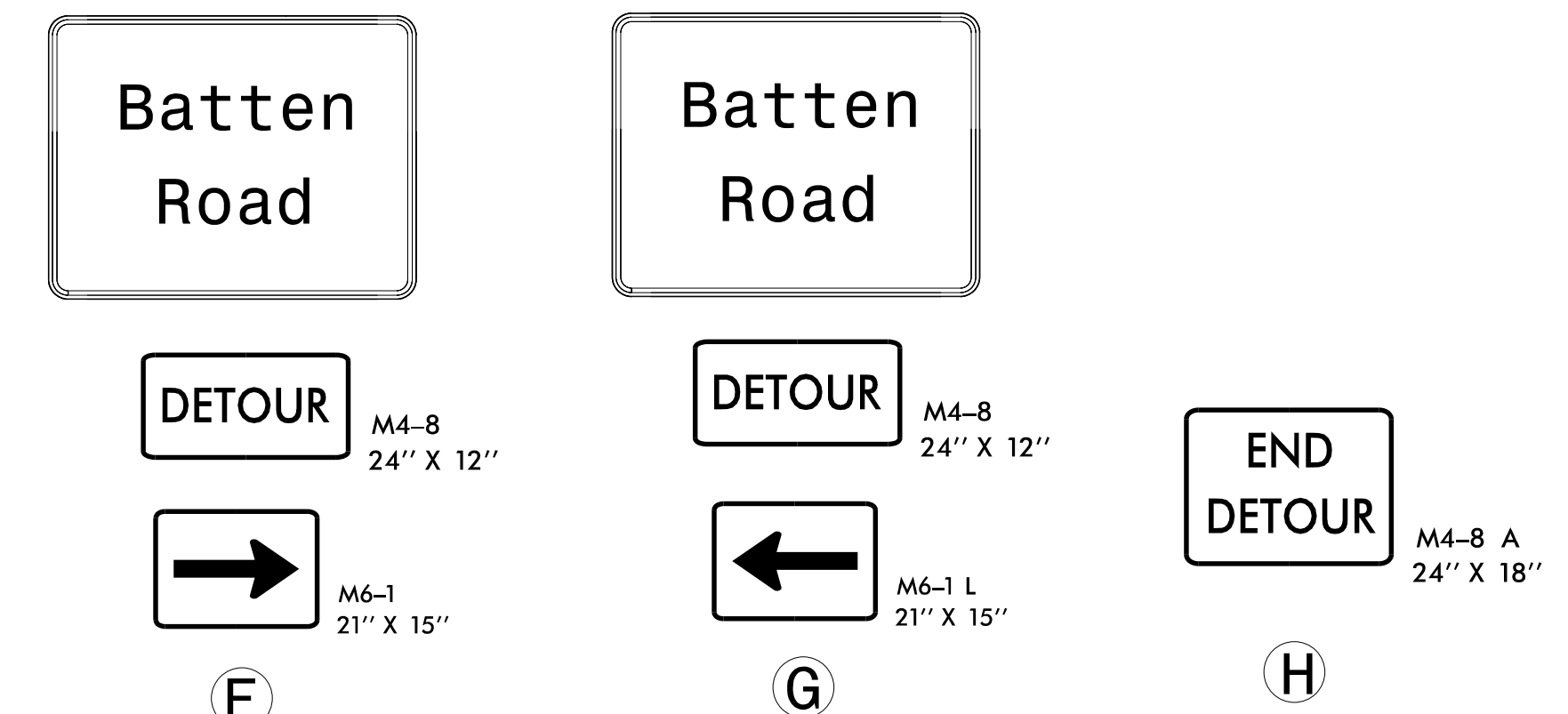
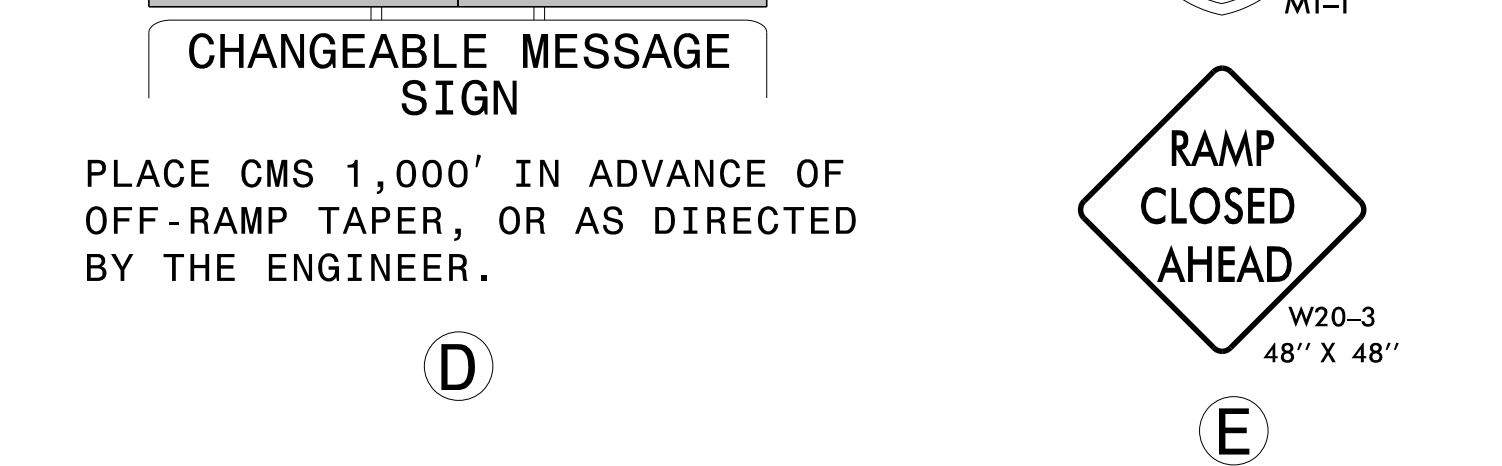
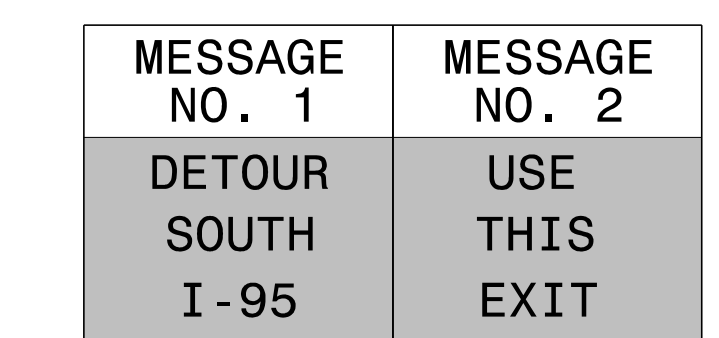
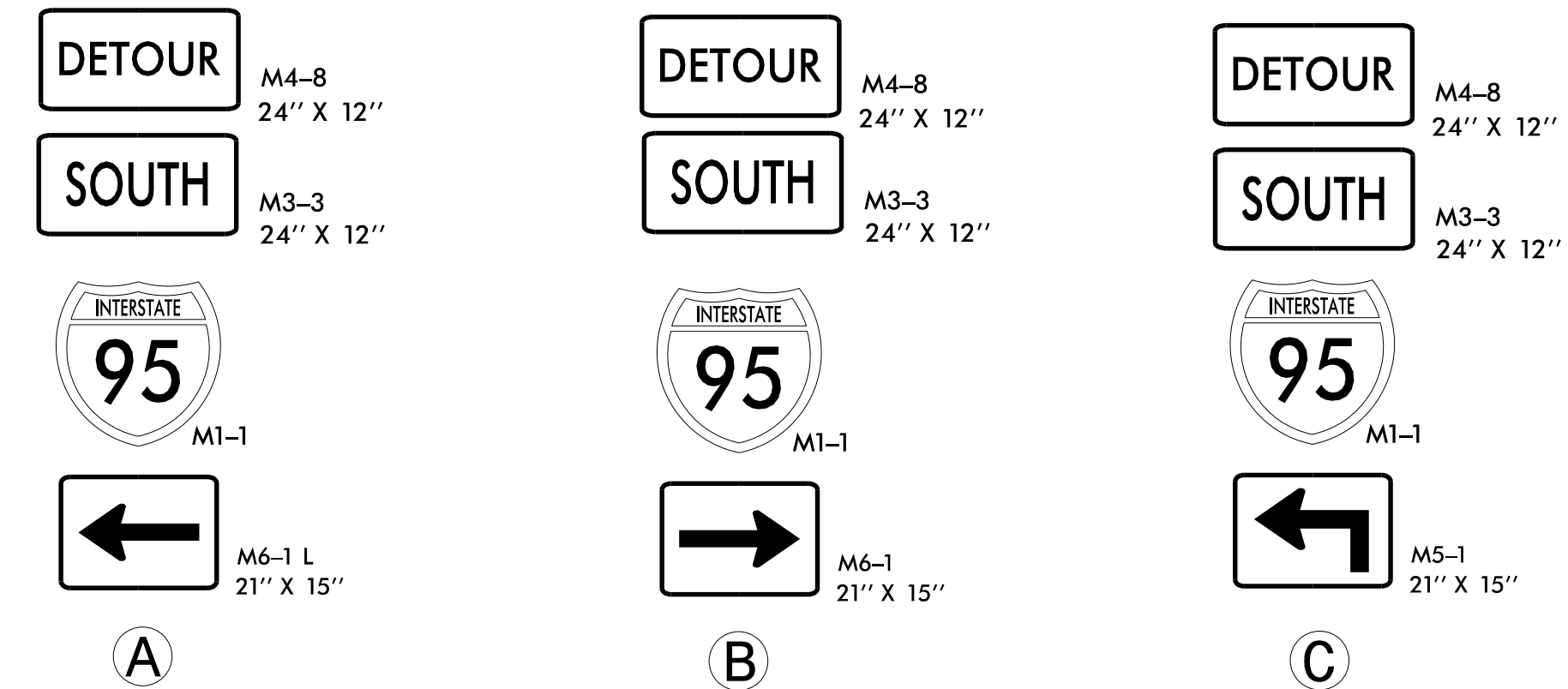
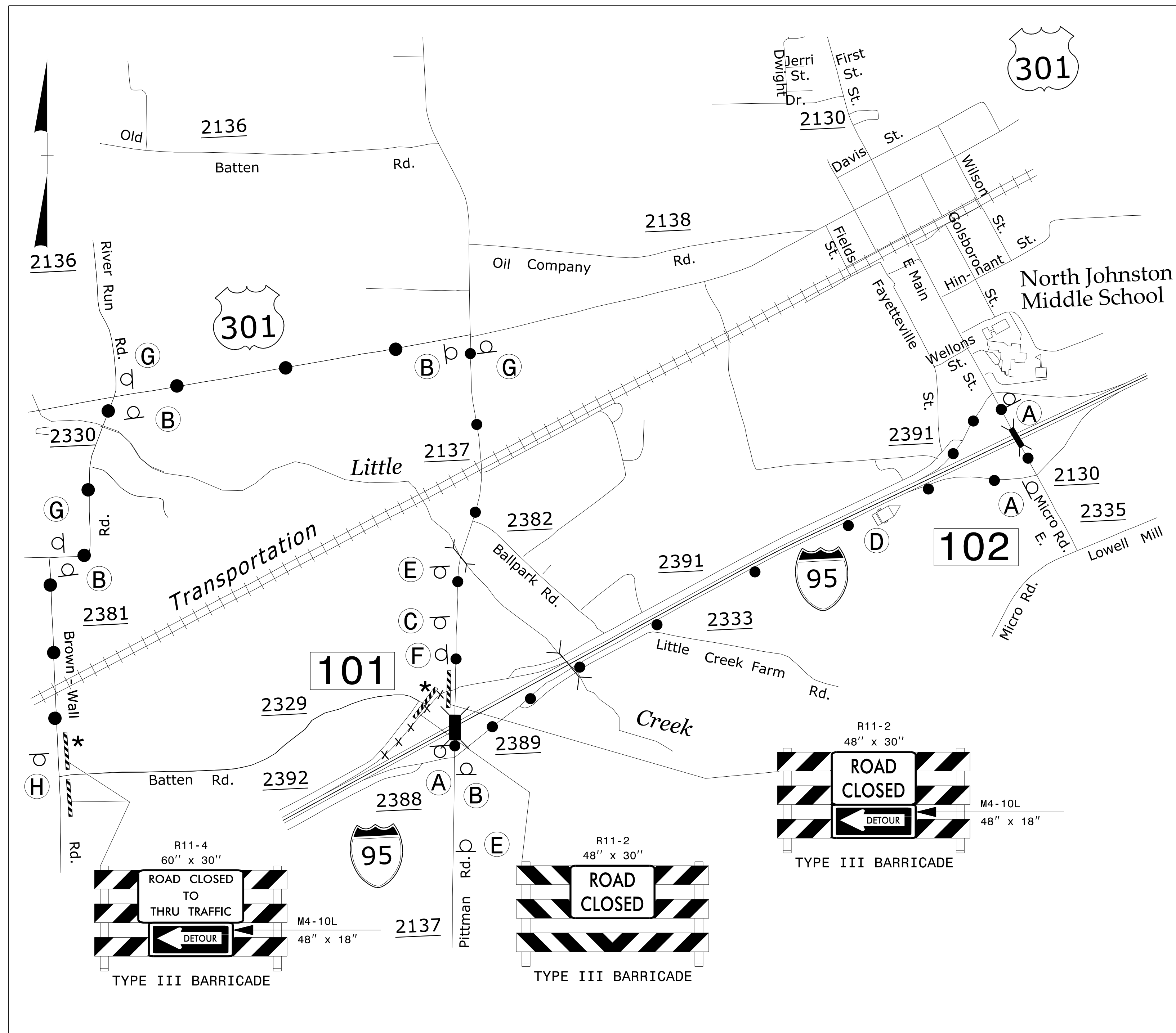


DETOUR SIGNING



NOTES: SEE TMP-2A FOR "BATTEN ROAD" SPECIAL SIGN DESIGN.
 ALL DETOUR SIGN LOCATIONS ARE APPROXIMATE.
 * SEE RSD 1101.03, SHEET 1 OF 9, FOR TYPE III BARRICADE LOCATION WITH ATTACHED SIGNING & ADDITIONAL SIGNING FOR ROAD CLOSURE.



| | | | | | |
|--|--|---|------------------------------|--|---|
| TRANSPORTATION PLANNING/DESIGN - BRIDGE/STRUCTURE DESIGN CIVIL/SITE DESIGN - GIS/GPS - CONSTRUCTION OBSERVATION | 1223 Jones Franklin Rd. Raleigh, N.C. 27606 License No. F-0377 Bus: 919 851 8077 Fax: 919 851 8107 | APPROVED: _____ DATE: _____ 6/5/2017 | SEAL 21116 BOB A. MAY | DIVISION OF HIGHWAYS STATE OF NORTH CAROLINA DEPARTMENT OF TRANSPORTATION WORK ZONE TRAFFIC CONTROL | DETOUR ON-RAMP CLOSED FROM PITTMAN ROAD TO I-95 (-L-) SB |
| | DOCUMENT NOT CONSIDERED FINAL UNLESS ALL SIGNATURES COMPLETED | | | | |