

5/14/19

6/5/20/1-5786_Pldj_psh33.dgn
11571111

-YI-

PI Sta 7+63.30	PI Sta 11+07.92
$\Delta = 0^\circ 27' 10.3" (LT)$	$\Delta = 0^\circ 17' 44.2" (LT)$
$D = 0' 11' 05.6"$	$D = 0' 03' 59.5"$
$L = 244.95'$	$L = 444.29'$
$T = 122.48'$	$T = 222.15'$
$R = 30,991.27'$	$R = 86,111.28'$

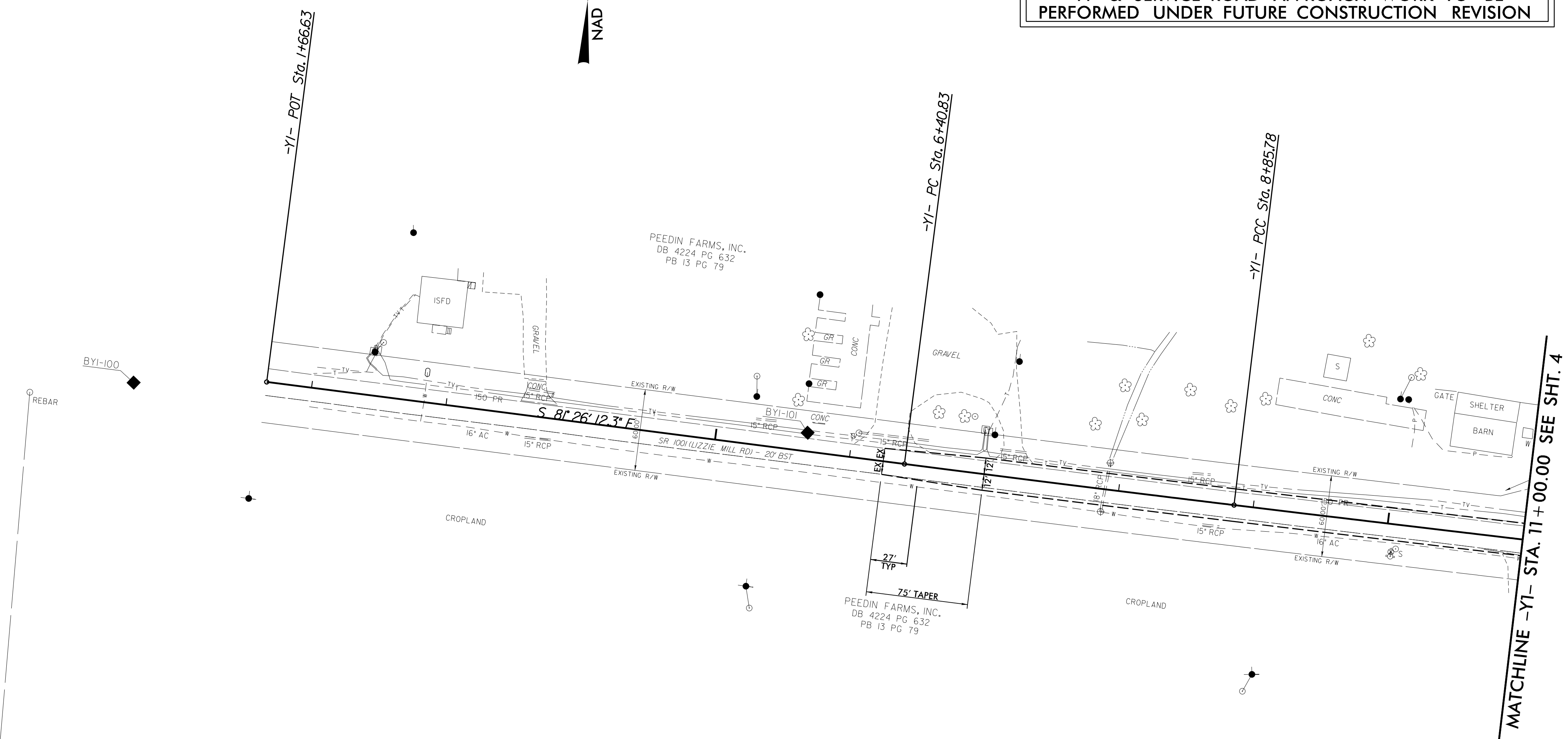
WETHERILL ENGINEERING
 1223 Jones Franklin Rd.
 Raleigh, N.C. 27606
 License No. F-0377
 Bus: 919 851 8077
 Fax: 919 851 8107

TRANSPORTATION PLANNING/DESIGN - BRIDGE/STRUCTURE DESIGN
 CIVIL/SITE DESIGN - GIS/GPS - CONSTRUCTION OBSERVATION

PROJECT REFERENCE NO. 1-5786	SHEET NO. 33
RW SHEET NO.	
ROADWAY DESIGN ENGINEER 6/6/2017 NORTH CAROLINA PROFESSIONAL SEAL 21116 BOB A. MAY	HYDRAULICS ENGINEER 6/6/2017 NORTH CAROLINA PROFESSIONAL SEAL 31977 STEIN B. ALFORD
DOCUMENT NOT CONSIDERED FINAL UNLESS ALL SIGNATURES COMPLETED	

SHEET FOR INFORMATION ONLY
-YI- & SERVICE ROAD APPROACH WORK TO BE PERFORMED UNDER FUTURE CONSTRUCTION REVISION

NAD 83/2011



-SRI-

PI Sta 11+32.68
$\Delta = 43^\circ 46' 22.2" (RT)$
$D = 44' 04' 25.2"$
$L = 99.32'$
$T = 52.22'$
$R = 130.00'$

