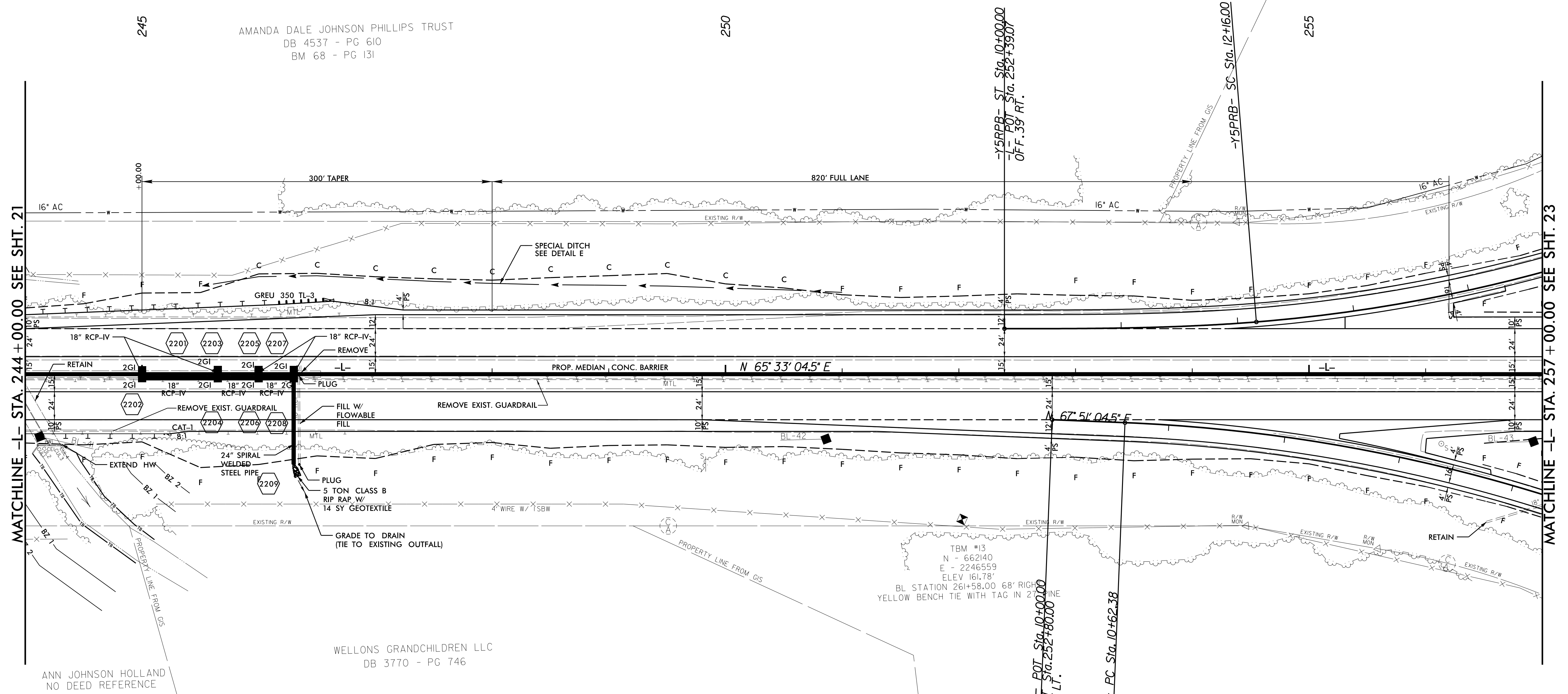
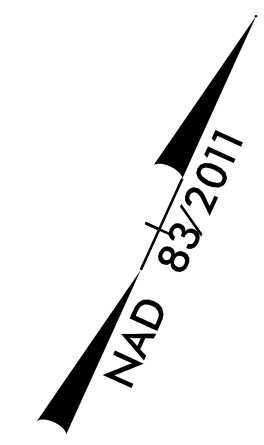
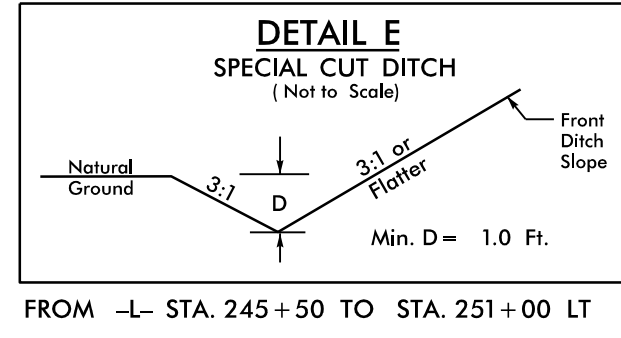


5/14/19

**WETHERILL ENGINEERING**  
1223 Jones Franklin Rd.  
Raleigh, N.C. 27606  
License No. F-0377  
Bus: 919 851 8077  
Fax: 919 851 8107

PROJECT REFERENCE NO. <b>1-5786</b>		SHEET NO. <b>22</b>	
RW SHEET NO.			
ROADWAY DESIGN ENGINEER 6/6/2017 SEAL 21116 ENGINEER BOB A MAY		HYDRAULICS ENGINEER 6/6/2017 SEAL 31977 ENGINEER KEVIN B ALFORD	
DOCUMENT NOT CONSIDERED FINAL UNLESS ALL SIGNATURES COMPLETED			

**-Y5RPB-**  
 Pls Sta 11+44.05 PI Sta 14+20.40 Pls Sta 16+93.76  
 $\Theta_s = 4' 35'' 24.0''$   $\Delta = 17' 14'' 34.0''$  (LT)  $\Theta_s = 4' 35'' 24.0''$   
 $L_s = 216.00'$   $D = 4' 15'' 00.0''$   $L_s = 216.00'$   
 $LT = 144.05'$   $L = 405.71'$   $LT = 144.05'$   
 $ST = 72.04'$   $T = 204.40'$   $ST = 72.04'$   
 $R = 1,348.14'$



MATCHLINE -L- STA. 244+00.00 SEE SHT. 21

MATCHLINE -L- STA. 257+00.00 SEE SHT. 23

ANN JOHNSON HOLLAND  
NO DEED REFERENCE

AMANDA DALE JOHNSON PHILLIPS TRUST  
DB 4537 - PG 610  
BM 68 - PG 131

WELLONS GRANDCHILDREN LLC  
DB 3770 - PG 746

TBM #13  
 N - 662140  
 E - 2246559  
 ELEV 161.78'  
 BL STATION 261+58.00 68' RIGHT  
 YELLOW BENCH TIE WITH TAG IN 2' LINE

**-Y5RPC-**  
 POT Sta. 10+00.00  
 POT Sta. 252+80.00  
 OFF. 39' LT.

**-Y5RPC-**  
 PI Sta 14+32.61  
 $\Delta = 29' 37'' 31.6''$  (RT)  
 $D = 4' 05'' 33.2''$   
 $L = 723.89'$   
 $T = 370.23'$   
 $R = 1,400.00'$

6/5/2017 1-5786\_Rcdy\_psh22.dgn